



Finishes

In the increasingly polluted atmosphere in which we live, the demands on products to resist corrosion are particularly high. ASSA products have the benefit of the latest automatic plating equipment which incorporates the best of modern plating processes.

Satin chrome and stainless steel give extremely good weather resistance, whilst polished brass is offered as a decorative finish. In addition, our products are suitable for powder coating or plating for occasions when it is important to match the finish of other ironmongery on a project.

- ✓ Standard finish
- Special finish

Item	Polished chrome Fin 11	Satin chrome Fin 13	Polished brass Fin 20	Satin stainless Fin 31/34	Satin aluminium Fin 81	Anti-microbial coating
<b>Light Reflectance Value (LRV)</b>	7	40	15	58	78	
Brighthandle range				✓		
Ruko-Line and :DO:RE:MI: ranges				✓		
ScanFlex range				✓		
ASSA Distinction range	✓	✓	✓			
ASSA Classic range		✓	✓			
ASSA Aluminium range					✓	✓
Connect/Modular accessories	●	✓	✓	✓		
Compact accessories	✓	✓	✓			
Narrow profile accessories	✓					
Connect 35mm accessories		✓				

LRV was measured using lever handles of the appropriate finish.

Anti-microbial coatings

Restricting the spread of bacteria and other dangerous organisms is a matter of vital concern in this era of antibiotic resistant 'superbugs' such as MRSA. We have therefore developed a range of anti-microbial finishes for several of our products. These will be particularly useful in applications vulnerable to contamination such as hospitals, schools, leisure facilities, and any buildings with toilets or food preparation areas, especially those used by people with reduced resistance to infection such as the sick, children or the elderly.

How it works

The anti-bacterial effect is produced by a surface treatment applied to the product which contains small quantities of silver. Silver ions are released onto the surface of the product in a steady and controlled manner over the lifetime of the finish.

The silver ions then counteract bacteria in three ways: by preventing transport functions through their cell membranes, inhibiting cell division, and disrupting the cell metabolism.

Key features

- Safe for use in medical and food preparation areas.
- In independent testing, the process destroyed 99.99% of bacteria and moulds exposed to it over a 24-hour period.
- Tested to work against dangerous organisms such as E. coli, Staphylococcus, Listeria, Legionella and Salmonella.
- The coating is an integral part of the product which does not wear off in normal use, and continues to be effective throughout its lifetime.
- Products should still be cleaned in the normal way as part of a regular hygiene routine. Please note that extensive scratching or abrasion can limit the effectiveness of the anti-microbial coating.
- The TAM coating is currently offered on the Aluminium 1325 lever handle, and the Addition finish – which is of architectural quality and resembles satin stainless steel – on the Distinction 6655 and 6655C lever handles.

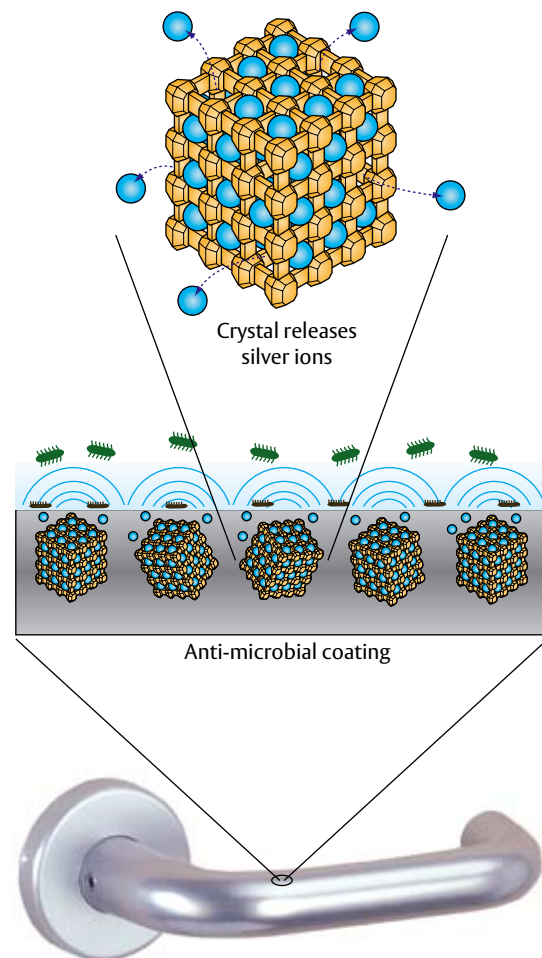


Diagram illustrates TAM coating on aluminium handles.

Dimensions

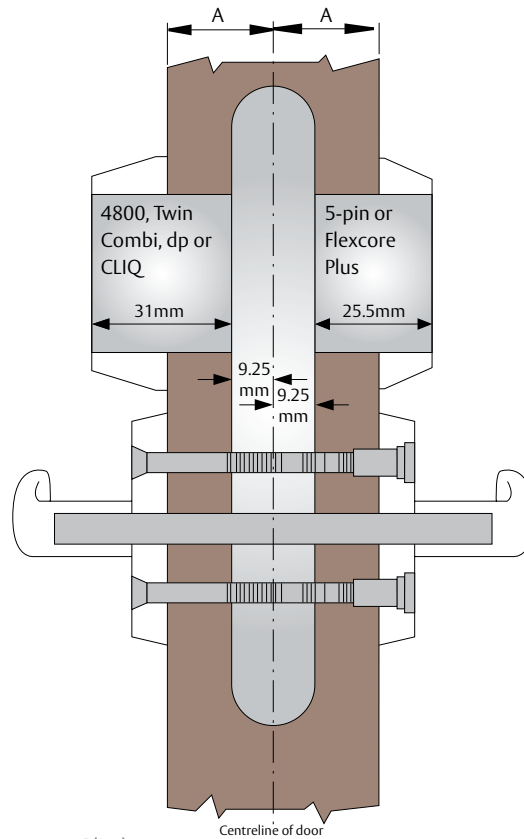
ASSA Door Furniture sets are supplied as standard for 44/45mm thick doors. However, we also offer a complete range of alternative components. Using these, the products may be adapted to suit doors of different thicknesses.

**Cylinder Ring Size**  
(Modular and Small Case Locks):

Face of the cylinder will be 40.25mm from the centreline of the door (34.75mm for 5-pin Cylinders).

Subtract half the door thickness (A) from this measurement to identify the correct cylinder ring size.

Scandinavian Oval cylinders must not project more than 2mm from the face of the cylinder ring, for security reasons. This is less crucial for Scandinavian Round cylinders because of their cover sleeve.



**EXAMPLE:** Fitting a 4800, ASSA Twin Combi or dp Scandinavian Oval cylinder to 44mm thick doors (A = 22mm), use 18mm cylinder ring. (40.25mm – 22mm = 18mm).

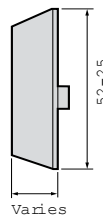
**Handle Fixings Size**  
(Using ASSA Lever Handles):

Spindle length should be the door thickness plus not less than 50mm.

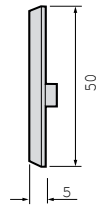
Split Spindles should be half the door thickness plus not less than 10mm.

Screws should be the door thickness plus approximately 10mm.

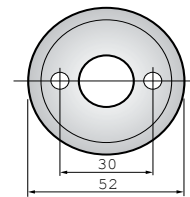
Cylinder ring



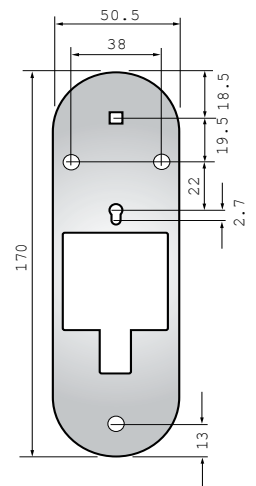
Blind rose  
Thumbturn rose



**CENTRES**  
(Handle rose and emergency accessory)



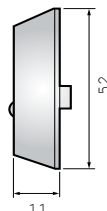
Long backplate



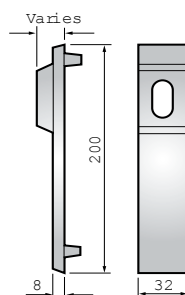
11mm  
blind rose



265 toilet  
escutcheon



Narrow profile  
accessory



Emergency  
accessory

