

healthcare

HTM64 and
general healthcare



*Armitage
Shanks
Ideal
Standard*

healthcare

HTM64

healthcare

HTM64

healthcare

HTM64



healthcare

HTM64

healthcare

htm64 index

This section provides detailed information on the range of hospital sanitaryware and fittings manufactured by Armitage Shanks.

The products shown are grouped according to function to simplify choice and specification.

This section details products which comply with specifications in the DoH Health Technical Memoranda 64 Sanitary Assemblies.

- Disposal units
- Urinals
- WCs
- Washbasins
- Baths

healthcare

HTM64 index

CDB code	Application	Armitage Shanks product	Page
DU-HS	Hospital pattern disposal unit with sink	Dee BI	19:1:5
DU-HS	Hospital pattern disposal unit with sink	Dee TI	19:1:6
DU H	Hospital pattern disposal unit	Stirling BI	19:1:7
DU-H	Hospital pattern disposal unit	Stirling TI	19:1:8
DU-PH	Hospital pattern disposal unit, plaster/domestic services bucket sink	Forth	19:1:9
DU-G	Domestic services disposal unit	Leven BI	19:1:10
DU-G	Domestic services disposal unit	Leven TI	19:1:11
UR-H	Hospital pattern urinal	Contour	19:1:12
UR-G	General urinal	Sanura	19:1:13
WC-H/A	Hospital pattern WC – adult	Contour	19:1:14
WC-H/C	Hospital pattern WC – child	Junior Profile	19:1:15
WC-HC/A	Hospital pattern corbelled WC – adult	Braemar	19:1:16
WC-G/L	General WC – low level washdown	Magna	19:1:17
WC-G/C	General WC – close coupled washdown	Wentworth 2	19:1:18
LB-H	Hospital pattern washbasin	Contour	19:1:19
LB-H	Hospital pattern washbasin	Contour	19:1:20
LB-G	General washbasin	Portman	19:1:21
LB-G	General washbasin	Portman	19:1:22
LB-G	General washbasin	Portman	19:1:23
LB-GS	General washbasin – semi-recessed	Profile	19:1:24
LB-GS	General washbasin – semi-recessed	Tiffany	19:1:25
LB-GI	General washbasin – inset	Planet	19:1:26
LB-GI	General washbasin – inset	Orbit	19:1:27
LB-GI	General washbasin – inset	Valencia	19:1:28
BA-H/M	Hospital pattern bath – metal	Nisa	19:1:29
BA-H/P	Hospital pattern bath (assisted) – plastic	Lichfield	19:1:30
BA-H/P	Hospital pattern bath (assisted) – plastic	Shetland (assembly)	19:1:31
BA-G	General bath	Sandringham	19:1:32

healthcare htm64 index

This section provides detailed information on the range of hospital sanitaryware and fittings manufactured by Armitage Shanks.

The products shown are grouped according to functions to simplify choice and specification.

This section details products which comply with specifications in the DoH Health Technical Memoranda 64 Sanitary Assemblies.

- Bidets
- Sinks
- Taps
- Mixers

CDB code	Application	Armitage Shanks product	Page
BD-G	General bidet	Profile	19:1:33
BD-H	Hospital pattern bidet	Profile	16:2:11
PS-H	Hospital pattern plaster sink	Clyde	19:1:34
SU-H	Hospital pattern scrub up trough	Firth	19:1:35
SH-G/P	Shower receiver 80cm – (plastic)	Lincoln	19:1:36
SH G/C	Shower receiver 82cm – (ceramic)	Modula	19:1:37
SK-1	Sink – single bowl – stainless steel	Doon	19:1:38
SK-2	Sink – double bowl – stainless steel	Doon	19:1:39
ST-A	Sinktop – single bowl, single drainer	Doon	19:1:40
ST-B	Sinktop – single bowl, double drainer	Doon	19:1:41
ST-C	Sinktop – double bowl, single drainer	Doon	19:1:42
TP1	1/2in pillar tap	Nimbus Nuastyle	19:1:43 19:1:43
TP2	3/4in pillar tap	Nimbus Nuastyle	19:1:43 19:1:43
TP3	1/2in high neck pillar tap	Nimbus Nuastyle	19:1:43 19:1:43
TP5	1/2in short lever action pillar tap	Millenia	19:1:44
TP6	Pillar mixer with spray outlet Option with lever action	Spraymixa Spraymixa	19:1:44 19:1:44
TP7	1/2in pillar mixer	Nimbus	19:1:45
TP8	Pillar manual mixer compound lever action with spray	Piccolo 2	19:1:45
TP9	Pillar mixer high neck with lever action	Piccolo 2	19:1:46
TB1	1/2in bib tap with hose union – B51010 (Not offered)	see TB2	
TB2	1/2in bib tap with hose union – B55412	Nimbus	19:1:46
TB3	1/2in bib tap	Nimbus	19:1:46
TB4	1/2in wall mounted mixer, twin flow	Nimbus	19:1:47
TB5	1/2in wall mounted mixer	Millenia	19:1:47
TB6	3/4in wall mounted mixer	Millenia	19:1:48
TB7	Wall mounted mixer, single control, spray outlet	Starlite	19:1:48

healthcare

htm64 index

This section provides detailed information on the range of hospital sanitaryware and fittings manufactured by Armitage Shanks.

The products shown are grouped according to functions to simplify choice and specification.

This section details products which comply with specifications in the DoH Health Technical Memoranda 64 Sanitary Assemblies.

- Hospital pattern taps
- Shower kits
- Wastes
- Traps

healthcare

HTM64 index

CDB code	Application	Armitage Shanks product	Page
TBH1	Hospital pattern 1/2in lever action bib tap	Markwik	19:1:49
	Option with spray outlet	Markwik	19:1:49
TBH2	Hospital pattern 1/2in lever action wall mounted mixer,	Markwik	19:1:49
	Option with anti splash outlet, swivel nozzle, twin flow	Markwik	19:1:49
TBH3	Hospital pattern 1/2in lever action wall mounted mixer, anti splash outlet	Markwik	19:1:50
	Option with spray outlet	Markwik	19:1:50
TBH4	Hospital pattern wall mounted thermostatic mixer tap with lever action	Use TBH1 with separate thermostatic valve	
TBH5	Wall mounted manual mixer taps with lever action	Use TBH1 with separate manual mixing valve	
TBH6	Hospital pattern bib tap with automatic operation	Sensorflow	19:1:51
MM1	Manual shower mixer, flexible hose and handset	Supamix	19:1:51
	Option with sliding rail substitute, Armaglide handset & 125cm flexible tube	Supamix	19:1:51
MM2	Manual shower mixer with angled shower arm and Triton shower head	Supamix	19:1:51
TM1	Thermostatic shower mixer, flexible hose and handset	Startlite	19:1:51
	Option with sliding rail substitute, Armaglide handset & 125cm flexible tube	Startlite	19:1:51
WT1	1 1/4in chrome plated strainer waste		19:1:52
WT2	1 1/2in chrome plated strainer waste		19:1:52
WT3	1 1/4in chrome plated waste with plug & chain, unslotted with screw stay		19:1:52
WT4	1 1/2in chrome plated waste with plug & chain, unslotted with screw stay		19:1:52
	Option slotted		19:1:52
TR1/M	1 1/4in chrome plated metal bottle trap 75mm seal		19:1:52
TR2/M	1 1/2in chrome plated metal bottle trap 75mm seal		19:1:52
TR1/P	1 1/4in white plastic bottle trap with 75mm seal		19:1:53
TR2/P	1 1/2in white plastic bottle trap with 75mm seal		19:1:53
TRR1/M	1 1/4in chrome plated metal resealing bottle trap with 75mm seal	Not offered	
TRR2/M	1 1/2in chrome plated metal resealing bottle trap with 75mm seal	Not offered	
TRR1/P	1 1/4in white plastic resealing bottle trap with 75mm seal		19:1:53
TRR2/P	1 1/2in white plastic resealing bottle trap with 75mm seal		19:1:53
	Maintenance & Cleaning - including Quality Controls and Effects of Hard Water		19:1:54

healthcare

HTM64 index

healthcare

htm64 dee bi slop hopper

DU-HS combined slop hopper, sink and work surface. Available with hopper at left or right hand side.

- Disposal unit assembly
- Handed left or right
- Screw to wall
- Stainless steel

healthcare

HTM64



Illustrated

S6500 (532304Y) (DU-HS) Dee right hand slop hopper with sink in stainless steel, back inlet
S3590 (165805P) P trap outlet
S3730 (42240JE) Conceala high level duct cistern and cover, 6 litre capacity with Freeflo plastic syphon fittings, 1/2in Microvalve HP/LP side supply ballvalve, internal overflow, lever extended through wall with chain
S4590 (M128600) 9 litre conversion set
S4663 (735289Z) plastic flushpipe
S8270 (806041D) (TBH1) Markwik 1/2in lever action bib taps
S8346 (8174BPR) 75mm extensions
S8336 (81470PR) 1/2in wall mounts for concealed plumbing
S8760 (70658N0) 1 1/2in unslotted strainer waste
S8925 (7360800) (TRR2/P) 1 1/2in bottle trap

Material

18 gauge stainless steel sheet

Weight

Dee sink 40.0kg
 Trap 3.0kg

Finish

Polished stainless steel

Standards

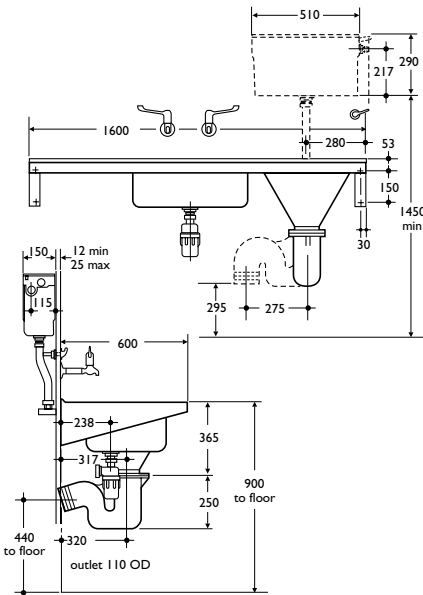
Stainless steel sheet conforms to BS 1449: Part 2: 1983

Options

S6501 (532304Z) (DU-HS) left hand slop hopper with sink and work surface
S3591 (165805S) S trap outlet
S8230 (801147V) (TBH3) Markwik 1/2in wall mounted mixer with horizontal nozzle, anti splash outlet and concealed inlets
S9272 (S09TQ05) stainless steel legs to floor (2 required)

Special notes

Note HTM64 does not cover for the provision of leg supports to floor



healthcare

htm64 dee ti slop hopper

DU-HS combined slop hopper, sink and work surface. Available with hopper at left or right hand side.

healthcare

HTM64

- Disposal unit assembly
- Handed left or right
- Lever taps



Illustrated

S6504 (532204Y) (DU-HS) Dee right hand slop hopper with sink, top inlet

S3590 (165805P) P trap outlet

S3955 (17180AD) Clena high level cistern & cover 6 litre capacity with Freeflo plastic syphon fittings, 1/2in Microvalve HP/LP side supply ballvalve, internal overflow, chain and pull

S4590 (M128600) 9 litre conversion set

S4662 (78538A1) one piece plastic flushpipe

S8270 (806041D) (TBH1) Markwik 1/2in lever action bib taps

S8346 (8174BPR) 75mm extensions

S8336 (81470PR) 1/2in wall mounts for concealed plumbing

S8760 (70658NO) 1 1/2in unslotted strainer waste

S8925 (7360800) (TRR2/P) 1 1/2in bottle trap

Material

18 gauge stainless steel sheet

Weight

Dee sink 40.0kg
Trap 3.0kg

Finish

Polished stainless steel

Standards

Stainless steel sheet conforms to BS 1449: Part 2 : 1983

Options

S6505 (532204Z) (DU-HS) left hand slop hopper with sink and work surface

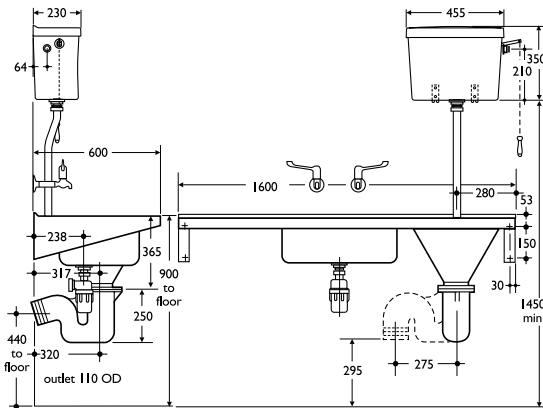
S3591 (165805S) S trap outlet

S8230 (801147V) (TBH3) Markwik 1/2in wall mounted mixer with horizontal nozzle, anti splash outlet and concealed inlets

S9272 (S09T905) stainless steel legs to floor (2 required)

Special notes

Note HTM64 does not cover for the provision of leg supports to floor



healthcare

htm64 stirling bi slop hopper

DU-H combined slop hopper and work surface. Available with hopper at left or right hand side.

- Disposal unit assembly
- Stainless steel
- Left or right handed
- Screw to wall

healthcare

HTM64



Illustrated

S6510 (531904Y) (DU-H) Stirling right hand slop hopper with work surface in stainless steel, back inlet
S3590 (165805P) P trap outlet
S3730 (42240JE) Conceala high level duct cistern & cover, 6 litre capacity with Freeflo plastic syphon fittings, 1/2in Microvalve HP/LP side supply ballvalve, internal overflow, lever extended through wall with chain
S4590 (M128600) 9 litre conversion set
S4663 (735289Z) plastic flushpipe
S8270 (806041D) (TBH1) Markwik lever action bib taps
S8346 (81746PR) 75mm extensions
S8336 (81470PR) 1/2in wall mounts for concealed plumbing

Material

18 gauge stainless steel sheet

Weight

Stirling sink 25.0kg
 Trap 3.0kg

Finish

Polished stainless steel

Standards

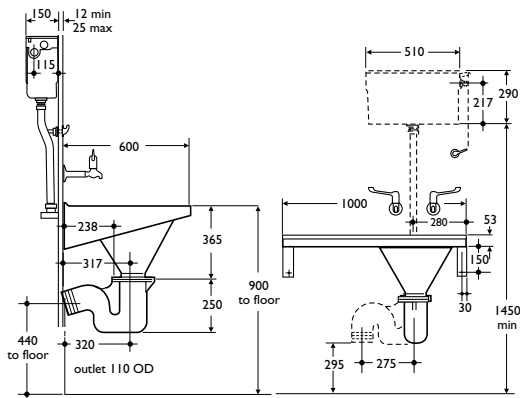
Stainless steel sheet conforms to BS 1449: Part 2 : 1983

Options

S6511 (531904Z) (DU-H) left hand slop hopper with work surface
S3591 (165805S) S trap outlet
S8230 (801147V) (TBH3) Markwik 1/2in wall mounted mixer with horizontal nozzle, anti splash outlet and concealed inlets
S9272 (S09TQ05) stainless steel legs to floor (2 required)

Special notes

Note HTM64 does not cover for the provision of leg supports to floor



healthcare

htm64 stirling ti slop hopper

DU-H combined slop hopper and work surface. Available with hopper at left or right hand side.

healthcare

HTM64

- Disposal unit assembly
- Stainless steel
- Left or right handed
- Screw to wall



Illustrated

S6514 (531804Y)
(DU-H) Stirling right hand slop hopper with work surface, top inlet
S3590 (165805P)
P trap outlet
S3955 (17180AD)
Clena high level cistern & cover 6 litre capacity with Freeflo plastic syphon fittings, 1/2in Microvalve HP/LP side supply ballvalve, internal overflow, chain and pull
S4590 (M128600) 9 litre conversion set
S4662 (78538A1) one piece plastic flushpipe
S8270 (806041D) (TBH1) Markwik 1/2in lever action bib taps
S8346 (8174BPR) 75mm extensions
S8336 (81470PR) 1/2in wall mounts for concealed plumbing

Material

18 gauge stainless steel sheet

Weight

Stirling sink 25.0kg
Trap 3.0kg

Finish

Polished stainless steel

Standards

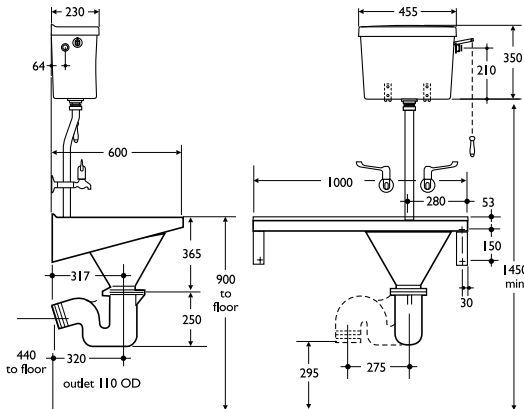
Stainless steel sheet conforms to BS 1449: Part 2: 1983

Options

S6515 (531804Z) (DU-H) left hand slop hopper with work surface
S3591 (165805S) S trap outlet
S9272 (S09TQ05) stainless steel legs to floor

Special notes

Note HTM64 does not cover for the provision of leg supports to floor



healthcare

htm64 forth plaster sink

DU-PH dual purpose sink unit with bucket grating. Forth incorporates a sump to accommodate strainer and prevent plaster from blocking the drain.

- Hospital plaster sink
- Bucket grating
- Stainless steel
- Dual purpose sink
- Screw to wall

healthcare

HTM64



Illustrated

S6520 (5335100) (DU-PH) Forth plaster sink in stainless steel with integral brackets, no tapholes, with bucket grating, strainer basket, lid, 1/2in vulcanite standing tube, and combined waste, overflow and connecting pipe S8210 (800247V) (TBH2) Markwik 1/2in wall mounted mixer with swivel nozzle, anti splash outlet, concealed inlets and compression nuts

Material

18 gauge stainless steel sheet

Weight

Sink 21.0kg

Finish

Polished stainless steel

Standards

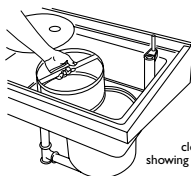
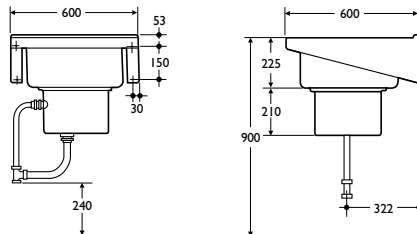
Stainless steel sheet conforms to BS 1449: Part 2: 1983

Options

S9272 (S09TQ05) stainless steel legs to floor (2 required)

Special notes

Note HTM64 does not cover for provision of leg supports to floor



close up view showing sump strainer, etc.



healthcare

htm64 leven bi slop hopper

DU-G stainless steel hopper with bucket grating and removable sump grid.

healthcare

HTM64

- Domestic services disposal unit
- Screw to wall
- Stainless steel
- Bucket grating



Illustrated

S6525 (53250GR)
(DU-G) Leven slop hopper in stainless steel with hinged bucket grating, back inlet
S3590 (16580SP)
P trap outlet
S3730 (42240JE)
Conceala high level duct cistern & cover, 6 litre capacity with Freeflo plastic syphon fittings, 1/2in Microvalve HP/LP side supply ballvalve, internal overflow, lever extended through wall with chain
S4590 (M128600) 9 litre conversion set
S4663 (735289Z) plastic flushpipe
S7205 (6610400)
(TB3) Nimbus 1/2in inclined bib taps
S8346 (8174BPR)
75mm extensions
S8336 (81470PR)
1/2in wall mounts for concealed plumbing

Material

18 gauge stainless steel sheet

Weight

Sink 21.0kg
Trap 3.0kg

Finish

Polished stainless steel

Standards

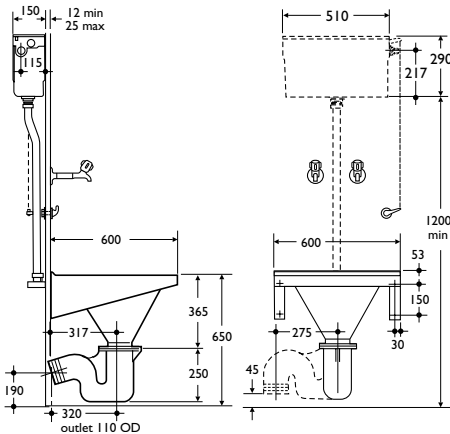
Stainless steel conforms to BS 1449: Part 2: 1983

Options

S3591 (16580SS)
S trap outlet
S9272 (S09TQ05)
stainless steel leg to floor (2 required)

Special notes

Note HTM64 does not cover for the provision of leg supports to floor



healthcare

htm64 leven ti slop hopper

DU-G stainless steel hopper with bucket grating and removable sump grid.

- Domestic services disposal unit
- Stainless steel
- Bucket grating
- Removable sump grid

healthcare

HTM64



Illustrated

S6526 (53240GR) (DU-G) Leven slop hopper in stainless steel with hinged bucket grating
S3590 (16580SP) P trap outlet
S3955 (17180AD) Clena high level cistern & cover, 6 litre capacity with Freeflo plastic syphon fittings, 1/2in Microvalve HP/LP side supply ballvalve, internal overflow, chain and pull
S4590 (M128600) 9 litre conversion set
S4662 (78538A1) one piece plastic flushpipe
S7205 (6610400) (TB3) Nimbus 1/2in inclined bib taps
S8336 (81470PR) 1/2in wall mounts for concealed plumbing
S8346 (81746PR) 75mm extensions

Material

18 gauge stainless steel sheet

Weight

Sink 21.0kg
 Trap 3.0kg

Finish

Polished stainless steel

Standards

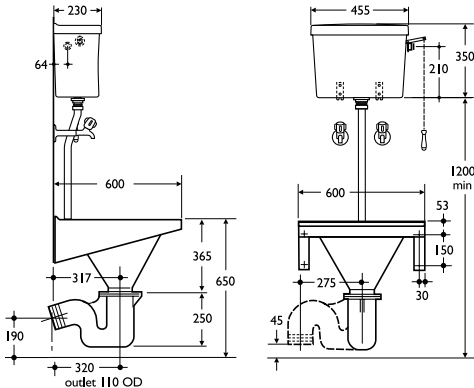
Stainless steel conforms to BS 1449: part 2: 1983

Options

S3591 (16580SS) S trap outlet
S9272 (S09TQ05) stainless steel leg to floor (2 required)

Special notes

HTM64 does not cover for the provision of leg supports to floor



healthcare

htm64 contour urinal

UR-H wall mounted, single, double or triple wall urinal designed for duct services. All connections are completely concealed.

- Wall urinal
- Concealed connections
- Vitreous china
- Hospital pattern

healthcare

HTM64



Illustrated

Range of 3 urinals comprising:
S6110 (261229E) UR-H Contour 67cm urinal
S6286 (743449Z) back inlet spreader
S9275 (7220000) concealed steel hangers
S9276 (7221000) toggle bolts for panel fixing
S8850 (90568N0) 1 1/2in plastic domed waste
S8970 (71428Q4) 1 1/2in plastic swivel P trap with 75mm seal
S6120 (2606000) division with hanger and screw
S6216 (4225200) Conceala auto cistern & cover in plastic, 9 litre capacity with automatic syphon and petcock
S6228 (74460C1) concealed flushpipes and clips

Material

Vitreous china

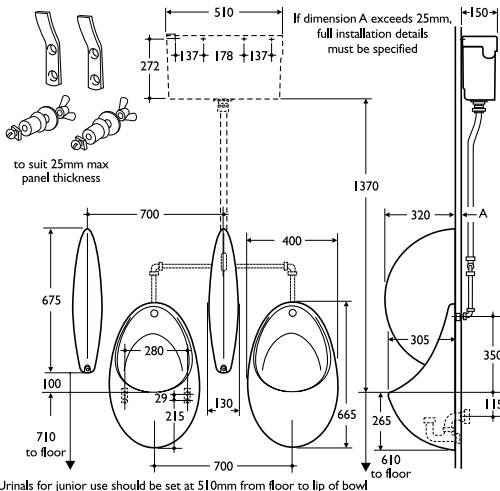
Weight

Urinal 14.0kg
 4.5 litre cistern 3.5kg
 9 litre cistern 3.5kg

Options

Range of 2 urinals as specified above but
S6215 (4225100) Conceala auto cistern in plastic, 4.5 litre
S6227 (74460B1) concealed flushpipes and clips

Single urinal as specified above but
S6215 (4225100) Conceala auto cistern in plastic, 4.5 litre
S6226 (74460A1) concealed flushpipe and clip



healthcare

htm64 sanura urinal

UR-G Wall mounted single, double or triple urinal with exposed automatic cistern and pipework.

- Wall urinal
- Vitreous china
- General pattern

healthcare

HTM64



Illustrated

Range of 3 urinals comprising:
S6100 (261129E) UR-G Sanura 50cm wall urinal
S6285 (74344A1) top inlet spreader
S9275 (7220000) concealed steel hangers
S8850 (90568N0) 1 1/2in plastic domed waste
S8915 (70238Q4) 1 1/2in plastic bottle trap with 75mm seal
S6120 (2606000) division with hanger and screw
S6201 (17542WE) Mura auto cistern 9.0 litre capacity, automatic syphon, petcock and supports
S6222 (74450C1) polished stainless steel flushpipes, chrome plated clips

Material

Vitreous china

Weight

Urinal 10.0kg
 4.5 litre cistern 6.5kg
 9 litre cistern 9.0kg

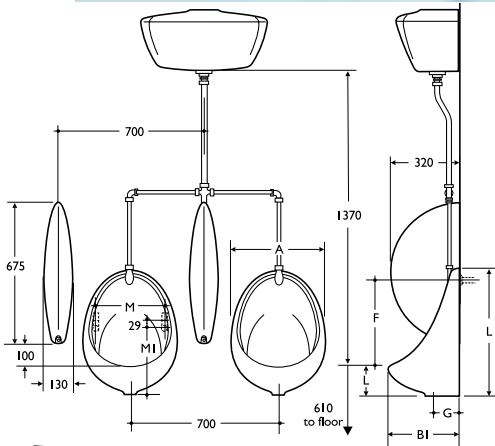
Standards

Vitreous china to BS 3402

Options

Range of 2 urinals, as specified above but
S6200 (17541WE) Mura auto cistern 4.5 litre capacity
S6221 (74450B1) polished stainless steel flushpipes, chrome plated clips

Single urinal, as specified as above but
S6200 (17541WE) Mura automatic cistern 4.5 litre capacity
S6220 (74450A1) polished stainless steel flushpipe with clip



	A	BI	F	G	J	L	M	M1
500mm size	390	305	350	120	500	100	280	205
400mm size	300	250	265	100	400	85	205	170

Urinals for junior use should be set at 510mm from floor to tip of bowl



healthcare

htm64 contour wc

WC-H/A rimless type washdown WC pan, solid back-to-wall with horizontal outlet and back inlet for ducted cistern.

healthcare

HTM64

- Hospital pattern WC
- Adult pattern
- For duct fitting
- Vitreous china



Illustrated

S3420 (150701A)
 (WC-H/A) Contour washdown WC, solid back-to-wall with back inlet, horizontal outlet
 S3710 (42180JE)
 Conceala cistern & cover 6 litre capacity with Freeflo plastic syphon fittings, 1/2in Microvalve HP/LP side supply ballvalve, internal overflow, plastic flushbend, lever extended through wall, Simpla inlet connector
 S4060 (68940BZ)
 Bakasan seat & cover, stainless steel rod, chrome plated hinges
 S9101 (7550BPR)
 Domex screws

Material

Vitreous china

Weight

WC 18.0kg
 Cistern 4.0kg
 Seat & cover 2.3kg

Colours

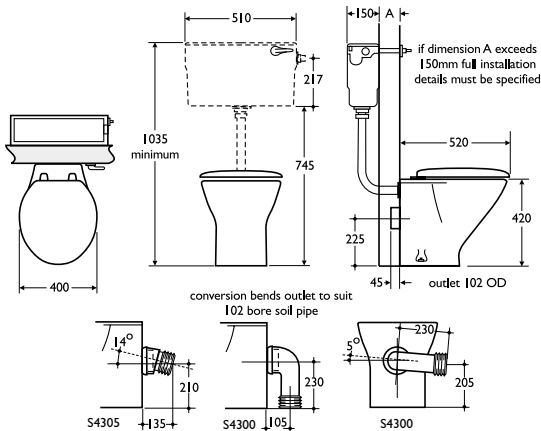
Available in White only

Standards

Vitreous china to BS 3402

Associated products

Panekta connectors
 S4305 (9013000) converts to P trap
 S4300 (9014000) converts to S trap or turned P trap



healthcare

htm64 junior profile wc

WC-H/C low height solid back-to-wall
WC pan with horizontal outlet and back
inlet for duct cistern.

- Suitable for children
- Concealed cistern
- Vitreous china

healthcare

HTM64



Illustrated

S3455 (154801A)
(WC-H/C) Junior Profile
washdown WC in
vitreous china, solid
back-to-wall with back
inlet

S3710 (42180JE)
Conceala cistern &
cover, 6 litre capacity
with Freeflo plastic
syphon fittings, 1/2in
Microvalve HP/LP
side supply ballvalve,
internal overflow,
plastic flushbend
and lever extended
through wall, Simpla
inlet connector
S4060 (68940B2)
Bakasan seat & cover,
stainless steel rod,
chrome plated hinges
S9101 (7550BPR)
Domex screws (pair)

Material

Vitreous china

Weight

WC 19.0kg
Cistern 4.0kg
Seat & cover 2.3kg

Colours

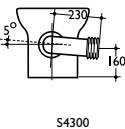
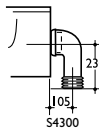
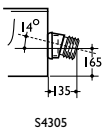
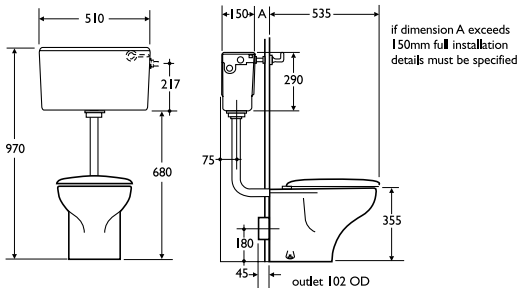
Available in White only

Standards

Vitreous china to
BS 3402

Associated products

Panekta connectors
S4305 (9013000)
converts to P trap
S4300 (9014000)
converts to S trap or
turned P trap



conversion bends outlet
to suit 102 bore soil pipe



healthcare

htm64 braemar wc

WC-HC/A wall mounted, washdown WC pan with shrouded P trap outlet and back inlet for ducted cistern.

healthcare

HTM64

- Hospital pattern
- Wall mounted
- Concealed cistern



Illustrated

S6800 (150001T)
 (WC-HC/A) Braemar wall mounted, washdown WC, P trap outlet, with back inlet
S9200 (72960NP)
 support frame in aluminium alloy with bolts
S3710 (42180JE)
 Conceala cistern & cover, 6 litre capacity with Freeflo plastic syphon fittings, 1/2in Microvalve HP/LP side supply ballvalve, internal overflow, plastic flushbend, lever extended through wall, Simpla inlet connector
S4055 (68940B1)
 Gemini seat & cover

Material

Vitreous china

Weight

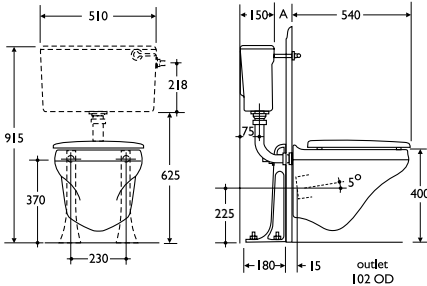
WC 19.0kg
 Supports 3.5kg
 Cistern 4.0kg
 Seat & cover 2.2kg

Colours

Available in White only

Standards

Vitreous china to BS 3402



maximum wall thickness (dimension A) is 150mm



healthcare

htm64 magna wc

WC-G/L washdown WC suite with horizontal outlet and low level cistern.

Bottom supply cistern fittings are not reversible.

- Low level cistern
- General low level pattern
- Vitreous china

healthcare

HTM64



Illustrated

S3510 (149701A)
(WC-G/L) Magnia washdown WC pan in vitreous china with horizontal outlet
S3905 (17730BG) 6 litre cistern with Freeflo plastic syphon fittings, 1/2in Microvalve HP/LP bottom supply ballvalve, internal overflow, plastic flushbend, Simpla inlet connector, supports and screwdown secure cistern cover
S4060 (68940B2) Bakasan seat & cover, stainless steel rod, chrome plated hinges
S9102 (7550BFR) Domex screws (set of 4)

Material

Vitreous china

Weight

WC 12.0kg
Cistern 19.0kg
Seat & cover 2.3kg

Colours

Available in White only

Standards

Vitreous china to BS 3402

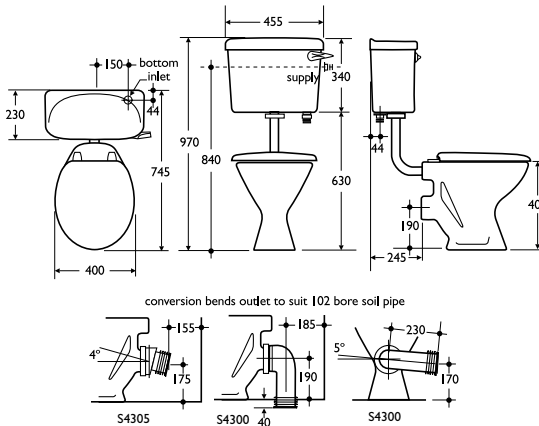
Options

S3902 (17730BA) cistern with bottom supply and internal overflow (without cistern cover securing device)

Associated products

Panekta connectors

S4305 (9013000) converts to P trap
S4300 (9014000) converts to S trap or turned P trap



healthcare

htm64 wentworth 2

WC-G/C short projection washdown WC with horizontal outlet.

Bottom supply cistern fittings are not reversible.

- General close coupled pattern
- Choice of cisterns
- Short projection WC

healthcare

HTM64



Illustrated

S3161 (S316101)
(WC-G/C) Wentworth close coupled washdown WC pan with horizontal outlet

S3927 (17686FL) 6 litre cistern for bottom supply, internal overflow with Freeflo plastic syphon fittings and 1/2in Microvalve bottom supply ballvalve with Whisperflo refill unit, internal overflow, close coupling fitment and screwdown secure cistern cover

S4063 (68940B8) Bakasan seat only with chrome plated pillars
S9101 (7550BPR) Domex screws (pair)

Material
Vitreous china

Weight

WC 15.5kg
Cistern 19.0kg
Seat & cover 1.79kg

Colours

Available in White only

Standards

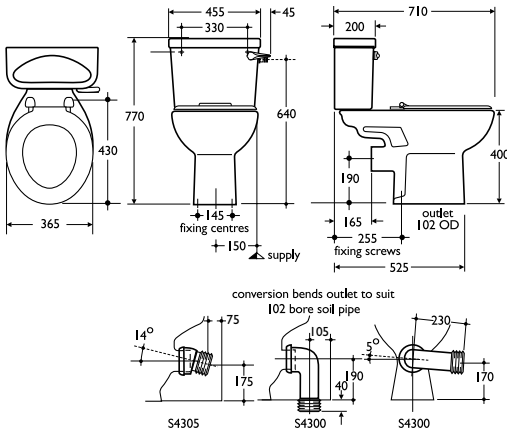
Vitreous china to BS 3402

Options

S3920 (17686FB) Cistern with bottom supply and internal overflow (without cistern cover securing device)

Associated products

Panekta connectors
S4305 (9013000) converts to P trap
S4300 (9014000) converts to S trap or turned P trap



healthcare

htm64 contour washbasin

LB-H hospital washbasins in 2 sizes.
Specially designed for use with ducted services, incorporating concealed back outlet and fixings.

Particularly suitable for IPS panels.

- Hospital pattern basins
- Medium and small
- For ducted services

healthcare

HTM64



Illustrated

S2295 (112424K)
(LB-H/M) Contour washbasin in vitreous china, 50cm x 40cm, no tapholes, no overflow, no chainstay hole
S8210 (800247V) (TBH2) Markwik lever action wall mounted mixer
S8750 (70087NP) 1 1/4in outlet adapter
S8746 (C09CE01) plastic strainer
S8910 (70237Q4) (TR1/P) 1 1/4in plastic bottle trap with 75mm seal
S9161 (79030X6) concealed hangers, toggle bolts and clips (50cm size)

Weight

50cm washbasin 12.0kg
38cm washbasin 8.0kg

Colours

Available in White only

Standards

Vitreous china to BS 3402

Options

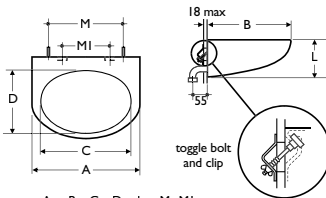
S2290 (112414K) (LB-H/S) Contour washbasin in vitreous china, 38cm x 33cm, no tapholes, no overflow, no chainstay hole
S9112 (71920X6) concealed hangers, toggle bolts and clips (50cm size)

Material

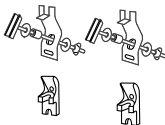
Vitreous china

Special notes

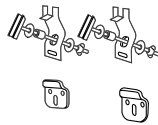
Toggle bolts and outlet adapter suitable for maximum panel thickness of 18mm



A	B	C	D	L	M	MI
380	330	310	235	185	280	140
500	400	450	305	200	370	200



S9161



S9112



healthcare

htm64 contour variants

LB-H washbasin assemblies for use in connection with medical and nursing procedures.

Hospital pattern basins are for washing under running water and therefore no plugs are provided.

Hospital lever action or Sensorflow taps should be specified to avoid contamination. Waste, trap and brackets are as previous page.

healthcare

HTM64



- *Running water basins*
- *Lever action taps*
- *Sensorflow option*

- *Lever mixer*

Illustrated

S2295 (112424K)
(LB-H/M) 30cm x 40cm
washbasin
S8210 (800247V) (TBH2)
Markwik in lever action
wall mounted mixer
with swivel
anti splash nozzle

Options

S2290 (112414K) LB-H/S
38cm x 33cm washbasin



- *Single lever tap*

Illustrated

S2295 (112424K)
(LBH/M) 50cm x 40cm
washbasin
S8271 (806041E) (TBH1)
Markwik 1/2in lever
action bib tap
S8345 (8174B00) 75mm
extension

S8335 (8147000) 1/2in
wall mount for
concealed plumbing

Options

S2290 (112414K) LB-H/S
38 x 33cm washbasin

Special notes

For water supplied at
controlled temperature



- *Sensorflow tap*

Illustrated

S2295 (112424K)
(LBH/S) 50cm x 40cm
washbasin
S8102 (7883402) (TBH6)
Sensorflow panel
mounted proximity
sensor spout
S8100 (7963002) (TBH6)
programmable control

unit to operate up to 10
outlets

Options

S2290 (112414K) LB-H/S
38cm x 33cm washbasin

Special notes

For water supplied at
controlled temperature



healthcare

htm64 portman washbasin

LB-G general purpose washbasin available in 3 sizes, small, medium or large with bottom outlet.

Particularly suitable for IPS panels when using wall mounted fittings.

- General purpose washbasin
- Three sizes
- Extensive taphole permutations

healthcare

HTM64



Illustrated

S2262 (117933U)
(LB-G/L) Portman general purpose large washbasin, 60cm x 48cm, 2 tapholes, no overflow, no chainstay hole
S7195 (6624400)
(TP1) Nimbus 1/2in raised nose pillar taps
S8715 (70017N6)
(WT3) 1 1/4in bead chain waste 80mm unslotted tail, screw stay
S8920 (7360700)
(TRR1/P) 1 1/4in plastic bottle trap with 75mm seal
S8975 (7356700) plastic extension to wall and wall flange, straight outlet
S9150 (7900000) concealed bracket with fixing clamps complete with centre waste bracket in aluminium alloy

Options

S2222 (117923U)
(LB-G/M) Portman general purpose medium washbasin, 50cm x 42cm, 2 tapholes at 20cm, no overflow, no chainstay hole
S7100 (6973400) (TP1) Nuastyle 1/2in pillar taps
S9160 (7903000) hangers and fixing clamps in aluminium alloy
S2212 (117915R)
(LB-G/S) Portman general purpose small washbasin, 40cm x 37cm, single right hand taphole, no overflow, no chainstay hole
S7101 (697341G) (TP1) Nuastyle 1/2in pillar taps (dual indices)
S9160 (7903000) hangers and fixing clamps in aluminium alloy

Special notes

S9160 (7903000) brackets are suitable for 40cm and 50cm basins only

Material

Vitreous china

Weight

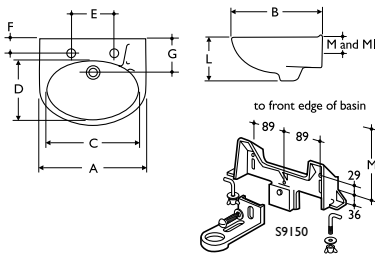
60cm washbasin 15.0kg
50cm washbasin 11.5kg
40cm washbasin 9.0kg

Colours

Available in White only

Standards

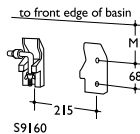
Vitreous china to BS 3402



Scale 1:25 approx. (A4 page)

A	B	C	D	E	F	G	L	M	MI
400	365	330	220	100	70	170	190	80	50
500	420	445	280	200	76	170	200	100	70
600	480	530	330	200	76	170	230	100	70

S9160 brackets are suitable for 400 and 500mm basins only



healthcare

htm64 portman variants

LB-G general basins for washing in a reservoir of water, therefore requiring a washbasin with plug.

healthcare

HTM64

- Three sizes
- Reservoir washing
- With plug



With plug

Use S8715 (70017N6)
1 1/4in bead chain waste:
screw stay

**2 tapholes,
no overflow,
no chainstay hole**
S2222 (117923U)
(LBG/M) 50cm x 42cm
S2262 (117933U)
(LBG/L) 60cm x 48cm
S7195 (6624400)
(TP1) Nimbus 1/2in
raised nose pillar taps

**No tapholes,
no overflow,
no chainstay hole**
S2236 (117924K)
(LBG/M) 50cm x 42cm
S2272 (117934K)
(LBG/L) 60cm x 48cm
S7205 (6610400)
(TB3) Nimbus bib taps
S8336 (81470PR)
wall mounts
S8346 (8174BPR) 1/2in
extensions, 75mm long

**No tapholes,
no overflow,
no chainstay hole**
S2236 (117924K)
(LBG/M) 50cm x 42cm
S2272 (117934K)
(LBG/L) 60cm x 48cm
S8270 (806041D)
(TBH1) Markwik bib taps
S8336 (81470PR)
wall mounts
S8346 (8174BPR) 1/2in
extensions, 75mm long

**No tapholes,
no overflow,
no chainstay hole**
S2236 (117924K)
(LBG/M) 50cm x 42cm
S2272 (117934K)
(LBG/L) 60cm x 48cm
S7315 (61104XX)
(TB5) 1/2in wall mounted
mixer, body only
S8030 (63764XX)
all metal handles



healthcare

HTM64 portman variants

LB-G general basins for handrinsing, hairwashing with spray and other washing under running water, therefore no plug is required.

- Three sizes
- Hairwashing
- Handrinsing

healthcare

HTM64



No plug required
Use S8720 (70027N9)
1 1/4in brass strainer
waste

**No tapholes,
no overflow,
no chainstay hole**
S2272 (117934K)
(LBG/L) 60cm x 48cm
S7805 (69914AGCP)
(TM1) Starlite
thermostatic mixer
S9401 (78924JU)
flexible hose and
handset

**One right hand
taphole, no overflow,
no chainstay hole**
S2212 (117915R)
(LBG/S) 40cm x 37cm
S2244 (117925R)
(LBG/M) 50cm x 42cm
S7440 (6409200)
(TP6) Spraymixa tap

**One right hand
taphole, no overflow,
no chainstay hole**
S2212 (117915R)
(LBG/S) 40cm x 37cm
S2244 (117925R)
(LBG/M) 50cm x 42cm
S7445 (8029Y00)
(TP6) short lever
action mixer tap

**No tapholes,
no overflow,
no chainstay hole**
S2203 (117914K)
(LBG/S) 40cm x 37cm
S2236 (117924K)
(LBG/M) 50cm x 42cm
S7421 (625432R)
(TB7) Starlite wall
mounted single mixer
with spray outlet

**One central taphole,
no overflow,
no chainstay hole**
S2213 (117915S)
(LBG/S) 40cm x 37cm
S2245 (117925S)
(LBG/M) 50cm x 42cm
B1990 (6312W00)
(TP8) Piccolo single
lever washbasin mixer



healthcare

htm64 profile washbasin

LB-GS/M semi-countertop medium washbasin for use in vanity units and countertops. Suitable for installation in residential areas.

healthcare

HTM64

- General purpose washbasin
- Residential areas
- Semi-countertop washbasin



Illustrated

S2442 (123313V)
(LB-GS/M) Profile semi-countertop washbasin, 2 tapholes, no overflow
S7100 (6973400) (TP1) Nuastyle 1/2in pillar taps
S8802 (90547N5) 1 1/4in waste with plug & chain
S8910 (70237Q4) (TR 1/P) 1 1/4in plastic bottle trap with 75mm seal

Material

Vitreous china

Weight

Washbasin 9.0kg

Colours

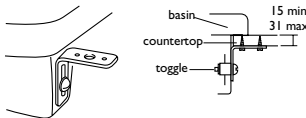
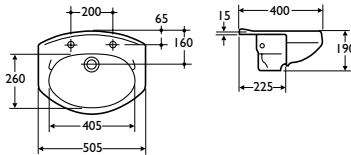
Available in White only

Standards

Vitreous china to BS 3402

Options

S2445 (1233155)
(LB-GS/M) Profile semi-countertop washbasin, single central taphole, no overflow
B1990 (6312W00) (TP8) Piccolo 2 single lever washbasin mixer, no waste



healthcare

htm64 tiffany washbasin

LB-GS/L semi-countertop large washbasin for use in countertops. Suitable for installation in residential areas.

- General purpose large washbasin
- Semi-countertop
- Residential areas

healthcare

HTM64



Illustrated

S2433 (121713V)
(LB-GS/L) Tiffany semi-countertop washbasin, 2 tapholes, no overflow
S7100 (6973400) (TP1) Nuastyle 1/2in pillar taps
S8802 (90547N5) 1 1/4in waste with plug & chain
S8910 (70237Q4) (TR 1/P) 1 1/4in plastic bottle trap with 75mm seal

Material

Vitreous china

Weight

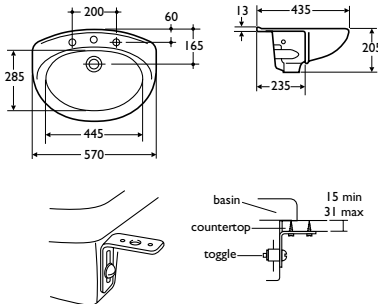
Washbasin 11.0kg

Colours

Available in White only

Standards

Vitreous china to BS 3402



healthcare

htm64 planet

LB-GI/S small washbasin for use in countertops. Suitable for installation in residential areas.

healthcare

HTM64

- Countertop washbasin
- General purpose small washbasin
- Optional vanity top
- Vitreous china



Illustrated

S2581 (123013V)
 (LB-GI/S) Planet
 countertop washbasin,
 2 tapholes, no overflow
 S7100 (6973400) (TP1)
 Nuastyle 1/2in pillar taps
 S8802 (90547N5) 1 1/4in
 waste with plug & chain
 S8910 (70237Q4)
 (TR 1/P) 1 1/4in
 plastic bottle trap
 with 75mm seal

Material

Vitreous china

Weight

Washbasin 6.5kg

Colours

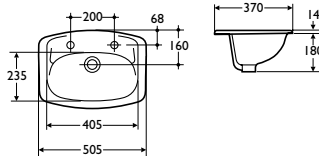
Available in White only

Standards

Vitreous china to
 BS 3402

Associated products

S5236 (56231NP)
 plain vanity top 60cm
 x 43cm (no cut out)



healthcare

htm64 orbit washbasin

LB-GI/M self-rimming countertop medium washbasin. Suitable for installation in residential areas.

healthcare

HTM64



Illustrated

S2557 (123115S)
 (LB-GI/M) washbasin
 with single central
 taphole, no overflow
B1990 (6312W00) (TP8)
 Piccolo 2 single lever
 washbasin mixer
S8802 (90547N5)
 1 1/4in waste with plug
 and chain
S8910 (70237Q4)
 (TR 1/P)1 1/4in plastic
 bottle trap with
 75mm seal

Material

Vitreous china

Weight

Washbasin 7.5kg

Colours

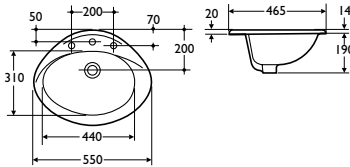
Available in White only

Standards

Vitreous china to
 BS 3402

Options

S2554 (123113V)
 55cm with 2 tapholes
 and chainstay hole,
 no overflow



healthcare

htm64 valencia washbasin

LB-GI countertop medium or large vanity washbasin with integral countertop. Suitable for installation in residential areas. Manufactured in stain and chemical resistant fireclay.

- Countertop washbasin
- Large and medium sizes
- Stain and chemical resistant
- Fireclay

healthcare

HTM64



Illustrated

S2633 (3034155)
(LB-GI/M) Valencia medium washbasin in fireclay, 61cm wide, single central taphole, no overflow
B1990 (6312W00) (TP8)
Piccolo 2 single lever washbasin mixer
S8802 (90547N5) 1 1/4in waste with plug & chain
S8910 (70237Q4) (TR1/P) 1 1/4in plastic bottle trap with 75mm seal

Material

Fireclay

Weight

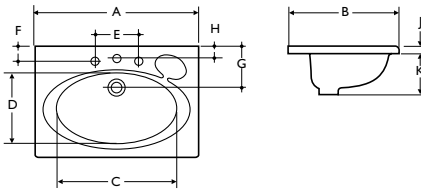
61cm washbasin 16.3kg
77cm washbasin 24.6kg

Colours

Available in White only

Options

S2643 (3034255)
(LB-GI/L) Valencia large washbasin in fireclay 77cm wide, single central taphole, no overflow



A	B	C	D	E	F	G	H	J	K
610	425	445	265	205	70	195	65	32	170
770	520	545	335	205	70	200	55	32	195



healthcare

htm64 nisa steel bath

BA H/M flat topped steel bath for assisted use. For general bathing only.

- Steel bath
- Handgrips
- General bathing

healthcare

HTM64



Illustrated

- S1864** (52402D8) (BA-H/M) Nisa steel bath with handgrips 170cm, no tapholes
- S7615** (61394XX) (TB6) Millenia 1/2in concealed wall mounted mixer, body only
- S8030** (63764XX) metal handles
- S7805** (69914AG) (TM-1) Starlite concealed thermostatic valve
- S9401** (78924J0) flexible hose with handset and wall bracket & wall union
- S8780** (70828N4) 1 1/2in chain waste with large base chainstay (overflow stopper)
- S8970** (71428Q4) 1 1/2in plastic P trap, 75mm seal
- S0915** (43552V9) plastic flat front panel
- S0916** (43551V0) plastic flat end panel
- S9365** (7728000) corner strip

Material

2.9mm heavy gauge porcelain enamelled supersteel

Weight

170cm bath 55.0kg

Capacity

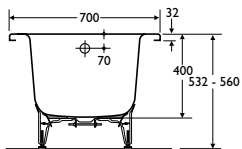
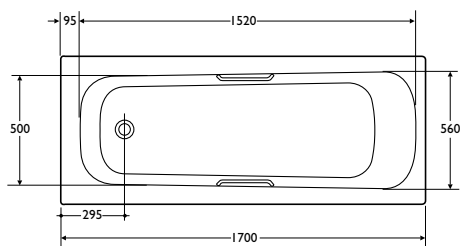
37 gallons/166 litres (to overflow)

Colours

Available in White only

Special notes

Not suitable in areas involving the use of special chemicals. Thermostatic valve is TMV3 approved



healthcare

htm64 lichfield bath

BA -H/P general purpose acrylic bath for assisted bathing.

healthcare

HTM64

- Acrylic bath assembly
- End and front panels
- For assisted bathing



Illustrated

S1490 (46372E5)
 (BA-H/P) Lichfield bath with wall brackets and adjustable feet, no tapholes, no overflow
S7615 (61394XX)
 (TB6) Millenia 3/4in concealed wall mounted mixer, body only
S8030 (63764XX)
 metal handles
S8780 (70828N4)
 1 1/2in chain waste, large base stay
S8970 (71428Q4)
 1 1/2in plastic P trap, 75mm seal

Weight

Bath 20.5kg

Capacity

42 gallons/190 litres (to overflow)

Colours

Available in White only

Options

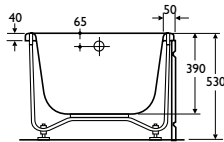
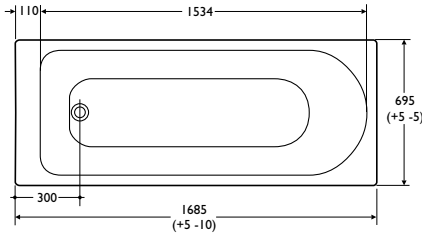
S7805 (69914AG) (TM1)
 Starlite thermostatic concealed shower mixer
S9401 (78924J0)
 with flexible hose and handset, wall bracket & wall union

Material

Idealform™ cast acrylic sheet, fully reinforced

Special notes

Thermostatic valve is TMV3 approved



healthcare

htm64 shetland bath

BA-H/P assisted bath offered in 2 heights, 77cm and 63cm, pre-assembled and ready for installation.

Bath hoist illustrated is not included in the assembly.

- Assisted bath assembly
- Available in 2 heights
- Optional shower mixer
- With plinth and panels

healthcare

HTM64



Illustrated

S1515 (43132D8)
(BA-H/P) Shetland bath, height 77cm, no tapholes, no overflow, wooden plinth, with 3 plastic panels including inspection panel, edging strips, 1 1/2in chain waste, large base stay
S7615 (61394XX) (TB6) Millenia 1/2in concealed wall mounted mixer, body only
S8030 (63764XX) metal handles
S8970 (71428Q4) 1 1/2in plastic P trap, 75mm seal

Material

Idealform™ cast acrylic sheet, fully reinforced

Weight

77cm high bath 38.0kg
63cm high bath 37.0kg

Colours

Available in White only

Options

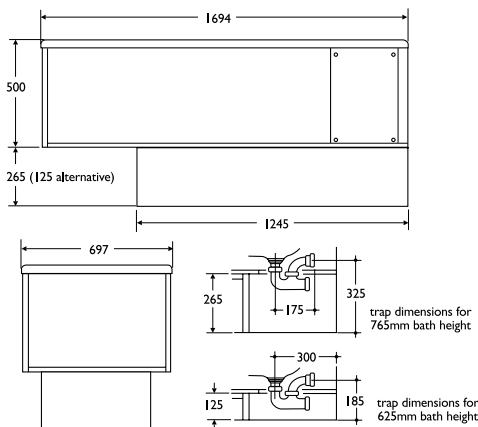
S1513 (43131D8)
(BA-H/P) Shetland bath, height 63cm, no tapholes, no overflow, wooden plinth, with 3 plastic panels including inspection panel, edging strips, 1 1/2in chain waste, large base stay (overflow stopper)

Associated products

S7805 (69914AG) (TM1) Starlite thermostatic concealed shower mixer
S9401 (78924J0) flexible hose and handset, wall bracket & wall union

Special notes

Thermostatic valve is TMV3 approved



healthcare

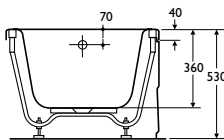
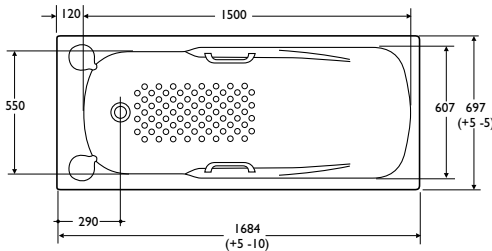
htm64 sandringham bath

BA-G a general purpose bath for personal bathing by patients alone or assisted by staff.

healthcare

HTM64

- Twin handgrips
- Optional end panel
- Reinforced acrylic



Illustrated

S1594 (46472D8) (BA-G) Sandringham bath with handgrips, wall brackets and adjustable feet, no tapholes
S7615 (61394XX) (TB6) Millenia 1/2in concealed wall mounted mixer, body only
S8030 (63764XX) metal handles
S8830 (902685P) combined chain waste and overflow
S0905 (44911G9) Universal moulded front panel
S0906 (44911K0) Universal moulded end panel

Material

Idealform™ cast acrylic sheet, fully reinforced

Capacity

44 gallons/200 litres

Weight

Bath 19.5kg
 Front panel 2.0kg
 End panel 1.0kg

Colours

Available in White only

Options

S1593 (46472D6) (BA-G) Sandringham bath with tapholes
S7200 (6624500) (TP2) Nimbus 3/4in pillar taps
S7805 (69914AG) (TM1) Starlite thermostatic concealed shower mixer
S9401 (78924J0) flexible hose and handset, wall bracket and wall union

Special notes

Thermostatic valve is TMV3 approved



healthcare

htm64 profile general bidet

BD-G back-to-wall bidet for use in general areas.

- General bidet
- Vitreous china
- Back-to-wall

healthcare

HTM64



Illustrated

- S4922 (1815255) (BD-G) Profile bidet with over rim supply, single central taphole, no overflow
- B1990 (6312W00) Piccolo 2 single lever mixer
- S8720 (70027N9) (WT1) 1 1/4in strainer waste
- S8965 (71427Q4) 1 1/4in plastic P trap with 75mm seal, multi-purpose outlet
- S5379 (7754000) spacer box
- S9101 (7550BPR) Domex screws (2)

Material

Vitreous china

Weight

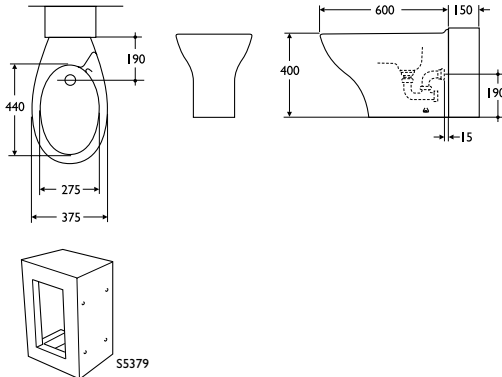
Bidet 17.0kg

Colours

Available in White only

Standards

Vitreous china to BS 3402



healthcare

htm64 clyde plaster sink

PS-H plaster sink unit and sump to accommodate strainer and prevent plaster from blocking the drain, with or without tapholes.

Available with sink at left or right hand side.

- *Stainless steel*
- *Plaster sink*
- *With or without tapholes*
- *Left or right handed*

healthcare

HTM64



Illustrated

S6531 (53171L0) (PS-H) Clyde left hand plaster sink and work surface in stainless steel with integral brackets, no tapholes, with strainer basket, lid, 1 1/2in vulcanite standing tube, and combined waste, overflow and connecting pipe
 S8210 (800247V) (TBH2) Markwik 1/2in wall mounted mixer with swivel nozzle, anti splash outlet and concealed inlets

Material

18 gauge stainless steel sheet

Weight

Sink 34.0kg

Finish

Polished stainless steel

Standards

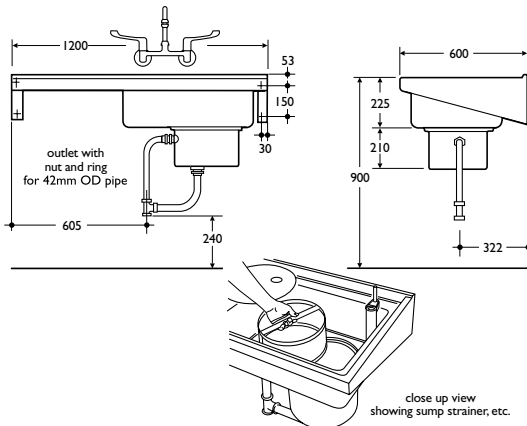
Stainless steel sheet to BS 1449: Part 2: 1983

Options

S6530 (53171R0) (PS-H) right hand sink with work surface, no tapholes
 S6533 (53171L2) (PS-H) left hand sink with work surface and tapholes
 S6532 (53171R2) (PS-H) right hand sink with work surface and tapholes
 S8200 (800047V) Markwik 1/2in pillar mixer with swivel nozzle
 S9272 (S09TQ05) stainless steel leg supports

Special notes

HTM64 does not cover for leg supports to floor



healthcare

htm64 firth scrub-up trough

SU-H surgeons' scrub-up trough in units of 80cm, 160cm and 240cm for one, 2 or 3 persons, complete with 1 1/2in strainer waste and optional trap cover.

Other lengths are available to special order up to a maximum of 305cm.

- Surgeons' scrub-up trough
- Stainless steel
- Special lengths available

healthcare

HTM64



Illustrated

S2860 (54163RC) (SU-H3) 240cm with right hand outlet, strainer waste & trap cover
S8231 (801147X) (TBH3) Markwik 1/2in wall mounted mixer, lever operation, horizontal spray outlet and concealed supplies
S8925 (7360800) (TRR2/P) 1 1/2in plastic resealing bottle trap with removable sump, 75mm seal

Material

18 gauge stainless steel

Weight

240cm trough 67.0kg
 160cm trough 41.0kg
 80cm trough 23.0kg

Finish

Polished stainless steel

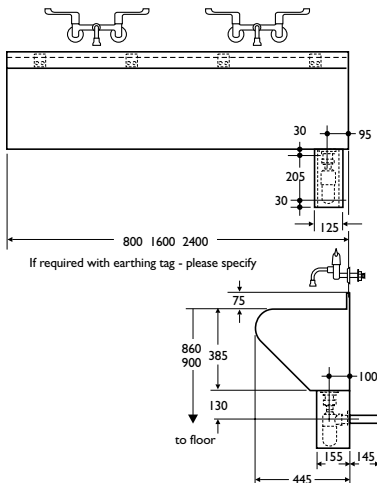
Standards

Stainless steel conforms to BS 1449: Part 2: 1983

Options

S2851 (54161LW) (SU-H1) 80cm with left hand outlet and strainer waste
S2853 (54161RW) 80cm with right hand outlet and strainer waste
S2850 (54161LC) 80cm with left hand outlet, strainer waste & trap cover
S2852 (54161RC) 80cm with right hand outlet, strainer waste & trap cover

S2855 (54162LW) (SU-H2) 160cm with left hand outlet and strainer waste
S2857 (54162RW) 160cm with right hand outlet and strainer waste
S2854 (54162LC) 160cm with left hand outlet, strainer waste & trap cover
S2856 (54162RC) 160cm with right hand outlet, strainer waste & trap cover
S2859 (54163LW) (SU-H3) 240cm with left hand outlet and strainer waste
S2861 (54163RW) 240cm with right hand outlet and strainer waste
S2858 (54163LC) 240cm with left hand outlet, strainer waste & trap cover
S8270 (806041D) (TBH1) Markwik lever action bib taps
S8336 (81470PR) 1/2in wall mounts for concealed supplies (pair)
S8102 (7883402) (TBH6) Sensorflow panel mounted proximity spout
S8100 (7963002) programmable control unit for up to 10 outlets



healthcare
htm64 lincoln

SH-G/P shower tray assembly for general use with slip resistant base. Stable leg fixing and separate panels for ease of installation.

- Stable fixing
- Slip resistant base
- Inclusive waste

healthcare

HTM64



Illustrated

L5010 (SH-G/P) Lincoln shower tray 80cm x 80cm in plastic with slip resistant base, no overflow, chrome plated 1 1/2in strainer waste, front and end panels
S7805 (69914AG) (TM1) Startite 1/2in concealed thermostatic mixer valve with
S9396 (78914J0) flexible hose, handspray and sliding rail & wall union

Options

S7840 (66824AH) (MM2) Supamix 1/2in concealed manual mixer valve
S9329 (66914K4) angled shower arm
S9320 (6688400) Triton shower head
S7840 (66824AH) (MM1) Supamix 1/2in concealed manual mixer
S9396 (78914J0) flexible hose, handspray, sliding rail and wall union

Material

Idealform™ cast acrylic sheet, fully reinforced

Special notes

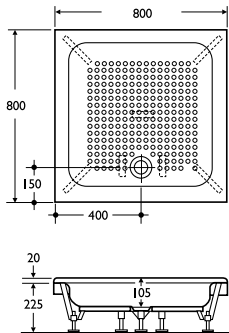
Thermostatic shower valve conforms to NHS TMV3 approval scheme

Weight

11.0kg

Colours

Available in White only



healthcare

htm64 modula shower tray

SH-G/C floor standing square
fireclay shower receiver.

- For general use
- Robust and hardwearing
- SH-G/C shower tray

healthcare

HTM64



Illustrated

S5892 (3320200)
SH-G/C Modula shower
tray, 82cm x 82cm in
fireclay with slip
resistant base,
no overflow

Material
Fireclay

Weight
74.0kg

Colours
Available in White only

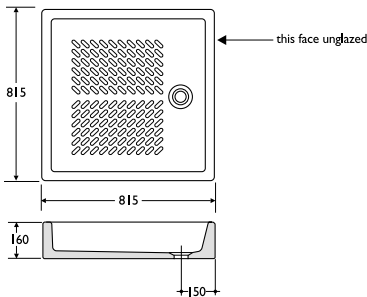
Standards
Conforms to BS 6340:
part 8

Options

S7840 (66824AH) (MM2)
Supamix 1/2in concealed
manual mixer valve
S9329 (66914K4) angled
shower arm
S9320 (6688400) Triton
shower head
S7840 (66824AH) (MM1)
Supamix 1/2in concealed
manual mixer valve
S9396 (78914J0)
flexible hose, handspray
and sliding rail &
wall union
S7805 (69914AG)
Starlite 1/2in concealed
thermostatic mixer
valve
S9396 (78914J0)
flexible hose,
handspray, and sliding
rail & wall union

Special notes

Outside face on waste
side is unglazed



healthcare

htm64 doon single sink

SK-1 single bowl stainless steel sink in 2 depths.

healthcare

HTM64

- Stainless steel
- 2 sink depths
- Screw to wall
- With or without tapholes



Illustrated

S5861 (533014K) (SK-1) Doon single bowl sink, 60cm x 60cm, no tapholes, no overflow
S7206 (661041G) Nimbus 1/2in bib taps with H+C dual indices, anti splash outlet
S8346 (8174BPR) 75mm extension pieces (pair)
S8331 (8146OPR) 1/2in wall mounts with exposed inlets (pair)
S8767 (70668N7) (WT-4) 1 1/2in chain waste, unslotted 50mm tail with bolt stay
S8925 (7360800) (TRR2-P) 1 1/2in plastic resealing bottle trap, 75mm seal and multi-purpose outlet

Finish

Polished stainless steel

Standards

Stainless steel sheet to BS 1449: Part 2: 1983. Conforms to HTM64 Sanitary Assemblies

Options

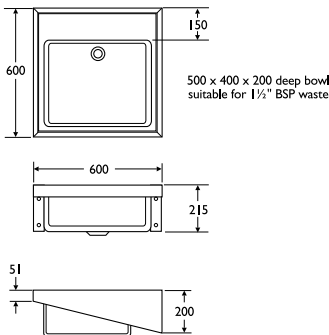
S5860 (533013U) Doon sink, 60cm x 60cm, 2 tapholes
S5862 (533023U) Doon sink, 60cm x 65cm, 1 1/2in chain waste, 2 tapholes
S5863 (533024K) Doon sink, 60cm x 65cm, no tapholes
S9272 (S09TQ05) stainless steel legs to floor (2 required)

Material

18 gauge stainless steel sheet

Special notes

HTM64 does not cover for leg supports to floor



healthcare

htm64 doon double sink

SK-2 double bowl stainless steel sink in 2 depths.

- Screw to wall
- Stainless steel
- Two sink depths
- With or without tapholes

healthcare

HTM64



Illustrated

S5864 (533113U)
(SK-2) Doon double bowl sink 120cm x 60cm, with tapholes, no overflow

S8275 (809047V)
Markwik twin flow 1/2in pillar mixer, with 15cm levers and swivel nozzle (2)

S8767 (70668N7)
(LWT4) 1 1/2in chain waste unslotted 50mm tail and bolt stay (2)

S8925 (7360800)
(TRR2/P) 1 1/2in plastic resealing bottle trap 75mm seal and multi-purpose outlet (2)

Options

S5865 (533114K) Doon sink 120cm x 60cm, no tapholes, no overflow

S5866 (533124U)
Doon sink 120cm x 65cm, 2 tapholes at 20cm, for each bowl, no overflow

S5867 (533124K) Doon sink 120cm x 65cm, no tapholes, no overflow

S9272 (S09TQ05)
stainless steel legs to floor (2 required)

Special notes

HTM64 does not cover for leg supports to floor

Material

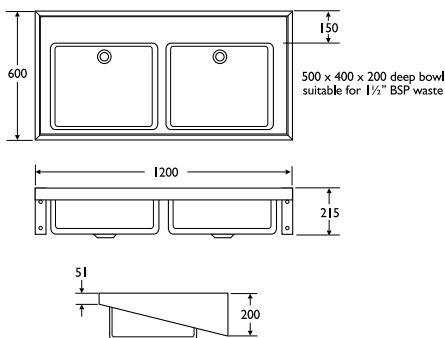
18 gauge stainless steel sheet

Finish

Polished stainless steel

Standards

Stainless sheet to BS 1449: Part 2: 1983.
Conforms to HTM64 Sanitary Assemblies



healthcare

htm64 doon drainer sink

ST-A single bowl, single drainer stainless steel sink in 2 depths.

healthcare

HTM64

- Screw to wall
- Stainless steel
- Two sink depths
- With or without tapholes



Illustrated

S5843 (532714X) (ST-A) Doon sink, single bowl left hand drainer sink 120cm x 60cm, no tapholes, no overflow
S7206 (661041G) Nimbus 1/2in bib taps with H+C dual indices, anti splash outlet
S8346 (8174BPR) 75mm extension pieces (pair)
S8331 (81460PR) 1/2in wall mounts with exposed inlets (pair)
S8767 (70668N7) (WT4) 1 1/2in chain waste unslotted 50mm tail, and bolt stay
S8925 (7360800) (TRR2/P) 1 1/2in plastic resealing bottle trap 75mm seal and multi-purpose outlet

Options

S5841 (532714V) Doon sink, single bowl, right hand drainer, 120cm x 60cm, no tapholes, no overflow
S5842 (532714W) Doon sink, single bowl, left hand drainer, 120cm x 60cm, 2 tapholes at 20cm centres, no overflow
S5840 (532714U) Doon sink, single bowl, right hand drainer 120cm x 60cm, 2 tapholes at 20cm centres, no overflow
S5847 (532724X) Doon sink, single bowl, left hand drainer 120cm x 65cm, no tapholes, no overflow
S5845 (532724V) Doon sink, single bowl, right hand drainer 120cm x 65cm, no tapholes, no overflow
S5846 (532724W) Doon sink, single bowl left hand drainer, 120cm x 65cm 2 tapholes at 20cm centres, no overflow
S5844 (532724U) Doon sink, single bowl right hand drainer, 120cm x 65cm 2 tapholes at 20cm centres, no overflow
S9272 (S09TQ05) stainless steel leg to floor (2 required)

Material

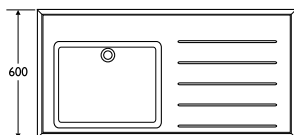
18 gauge stainless steel sheet

Finish

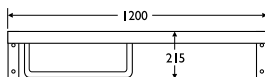
Polished stainless steel

Standards

Stainless sheet to BS 1449; Part 2: 1983. Conforms to HTM64 Sanitary Assemblies



500 x 400 x 200 deep bowl suitable for 1 1/2" BSP waste



healthcare

htm64 doon drainer sink

ST-B single bowl double drainer stainless steel sink in 2 depths.

- Screw to wall
- Stainless steel
- Two sink depths
- With or without tapholes

healthcare

HTM64



Illustrated

S5848 (532813U)
 (ST-B) Doon sink 180cm x 60cm, 2 tapholes at 20cm, no overflow
S8275 (809047V)

Markwik dual flow 1/2in pillar mixer, with 15cm levers and swivel nozzle
S8767 (70668N7) 1 1/2in chain waste unslotted 50mm tail and bolt stay
S8925 (7360800) (TRR2/P) 1 1/2in plastic resealing bottle trap, 75mm seal and multi-purpose outlet

Material

18 gauge stainless steel sheet

Finish

Polished stainless steel

Standards

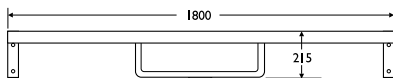
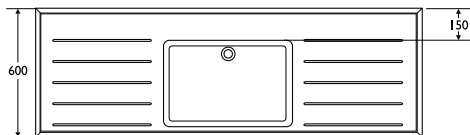
Stainless sheet to BS1449: Part 2: 1983. Conforms to HTM64 Sanitary Assemblies

Options

S5849 (532814K) Doon single bowl double drainer sink 180cm x 60cm, no tapholes, no overflow
S5850 (532823U) Doon sink 180cm x 65cm with 2 tapholes at 20cm centres, no overflow
S5851 (532824K) Doon sink 180cm x 65cm, no tapholes, no overflow
S9272 (S09TQ05) stainless steel leg support (2 required)

Special notes

HTM64 does not cover for leg supports to floor



500 x 400 x 200 deep bowl suitable for 1 1/2" BSP waste



healthcare

htm64 doon drainer sink

ST-C double bowl, single drainer stainless steel sink in 2 depths.

healthcare

HTM64

- Screw to wall
- Stainless steel
- Two sink depths
- With or without tapholes



Illustrated

S5854 (532914W) (ST-C) Doon double bowl left hand drainer sink 180cm x 60cm, 2 tapholes, no overflow
S8275 (809047V) Markwik twin flow 1/2in pillar mixer, with 15cm levers and swivel nozzle
S8767 (70668N7) 1 1/2in chain waste unslotted 50mm tail, and bolt stay (2)
S8925 (7360800) (TRR2/P) 1 1/2in plastic resealing bottle trap 75mm seal and multi-purpose outlet (2)

Options

S5853 (532914V) Doon sink, double bowl, right hand drainer 180cm x 60cm, no tapholes, no overflow
S5855 (532914X) Doon sink, double bowl, left hand drainer 180cm x 60cm, no tapholes no overflow
S5852 (532914U) Doon sink, double bowl, right hand drainer, 180cm x 60cm 2 tapholes no overflow
S5859 (532924X) Doon sink, double bowl, left hand drainer, 180cm x 65cm, no tapholes, no overflow
S5857 (532924V) Doon sink, double bowl, right hand drainer, 180cm x 65cm, no tapholes, no overflow
S5858 (532924W) Doon sink, double bowl, left hand drainer, 180cm x 65cm, 2 tapholes, no overflow
S5856 (532924U) Doon sink, double bowl, right hand drainer, 180cm x 65cm, 2 tapholes, no overflow
S9272 (S09TQ05) stainless steel leg supports (2 required)

Material

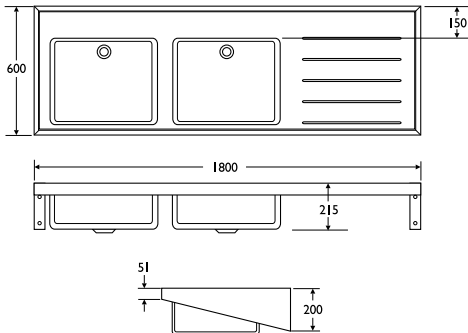
18 gauge stainless steel sheet

Finish

Polished stainless steel

Standards

Stainless steel sheet to BS 1449: Part 2:1983. Conforms to HTM64 Sanitary Assemblies



500 x 400 x 200 deep bowl suitable for 1 1/2" BSP waste

Special notes

HTM64 does not cover for leg supports to floor



healthcare

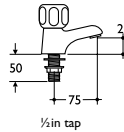
htm64 pillar taps

Fittings for sanitary assemblies conforming to HTM64.

healthcare

HTM64

- *Nimbus taps*
- *Nuastyle taps*
- *Pillar taps*
- *High neck pillar taps*



- *Pillar taps*
- *Choice of design*

Illustrated

S7100 (6973400) (TP1)
Nuastyle 1/2in pillar taps
S7195 (6624400) (TP1)
Nimbus 1/2in pillar taps

Options

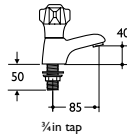
S7200 (6624500) (TP2)
Nimbus 3/4in pillar taps
S7105 (6973500) (TP2)
Nuastyle 3/4in pillar taps

Standards

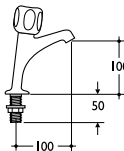
BS 5412: 1996

Special notes

Tap inlets are screwed BSP male



- *High neck pillar taps*
- *Choice of design*



Illustrated

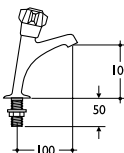
S7115 (6974400) (TP3)
Nuastyle 1/2in inclined high neck pillar taps
S7220 (6649400) (TP3)
Nimbus 1/2in inclined high neck pillar taps

Standards

BS 5412: 1996

Special notes

Inlets screwed 1/2in BSP male



healthcare

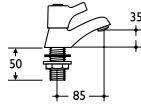
htm64 pillar taps

Fittings for sanitary assemblies conforming to HTM64.

healthcare

HTM64

- *Millenia lever taps*
- *Pillar taps*
- *Spray mixer*



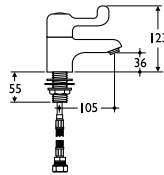
- *Quarter turn*
- *Ceramic disc*

Illustrated

S7004 (61144LV) (TP5)
Millenia 1/2in quarter turn pillar taps with ceramic discs

Special notes

Inlets screwed 1/2in BSP male



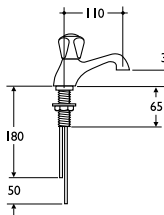
- *Lever action*
- *Spray mixer*

Illustrated

S7445 (8029Y00) (TP6) 1/2in lever action spray mixer tap with flexible tails and volume controls
S7440 (6409200) (TP6) Spraymixa 1/2in mixer tap with soft copper inlet tails

Special notes

Suitable for balanced supplies only



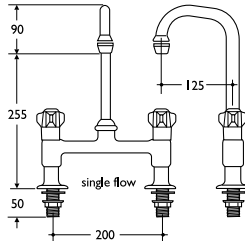
healthcare
htm64 mixers

TP7 and TP8 washbasin pillar mixers conforming to HTM64.

healthcare

HTM64

- *Nimbus pillar mixer*
- *Piccolo washbasin mixer*
- *Hospital brassware*



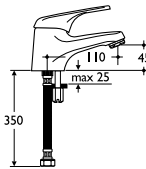
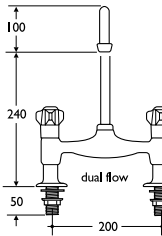
- *Nimbus pillar mixer*
- *Anti splash nozzle*

Illustrated

S7975 (6635400) (TP7) Nimbus 1/2in pillar mixer, single flow, screwdown headwork and swivel anti splash nozzle

Options

S7977 (6636400) twin flow mixer with anti splash nozzle



- *Piccolo washbasin mixer*
- *Single lever operation*

Illustrated

B1990 (6312W00) (TP8) Piccolo 2 single lever washbasin mixer, no waste

Special notes

Minimum inlet pressures 1.0 bar



healthcare

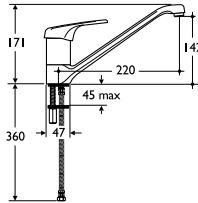
htm64 mixers and bib taps

Sink supply fittings, TP9, TB2 and TB3 conforming to HTM64.

healthcare

HTM64

- *Piccolo monoblock filler*
- *Nimbus bib taps*
- *Chrome plated*



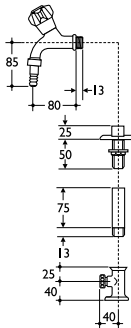
- *Monoblock sink and washbasin filler*
- *Twin flow*

Illustrated

B1988 (6313X00) (TP9)
Piccolo 2 single lever monoblock sink filler, single flow

Special notes

Minimum inlet pressures
1.0 bar



- *Bib taps*
- *HTM64 TB2 and TB3*

Illustrated

S7207 (661041T) (TB2)
Nimbus 1/2 inch inclined bib taps with hose union, (pair) with dual indices
S7206 (661041G) (TB3)
Nimbus 1/2 inch inclined bib taps, anti splash outlet with dual indices

S8336 (81470PR) 1/2 inch wall mounts for concealed plumbing
S8331 (81460PR) 1/2 inch wall mounts for exposed plumbing
S8346 (8174BPR) 1/2 inch tap extensions, 75mm



healthcare

htm64 wall mounted mixers

TB4 and TB5 supply fittings to HTM64.

- Washbasin mixers
- Nimbus wall mounted
- Millenia concealed

healthcare

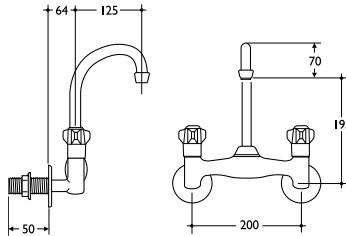
HTM64



- Wall mounted mixer
- Anti splash nozzle

Illustrated

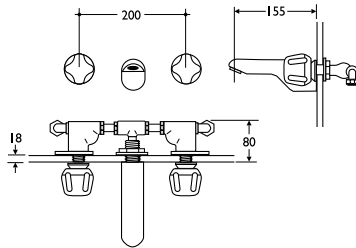
S8286 (809247P) (TB4)
Nimbus 1/2in wall mixer,
twin flow and swivel
anti splash nozzle



- Concealed washbasin mixer
- For balanced supplies

Illustrated

S7315 (61104XX) (TB5)
Millenia 1/2in concealed
washbasin mixer with
anti splash outlet,
body only
S8030 (63764XXCP)
metal handles



Special notes

Suitable for balanced
supplies only.
Inlets with capnuts and
cones for 15mm copper



healthcare

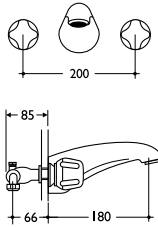
htm64 wall mounted mixers

TB6 and TB7 supply fittings to HTM64.

healthcare

HTM64

- Wall mounted
- Concealed mixers
- For balanced supplies



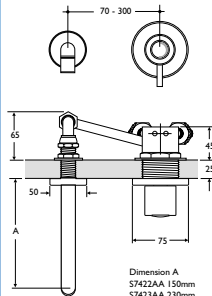
- Bath mixer
- Wall mounted

Illustrated

S7615 (61394XX) (TB6) Millenia 1/2in concealed wall mounted bath mixer, body only
S8030 (63764XX) metal handles

Special notes

Suitable for balanced supplies only.
 Inlets with capnuts and cones for 22mm copper



- Single control
- For balanced supplies

Illustrated

S7422AA (TB7) Contour 2 single control concealed washbasin mixer, quarter turn ceramic disc operation, 150mm projection spout with alternative aerator outlet or antispash insert. Chrome plated.

Options

S7423AA (TB7) Contour 2 mixer as illustrated but with 230mm projection spout. Chrome plated

Special notes

This fitting is designed to suit balanced supplies with a minimum inlet pressure of 0.3 bar
 Inlets with flexible tails for 15mm copper

Weight (KG)

2.5kg

Dimension A
 S7422AA 150mm
 S7423AA 230mm
 55mm diam hole for mixer
 25mm diam hole for spout



healthcare

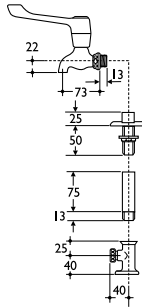
htm64 wall mounted fittings

Wall mounted supply fittings, TBH1 and TBH2, conforming to HTM64.

- Lever action
- Taps and mixers
- Markwik range

healthcare

HTM64



- Lever action
- Bib taps

Illustrated

S8270 (806041D)
(TBH1) Markwik 1/2in lever action bib taps with 15cm levers
S8336 (81470PR)
1/2in wall mounts for concealed plumbing
S8346 (8174BPR) 1/2in extensions, 75mm long

Options

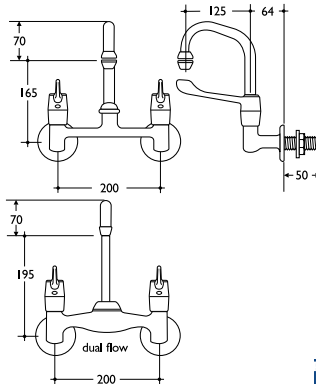
S8274 (806042A)
(TBH1) with thimble spray nozzle (cold)
S8331 (81460PR)
1/2in wall mounts for exposed plumbing

Special notes

Inlets screwed 1/2in BSP male



- Lever action
- Wall mounted mixer



Illustrated

S8210 (800247V)
(TBH2) Markwik 1/2in wall mounted single flow mixer with 15cm levers and swivel anti splash nozzle

Options

S8285 (809247V) twin flow pattern

Special notes

Inlets screwed 1/2in BSP male



healthcare

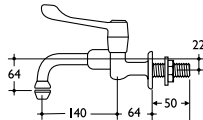
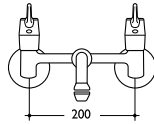
htm64 wall mounted fittings

Wall mounted supply fittings, THBH3 and TBH6, conforming to HTM64.

healthcare

HTM64

- Lever action taps
- Wall mounted
- Proximity sensor



- Wall mounted mixer
- Optional thimble spray

Illustrated

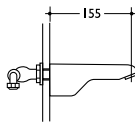
S8230 (801147V)
(TBH3) Markwik 1/2in wall mounted mixer with 15cm levers and horizontal anti splash nozzle

Options

S8231 (801147X)
(TBH3) with thimble spray nozzle

Special notes

Inlets screwed 1/2in BSP male



- Proximity sensor
- Programmable for up to 10 units

Illustrated

S8102 (7883402)
(TBH6) Sensorflow panel mounted proximity sensor nozzle
S8100 (7963002)
programmable control unit for up to 10 outlets

Options

Sensorflow Solo - a full range of fittings with individual control boxes are available. For full details see contract brassware section



healthcare

htm64 shower fittings

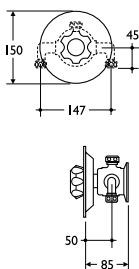
MM1 and MM2 shower mixers.

A single control regulates both flow and temperature control via cold-tepid-hot sequence as a safety aspect.

healthcare

HTM64

- Thermostatic mixer
- Manual mixer
- Flexible hose kits
- Fixed shower arm and head



● Flexible hose kit

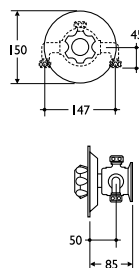
Illustrated

S7840 (66824AH)
(MM1) Supamix 1/2in concealed manual mixer valve

S9401 (78924J0)
flexible hose, white handspray, adjustable bracket and wall outlet screwed 1/2in BSP male

Options

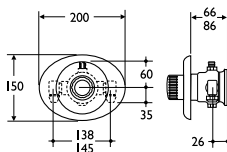
S9396 (78914J0)
handspray, flexible hose and rail with wall outlet for use with concealed shower valve



● Shower arm and head

Illustrated

S7840 (66824AH) (MM2) Supamix 1/2in concealed manual mixer with **S9329 (66914K4)** 1/2in angled shower arm, 10cm projection with **S9320 (6688400)** Triton 1/2in swivel mounted shower head



● Thermostatic mixer

Illustrated

S7805 (69914AG) (TM1) Starlite 1/2in concealed thermostatic mixer valve

S9401 (78924J0)
flexible hose, white handspray, adjustable bracket and wall outlet screwed 1/2in BSP male

Options

S9396 (78914J0)
handspray, flexible hose and rail with wall outlet for use with concealed shower valve

Special notes

Valve conforms to NHS TMV3 approved scheme



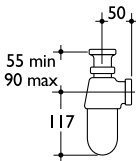
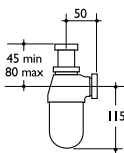
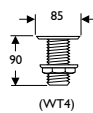
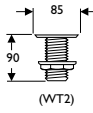
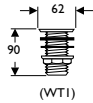
healthcare

htm64 wastes and traps

Wastes and traps for HTM64 sanitary assemblies.

healthcare

HTM64



- Wastes
- HTM64 refs: WT1 to WT4
- Bottle traps
- HTM64 refs: TR1/M, TR2/M

- Strainer wastes
- Bead chain wastes

Illustrated

S8720 (70027N9) (WT1) 1 1/4in strainer waste with unslotted tail
 S8715 (70017N6) (WT3) 1 1/4in bead chain waste and plug with unslotted tail, screw stay
 S8768 (70668M0) (WT4) 1 1/2in waste, chain and plug with unslotted tail, screw stay

Options

S8726 (70038P3) (WT2) 1 1/2in strainer waste with unslotted tail
 S8766 (70668M8) (WT4) 1 1/2in waste, chain and plug with slotted tail, screw stay
 S8767 (70668N7) (WT4) 1 1/2in waste, short unslotted tail for stainless steel sinks



- Bottle traps
- Chrome plated

Illustrated

S8900 (70197Q4) (TR1/M) 1 1/4in chrome plated bottle trap with 75mm seal, outlet screwed 1 1/4in BSP male with compression nut and ring

Options

S8905 (70198Q4) (TR2/M) 1 1/2in chrome plated bottle trap with 75mm seal, outlet screwed 1 1/2in BSP male with compression nut and ring



healthcare

htm64 wastes and traps

Traps for HTM64 sanitary assemblies.



- *Bottle traps*
- *HTM64 refs: TR1/P, TR2/P*
- *Resealing bottle traps*
- *HTM64 refs: TRR1/P, TRR2/P*

- *Bottle traps*
- *White plastic*

Illustrated

S8910 (70237Q4)
(TR1/P) 1 1/4in White plastic bottle trap with 75mm seal

Options

S8915 (70238Q4)
(TR2/P) 1 1/2in self-colour plastic bottle trap with 75mm seal

Special notes

Multi-purpose outlet suitable for plastic and BS copper pipe



- *Resealing bottle traps*
- *self-colour plastic*

Illustrated

S8920 (7360700)
(TRR1/P) 1 1/2in White plastic resealing bottle trap with 75mm seal

Options

S8925 (7360800)
(TRR2/P) 1 1/2in White plastic resealing bottle trap with 75mm seal

Special notes

Multi-purpose outlet suitable for plastic and BS copper pipe



healthcare

cleaning and quality control

General notes on maintenance, cleaning and quality control of HTM64 listed equipment.

Recommended procedures for the care of appliances.

- Maintenance
- Quality control
- Labelling
- Hard water areas

healthcare

HTM64

Maintenance

Recommended procedures for the care of appliances and associated fittings.

Vitreous china and fireclay

Clean regularly with Armiclens, warm soapy water or mild detergent. A little disinfectant may be added. Dry with a soft cloth. Prompt and thorough cleaning immediately after use prevents build up of insoluble lime salts in hard water areas and 'tide mark' deposits. Stubborn stains may be removed by use of a mild scouring powder.

WC pans should be cleaned regularly with a British Bathroom Council approved cleanser. Use a soft brush and avoid any metal parts coming into contact with the glaze. Always clean under the rim. Flush after cleaning to remove any deposits of cleanser.

Urinal bowls should be cleaned regularly with an approved cleanser. Avoid damage to the waste and trap. Rinse thoroughly with clean water. Do not allow deposits of cleanser to remain in the sump of the trap. Ensure that frequency of flush is suited to the conditions and requirements of the Water Regulations.

Baths

When filling, run a little cold water before turning on the hot tap. Bath salts should be added during filling and thoroughly dissolved quickly. Clean immediately after use with warm soapy water or mild detergent and dry with a soft cloth. Prompt and thorough cleaning will prevent build up of insoluble lime salts in hard water areas and 'tide mark' deposits.

Stubborn stains on cast iron baths may be removed by a mild scouring powder. Minor scratches on acrylic baths can be rubbed out with mild abrasive and the surface brilliance restored by gently polishing with metal polish.

Do not allow burning cigarettes or matches to be placed on the surface. Do not allow paint strippers, spirits, dry cleaning agents, WC cleaners or bleaches to come into contact with the material. Chemicals used in photography should never be put in a bath.

Chrome plated fittings

Clean regularly with a soft cloth and warm soapy water or mild detergent, rinse, dry and polish with a clean soft cloth. Do not use household cleaners containing abrasives or chemicals. Dripping taps will waste water and may cause stains – it is a simple matter to renew the washer. Faulty equipment should be repaired or replaced immediately.

WC seats

Clean daily with warm soapy water (a little disinfectant may be added) rinse and dry with a soft cloth. Do not allow WC cleaners or strong bleaches to come into contact with plastic seats. Always ensure that seat & cover are raised when cleaning WC bowls.

Quality control

Trained personnel scrutinise all stages of manufacture including checking of raw materials and final inspection of finished products. WCs are checked for flushing performance using recommended heights.

Vitreous china and fireclay

All pieces are supplied in individually labelled shrink wrapped transparent plastic sleeves. Ware is usually marked on underside with identification number and/or name.

Acrylic baths

These are usually nested together, the face area totally protected by a clear PVC film, with additional cardboard end and corner protectors. Small fittings are packed in plastic bags and tacked to the baseboard together with assembly instructions. Identification number and/or name are marked on the underside. Panels are packed separately in transparent plastic sleeves.

Labelling

Fittings are despatched in cartons in individual sets, with contents labelled on the outside and WC seats in labelled cartons or wrappers. Small fittings are in transparent plastic bags for easy identification. Other items such as support brackets are delivered in bundles and suitably labelled.

Hard water areas

Hard water deposits are usually severe on some thermostatic valves which use close tolerances between piston and barrel, but the valves are specially designed to minimise the effects of aggressive waters, as below:

- a) Liming-up is eliminated by the use of rubber O ring seals which resist deposition of lime.
- b) Dezincification is prevented by the careful selection of materials. All internal components are in gunmetal, brass or stainless steel.
- c) Thermostatic expansion assemblies are encased in copper. These units have been tested to over 100,000 operations, equivalent to a working life of 70 years.

Provided they are in constant use, screwdown and quarter turn type mixers and taps are less likely to be affected as the positive operation of the spindles makes it difficult for deposits to build up and normal re-washing should ensure satisfactory performance.

healthcare

general healthcare



healthcare

general healthcare

healthcare

vestale washbasin

Wall mounted handrinse washbasin unit in fine fireclay with exposed or concealed trap connection.

Integral electronic spray tap and strainer waste.

Electronic soap and paper towel dispenser available.

- Fine fireclay
- Exposed or concealed trap
- Soap and towel dispenser
- Commercial or healthcare use



Illustrated

P9001 Vestale wall mounted handrinse washbasin, electronically operated thermostatic spray mixer, strainer waste, concealed outlet, bottle trap with 75mm seal and wall hanger
P3015 electronically operated, wall mounted soap and paper towel dispenser

Material
Fireclay

Weight
Washbasin 35.0kg
Dispenser 5.0kg

Colours
Available in White only

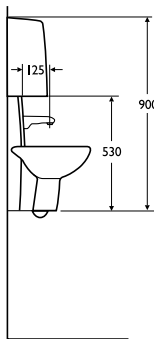
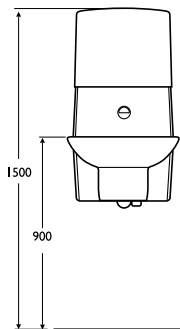
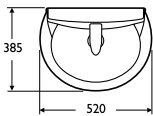
Options
P9002 Vestale washbasin with exposed outlet connection to bottle trap

Special notes

Supplied complete with wall templates showing inlet and outlet positions.
Suitable for use with Kimberly-Clark paper towels and soap

healthcare

general healthcare



healthcare
firth scrub-up trough

Surgeons' scrub-up troughs in stainless steel available in 3 sizes, 80cm, 160cm and 240cm for 1, 2 or 3 persons.

Other sizes are available to special order up to a maximum length of 305cm.

- Surgeons' scrub-up trough
- Stainless steel
- Special lengths available

healthcare

general healthcare



Illustrated

S2860 (54163RC) 240cm Firth surgeons' scrub-up trough in stainless steel with right hand outlet, strainer waste & trap cover including brackets
S8231 (801147X) Markwik 1/2in wall mounted mixer, lever operation, horizontal spray outlet and concealed supplies
S8925 (7360800) 1 1/2in plastics resealing bottle trap with removable sump, 75mm seal

Material

Stainless steel

Weight

80cm trough 23.0kg
 160cm trough 41.0kg
 240cm trough 67.0kg

Finish

Polished stainless steel

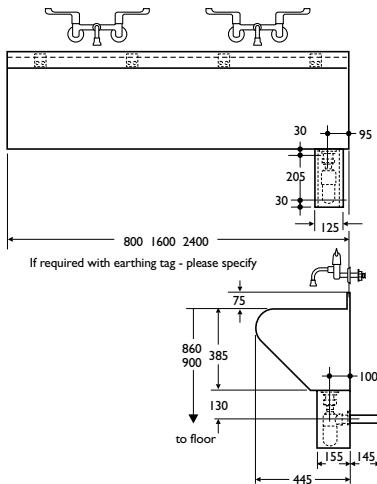
Standards

Stainless steel conforms to BS 1449: Part 2: 1983

Options

S2851 (54161LW) 80cm with left hand outlet and strainer waste
S2853 (54161RW) 80cm with right hand outlet and strainer waste
S2850 (54161LC) 80cm with left hand outlet, strainer waste & trap cover
S2852 (54161RC) 80cm with right hand outlet, strainer waste & trap cover
S2855 (54162LW) 160cm

with left hand outlet and strainer waste
S2857 (54162RW) 160cm with right hand outlet and strainer waste
S2854 (54162LC) 160cm with left hand outlet, strainer waste & trap cover
S2856 (54162RC) 160cm with right hand outlet, strainer waste & trap cover
S2859 (54163LW) 240cm with left hand outlet and strainer waste
S2861 (54163RW) 240cm with right hand outlet and strainer waste
S2858 (54163LC) 240cm with left hand outlet, strainer waste & trap cover
S8102 (7883402) Sensorflow panel mounted proximity spout
S8100 (7963002) programmable control unit for up to 10 outlets
S8270 (80604ID) Markwik lever action bib taps
S8336 (81470PR) 1/2in wall mounts for concealed supplies (pair)



sinks janitorial unit

Stainless steel janitorial unit incorporating cleaners' sink and handrinse basin.

- *Stainless steel*
- *Supported on legs*

healthcare

general healthcare



Illustrated

S6509MY Janitorial unit in stainless steel 50cm wide x 60cm projection x 90cm high complete with tamper proof concealing panel for basin trap, hinged bucket grating to sink, stainless steel legs with adjustable feet and earthing tag

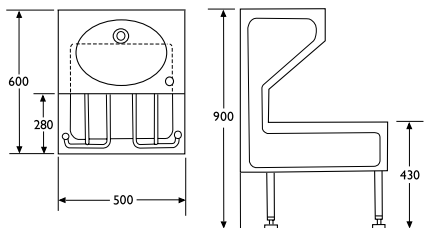
B2809AA Monoblock mixer with swivel nozzle
S8836AA 1¹/₄in waste with swivel plug
S8920 (7360700) 1¹/₄in plastic resealing bottle trap, 75mm seal
S8760 (70658N0) 1¹/₂in unslotted strainer waste
S8925 (7360800) 1¹/₂in plastic resealing bottle trap, 75mm seal

Material

Stainless steel

Special notes

Monoblock mixer is provided with swivel nozzle for use with either handrinse basin or cleaners sink below. Unit is supported on four stainless steel legs with adjustable feet. Holes are provided in back flange to secure to wall.



healthcare

aridian waterless urinal

Vitreous china waterless bowl urinal with exposed outlet and special cartridge.

Saves water, can reduce maintenance costs, is easy to install and requires no cistern or flushpipe.

- Exposed outlet
- Water saving (236,000 litres pa*)
- Cost saving
- Hygienic
- WRAS approved

healthcare

general healthcare



Illustrated

S6190 (26212WS)
Aridian vitreous china waterless bowl urinal, renewable cartridge with outlet adapter and fixing hangers

S6120 (2606000)
vitreous china division with hanger and screw

Material

Vitreous china

Weight

Urinal 10.0kg
Division 8.0kg

Colours

Available in White only

Standards

Vitreous china to BS 3402.
WRAS approval

Options

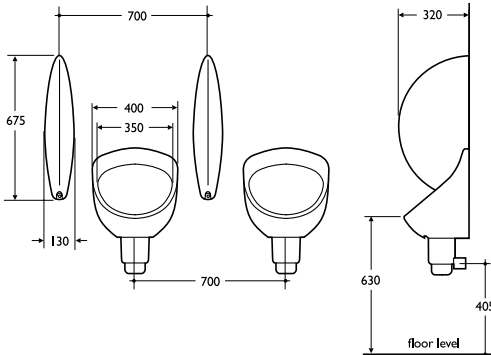
S6192 (26212N5) Aridian waterless bowl urinal exposed outlet and adapter with 50mm O.D. spigot (no cartridge)

Associated products

S6282 (7928100) replacement cartridge
S6283 (7928132) replacement cartridges in boxes of 32

Special notes

Outlet plain 41mm OD tube to push connect to polypropylene wastepipe to BS 5254.
Cartridges last for approximately 7,000 uses.
Installers must ensure that urinals are connected to wastepipe systems which are adequately vented



* Estimated saving per bowl, per year based on conventional urinal flushing of 4.5 litres, 6 times per hour, 24 hours per day, 365 days per year



healthcare

aridian waterless urinal

Vitreous china waterless bowl urinal with concealed outlet and special cartridge.

Saves water, can reduce maintenance costs, is easy to install and requires no cistern or flushpipe.

- Concealed outlet
- Anti vandal concealed fixing
- Water saving (236,000 litres pa*)
- Cost saving
- WRAS approved

healthcare

general healthcare



Illustrated

S6195 (26202WS)
Aridian vitreous china waterless bowl urinal renewable cartridge with outlet adapter and fixing hangers and toggle bolts
S6120 (2606000)
vitreous china division with hanger and screw

Material

Vitreous china

Weight

Urinal 14.0kg
Division 9.0kg

Colours

Available in White only

Standards

Vitreous china to BS 3402.
WRAS approval

Options

S6194 (26202N5) Aridian waterless bowl urinal concealed outlet and adapter with 50mm O.D. spigot (no cartridge)

Associated products

S6282 (7928100)
replacement cartridge
S6283 (7928132)
replacement cartridges in boxes of 32

Special notes

Outlet plain 41mm OD tube to push connect to polypropylene wastepipe to BS 5254.

Cartridges last for approximately 7,000 uses.

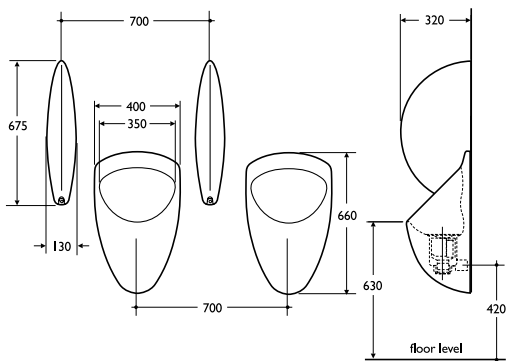
Minimum recommended duct depth 10cm. When fitting on panel the bottom access panel should be a maximum of 20cm in height.

Installers must ensure that urinals are connected to wastepipe systems which are adequately vented



S6282

* Estimated saving per bowl, per year based on conventional urinal flushing of 4.5 litres, 6 times per hour, 24 hours per day, 365 days per year



healthcare
shetland

Front approach assisted bath, 170cm x 70cm, in fully reinforced acrylic.

Shetland assisted bath is offered in 2 heights, 77cm and 63cm, pre-assembled and ready for installation.

Bath hoist illustrated is not included.

- Assisted bath assembly
- Front approach
- Optional tapholes
- Reinforced acrylic
- Two height options

healthcare

general healthcare



Illustrated

S1515 (43132D8)
Shetland assisted bath assembly, height 77cm, no tapholes, complete with wooden plinth, 3 plastics panels, including inspection panel, edging strips, combined chain waste and overflow and necessary connecting pipework
S7615 (61394XX)
concealed wall bath mixer, no handles
S8030 (63764XX)
all metal handles
S8970 (71428Q4)
1 1/2in plastics P trap with 75mm seat and multi-purpose outlet

Options

S1514 (43132D6)
assisted bath assembly, height 77cm, 2 tapholes
S1512 (43131D6)
assisted bath assembly, height 63cm, 2 tapholes
S1513 (43131D8)
assisted bath assembly, height 63cm, no tapholes
S8945 (70188Q4)
1 1/2in plastics S trap with 75mm seal and multi-purpose outlet

Special notes

Bath hoist can be obtained from Arjo Ltd
Tel: 08702-430430

Material

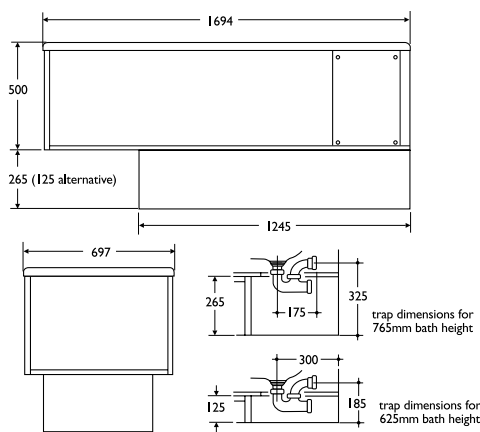
Idealform™ cast acrylic sheet fully reinforced

Weight

77cm high 38.0kg
63cm high 37.0kg

Colours

Available in White only



healthcare
shetland

Side approach assisted bath, 170cm x 70cm, in fully reinforced acrylic.

Shetland assisted bath is 70cm high, suitable for side entry and is supplied pre-assembled and ready for installation.

Bath hoist illustrated is not included in this assembly.

- Assisted bath assembly
- Side approach
- Optional tapholes
- Reinforced acrylic

healthcare

general healthcare



Illustrated

S1517 (43131X9)
Shetland assisted bath assembly, 2 tapholes, complete with wooden plinth, 3 plastics panels, including inspection panel, edging strips, combined chain waste and overflow and necessary connecting pipework
S7200 (6624500)
Nimbus 3/4in pillar taps
S8970 (71428Q4)
1 1/2in plastics P trap with 75mm seal and multi-purpose outlet

Material

Idealform™ cast acrylic sheet fully reinforced

Weight

Bath 38.0kg

Colours

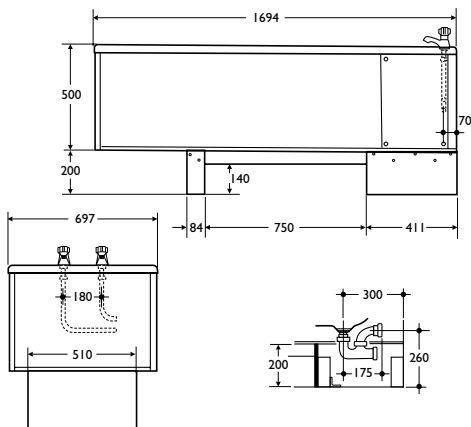
Available in White only

Options

S1516 (43131X0)
assisted bath assembly, no tapholes

Special notes

Bath hoist can be obtained from Arjo Ltd
Tel: 08702-430430



healthcare

derwent plaster sink

Plaster sink unit in fireclay with sediment receiver to prevent plaster from passing into drain.

- Plaster sink unit
- Manufactured in fireclay
- Sediment receiver
- Left or right handed

healthcare

general healthcare



Illustrated

S5805 (3500865) Belfast sink 61cm x 46cm
S8205 (800147V) Markwik 1/2in wall mounted mixer with lever operation, swivel nozzle, anti splash outlet, exposed supplies
S8725 (70038P2) 1/2in strainer waste with 80mm slotted tail
S8955 (703480A) 1/2in plastics vertical waste pipe
S9250 (7930FVE) stainless steel legs with aluminium alloy screw to wall bearers
S5955 (35151F8) Elm receiver 33cm, horizontal side outlet
S9370 (7743000) galvanised tray
S9371 (7745000) stainless steel cover
S5835 (3507100) drainer 61cm x 46cm
S9268 (7930JVE) stainless steel leg with aluminium alloy screw to wall bearer

Material

Fireclay

Weight

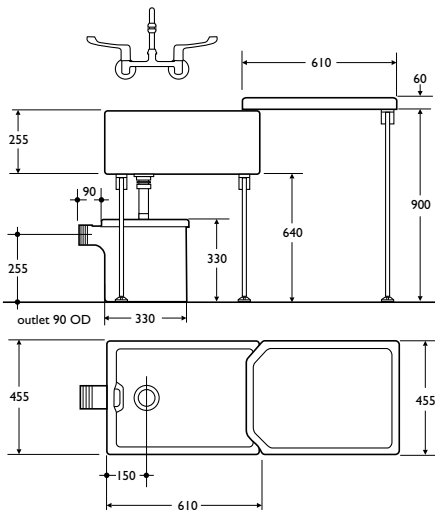
Sink 49.0kg
 Receiver 34.0kg
 Drainer 22.0kg

Colours

Available in White only

Options

S9219 (7931VE0) aluminium alloy build-in brackets
S9220 (7931VE1) aluminium alloy build-in bracket for drainer



healthcare

esk slop hopper

Solid back-to-wall slop hopper in fireclay with top inlet for exposed cisterns.

Available with cover for improved hygiene and appearance.

- Slop hopper
- Manufactured in fireclay
- Optional cover

healthcare

general healthcare



Illustrated

S6540 (35110CP) Esk slop hopper, top inlet with P trap, cover & grating

S9102 (7550BFR)

Domex screws

S7205 (6610400) Nimbus

1/2in inclined bib taps

S8346 (8174BPR)

75mm extensions

S8331 (81460PR)

1/2in wall mounts for exposed plumbing

S3955 (17180AD) Clena

high level cistern,

6 litres for side supply,

Microvalve ballvalve,

syphon, internal

overflow, chain and pull

S4505 (9015B00) Simpla

inlet connection

S4590 (M128600) 9 litre

conversion kit

S4654 (77638A1)

plastics flushpipe

Material

Fireclay

Weight

Hopper 33.0kg

Cistern 19.0kg

Colours

Available in White only

Options

S6542 (35110CS) top inlet hopper with S trap, cover & grating

S6541 (35110GP) top inlet hopper with

P trap, grating, no cover

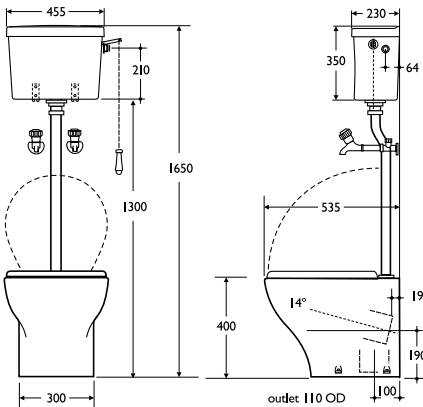
S6543 (35110GS) top inlet hopper with S trap,

grating, no cover

Associated products

S4320 (76520T8)

plastics outlet connector



healthcare

irvine slop hopper

Combined slop hopper and sink suite in fireclay.

Irvine combined slop hopper, sink and drainer incorporates a flexible hose and jet for washing down.

- Combined slop hopper and sink
- Manufactured in fireclay
- Flexible hose and jet
- S trap or P trap

healthcare

general healthcare



Illustrated

- S6560 (3711RGP)** right hand slop hopper with sink, P trap outlet, strainer waste, connecting pipe & hinged bucket grating
- S7205 (6610400)** Nimbus 1/2in inclined bib taps (2 pairs)
- S8346 (81746PR)** 75mm extensions (2 pairs)
- S8331 (81460PR)** 1/2in wall mounts for exposed plumbing (2 pairs)
- S3955 (17180AD)** Clena cistern 6 litre with Freeflo plastics syphon fittings and 1/2in Microvalve HP/LP ballvalve, side supply, internal overflow, chrome plated chain and rubber pull and support brackets
- S4590 (M128600)** 9 litre conversion set
- S4655 (77648A1)** plastics flushpipe, 69cm
- S4505 (9015B00)** Simpla inlet connector

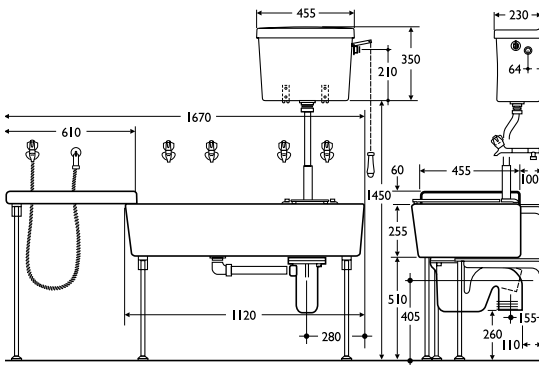
- S9236 (7930CVE)** stainless steel leg with aluminium alloy bearer
- S9235 (7930CTG)** stainless steel leg with aluminium alloy bearer
- S5835 (3507100)** drainer 61cm x 46cm
- S7208 (661043G)** Nimbus 1/2in inclined bib tap, flexible hose, jet and wall hook
- S8330 (8146000)** 1/2in wall mount for exposed plumbing
- S9253 (7930GSH)** stainless steel leg with aluminium alloy bearer

Material
Fireclay

Weight
Sink 125.0kg
Drainer 220.kg
Cistern 20.0kg

Colours
Available in White only

Options
S6561 (3711RGS) right hand slop hopper with sink, S trap outlet, strainer waste, connecting pipe & hinged bucket grating



healthcare

fane sluice sink

Fane bedpan and bottle sluice sink in fireclay is fitted with bottle and bedpan jets with lever valves and flushing apparatus.

Supplies to bottle and bedpan jets must be from a separate tank to avoid risk of contamination.

- Bedpan sink
- Manufactured in fireclay
- Bottle and bedpan jets

healthcare

general healthcare



Illustrated

S6570 (37100JP) Fane bedpan and bottle sink, P trap outlet, fitted bedpan & bottle jets
S3955 (17180AD) Clena cistern 6 litre capacity with Freeflo plastics syphon fittings and 1/2in Microvalve HP/LP ballvalve, side supply, internal overflow, chrome plated chain and rubber pull and support brackets
S4590 (M128600) 9 litre conversion set
S4655 (77648A1) plastics flushpipe 69cm
S4505 (9015B00) Simpla inlet connector
S8310 (81004G2) Markwik weighted lever valve, bedpan
S8311 (81004G5) Markwik weighted lever valve, bottle
S9420 (7980400) stainless steel connecting pipes (2)
S9239 (7930DVE) stainless steel legs with aluminium alloy bearers

S9219 (7931VE0) aluminium alloy build-in brackets

Special notes

Supplies to bottle and bedpan jets must be from a separate tank to avoid any risk of contamination. This tank should have a capacity of at least 160 litres (35 gallons) and a recommended head of 4.25 metres (14 feet). It is acceptable to supply a number of bedpan sinks from the same individual tank of a suitable capacity. Supply should be cold

Material

Fireclay

Weight

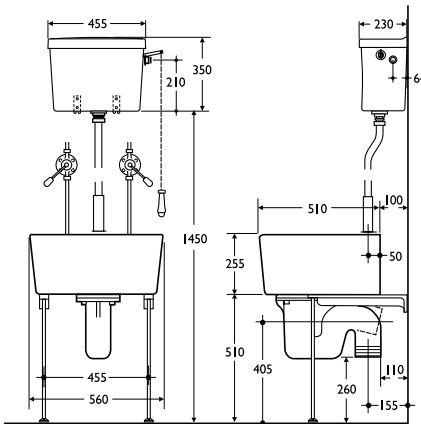
Sink 58.0kg
Cistern 20.0kg

Colours

Available in White only

Options

S6571 (37100JS) Fane bedpan and bottle sink S trap outlet, fitted bedpan & bottle jets



healthcare

welland sluice suite

Welland bedpan and bottle sluice suite in fireclay is fitted with bottle and bedpan jets with lever valves, flushing apparatus, flexible hose and jet for washing down.

Welland is available with bedpan sink on left or right hand sides.

Supplies to bottle and bedpan jets and flexible hose tap must be from a separate tank to avoid risk of contamination.

- Bedpan and bottle sluice suite
- Manufactured in fireclay
- Flexible hose and jet
- Left or right hand arrangement

healthcare

general healthcare



Illustrated

S6577 (3710LJP) bedpan and bottle sink, P trap outlet with left hand connector, fitted bedpan & bottle jets
 S8310 (81004G2) Markwik weighted lever valve, bedpan
 S8311 (81004G5) Markwik weighted lever valve, bottle
 S9420 (7980400) stainless steel connecting pipes (2)
 S9239 (7930DVE) stainless steel legs and aluminium bearers
 S3955 (17180AD) Clena cistern 6 litre capacity with Freeflo plastics syphon fittings with 1/2in Microvalve HP/LP ballvalve, side supply, internal overflow, chrome plated chain rubber pull and support brackets
 S4590 (M128600) 9 litre conversion set
 S4655 (77648A1) plastics flushpipe, 69cm
 S4505 (9015800) Simpla inlet connector
 S5805 (3500865) Belfast sink 61cm x 46cm
 S7205 (6610400) Nimbus 1/2in inclined bib taps
 S8346 (8174BPR) 75mm extensions
 S8331 (81460PR) 1/2in wall mounts for exposed plumbing
 S8725 (70038P2) 1 1/2in slotted strainer waste
 S8981 (81780B1) 1 1/2in plastics connecting pipe (right hand bedpan sink)
 S9248 (7930FTG)

stainless steel legs, aluminium bearers
 S5835 (3507100) drainer 61cm x 46cm
 S7208 (661043G) Nimbus 1/2in inclined bib tap, flexible hose, jet and wall hook
 S8330 (8146000) 1/2in wall mount for exposed plumbing
 S9266 (7930JTG) stainless steel leg, aluminium bearer

Weight

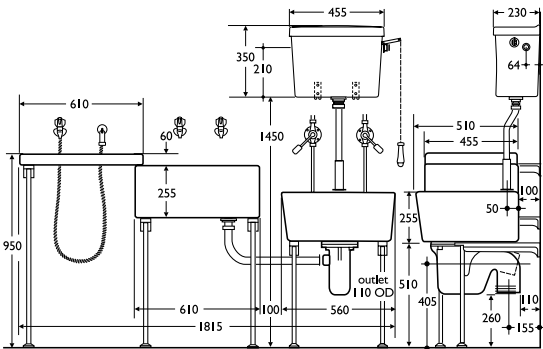
Bedpan sink 58kg
 Belfast sink 49kg
 Drainer 22kg

Colours

Available in White only

Options

S6578 (3710LJS) bedpan and bottle sink S trap outlet with left hand connector fitted bedpan & bottle jets
 S6579 (3710RJP) Sink with P trap outlet with right hand connector & jets
 S6580 (3710RJS) Sink with S trap outlet with right hand connector & jets
 S8980 (81780A0) 1 1/2in plastics connecting pipe (left hand bedpan sink)
 S9219 (7931VE0) aluminium build-in brackets for bedpan sink
 S9215 (7931TG0) aluminium build-in brackets for Belfast sink
 S9216 (7931TG1) aluminium build-in brackets for drainer



healthcare

spey sluice suite

A combined bedpan and bottle sluice suite in fireclay, Spey is fitted with bedpan and bottle jets with lever valves, flushing apparatus and a flexible hose and jet for washing down.

Supplies to bottle and bedpan jets must be from a separate tank to avoid any risk of contamination.

- Bedpan and bottle sluice suite
- Manufactured in fireclay
- Flexible hose and jet

healthcare

general healthcare



Illustrated

S6585 (37010JP) Spey bedpan & bottle sink, P trap, fitted bedpan & bottle jets, strainer waste & connecting pipe
S8310 (81004G2) Markwik weighted lever valve, bedpan
S8311 (81004G5) Markwik weighted lever valve, bottle
S9420 (7980400) stainless steel connecting pipes (2)
S3955 (17180AD) Clena cistern 6 litre capacity with Freeflo plastics syphon fittings and 1/2in Microvalve HP/LP ballvalve, side supply, internal overflow, chrome plated chain and rubber pull and support brackets
S4590 (M128600) 9 litre conversion set

S4655 (77648A1) plastics flushpipe, 69cm
S4505 (9015B00) Simpla inlet connector
S7205 (6610400) Nimbus 1/2in inclined bib taps
S8346 (8174BPR) 75mm extensions
S8331 (81460PR) 1/2in wall mounts for exposed plumbing
S9236 (7930CVE) stainless steel leg with aluminium alloy bearer
S9235 (7930CTG) stainless steel leg with aluminium alloy bearer
S5835 (3507100) drainer, 61cm x 46cm
S7208 (661043G) Nimbus 1/2in inclined bib taps, flexible hose, jet

and wall hook
S8330 (8146000) 1/2in wall mount for exposed plumbing
S9253 (7930GSH) stainless steel leg with aluminium alloy bearer

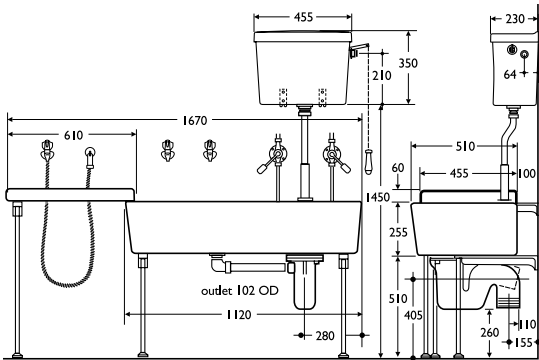
Material
 Fireclay

Weight
 Sink 125.0kg
 Drainer 22.0kg
 Cistern 20.0kg

Colours
 Available in White only

Options
S6586 (37010JS) Bedpan & bottle sink, S trap, fitted bedpan and bottle jets, strainer waste and connecting pipe

Special notes
 Supplies to bottle and bedpan jets and flexible hose trap must be from separate tanks to avoid risk of contamination. This tank should have a capacity of at least 160 litres (35 gallons) and a recommended head of 4.25 metres (14 feet). It is acceptable to supply a number of bedpan sinks from the same individual tank of a suitable capacity. Supply should be cold



healthcare

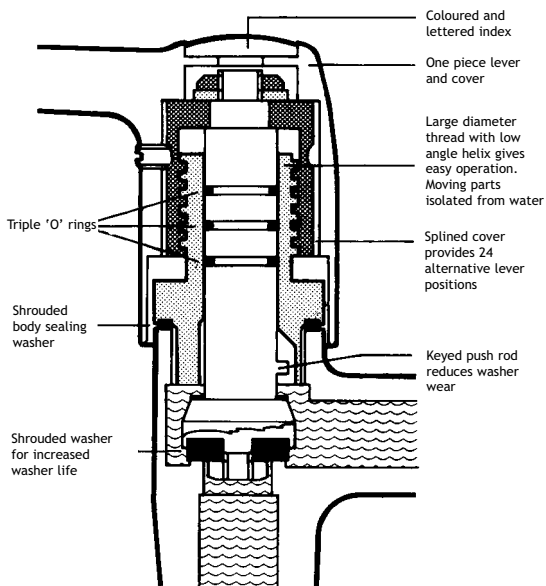
markwik fittings

Markwik lever operated taps have been specially designed to give advantages over conventional lever operated fittings. Particular attention has been paid to hygiene, ease of operation, reliability and minimal maintenance.

- *Easy clean design*
- *Easily operated*
- *Minimal maintenance*
- *Reduced washer wear*

healthcare

general healthcare



Hygiene

Markwik fittings have a one piece lever and cover protecting the mechanism from contamination. The simple external lines inhibit the accumulation of harmful bacteria.

Durability

The use of 'O' rings in preference to the traditional packing gland reduces wear. A keyed push rod instead of a screwed spindle ensures that the valve washer always seats in the same place and the shroud prevents spreading, further reducing washer wear.

Less maintenance

As the operating thread and its components do not come into contact with the water, lubrication lasts longer. When necessary, maintenance can be effected quickly and easily.

Installation

Mixers are coded hot to the left, cold to the right when viewed from the front. Valves are in the closed position when the levers are parallel to the wall. This arrangement may be varied to suit site requirements as the heads are interchangeable and offer 24 positional adjustments at 15° intervals.

Ease of operation

The increased thread diameter and the consequent reduction in the helix angle minimises operating resistance for easy action. Valve design keeps water and lubricated parts separate to ensure durable lubrication and ease of operation.



healthcare
markwik

Markwik 1/2in pillar mixer with 15cm levers and swivel nozzle, available as single or twin flow.

Markwik 1/2in pillar twin flow mixer with 15cm levers and swivel nozzle with anti splash outlet and variable inlet centres.

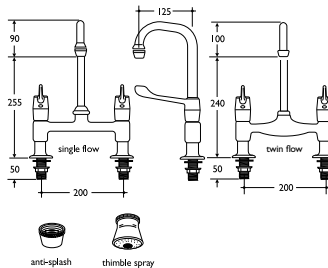
When taps are closed the chrome plated levers are parallel to the wall.

- Pillar mixers
- Lever operated
- For washbasins and sinks
- Single and twin flow
- WRAS approved

- Anti splash nozzle
- Thimble nozzle

healthcare

general healthcare



Illustrated

S8200 (800047VCP)
Markwik 1/2in pillar mixer with 15cm levers single flow pattern and swivel nozzle, anti splash outlet

Options

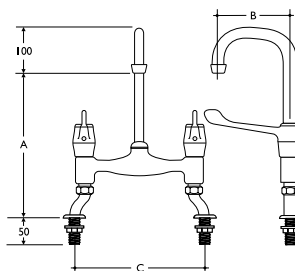
S8201 (800047XCP) thimble spray nozzle
S8275 (809047VCP) twin flow pattern with anti splash nozzle

Associated products

S8325 (8143000CP) single wall hook for standing waste



- Twin flow nozzles
- Variable inlet centres



Illustrated

S7965 (85384LM)
Markwik 1/2in pillar twin flow mixer with 15cm levers and swivel nozzle 20cm projection with anti splash outlet

Options

S7966 (85384NM) With 125mm projection nozzle

Special notes

Variable inlet centres between 165-240mm

A	B	C
232	200	165 - 240 variable centres
282	125	165 - 240 variable centres



healthcare
markwik

Markwik 1/2in wall mounted mixer with 15cm levers and swivel nozzle.

Available single or twin flow, for exposed or concealed plumbing.

When taps are closed the levers are parallel to the wall.

- Wall mounted mixers
- For washbasins and sinks
- Single or twin flow
- Chrome plated
- 15cm levers

healthcare

general healthcare



Illustrated

S8210 (800247VCP)
Markwik 1/2in wall mounted mixer, single flow pattern, 15cm levers and swivel swan-neck nozzle, anti splash outlet, concealed inlets

Options

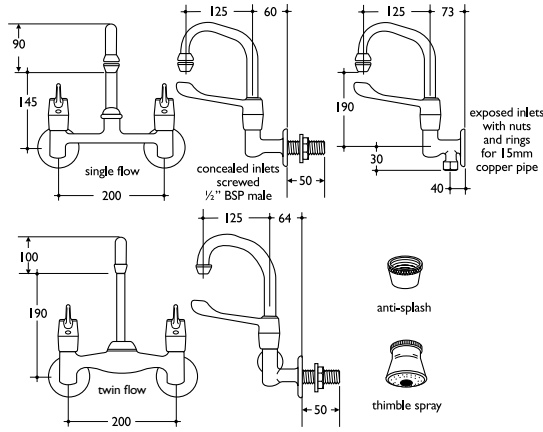
S8211 (800247XCP) concealed inlets, thimble spray nozzle
S8205 (800147VCP) exposed inlets, anti splash nozzle
S8206 (800147XCP) exposed inlets, thimble spray nozzle.

Twin flow patterns

S8285 (809247VCP) concealed inlets, anti splash nozzle
S8280 (809147VCP) exposed inlets, anti splash nozzle

Associated products

S8325 (8143000CP) single wall hook for standing waste



healthcare
markwik

Markwik 1/2in wall mounted mixer with built-in servicing and volume controls for reduction of splashing and as a temporary isolator for servicing. Available as single or twin flow for concealed plumbing.

When taps are closed the levers are parallel to the wall.

- Wall mounted mixers
- For washbasins and sinks
- Single or twin flow
- Chrome plated
- 15cm levers

healthcare

general healthcare



Illustrated

S8215 (800347VCP)
Markwik 1/2in wall mounted mixer with single flow swivel swan-neck nozzle, anti splash outlet, 15cm levers, concealed inlets with built in servicing and volume controls

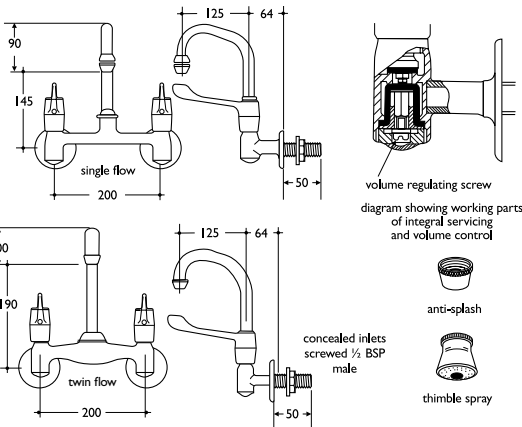
Options

S8216 (800347XCP)
thimble spray nozzle

Twin flow pattern
S8290 (809347VCP)
anti splash nozzle

Associated products

S8325 (8143000CP)
single wall hook for standing waste



healthcare
markwik

Markwik 1/2in wall mounted mixer with 15cm levers and horizontal nozzle for exposed or concealed plumbing. Single or twin flow.

When taps are closed the levers are parallel to the wall.

- Wall mounted mixers
- For washbasins and sinks
- Single or twin flow
- Chrome plated
- 15cm levers



Illustrated

S8230 (801147VCP)
Markwik 1/2in wall mounted mixer with single flow horizontal nozzle, anti splash outlet, 15cm levers, concealed inlets

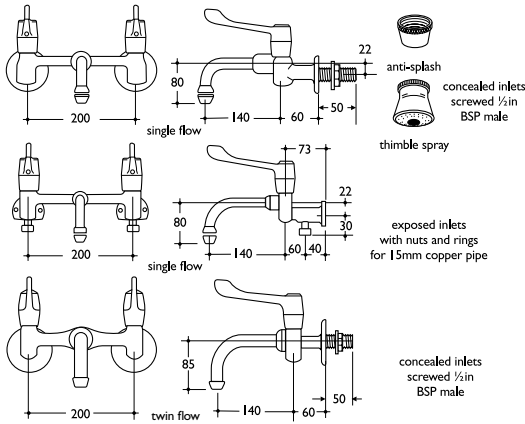
Options

S8231 (801147XCP) concealed inlets, thimble spray nozzle
S8225 (801047VCP) exposed inlets, anti splash nozzle
S8226 (801047XCP) exposed inlets, thimble spray nozzle.

Twin flow pattern
S8289 (808147VCP) concealed inlets, anti splash nozzle

Associated products

S8325 (8143000CP) single wall hook for standing waste



healthcare
general healthcare

healthcare
markwik

Markwik 1/2in wall mounted mixer with built-in servicing and volume controls for reduction of splashing and as a temporary isolator for servicing, for concealed plumbing only.

When taps are closed the levers are parallel to the wall.

- Wall mounted mixers
- For washbasins and sinks
- Chrome plated
- 15cm levers

healthcare

general healthcare



Illustrated

S8235 (801247VCP)
Markwik 1/2in wall mounted mixer with single flow horizontal nozzle, anti splash outlet, 15cm levers, concealed inlets with built-in servicing and volume controls

Options

S8236 (801247XCP)
thimble spray nozzle

Associated products

S8325 (8143000CP)
single wall hook for standing waste

Special notes

Available only for concealed plumbing

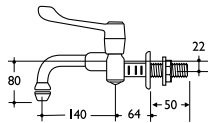
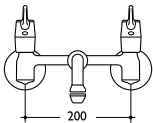
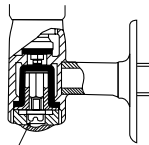


diagram showing working parts of integral servicing and volume control



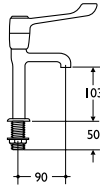
volume regulating screw



healthcare
markwik

Fittings for sluices, washbasins and sinks.

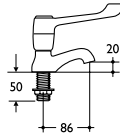
When taps are closed levers are parallel to the wall



- 15cm lever taps
- Chrome plated
- Lever handles

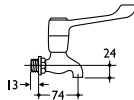
- Taps with 15cm levers
- Chrome plated

Illustrated
S8265 (805141DCP)
Markwik 1/2in high neck pillar taps, inlets screwed 1/2in BSP male



- Taps with 15cm levers
- Chrome plated

Illustrated
S8260 (805041DCP)
Markwik 1/2in pillar taps, raised nose, inlets screwed 1/2in BSP male



- Taps with 15cm levers
- Chrome plated

Illustrated
S8270 (806041DCP)
Markwik 1/2in bib taps, inlets screwed 1/2in BSP male



healthcare

hospital fittings

Fittings for sluices, washbasins and sinks.

healthcare

general healthcare

- Bottle and bedpan valves
- Bottle and bedpan jets
- Chrome plated

- Self closing
- Chrome plated



Illustrated

S8310 (81004G2CP)
Markwik 1/2in weighted lever valve, wall mounted for exposed plumbing with disc marked "BEDPAN". Inlet and outlet supplied with compression nuts and rings for 15mm pipe

Options

S8311 (81004G5CP)
with disc marked "BOTTLE"

Special notes

Please specify left or right hand lever



- Spray mixer tap
- Chrome plated



Illustrated

S8340 (8149000CP)
bedpan jet, inlet screwed 1/2in BSP male
S8341 (8150000CP)
bottle jet, inlet screwed 1/2in BSP male
S7445 (8029Y00CP)
lever action Spraymixa with volume controls, inlets 10mm flexible tubes, suitable for balanced supplies only



healthcare
fittings

For washbasins and sinks, inlets
screwed 1/2in BSP male.

- Chrome plated
- Nuastyle taps
- Nimbus taps

healthcare

general healthcare



S7100



S7195

- Pillar taps

Illustrated

S7100 (6973400CP)

Nuastyle 2 1/2in pillar

taps with raised nose

S7195 (6624400CP)

Nimbus 1/2in pillar taps

with raised nose

S7220 (6649400CP)

Nimbus 1/2in inclined

high neck pillar taps



S7720

Special notes

Inlets screwed 1/2in
BSP male



S7208



S7205

- Nimbus inclined bib taps

- Chrome plated

Illustrated

S7208 (661043GCP)

Nimbus 1/2in inclined

bib tap, flexible hose,

jet and wall hook

S7205 (6610400CP)

Nimbus 1/2in inclined

bib taps

S8330 (8146000CP)

1/2in wall mount for

exposed plumbing

S8335 (8147000CP)

1/2in wall mount for

concealed plumbing

S8345 (8174B00CP) 1/2in

extension, 75mm long



S8330



S8335



S8345



healthcare wastes and traps

Chrome plated wastes and traps for washbasins and sinks.

healthcare

general healthcare

- For washbasins and sinks
- Strainer wastes
- Multi-purpose outlets



S8720



S8320



S8715



S8320

- Wastes
- Chrome plated

Illustrated

S8320 (814179QCP)
1 1/4in waste with loose lift out grid and 12cm stand tube overflow
S8715 (70017N6CP)
1 1/4in bead chain waste and plug with 80mm unslotted tail, screw stay
S8720 (70027N9CP)
1 1/4in strainer waste with 80mm unslotted tail

Options

S8726 (70038P3CP)
1 1/2in strainer waste with 80mm unslotted tail
S8725 (70038P2CP)
1 1/2in strainer waste with 80mm slotted tail

Special notes

All outlets screwed BSP male

Finish

Chrome plated only



S8920
S8925



S8975
S8977



S8976
S8978

- Traps
- Multi-purpose outlets

Illustrated

S8920 (7360700SC)
1 1/4in plastics resealing bottle trap with removable sump, 75mm seal, multi-purpose outlet
S8975 (7356700SC)
1 1/4in plastics extension to wall and wall flange, straight multi-purpose outlet
S8977 (7356800SC)
1 1/2in plastics extension to wall and wall flange, straight multi-purpose outlet

S8925 (7360800SC)
1 1/2in plastics resealing bottle trap with removable sump, 75mm seal, multi-purpose outlet
S8976 (7357700SC)
as S8975 but with bent multi-purpose outlet
S8978 (7357800SC)
as above but with bent multi-purpose outlet



healthcare

tmv3 thermo valves

Thermostatic mixing valves conforming to Type 3 WRAS approved Thermostatic Mixing Valves for Healthcare Premises to NHS D08 (TMV3).

The Health Service Management Guidance notes on the prevention and control of Legionellae states "Hoses used with sanitary equipment should be provided with quick release connector fittings to permit their removal for draining."

- Thermostatic valves
- TMV3 approved
- Risk of scalding eliminated
- Quick release coupling

healthcare

general healthcare



S7805



S7815



S6857



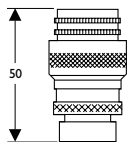
S9401



S9390



S7735AA



Illustrated

S7805 (69914AG)
Starlite 1/2in concealed thermostatic mixer valve with angle pattern non-return valves and wall plate

S9401 (78924J0)
flexible hose, white handspray, adjustable bracket and wall outlet

Alternatives

S7815 (69934AG)
Nuastyle 1/2in concealed thermostatic mixer valve

S6857 (80444AG)
lever operated 1/2in concealed thermostatic mixer valve

S9390 (7873400CP) 1/2in quick release coupling set, chrome plated

S7735AA (6134500)
Millenia pillar mounted thermostatic bath/shower mixer. 3/4in inlets at 180mm centres. Outlet 1/2in BSP male 15mm copper compression adapter

S9400AA (7892400)
Armaglide shower handset, hose and wall bracket

Options

S9380NU (7809500)
Flexible inlet connector with integral isolating valve

Special notes

Quick release coupling designed for the easy removal of flexible hoses for disinfection purposes. The built-in swivel coupler also increases the life of the hose.



TMV Thermostatic Mixing Valve Scheme approved
Meeting the requirements of the NHS Model Engineering Specification - D08 for Type 3 valves



healthcare

general healthcare