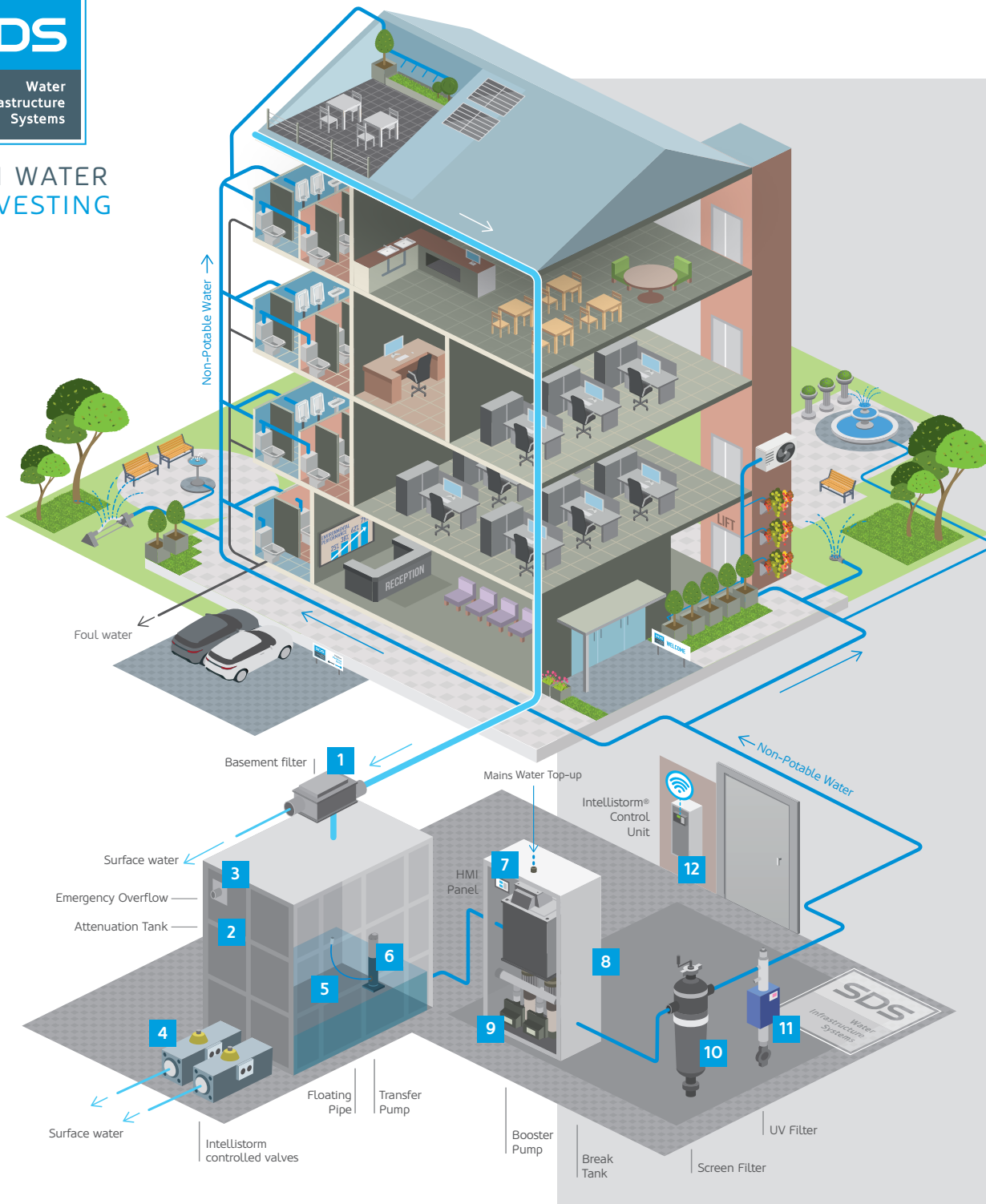


# RAIN WATER HARVESTING



## SDS RWH SYSTEM ACTIVE

- 1 BASEMENT FILTER** - Removes leaves and other large pieces of debris from the rainwater being collected.
- 2 ATTENUATION TANK** - Captured water is held in a tank, either under- or above- ground, sized in accordance with latest standards.
- 3 EMERGENCY OVERFLOW** - Provides an additional failsafe in case rainfall volume exceeds water processing capacity.
- 4 INTELLISTORM® CONTROLLED VALVES** - Comprise butterfly valves and actuators which are controlled by the Intellistorm® unit to release water to the drain.
- 5 FLOATING PIPE** - Floating collection pipe connects with the pump to collect the cleanest water from just below the surface.
- 6 TRANSFER PUMP** - In underground, non-gravity fed, systems a pump delivers the water for processing or to a break tank.
- 7 HMI PANEL** - Provides information on system operating status and performance.
- 8 BREAK TANK** - Holds a buffer supply of rainwater for the booster set and provides access to mains-supplied water in case of shortfall in availability of recycled water.
- 9 BOOSTER PUMP** - Twin duty / standby pumps typically specified for maximum demand and usually variable speed to meet different demand situations.
- 10 SCREEN FILTER** - Sediment filters ensure all larger particles are removed from the water before it enters the UV filtration unit.
- 11 UV FILTER** - UV rays kill any microorganisms that may be in the water.
- 12 INTELLISTORM® CONTROL UNIT** - Processes forecast rainfall data, calculates incoming stormwater volume, and monitors and controls tank levels.