



**Sandtoft** 

## Village

|            |  |   |
|------------|--|---|
| Type       |  | Plain Tile with cross camber and weathered appearance |
| Size       |  | 265 mm x 165 mm                                       |
| Material   |  | Natural Alluvial Clay                                 |
| Durability |  | Guaranteed for 60 years                               |



The **Village** is a natural clay plain tile with varied colour and texture that creates the appearance of an aged roof from new. Its double cambered design adds further character, providing a rustic look that will blend into its surroundings. Like all clay tiles its distinctive colour will never fade but slowly mature over many years.

The **Village** is formed from natural alluvial clay which, of all the clays found in the UK, is the easiest to cut and shape on-site. This makes the **Village** more versatile, especially for complex roof designs, and in many cases quicker to install.



The  
Art of  
Clay

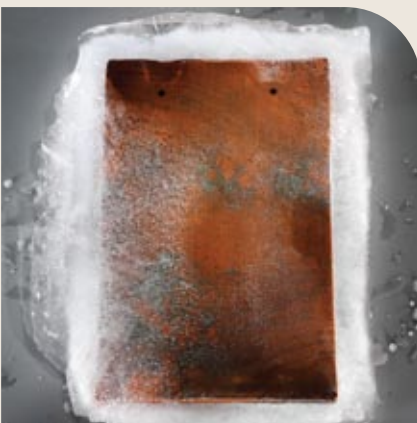
# Made From the Finest Alluvial Clay

Each tile is made with finest quality alluvial clay from the river Humber. Sandtoft has been working with this premium quality natural clay for over a hundred years, producing high quality roof tiles in rich colours that have long been recognised as adding value to the properties they adorn.



Our raw clay is carefully prepared and left to sour before being formed and pressed in a factory that is powered by 100% green electricity. After pressing, each tile is given its unique weathered appearance using natural oxides and minerals, before moving into dryers which reuse heat recovered from the kilns. To complete the process, the tiles are fired in a continuous tunnel kiln to create products that are highly durable in a rich weathered colour that will never fade.

With over 100 years' experience manufacturing clay tiles for the UK climate, Sandtoft is able to offer a 60 year durability guarantee for the **Village**. Like all Sandtoft clay tiles it is completely frost resistant and routinely tested to four times the current UK standard for frost.



Roof  
Design

# Added character and flexibility

One of the benefits of the **Village** is the ease and speed with which it can be adapted on site for details such as hips, abutments and vertical work. This valuable property is unique to the type of alluvial clay used by Sandtoft and does not compromise on durability.



Colour: Reclaimed

Tiles and fittings can be cut swiftly with further time savings achieved through reduced wear on cutting apparatus. Cut pieces can also be easily drilled on site for secure fixing. On more complex roof designs these time saving properties can bring tangible benefits by reducing completion times and installation costs.

## Curved roofs, eyebrows and other features

The **Village** plain tile lends itself perfectly to roofs that are a little different. Its small scale and double camber are ideal for creating distinctive roof designs or providing solutions for complex renovations. From turrets and conical roofs to the sweeping curves of an eyebrow feature, the **Village** offers real design flexibility combined with striking aesthetics.

## Perfect Partners:

**Village** has been carefully crafted to complement **Arcadia**, a traditional clay pantile which replicates the charm and character of aged pantiles. With the same colour and textured finish, **Village** and **Arcadia** are perfect partners.

## Vertical Tiling

The versatility of the **Village** also extends to vertical tiling work for which it is ideally suited. Originally used to provide a lightweight means of waterproofing the upper floors of timber framed buildings, vertical tiling is now becoming increasingly specified as a cost effective yet highly decorative cladding solution. The **Village** comes with a range of internal and external angles etc

## Dry roofing compatible

The **Village** range forms a complete roofing system that is fully dry roofing compatible. See pages 8 and 9.



Arcadia pantile in Reclaimed

Technical  
Data



## Village

### Technical Data

Minimum Roof Pitch  
 Headlap (minimum)  
 Batten spacing at max. gauge  
 Size of tile  
 Covering capacity at max. gauge  
 Cover width  
 Profile depth  
 Hanging length  
 Weight as laid  
 Weight per 1000  
 Weight per tile  
 Weight per pallet  
 (including pallet/packaging)  
 Quantity per pallet  
 Battens per m<sup>2</sup>  
 Batten size -  
 Up to 450 mm rafter centres  
 Up to 600 mm rafter centres  
 Nail size/type for tiles

### Roof

35°  
 65 mm  
 100 mm  
 265 x 165 mm  
 60.0 tiles per m<sup>2</sup>  
 165 mm  
 13 mm  
 245 mm  
 69.0 kg per m<sup>2</sup>  
 1.1 tonnes  
 1.1 kg  
 0.6 tonnes  
 520  
 10 m  
 38 x 25 mm  
 38 x 25 mm  
 38 x 3.35 mm aluminium clout head

### Vertical

75°  
 38 mm  
 114 mm  
 265 x 165 mm  
 53.0 tiles per m<sup>2</sup>  
 165 mm  
 13 mm  
 245 mm  
 61.0 kg per m<sup>2</sup>  
 1.1 tonnes  
 1.1 kg  
 0.6 tonnes  
 520  
 8.7 m

Note: Unless otherwise stated, data is based on tiles laid at minimum headlap



## Village achieves a BRE Green Guide rating of 'A'

Colour: Reclaimed

### Classification

|          |   |
|----------|---|
| Type     | plain tile with cross camber and weathered appearance |
| Material | natural alluvial clay                                 |
| Style    | small format  |
| Fixing   | double lap, cross bond                                |

### Guarantees

|                      |                    |
|----------------------|--------------------|
| Durability guarantee | 60 years           |
| Roof SPEC guarantee  | 20 years (See P11) |

### Environment

Manufactured using 100% green electricity, helping to achieve a reduction of our UK clay products' carbon footprint by 40% since 2001. Raw clay from abundant reserves is located adjacent to our production facility. The product can be reclaimed so it has a second life cycle

### Standards

**Quality**  
BS EN ISO 9001: Quality management systems

**Environmental**  
BS EN ISO 14001 Environmental management systems

**Manufacturing**  
BS EN 1304: Clay roofing tiles  
BS EN 1024: Geometric characteristics  
BS EN 538: Flexural Strength  
BS EN 539-1: Impermeability  
BS EN 539-2: Frost resistance

**Design & fixing**  
BS 5534: Code of practice for slating and tiling  
BS 8000-6: Workmanship on building sites  
BS 5250: Control of condensation

**Fire resistance**  
BS EN 1304: deemed to satisfy  
BS 476-3: SAA rated

### In use

The contractor must work in accordance with BS 8000-6 and fix all tiles in accordance with BS 5534. Our Fixing SPEC service, together with installation guides for tiles and systems, are available for download from our website [www.sandtoft.com](http://www.sandtoft.com) or contact Technical Support for assistance on 0870 145 2021.

### Maintenance

Extremely low maintenance. Only periodic removal of debris or growth required if in high-risk areas.

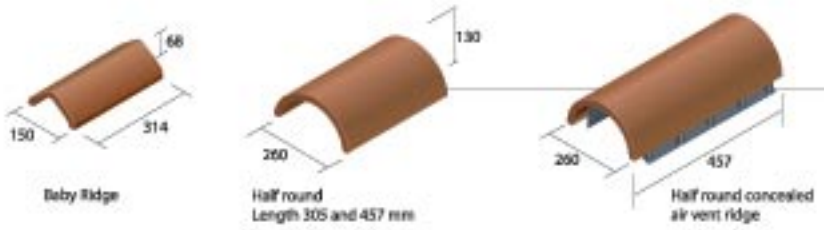
### Packaging and storage

Supplied shrink wrapped on pallets. Download Safe Stacking recommendations from our website [www.sandtoft.com](http://www.sandtoft.com) or contact Customer Support for assistance on 0870 145 2020.

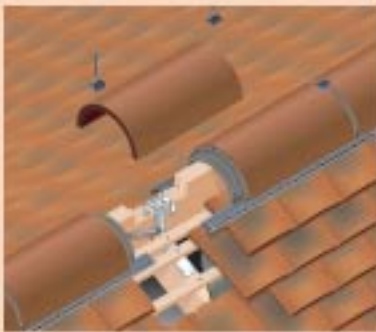
### Health & safety

Adhere to current health and safety rules at all times. Download COSHH sheets from our website [www.sandtoft.com](http://www.sandtoft.com) or contact Customer Support for assistance on 0870 145 2020.

Village  
Fittings &  
Accessories



Profile Ridge system

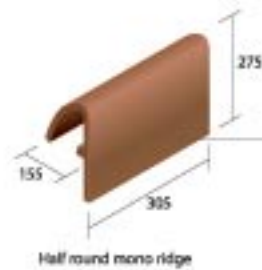


Components

Each pack has sufficient components (excluding ridges) for 2.7 metres of ridge. For use with 305 mm ridges.

Profile Mono Ridge system components

Each pack has sufficient components (excluding ridges) for 2.7 metres of ridge. For use with 305 mm ridges.

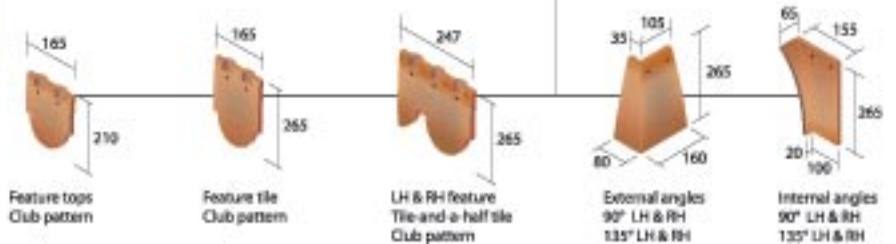


Eaves ventilation system

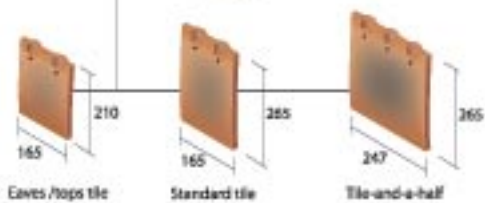
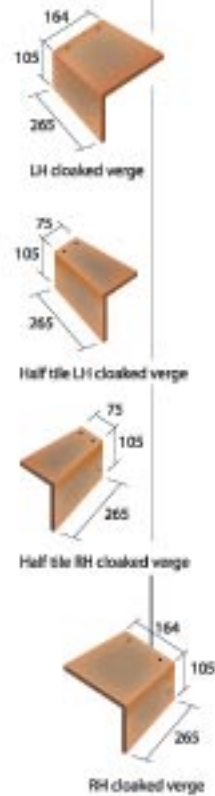
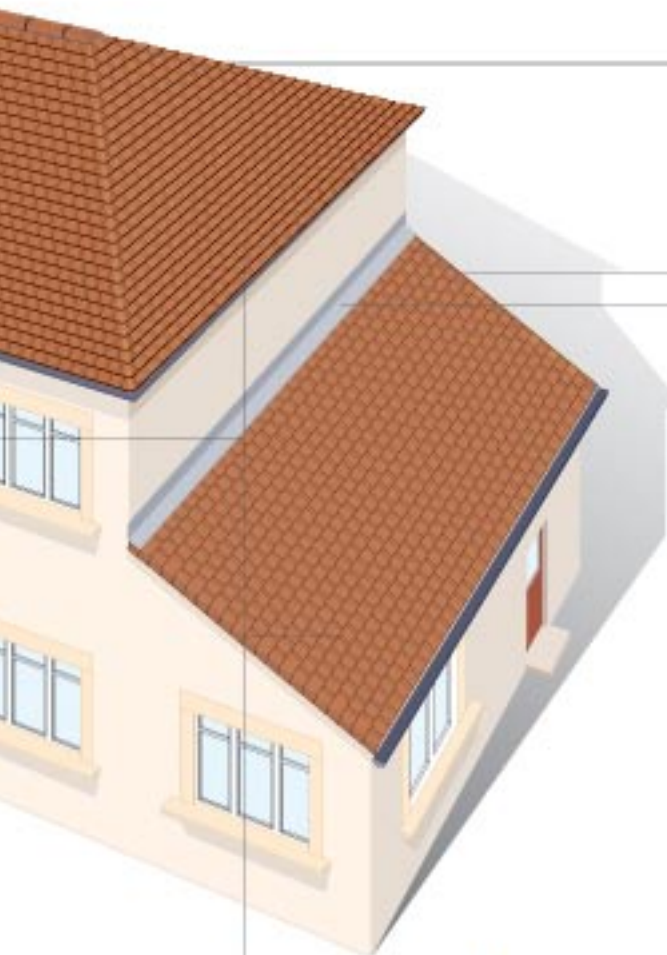
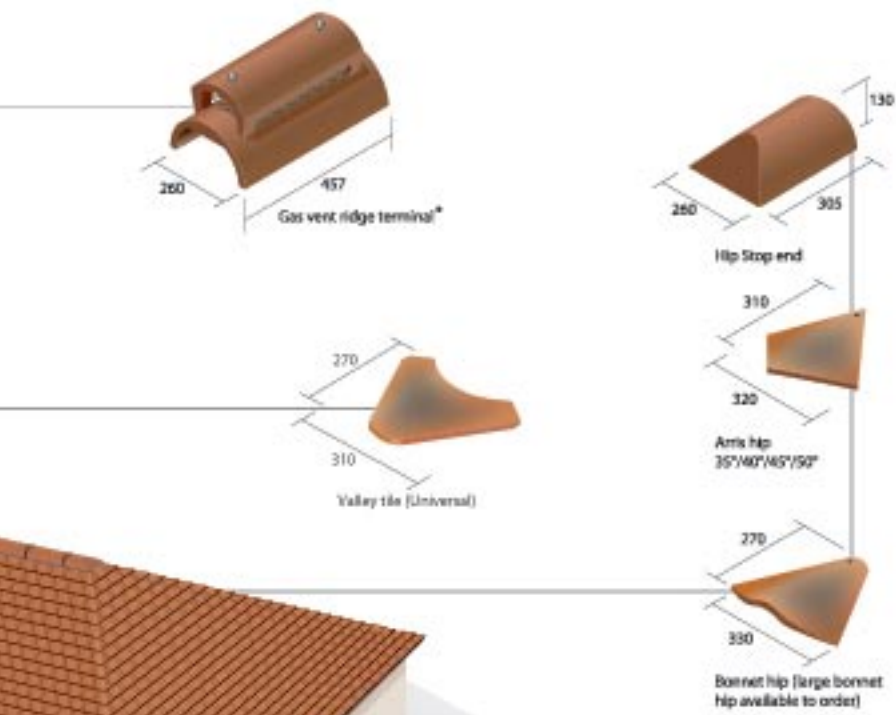


Components

The Sandtoft eaves ventilation system is available in 6 metre packs. Systems are available in 10 mm and 25 mm.



**\* Important** When gas flue terminals are used in conjunction with dry fix systems a gas vent conversion kit is required. This consists of 4 no. 900mm long ventilator-closure strips to prevent exhaust gases from entering the roof void at either end of the gas flue terminal.



**Rollridge system**



**Components**  
Each pack has sufficient components (excluding ridges) for 5.0 metres of ridge.

**Roll Hip system**



**Components**  
Each pack has sufficient components (excluding hip tiles) for 5.0 metres of hip.

**Abutment ventilation system**



**Components**  
The Sandtoft Rollvent top abutment ventilation system comes in 3 metre rolls and is suitable for all profiles. Copper fixing clips are included.

Environment



Colour: Reclaimed

# 100% Green Commitment

Choosing the **Village** tile means choosing the product of a truly eco-conscious company. At Sandtoft, we are passionate about reducing our impact on the environment and providing the construction industry with greener building materials. Our UK manufacturing processes are audited to environmental standard ISO 14001, but on top of this, we have taken radical steps to reduce our CO<sub>2</sub> emissions.

Significantly, we have switched our entire UK operation to 100 per cent renewable electricity, begun an ambitious conversion of our vehicles to 100 per cent biodiesel and undertaken a range of other energy efficiency methods. All of our clay pits are adjacent to our factories, reducing the CO<sub>2</sub> generated through the transportation of raw materials, and we endeavour to source all of our third-party materials from quality local suppliers.

In 2000, the ceramic industry made a pledge to the government that the sector will reduce its carbon emissions by 10 per cent before 2010. Through our proactive environmental policies, Sandtoft has achieved this target more than four years ahead of schedule; and since 2001, we have reduced the carbon footprint of our clay business by 40 per cent. However – we don't

intend to stop there. We will continue to adapt and evolve our operation to further reduce our carbon emissions.

We are also reducing our landfill waste, working towards becoming a zero landfill business. The vast majority of our waste is already recycled back into the manufacturing process and our fired clay waste is used as hardcore for road construction. Because our clay roof tiles are so durable, they are often reused, either on other installations or for a variety of different applications. We actively encourage this second lifecycle and appreciate the environmental value of reusing building materials.

Support



Colour: Reclaimed

# Quality products with complete support

## Customer Support and General Enquiries

Tel 0870 145 2020

Fax 0870 145 2019  
info@sandtoft.co.uk  
www.sandtoft.com

## Technical Support

Tel 0870 145 2021  
Fax 0870 145 2019  
technical@sandtoft.co.uk

## Ordering and deliveries

Clay products including Koramic range  
Tel 0870 145 2022  
Fax 0870 145 2018  
orders@sandtoft.co.uk

## Sandtoft Training and Assessment Centre (STAC)

Tel 0870 145 2020

To ensure total peace of mind, Sandtoft offers a range of support and guarantee packages that encompass design, specification and installation.

### Durability Guarantee

The roof is the single most exposed element of the building envelope – and as such, it needs to be as durable as it is beautiful. At Sandtoft, we are committed to providing the highest quality roofing solutions, and we are willing to provide the guarantees that will offer you peace of mind when investing in our products. All of our clay roof tiles are guaranteed to last at least 60 years, but we go beyond simple durability guarantees.

### Roof SPEC Guarantee

Sandtoft can also provide a comprehensive design specification for your roof; a design specification that we will guarantee for 20 years under our Roof SPEC guarantee system. With Roof SPEC you can be assured that your roof is designed to comply with all of the relevant building standards and best practices, and is guaranteed to remain weathertight for 20 years.

### Fixing Specifications

Sandtoft also offers the Fixing SPEC comprehensive fixing specification service – designed to ensure your roof is fixed correctly and securely in accordance with the relevant British Standards. Using BRE BREV data, our postcode-based system provides quick and accurate fixing recommendations to suit your project's geographical position and design specifics. Fixing SPEC is available through our website at [www.sandtoft.com](http://www.sandtoft.com) – simply fill in your project details and we'll do the rest.

### CAD Library

To help save you time, we also offer a vast online library of CAD details through our website, in DWG, DXF and JPEG formats.

### Installation

For detailed guidance on how to install **Village** please download an Installation Guide from our website or contact Customer Support on 0870 145 2020.

For more information on Sandtoft visit [www.barbourproductsearch.info](http://www.barbourproductsearch.info)



For more information on the widest and most innovative range of roof tile systems in the UK please visit **[www.sandtoft.com](http://www.sandtoft.com)** or call 0870 145 2020 for a product selector



**CAMPAGNING FOR  
BEAUTIFUL ROOFS**

Tile colours shown in this brochure are as accurate as the printing process will allow.

Product samples are available upon request.

At Sandtoft we are continually innovating and improving our product range.

We reserve the right to change product specifications without notice.

**This brochure is printed on 75% post consumer waste recycled paper and is FSC accredited.**