

DEKS

EASY TO WORK WITH

Civils & Plumbing Range

DEKS

EASY TO WORK WITH

BandFlex EPDM Flexible Couplings



Standard Couplings

Designed to be used where a full resistance to shear or deflection is required, made from quality EPDM rubber and 316 stainless steel end and center bands. BandFlex couplings have undergone rigorous long term tests. These couplings offer installers a peace of mind connection, and are expected to have a lifetime beyond the pipelines design life.

Product Code	Description
DSC115	BandFlex Standard Coupling 100-115mm
DSC125	BandFlex Standard Coupling 110-125mm
DSC137	BandFlex Standard Coupling 120-137mm
DSC150	BandFlex Standard Coupling 125-150mm
DSC165	BandFlex Standard Coupling 140-165mm
DSC180	BandFlex Standard Coupling 160-180mm
DSC200	BandFlex Standard Coupling 175-200mm
DSC215	BandFlex Standard Coupling 190-215mm
DSC225	BandFlex Standard Coupling 200-225mm
DSC240	BandFlex Standard Coupling 215-240mm
DSC250	BandFlex Standard Coupling 225-250mm
DSC265	BandFlex Standard Coupling 240-265mm
DSC275	BandFlex Standard Coupling 250-275mm
DSC285	BandFlex Standard Coupling 260-285mm
DSC290	BandFlex Standard Coupling 265-290mm
DSC315	BandFlex Standard Coupling 290-315mm
DSC335	BandFlex Standard Coupling 310-335mm
DSC345	BandFlex Standard Coupling 320-345mm
DSC365	BandFlex Standard Coupling 340-365mm
DSC385	BandFlex Standard Coupling 360-385mm
DSC420	BandFlex Standard Coupling 395-420mm



Pipe Couplings

Used to connect pipes where minimal shear and deflection conditions exist on site. EPDM pipe couplings are designed to connect pipe of a similar material and, or size. Couplings have been extensively tested for above ground and below ground usage applications.

Product Code	Description
DPC115	BandFlex Pipe Coupling 100-115mm
DPC125	BandFlex Pipe Coupling 110-125mm
DPC135	BandFlex Pipe Coupling 120-135mm
DPC150	BandFlex Pipe Coupling 125-150mm
DPC165	BandFlex Pipe Coupling 145-165mm
DPC175	BandFlex Pipe Coupling 160-175mm
DPC180	BandFlex Pipe Coupling 160-180mm
DPC195	BandFlex Pipe Coupling 180-195mm
DPC200	BandFlex Pipe Coupling 175-200mm
DPC215	BandFlex Pipe Coupling 200-215mm
DPC225	BandFlex Pipe Coupling 210-225mm
DPC250	BandFlex Pipe Coupling 225-250mm
DPC275	BandFlex Pipe Coupling 250-275mm
DPC290	BandFlex Pipe Coupling 265-290mm



Adaptor Couplings

These couplings provide an excellent and cost efficient method of jointing two pipes with differing diameters without the

Product Code	Description
DAC4000	BandFlex Adaptor Coupling 137-118 to 122-108mm
DAC6000	BandFlex Adaptor Coupling 180-200 to 160-180mm



Large Standard Couplings

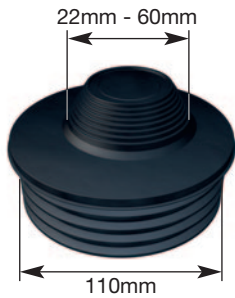
DEKS can manufacture large diameter standard couplings up to 4m diameter. Made from superior specification rubber and stainless steel you can be sure of a great quality coupling with all the benefits of a peace of mind connection!

Product Code	Description
DSC420 – DSC4000	BandFlex Large Standard Coupling 420mm to 4000mm (Special Order)

BandFlex Rain/Waste Adaptor

ISO9001

Universal Waste Adaptor

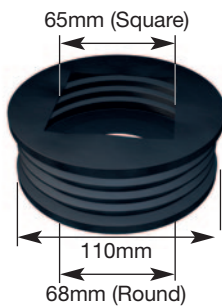


UWA100
Accepts 22mm to 60mm waste pipe.

External waste pipes can be connected directly to a surface water drain, or depending on the design, via a gully trap to the underground drainage system. Simply cut the UWA100 to the required pipe size.

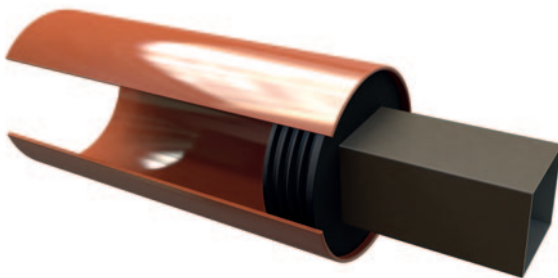
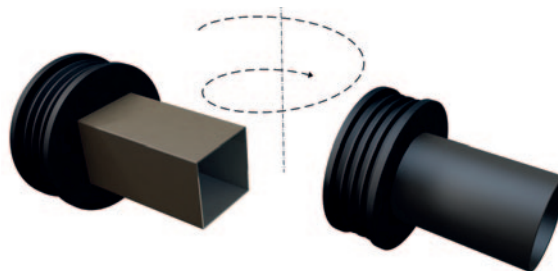


Universal Rainwater Adaptor



URA100
Accepts 68mm round and 65mm square down pipe.

External rainwater downpipe can be connected directly to the surface water drain or, depending on the design via a gully trap to the underground drainage system.



- ✓ Manufactured from high quality EPDM
- ✓ Connects all 110mm round & square rainwater pipes & fittings
- ✓ Low cost universal solution
- ✓ Tidy post fix appearance

- ✓ Easily cut to size to fit 22-60mm (3/4" - 2") waste pipe.
- ✓ Can be used as an adaptor or stopper.
- ✓ Stops construction debris from blocking drains when used as a stopper

ValueFlex EPVC Pipe Connectors



Adaptor Couplings

Adaptors will connect two pipes of different sizes. As a general rule adaptors will close down between 5mm and 20mm from the larger moulded size stated.

Product Code	Description	Pipe OD Range
DACE-44-37	ValueFlex 1.5" x 1.25"	44-36mm to 37-29mm
DACE-57-37	ValueFlex 2" x 1.25"	57-49mm to 37-29mm
DACE-57-44	ValueFlex 2" x 1.5"	57-45mm to 44-36mm
DACE-60-48	ValueFlex 2.5" x 1.5"	60-48mm to 48-40mm
DACE-89-48	ValueFlex 3" x 1.5"	89-75mm to 48-40mm
DACE-89-60	ValueFlex 3" x 2"	89-75mm to 60-48mm
DACE-111-48	ValueFlex 4" x 1.5"	111-100mm to 48-40mm
DACE-112-60	ValueFlex 4" x 2"	112-100mm to 60-48mm
DACE-114-89	ValueFlex 4" x 3"	114-97mm to 89-75mm
DACE-120-114	ValueFlex 4" AC to 4" CI/PVC	120-108mm to 114-97mm
DACE-133-89	ValueFlex 4" EW to 3" CI/PVC	133-121mm to 89-74mm
DACE-137-114	ValueFlex 4" EW to 4" CI/PVC	137-125mm to 114-97mm
DACE-4000	ValueFlex 4" EW to 4" PVC	140-125mm to 112-100mm
DACE-142-114	ValueFlex 5" x 4"	142-122mm to 114-97mm
DACE-162-114	ValueFlex 6" x 4"	162-147mm to 114-97mm
DACE-190-114	ValueFlex 6" EW to 4" CI/PVC	190-170mm to 114-97mm
DACE-190-170	ValueFlex 6" EW to 6" CI/PVC	190-170mm to 170-150mm
DACE-6000	ValueFlex 6" EW (OLD) to 6" PVC	196-176mm to 162-142mm
DACE-215-162	ValueFlex 8"x 6"	215-195mm to 162-142mm



Pipe Couplings

Pipe couplings will connect pipes which are similar or the same in diameter, Couplings will close down to smaller diameters between 5mm and 20mm from the moulded size stated.

Product Code	Description	Pipe OD Range
DPCE-27	ValueFlex 0.75" x 0.75" PVC	27 - 22mm
DPCE-34	ValueFlex 1" x 1" PVC	34 - 24mm
DPCE-37	ValueFlex 1.25" x 1.25" PVC	37 - 27mm
DPCE-49	ValueFlex 1.5" x 1.5"	49 - 41mm
DPCE-61	ValueFlex 2" x 2" PVC	61 - 46mm
DPCE-70	ValueFlex 2.5" x 2.5" PVC	70 - 55mm
DPCE-84	ValueFlex 3" x 3"	84 - 69mm
DPCE-92	ValueFlex 3" x 3" PVC	92 - 80mm
DPCE-114	ValueFlex 4" x 4" PVC	114 - 97mm
DPCE-142	ValueFlex 4"x 4" EW	142 - 122mm
DPCE-170	ValueFlex 6" x 6" PVC	170 - 150mm
DPCE-190	ValueFlex 6" x 6" EW	190 - 170mm
DPCE-220	ValueFlex 8" x 8" PVC	220 - 200mm

ValueFlex EPVC Pipe Connectors



Elbows and Tees

Solve tricky plumbing applications with collapsible fittings.



Product Code	Description	Pipe OD Range
DECE-L-48	ValueFlex Elbow 1.5"	48 - 40mm
DECE-T-48	ValueFlex Tee 1.5"	48 - 40mm
DECE-L-60	ValueFlex Elbow 2" x 2"	60 - 48mm
DECE-T-60	ValueFlex Tee 2" x 2"	60 - 48mm
DECE-L-89	ValueFlex Elbow 3" x 3"	89 - 75mm
DECE-T-89	ValueFlex Tee 3" x 3"	89 - 75mm
DECE-L-114	ValueFlex Elbow 4" x 4"	114 - 197mm
DECE-T-114	ValueFlex Tee 4" x 4"	114 - 97mm



End Caps

Provide secure air and water tight seals.

Product Code	Description	Pipe OD Range
DECE-EC-48	ValueFlex End Cap 1.5"	48 - 40mm
DECE-EC-60	ValueFlex End Cap 2"	60 - 52mm
DECE-EC-89	ValueFlex End Cap 3"	89 - 75mm
DECE-EC-114	ValueFlex End Cap 4"	114 - 97mm
DECE-EC-140	ValueFlex End Cap 5"	140 - 125mm
DECE-EC-160	ValueFlex End Cap 6"	160 - 145mm
DECE-EC-215	ValueFlex End Cap 8"	215 - 195mm

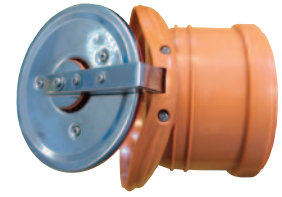
EW = EARTHENWARE / CLAY
CI = CAST IRON
PVC = PLASTIC
EW (OLD) = EARTHENWARE (OLD) / CLAY (OLD)

DekDrain Water Management



Flap Valve

Devices for protecting rooms on the lower levels against flooding caused by backward flow of storm water and sewage. Flap valves also effectively protect plumbing systems from rodents entering the buildings.

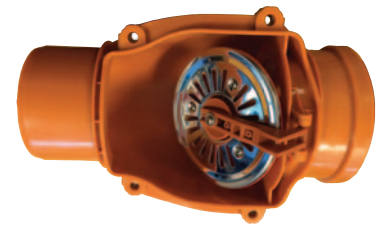


Product Code	Description
FV-110	Flap Valve 110mm
FV-160	Flap Valve 160mm



Non-Return Valve

Non-return valve effectively seals your underground pipe work from a back flow of storm water, rodents and smells.

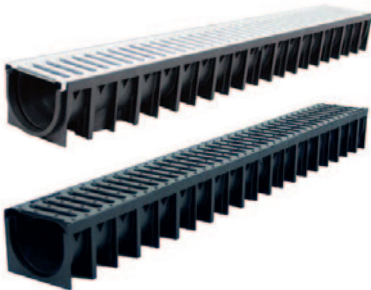


Product Code	Description
NRV-110	Non Return Valve 110mm
NRV-160	Non Return Valve 160mm

Channels



A15



DekDrain 4ALL Channels

Available in plastic, galvanised steel and stainless steel A15 gratings in compliance with EN1433. Made from light weight and enhanced strength HD-PE material.

Plastic and galvanised steel corner quads - end caps and outlet connectors. All components are made to easily connect with the lengths of channel to create a seamless run.

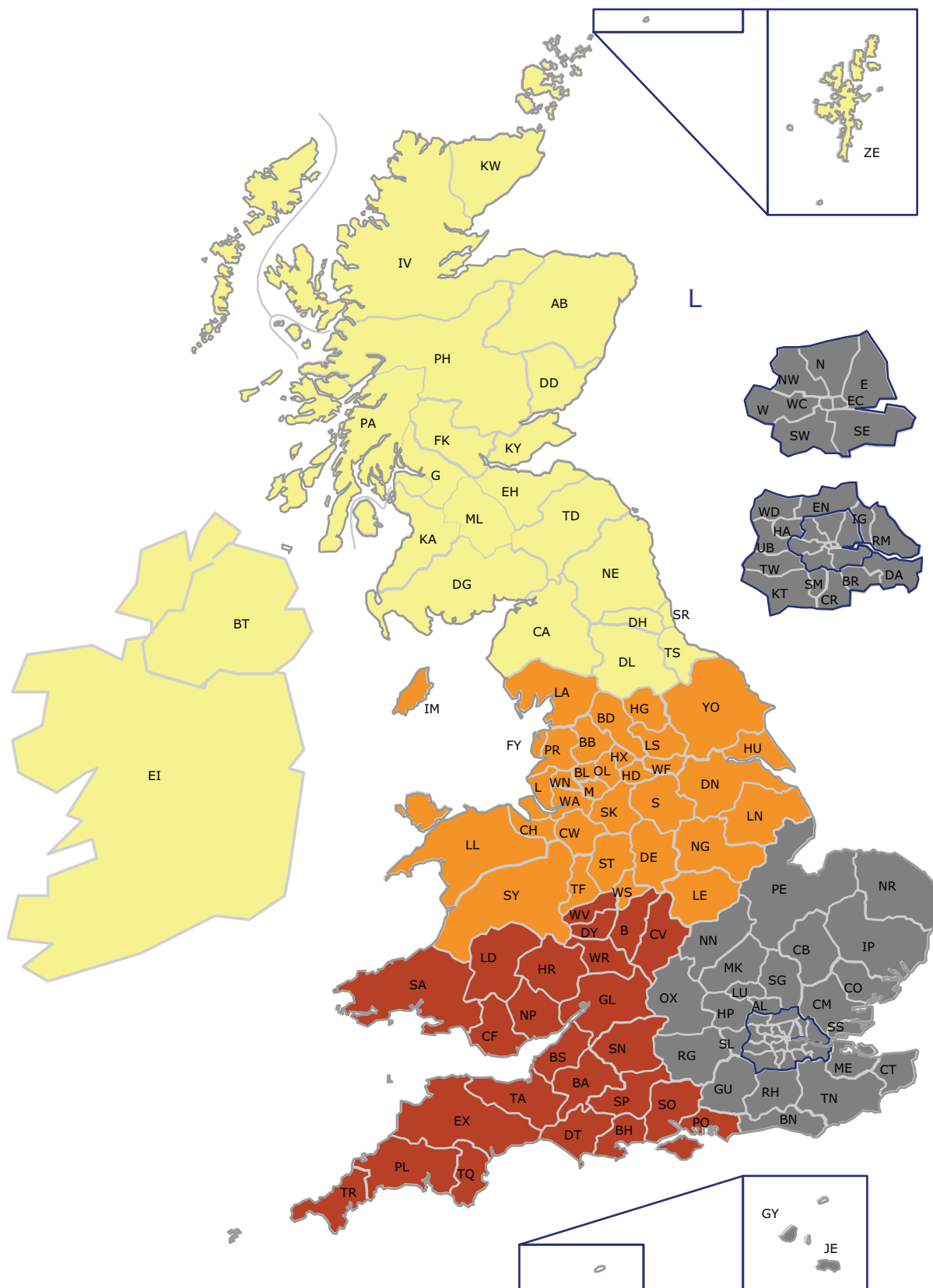


DekDrain 4ALL Garage Pack

3 x galvanised steel channels + 1 x outlet + 2 x end caps. A15 gratings are in compliance with EN 1433. Made from light weight and enhanced strength HD-PE material.

Product Code	Edge Rail	Dimensions L x W x H (mm)	Grating Material
DCD-1M-PL	Plastic	1000 x 120 x 92	Plastic
DCD-1M-GS	Plastic	1000 x 120 x 92	Galvanised Steel
DCD-1M-SS	Plastic	1000 x 120 x 92	Stainless Steel
DCD-GP	Plastic	1000 x 120 x 92	Galvanised Steel
DCD-CQ-PL	Plastic	120 x 120 x 92	Plastic
DCD-CQ-GS	Plastic	120 x 120 x 92	Galvanised Steel
DCD-AS	Accessories bag includes outlet connector and two end caps		

Area Sales Managers



South West England & Wales

Mark Stewart
 e: marks@deks.co.uk
 m: 07903 389 220

South East England

Robin Clark
 e: robinc@deks.co.uk
 m: 07854 312 823

Midlands England

Martin Hipkin
 e: martinh@deks.co.uk
 m: 07780 446 597

Scotland, N. Ireland, ROI & North England

Hugh McKeachan
 e: hughm@deks.co.uk
 m: 07864 157 126

DEKS

EASY TO WORK WITH

t : 01275 858866
e : sales@deks.co.uk
w : www.deks.co.uk

Deks Industries Europe Ltd
West End Trading Estate
Blackfriars Road
Nailsea, Bristol, BS48 4DJ

While every effort has been made to ensure that the details in this brochure are correct at time of print
we cannot accept responsibility for any errors or omissions

CR UK - Oct 2018