



Metal Technology



The Ground Floor Treatments Range offers the architect and specifier a range of framing suitable for all types of commercial entrances.





System 9 Flush Glaze

▲ Sainsbury, Northern Ireland



▲ Fultons, Belfast

◀ Sainsbury, Northern Ireland

Introduction

The basic suite of profiles allows for both single and double glazed configurations. On the former the sections measure 100mm x 45mm and the latter 100mm x 55mm. Both have corner assembly options based around a 100mm x 100mm post. In addition, other special sections available from this range permit a 135 degree corner and a radius corner post to be provided. Around this suite can be designed limitless profiles thereby allowing architects to achieve flexible designs. Glazing options accommodate single glazed through to 24mm units directly into the flush glaze system. As with all Metal Technology products the flush glaze system is manufactured to exacting standards giving economy and strength for many years of aesthetic and trouble-free operation. Metal Technology have an extensive range of commercial quality door systems which can be used in conjunction with the flush glazed system.

Curved Sections

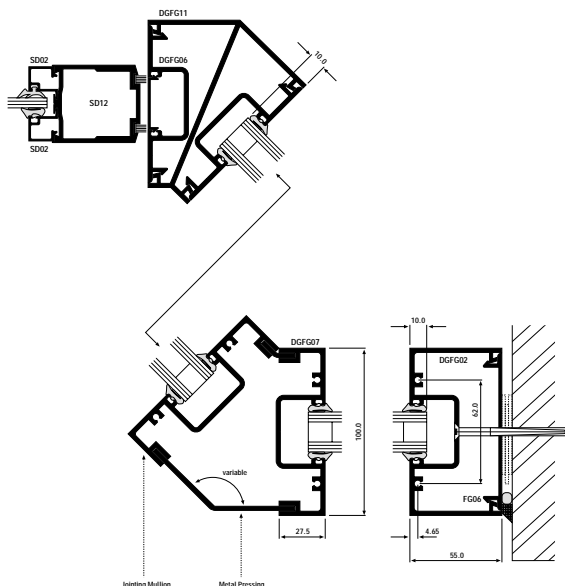
In accordance with Metal Technology's policy of offering the maximum flexibility to the designer, there are special facilities available in-house to enable the following sections to be supplied curved: **FG02, FG03, FG04, FG05, FG06, FG07**. Requirements for curved sections should be discussed with Metal Technology at an early stage in the project.

Construction

Frame members are square cut shaped and fixed securely to the frame by means of stainless steel screws driven into screw grooves in the sections. Frame joints are sealed during construction against entry of water. Extruded glazing gaskets are provided to resist the ingress of water.

Performance

Flush glaze screen sections are designed for use as ground floor treatments in moderately exposed areas only. Where the site is exposed or above ground floor, consideration should be given to the use of other systems from Metal Technology's extensive range.



▲ In-house curving facility



▲ Health Centre, Bangor

System 10 Commercial Door



▲ Industrial Development, Sheffield

Introduction

The basic suite of profiles comprises main and slave stiles, top rails, mid rails, bottom rails and threshold. To these can be added additional profiles to meet every possible application, all with the benefits of minimal fabrication. Glazing options accommodate single glazed through to 24mm glazing units and infill panels. With the double glazed, alternative provision has been made for the outer bead to be secured to the frame, thus enhancing the door's security. As with all Metal Technology systems, the commercial door system has been manufactured to exacting standards giving the required strength necessary for its heavy usage but with economy, allowing many years of aesthetic trouble-free operation.

From the extensive range of profiles and accessories Metal Technology Ltd can offer:

- single/double action pivot doors
- fully rebated doors
- sliding doors
- fully welded doors

Construction

Frame members are square cut fixed securely together by means of aluminium cleats and stainless steel screws and bolts. Frame joints are sealed during construction against entry of water. Extruded glazing gaskets and woolpiles are provided to resist the ingress of water.

Kits

In addition to providing commercial door sections in bar lengths, along with their accessories, Metal Technology can provide standard size or made to measure door and mid rail kits.

Size Limits

	Max. Height	Max. Width	Max. Weight
External Doors	3.0m	1.05m	90Kg
Internal Doors	3.0m	1.20m	90Kg

Performance

Commercial pivoting doors are designed for use at ground floor in moderately exposed areas only. Where the site is exposed or above ground floor, consideration should be given to using the commercial hinged door or the System 18 thermally broken door which when fully rebated will offer improved performance.



▲ Cable Tel, Northern Ireland

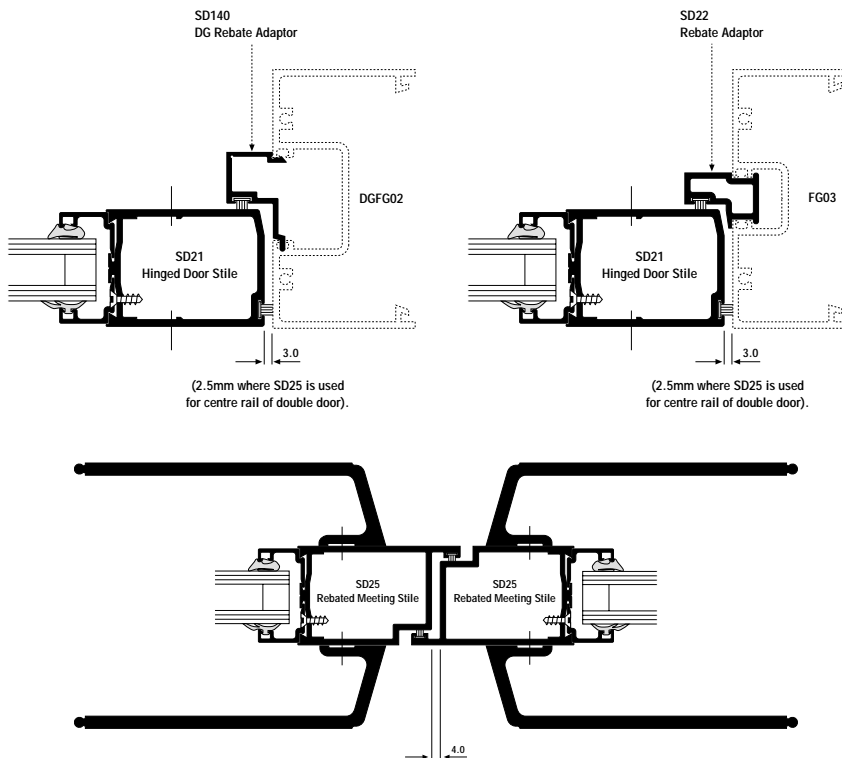


▲ Marks and Spencer, Belfast

Design the Central Focus



▲ Transport Centre, Northern Ireland



Maintenance
As with all mechanical products regular "preventative maintenance" is necessary if trouble free operation is required and it is strongly recommended that such a programme is arranged either with a competent door maintenance company or with the maintenance staff of the building where the doors are installed. Items such as overhead closers, hinges, locks and weatherstripping need regular care to keep them functioning correctly and adjustment is especially necessary in the first few months when the doors are "bedding in".

Quality through commitment

Materials

Aluminium profiles are extruded from aluminium alloy 6063 T6, T5 or T4 complying with the recommendations of BS1474.

Finishes

The range of sections can be provided in any of the following range of finishes:

1. Anodised to BS1615 or BS3987
2. Liquid organic coated to BS4842
3. Powder organic coated to BS6496

Glazing

Setting blocks and location pieces are fitted in accordance with BS6262 in order to ensure all framing is maintained rigid and square.

Installation

Detailed installation instructions are provided which should be strictly followed.

Development

Our policy is to continually research the market for new and improved products. We must therefore retain the right to amend specifications without prior notice. It is recognised at Metal Technology that in some instances special sections may be required for particular projects. When this occurs it may be possible to produce special sections subject to there being sufficient quantity and adequate time.

Product Range

Curtain Walling Systems

Roof Glazing

Dual Colour Top Swing Window
Dual Colour Tilt Turn Window
Dual Colour Casement Window
Dual Colour Commercial Doors

Thermal Architectural Subframe

Thermal Casement Window
Thermal Pivot Window
Thermal Tilt Turn Window
Thermal Top Swing Window
Thermal Vertical Sliding Window

Ground Floor Treatments

Commercial Entrance Doors
Box and Bead System
Patent Glazing System
Secondary Glazing
Residential and Patio Doors



Metal Technology

Architectural Aluminium

Metal Technology Limited

Steeple Road Industrial Estate,
Steeple Road, Antrim BT41 1AB
Northern Ireland

Tel: 01849 487777 Fax: 01849 487878

www.metalltechnology.com

Email: sales@metalltechnology.com

