

## Cast-iron radiators as individual as your home

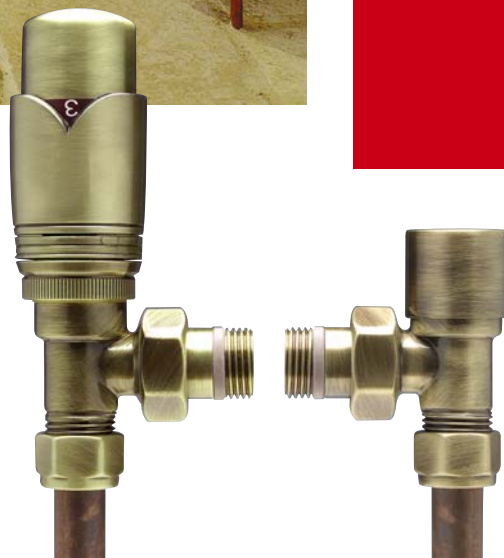
To suit every application,  
from a restoration project  
to a new build.



# Cast Iron Radiators

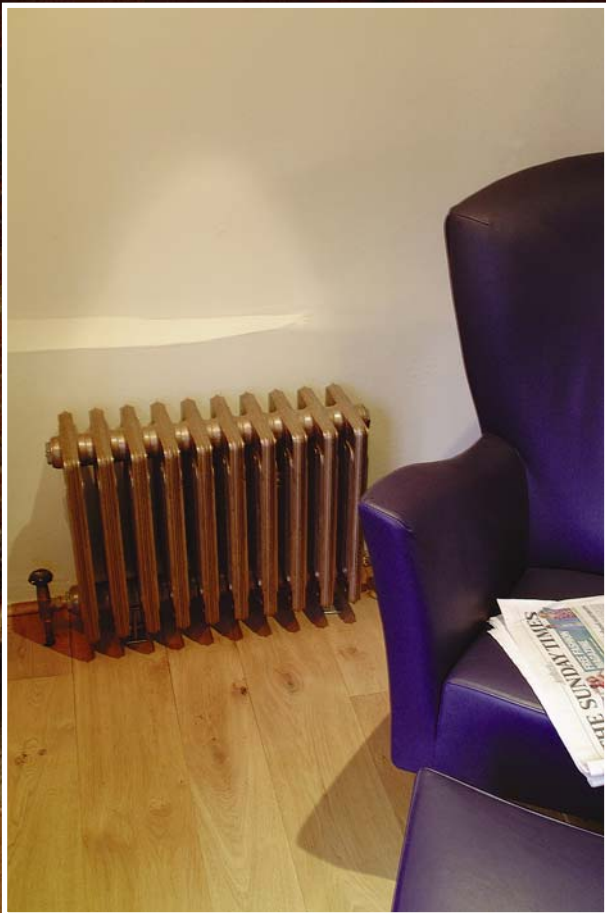
# AEL Victoriana

**AEL**  
HEATING SOLUTIONS





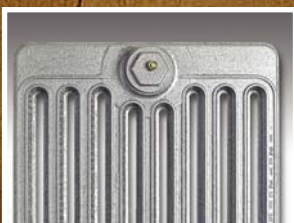
6 Column 880mm height 18 section



6 Column 430mm height 10 section



2 Column 880mm height 10 section



9 Column



6 Column



4 Column



2 Column

# AEL Victoriana

## CAST IRON RADIATORS

AEL Victoriana traditional central heating radiators are the ideal choice for Victorian and other older-style properties. Manufactured in sectional columns, they add a touch of period authenticity and a special kind of warmth and comfort that only genuine cast-iron can provide.

### **As individual as your home**

From the tall and slim hallway radiator to the short and squat window seat, the sectional column concept enables AEL Victoriana radiators to be assembled to meet your individual requirements. With an extensive selection of sizes we can build a radiator to suit every application, from a restoration project to a new build. Radiators are supplied with a comprehensive range of brackets and mountings to give you total fixing flexibility.

### **Optional Painted Finishes**

The Victoriana radiator range is supplied in a primer finish as standard or in an optional specified RAL colour. A colour swatch brochure with a choice of over 200 colours is available and can be viewed on the home page of our website [www.aelheating.com](http://www.aelheating.com) or it can be posted out to you by contacting our head office Tel:01928 579068. Please note, for a professional finish cast iron radiators should always be powder coated at a low bake.

### **Sizing and selection**

The nine Victoriana models offer the choice of 5 heights, ranging from 300mm to 880mm, and 4 depths, ranging from 70mm (2 columns) to 340mm (9 columns). Each section is 60mm wide and provides different levels of heat output, according to its height and depth. The number of columns, either 2, 4, 6 or 9 determine the depth Section.

AEL Victoriana radiators can be installed in lengths of up to 60 sections (3.6 m) but, because of the sheer weight and size, it is more practical to supply them in units of 10 sections or parts there after.

Section No.	Height	Depth	Weight	Water Content	Tapping Centres	Output 56°C
V9/30 (9 Column)	300 mm 11.81 ins	340 mm 13.29 ins	7.60 Kg 16.75 lbs	1.03 ltrs 0.22 gals	220 mm 8.66 ins	127 Watts 434 Btu/h
V6/43 (6 Column)	430 mm 16.93 ins	225 mm 8.86 ins	6.90 Kg 15.21 lbs	0.78 ltrs 0.17 gals	350 mm 13.78 ins	118 Watts 402 Btu/h
V4/58 (4 Column)	580 mm 22.83 ins	146 mm 5.75 ins	6.10 Kg 13.45 lbs	0.71 ltrs 0.15 gals	500 mm 19.69 ins	108 Watts 368 Btu/h
V6/58 (6 Column)	580 mm 22.83 ins	225 mm 8.86 ins	9.10 Kg 20.06 lbs	1.00 ltrs 0.22 gals	500 mm 19.69 ins	158 Watts 540 Btu/h
V4/68 (4 Column)	680 mm 26.77 ins	146 mm 5.75 ins	6.70 Kg 14.77 lbs	0.78 ltrs 0.17 gals	600 mm 23.62 ins	127 Watts 434 Btu/h
V6/68 (6 Column)	680 mm 26.77 ins	225 mm 8.86 ins	10.4 Kg 22.93 lbs	1.16 ltrs 0.25 gals	600 mm 23.62 ins	179 Watts 610 Btu/h
V2/88 (2 Column)	880 mm 34.65 ins	70 mm 2.75 ins	4.70 Kg 10.36 lbs	0.52 ltrs 0.11 gals	800 mm 31.50 ins	97 Watts 330 Btu/h
V4/88 (4 Column)	880 mm 34.65 ins	146 mm 5.75 ins	8.80 Kg 19.40 lbs	0.94 ltrs 0.20 gals	800 mm 31.50 ins	163 Watts 556 Btu/h
V6/88 (6 Column)	880 mm 34.65 ins	225 mm 8.86 ins	13.4 Kg 29.54 lbs	1.43 ltrs 0.31 gals	800 mm 31.50 ins	233 Watts 795 Btu/h

**Correction Factors**

Example: Water Temp IN 82°C:Temp OUT 71°C:AV Mean Temp 76.5°C:Room Amb Temp 20°C = Δ<sup>t</sup> 56 °C

Δ <sup>t</sup> °C	0	1	2	3	4	5	6	7	8	9
30	0.47	0.49	0.51	0.53	0.55	0.56	0.58	0.60	0.62	0.64
40	0.66	0.68	0.70	0.72	0.74	0.76	0.78	0.80	0.83	0.85
50	0.87	0.89	0.91	0.93	0.96	0.98	1.00	1.02	1.04	1.07
60	1.09	1.11	1.13	1.16	1.18	1.20	1.23	1.25	1.27	1.30



Top Retaining Stays



Standard Cast floor support Height 57mm



Tiger Claw (optional) Height 70mm



Antique brass thermostatic and lockshield valves See our radiator valves brochure for the full selection



Antique brass feed pipe & shroud x2 set



Chrome air vent



Joining nipple



End plug



Air vent & tapping bush

**A selection of fittings & feet available shown above**

AEL Victoriana Radiators are supplied complete with all fittings including feet. If the required radiator exceeds 10 sections, a joining key will need to be purchased.

All dimensional drawings of radiators and valves for pre installing pipework can be viewed on our website [www.aelheating.com](http://www.aelheating.com)



**HEAD OFFICE:** 4 Berkeley Court, Manor Park, Runcorn, Cheshire, WA7 1TQ  
Tel: 01928 579068 Fax: 01928 579523  
e-mail: [sales@aelheating.com](mailto:sales@aelheating.com)

AEL reserve the right to alter designs and specifications without prior notice

Plate Heat Exchanger Packages   Gas fired Condensing Boilers   Cast Iron Sectional Boilers   High Output Tubular Aluminium Steel Radiators   Designer Bathroom Radiators   Corgi Approved Engineers