

Futura lever handles

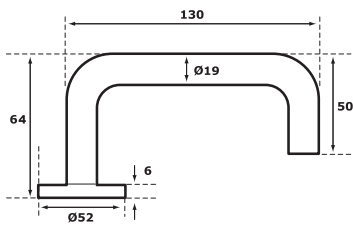


Features

- Meets the requirements of BS EN179 for escape levers
- 'Return to door' design ideal for fire escape doors. Meets the requirements of the Disability Discrimination Act (1995)
- Fixing plates are made of stainless steel with 2 pairs of holes placed to suit DIN or Scandinavian standards

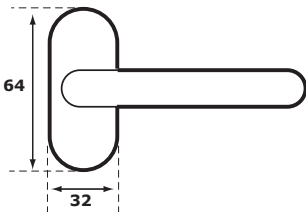
- Stainless steel tube, 1.25mm thick, to prevent overload of the lockcase, with no need for a support spring
- Supplied complete with relevant escutcheons, roses/plates and fixings

Lever on round rose



Handle dimensions for
60-0219-PSS
60-0519-PSS

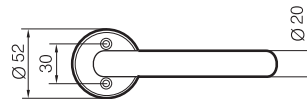
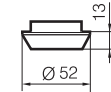
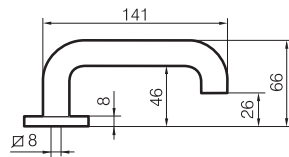
Narrow rose



Handle dimensions for
- 3 -20/648-PSS

Presto lever handles

- 3-20/030-PSS

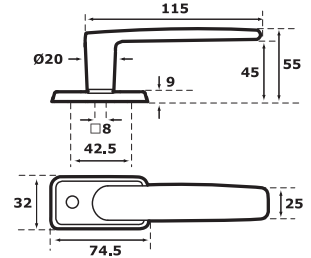


- 3-20/002-PSS

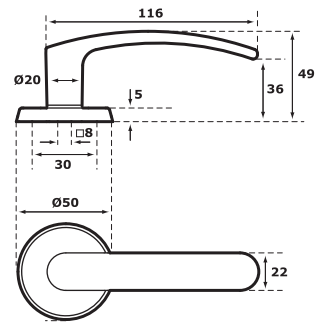


Primo handles

4/0645



6/007



HANDLE	LOCKCASE COMPATIBILITY		
	4190	4922	4193
3-20/030-PSS	•		
3-20/0648-PSS		•	
3-20/002-PSS			•
6/007	•		
4/0645		•	