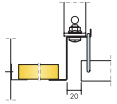


ECOPHON ACCESS[™] FRIEZE

For applications where a smooth continuous transition between the ceiling and the wall is needed. The Access frieze is developed for installation together with Ecophon Access[™] panels. The frieze is connected to the wall without any visible trims. The bevelled edges create a narrow groove between each tile. The tiles are not demountable.

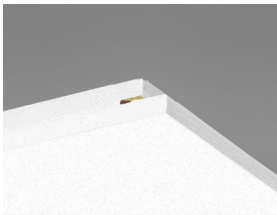


Ecophon Access™ Frieze

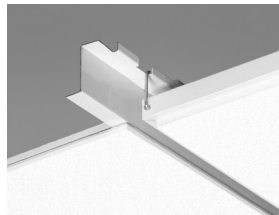


SYSTEM RANGE

Size, mm	2400x600
Special Fixing	•
Thickness	20
Inst. Diagr.	M114



Access frieze tile



Access frieze system

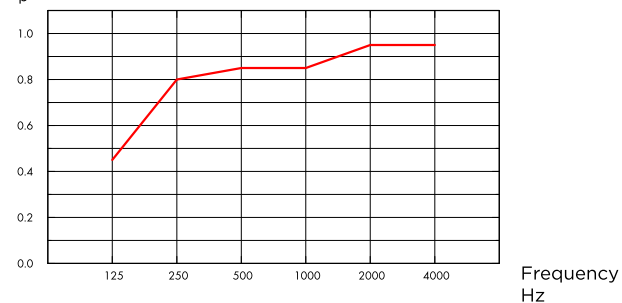


ACOUSTIC

Sound Absorption

Test results according to EN ISO 354. Classification according to EN ISO 11654, and the single value ratings for Noise Reduction Coefficient, NRC and Sound Absorption Average, SAA according to ASTM C 423.

α_p , Practical sound absorption coefficient



— Access Frieze 20 mm, 200 mm o.d.s.
o.d.s = overall depth of system

THK mm	o.d.s. mm	α_p , Practical sound absorption coefficient						α_w	Sound absorption class
		125 Hz	250 Hz	500 Hz	1000 Hz	2000 Hz	4000 Hz		
20	200	0.45	0.80	0.85	0.85	0.95	0.95	0.90	A



INDOOR AIR QUALITY

Certificate / Label	
Eurofins Indoor Air Comfort®	IAC Gold
French VOC	A+



FIRE SAFETY

The glass wool core of the tiles is tested and classified as non-combustible according to EN ISO 1182.

Country	Fire standard	Class
Europe	EN 13501-1	A2-s1,d0



HUMIDITY RESISTANCE

Class C, relative humidity 95% and 30°C, according to EN 13964:2014



VISUAL APPEARANCE

White Frost, nearest NCS colour sample S 0500-N, 85% light reflectance. Gloss < 1.



CLEANABILITY

Daily dusting and vacuum cleaning. Weekly wet wiping.



ACCESSIBILITY

The tiles are non-demountable.



INSTALLATION

Installed according to installation diagrams, installation guides and drawing aid. For information regarding minimum overall depth of system see quantity specification.



MECHANICAL PROPERTIES

See table about Max live load and Min load bearing capacity and Functional demands, Mechanical properties at www.ecophon.com.



CE

Ecophon ceiling systems are CE marked according to the European harmonized standard EN13964:2014. CE marked construction products are covered by a Declaration of Performance (DOP) which enables customers and users to easily compare performance of products available on the European market.

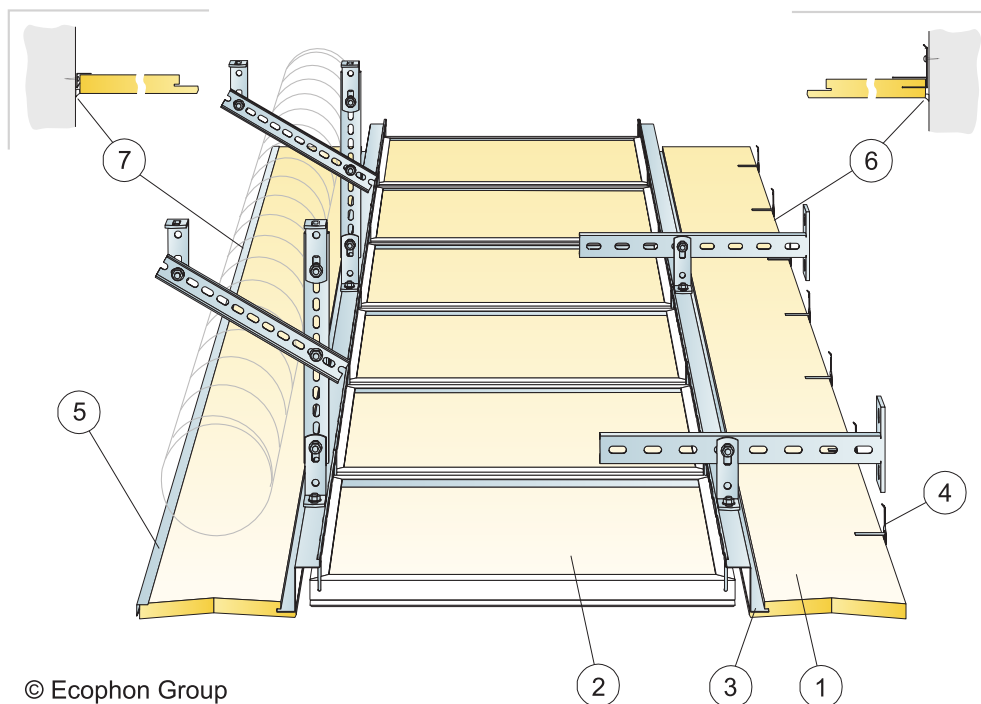
COLOURS AND DESIGN

Akutex™ FT White



White Frost

Wall transition

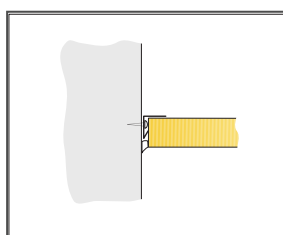
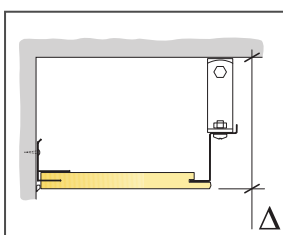


© Ecophon Group

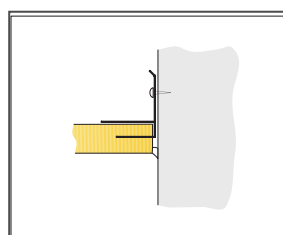
Installation diagram (M114) for Ecophon Access frieze

Quantity specification (excl. wastage)

	Size, mm
	2400x600
1 Access frieze	as required
2 Access panel	as required
3 Access Transition profile 0151	as required
4 Connect Frieze bracket 0043, installed at maximum 500 mm centre. Minimum free depth above tile 150 mm.	as required
5 Connect Frieze trim 0562, fixed at 300 mm centres. Minimum free depth above tile 0 mm	as required
6 Connect frieze bracket 0043 with acrylic sealant	as required
7 Connect frieze trim with acrylic sealant (sealant not supplied by Ecophon)	as required
Δ Min. overall depth of system: See Installation diagram M60, M63 and M64	
δ Min. demounting depth: The system is non-demountable	-
Access frieze: can be divided in two parts if width is less than 300 mm	
	-



Fixing with frieze trim



Fixing with frieze bracket

Size, mm	Max live load (N)	Min load bearing capacity (N)
2400x600x20	0	160

Live load/load bearing capacity