



The Smithy, Fidlers Lane, East Ilsley,  
Berkshire RG20 7LG  
01183 240 130

Stanley Green Trading Estate,  
Unit 8A, Duke Avenue, Cheadle Hulme,  
Cheadle, Stockport SK8 6RX  
01925 648425

[www.alivauk.com](http://www.alivauk.com)  
[enquiries@gruppivas.co.uk](mailto:enquiries@gruppivas.co.uk)

 Aliva UK  
 @AlivaUK



Via Bellaria 40  
47030, San Mauro Pascoli - FC, Italy  
Tel: +39 0541 815 811



DREAM BESPOKE: A-RATED FACADE SYSTEMS

## Contents

- Introduction
- Our accreditations
- Our services
- Aluminium and mesh cladding
- Ceramic cladding
- Stone cladding
- Terracotta cladding
- Glass cladding
- EWI with brick slips
- EWI
- EWI texture design effects
- International projects including stone, aluminium, ceramic and GRC cladding

## Aliva UK introduction

Aliva UK is an industry-leading, award-winning facade specialist. We have grown a demonstrable track-record in the UK over the past 25 years, and internationally for in excess of 70 years, backed by the strength and sector expertise of our Italian parent company Gruppo Ivas, a robust global group with proven longevity.



We offer an extensive range of A-rated facade solutions encompassing a full rainscreen cladding product suite with materials including metal, ceramic, stone, terracotta, glass, GRC and UHPC. That is alongside a Kiwa certified, A1-rated External Wall Insulation and brick slip proposition as well as ceramic and stone slip options.

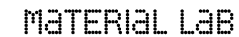
This contemporary facade offering provides statement aesthetics that can be used as standalone finishes or used in unique combination, to meet architectural design intent without compromise and with full customisation possible.

Our systems include sustainable solutions to help maximise the thermal efficiency of buildings to contribute to the Net Zero Carbon agenda.

Our extensive product suite and end-to-end service offering means we can respond to the needs and challenges of any project or sector, from new build to retrofit and refurbishment through to historic renovations and redevelopments.

## Accreditations are all-important

You can see that our workmanship, standards and ethics meet the most rigorous of industry standards from the following memberships, accreditations and approvals that we are proud to hold.





## Our services

### Consultancy

We work in collaboration with architects and main contractors from the start, ensuring that all elements are brought together to transform your vision into reality. Our strategic view delivers your facade to precise specification, on time and on budget for new build and refurbishment. We challenge and innovate in equal measure to find the perfect solution for every project, combining the best product, design, procurement cycles and value engineering. As a full service project partner, we review site conditions and plans so that every functional layer is developed to marry architectural specifications and design intent.

### Design

Our dedicated design team draws on Aliva's Italian heritage to take an architect's vision and translate that into reality with practical plans for your building. We are proud of the legacy of our designs and challenge ourselves to find the most creative design for your brief. But we can also respond at a later stage to resolve critical design issues – as late as the installation phase. This is where the integration of our parent IVAS Group companies and services add value: we can quickly manufacture and provide critical solutions that can be 'parachuted in' to a project. As you would expect, our design services are fully covered by appropriate (PI) insurance policies of up to £10 million.

### Installation

We partner with the most highly-skilled and qualified teams of installers for each type of facade. Our installation managers closely supervise installation to ensure that all fixing equipment and personnel are in place to maintain project schedules and minimise risk. Should your schedule slip, Aliva's trusted installation partners provide our 'on-demand' service to help you recover or overcome potential delays caused by other contractors.

### Structural calculation

Surveys utilising cutting-edge equipment and next generation software enable us to carry out precise structural calculations before we develop detailed designs that are sympathetic to local conditions and guarantee structural longevity. Our offering includes: load calculations to develop the structural frame for your facade, development of the SFS frame, steel or concrete structures, selection and optimisation of structural components to meet load-bearing requirements, acoustic performance, U-values, seismic analysis and structural deformation.

### Bespoke manufacturing and supply

Besides our 'ready to go' facade support systems and facade solutions for the new build and refurbishment markets, we know that many projects require us to manufacture bespoke rainscreen cladding to meet the architect's vision. The majority of our manufacturing takes place in Italy, the home of design flair and our parent company, the IVAS Group. Style is matched with standards; our manufacturing meets the most robust quality checks that allow us to hold a tranche of certifications.

### Project management

Our experienced project managers and on-site team leaders have a detailed understanding of modern construction methods and best practice – skills that have been finely-honed while managing a host of stunning projects in the UK, Italy and around the globe. Working to Quality Management Systems ISO 9001:2015, Aliva UK provides updates, skilled resources and the equipment and materials needed to ensure management standards and practices are upheld. We also hold ISO 14001:2015 for Environmental Management, ensuring sustainability runs throughout our operations.



## Aluminium and mesh



**Project:** Microsoft, Dublin

**Material:** Aluminium Alucovering

**Architect:** RKD Architects





## Aluminium and mesh



**Project:** Quinn Business School, Dublin

**Material:** Aluminium Alucovering

**Architect:** RKD Architects



## Aluminium and mesh



**Project:** Edge Lane, Liverpool

**Material:** Aluminium Alucovering

**Architect:** AEW







Aluminium and mesh



**Project:** B&Q, Liverpool

**Material:** Aluminium Alucovering

**Architect:** AEW





## Aluminium and mesh



**Project:** Central Manchester University Hospitals  
NHS Foundation Trust

**Material:** Expanded Mesh

**Architect:** Sheppard Robson





## Aluminium and mesh



**Project:** Baltic Yard, Liverpool

**Material:** Alucovering corten

**Architect:** Tim Groom Architects





## Aluminium and mesh



**Project:** Uxbridge College, Middlesex

**Material:** Aluminium Alucovering

**Architect:** HNW Architects







## Aluminium and mesh



**Project:** Oldham Leisure Centre

**Material:** Aluminium Alucovering

**Architect:** GT Architects







## Aluminium and mesh



**Project:** Merano, London

**Material:** Expanded Mesh

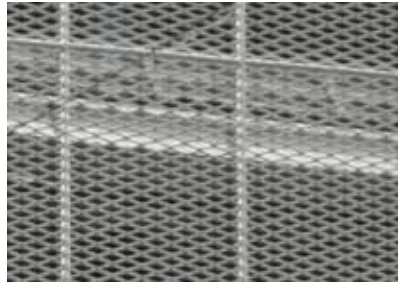
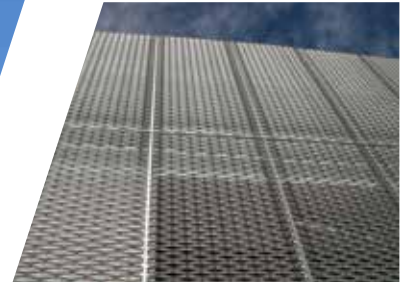
**Architects:** Rogers Stirk Harbour + Partners (main architect), EPR Architects, Gillespies Architects, Jo Cowen Architects







## Aluminium and mesh



**Project:** Plymouth City College

**Material:** Expanded Mesh

**Architect:** Atkins







## Aluminium and mesh



**Project:** The Glandore Centre (Oncology), Cork

**Material:** Aluminium Alucovering

**Architect:** MCA Architect



# Ceramic



**Project:** Rathbone Market, London

**Material:** Ceramic

**Architect:** CZWG





# Ceramic



**Project:** Royal Victoria Hospital Care Unit, Belfast

**Material:** Ceramic

**Architect:** Capita Percy Thomas



# Ceramic



**Project:** Winter Gardens, Weston-super-Mare

**Materials:** Ceramic and EWI

**Architect:** View Architects





# Ceramic



**Project:** Brighton Marina

**Materials:** Ceramic and EWI

**Architect:** Acanthus LW Architects





# Ceramic



**Project:** Newbury Racecourse

**Material:** Ceramic with Hydrotec nano technology

**Architect:** Roberts Limbrick Architects







Stone



**Project:** Vita student accommodation, Newcastle

**Material:** Stone

**Architect:** Fuse



Station  
Cathedral

St. Nicholas' Cathedral  
Bigg Market  
Theatre Royal  
Tyne Bridge  
Quayside



Stone



**Project:** Southampton New Arts Complex

**Material:** Stone

**Architect:** CZWG Architects LLP







Stone



**Project:** Oasis Residence Cookbridge, Leeds

**Material:** Sandstone

**Architect:** Brewster Bye Architects







Stone



**Project:** West Village student accommodation, Glasgow

**Material:** Stone

**Architect:** Falconer Chester Hall







Stone



**Project:** Great Western Road, Glasgow

**Material:** Stone

**Architect:** Elder and Cannon Architects







Stone



**Project:** Elliott House, Edinburgh

**Material:** Aliva Air stone

**Architect:** 3DReid







Stone



**Project:** University of Southampton  
Boldrewood Campus

**Material:** Facade support system and stone

**Architect:** Grimshaw Architects







Stone



**Project:** Polden Corner, Bath

**Material:** Stone

**Architect:** Stride Treglown Architects







Stone



**Project:** Woolwich Civic Offices, London

**Material:** Facade support system and stone

**Architect:** HLM Architects



# Terracotta



**Project:** Cardiff University Business School

**Material:** Grescovering

**Architect:** Boyes Rees Architects





# Terracotta



**Project:** Elm House, Brighton

**Material:** 3D white terracotta tiled ceramic veil

**Architect:** Hassell





# Terracotta



**Project:** Chapel Riverside, Southampton

**Material:** Grescovering

**Architect:** Inland Homes and Nathaniel Lichfield & Partners





# Terracotta



**Project:** University of Bath

**Material:** Grescovering

**Architect:** Stride Treglown Architects





Terracotta



**Project:** The Codeworks, Stockport

**Materials:** Grescovering and stone

**Architect:** Edge Architects







Glass



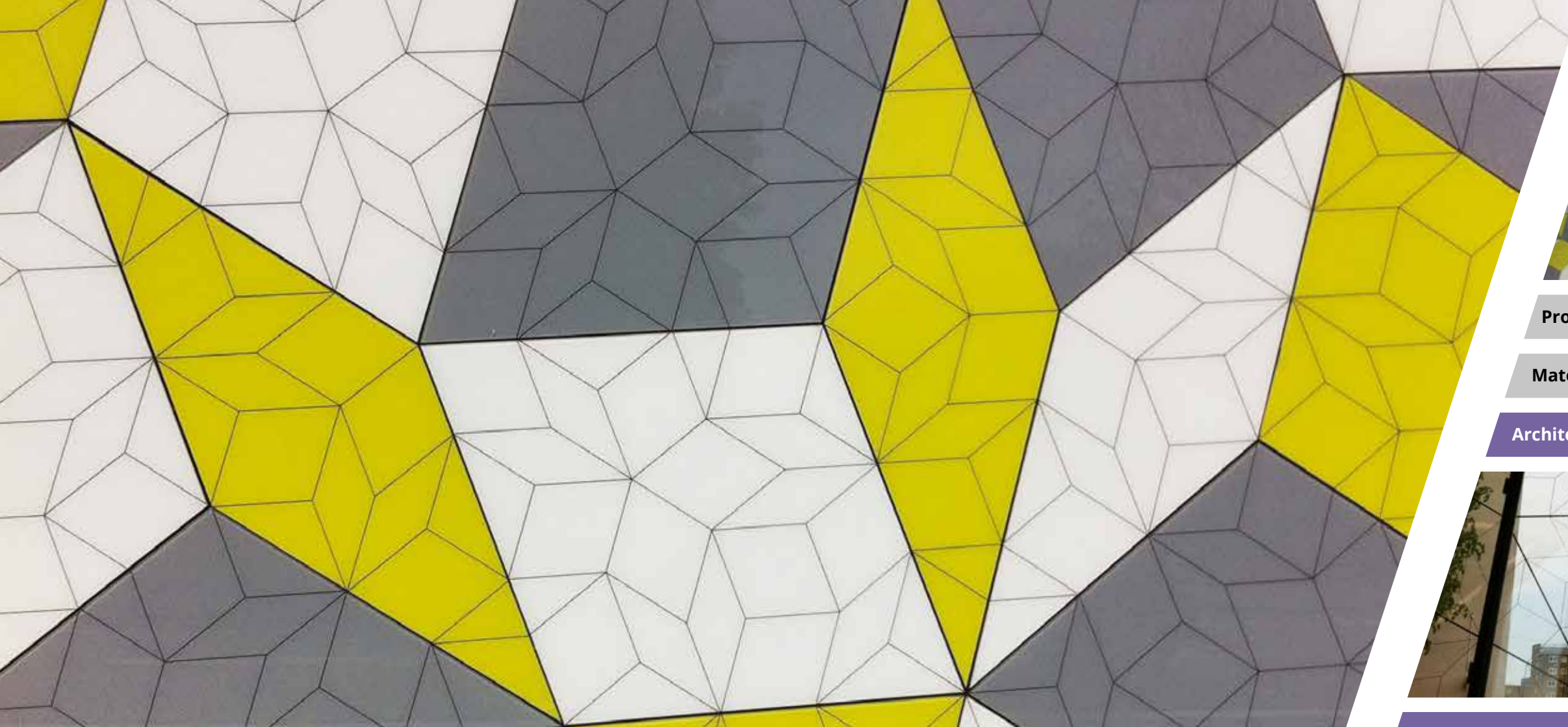
**Project:** British Antarctic Survey, Cambridge

**Material:** Glass

**Architect:** ADP







Glass



**Project:** Queen Mary University of London

**Material:** Glass

**Architect:** WilkinsonEyre







Glass



**Project:** Matchmakers Wharf, London

**Material:** Glass

**Architect:** Stockwool







Glass



**Project:** Granta Park, Cambridge

**Material:** Glass

**Architect:** Aukett Swanke





# EWI with brick slips



**Project:** Avon Point, Bristol

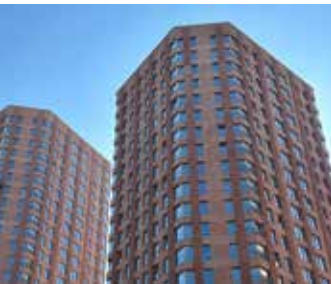
**Material:** EWI with clay slips

**Architect:** Hadfield Cawkwell Davidson





## EWI with brick slips



**Project:** Leeds II, Leeds

**Material:** EWI with clay slips

**Architect:** Carey Jones Chapman Tolcher





## EWI with brick slips



**Project:** St. Vincents Place, Sheffield

**Material:** EWI with clay slips

**Architect:** Hadfield Cawkwell Davidson





## EWI with brick slips



**Project:** Hayloft Point, London

**Materials:** EWI with clay slips and stone

**Architect:** Hadfield Cawkwell Davidson





## EWI with brick slips



**Project:** Morriss House, Nottingham

**Materials:** EWI with clay slips and stone

**Architect:** Hadfield Cawkwell Davidson





## EWI with brick slips



**Project:** Campbell House, Bristol

**Material:** EWI with clay slips

**Architect:** DMWR





## EWI with brick slips



**Project:** Bromley Place, Nottingham

**Materials:** EWI with clay slips and stone

**Architect:** Hadfield Cawkwell Davidson





## EWI with brick slips



**Project:** Hove Gardens, Brighton

**Materials:** EWI with clay slips, EWI with ceramic slips, stone and aluminium

**Architect:** Carey Jones Chapman Tolcher





## EWI with brick slips



**Project:** Swan House, Manchester

**Material:** EWI with clay slips

**Architect:** SimpsonHaugh





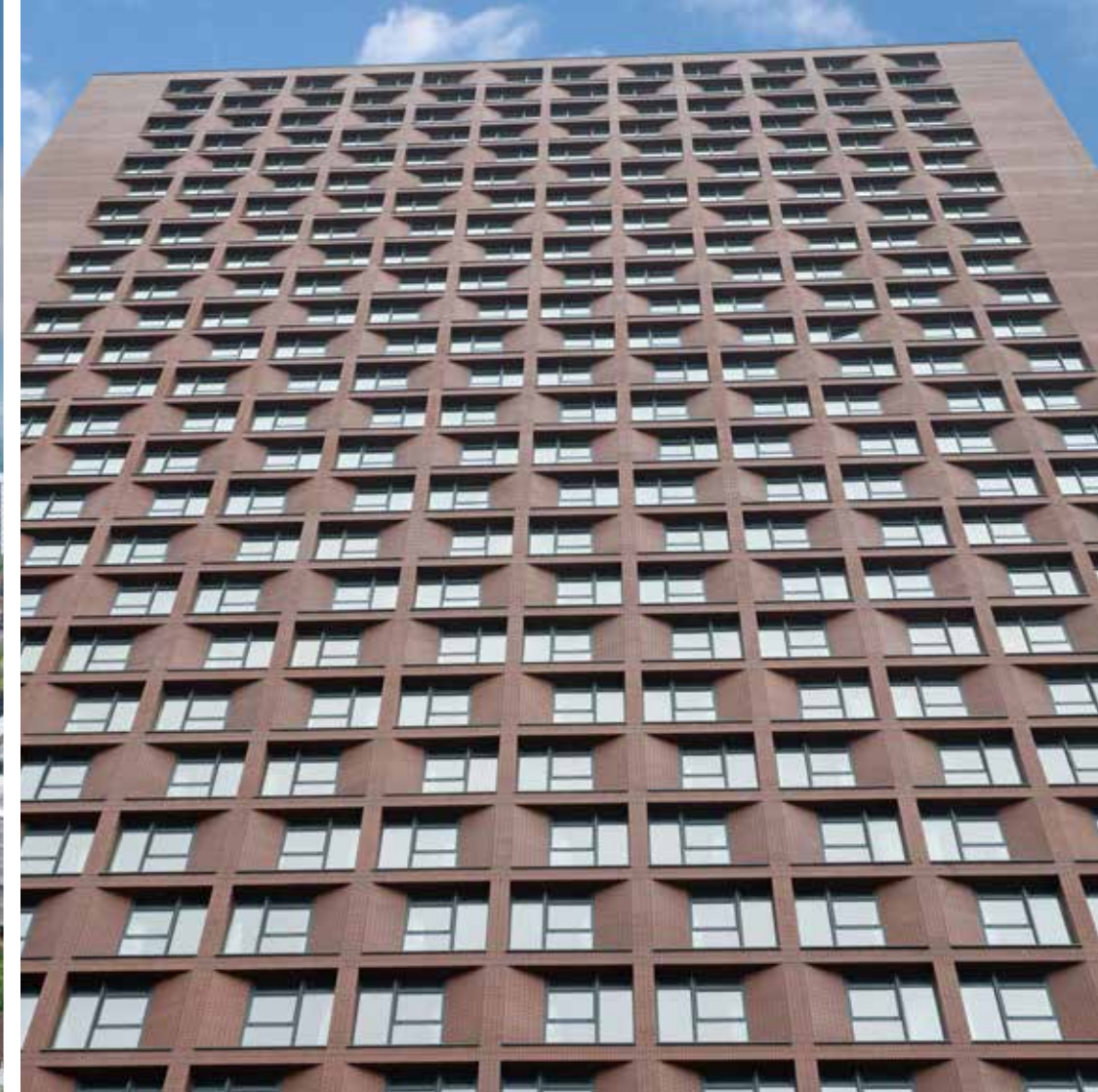
## EWI with brick slips



**Project:** Cortland Broad St, Birmingham

**Material:** EWI with clay slips

**Architect:** Corstorphine + Wright





EWI with brick slips



**Project:** Trafford Plaza, Urban Green, Manchester

**Material:** EWI with clay slips

**Architect:** Studio KMA





## EWI with brick slips



**Project:** The Laundry, London

**Material:** EWI with clay slips

**Architect:** Alan Camp Architects





## EWI with brick slips



**Project:** Park Lane, Leeds

**Material:** EWI with clay slips

**Architect:** DAY Architectural





## EWI with brick slips



**Project:** Wythenshawe Community Housing Group

**Material:** EWI with clay slips

**Architect:** HUB Architecture





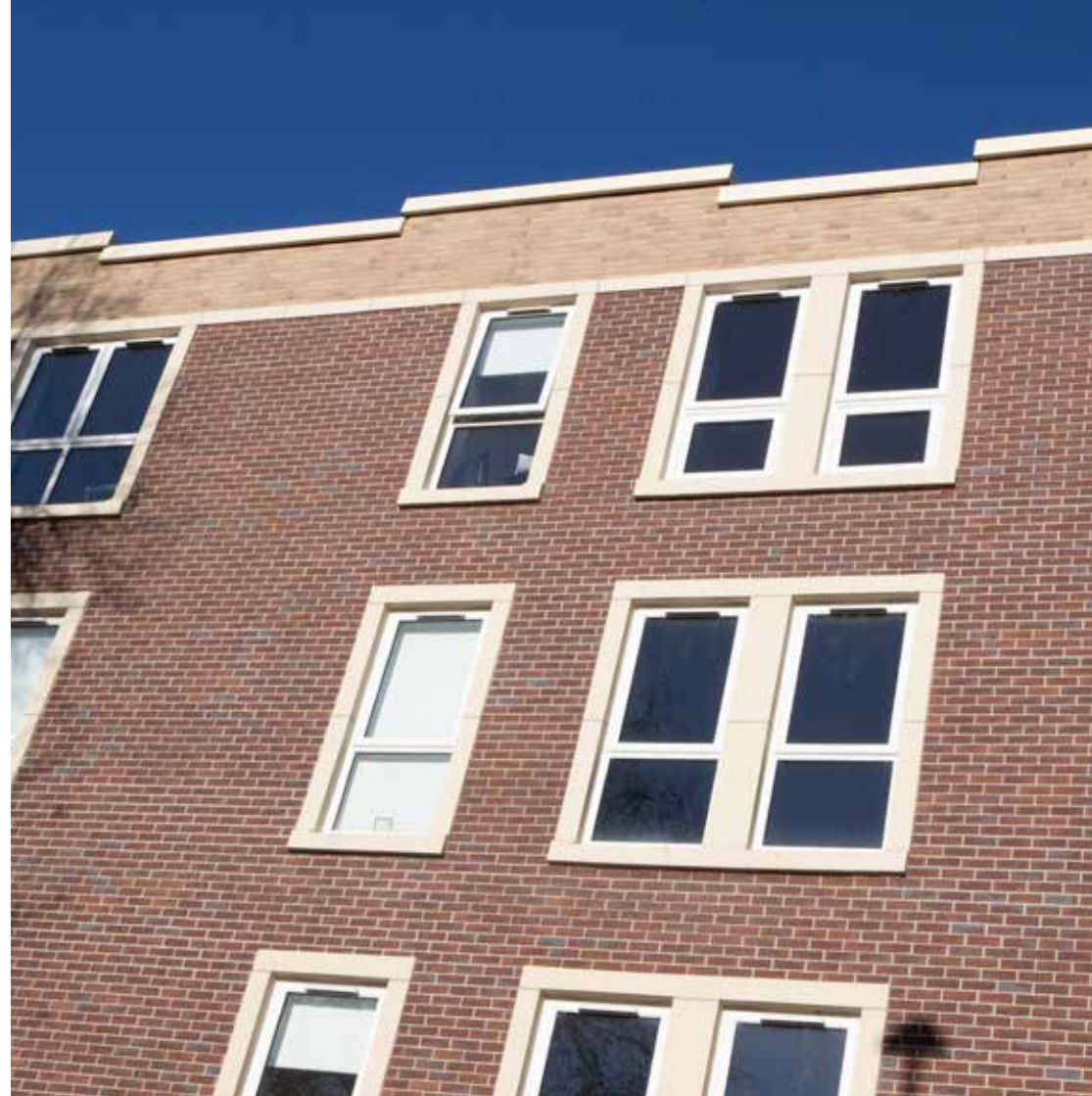
## EWI with brick slips



**Project:** Palmyra House, Warrington

**Material:** EWI with lightweight slips

**Architect:** Whiteley Eaves





## EWI with brick slips



**Project:** Crosby Gardens, Sefton

**Material:** EWI with lightweight slips

**Architect:** Falconer Chester Hall





## EWI with brick slips



**Project:** 33 Parkside, Coventry

**Material:** EWI with lightweight slips

**Architect:** O'Connell East





## EWI with brick slips



**Project:** Baltic View, Liverpool

**Material:** EWI with lightweight slips

**Architect:** Brock Carmichael





## EWI with brick slips



**Project:** Wade House, ForViva, Salford

**Material:** EWI with lightweight slips

**Architect:** Halsall Lloyd Partnership





## EWI with brick slips



**Project:** Leven Hotel, Manchester

**Materials:** EWI with ceramic slips and aluminium

**Architect:** Halliday Meecham Architects





## EWI with brick slips



**Project:** Boulevard Hotel, Blackpool

**Material:** EWI with stone slips

**Architect:** Allison Pike







EWI



**Project:** Money Penny, Wrexham

**Materials:** EWI and aluminium

**Architect:** AEW Architects







**Project:** Bloc Hotel, Gatwick

**Material:** STRONG EWI

**Architect:** Scott Brownrigg







**Project:** Knight Dragon, Greenwich

**Material:** EWI

**Architect:** Jestico + Whiles







**Project:** Fabrick House, Cheadle

**Material:** EWI rainscreen and lightweight slips

**Architect:** Falconer Chester Hall







EWI



**Project:** Holy Trinity Academy, Telford

**Material:** EWI

**Architect:** FaulknerBrowns Architects







EWI



**Project:** Ercall Wood Technology School, Telford

**Material:** EWI

**Architect:** FaulknerBrowns Architects







EWI



**Project:** Holiday Inn Express, Aberdeen

**Material:** EWI

**Architect:** Urban Innovations







EWI



**Project:** College Croft, ForViva, Salford

**Material:** EWI

**Architect:** Halsall Lloyd Partnership





## EWI texture design effects



### CORTEN

A texture that finds inspiration in the oxidation of iron and metals offering a glossy, uneven and natural patinated rust effect for the surfaces.





## EWI texture design effects



### WASHED CEMENT

A finish that gives the appearance of a delicately aged concrete, giving the building a contemporary style with a smooth, velvety effect.





EWI texture design effects



## BRUSHED CONCRETE

Interprets the material texture of industrial microcement, with tone-on-tone chromatic variations and the appearance of a strong, powerful and lasting substance on surfaces.



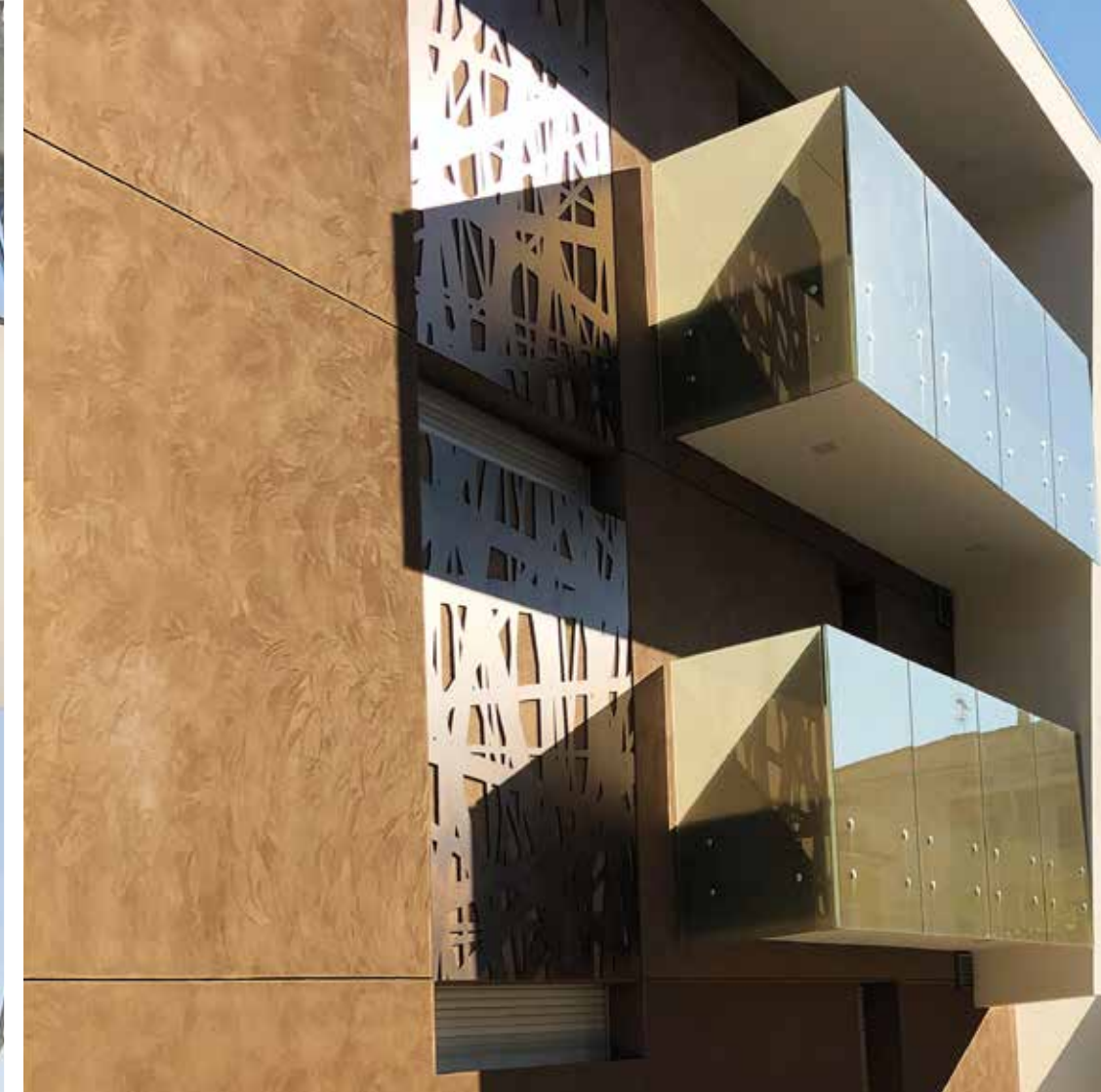


## EWI texture design effects



### URBAN

Represents thick metropolitan-inspired textures perfect for personalising facade design and enhancing the creativity of designers and decorators.



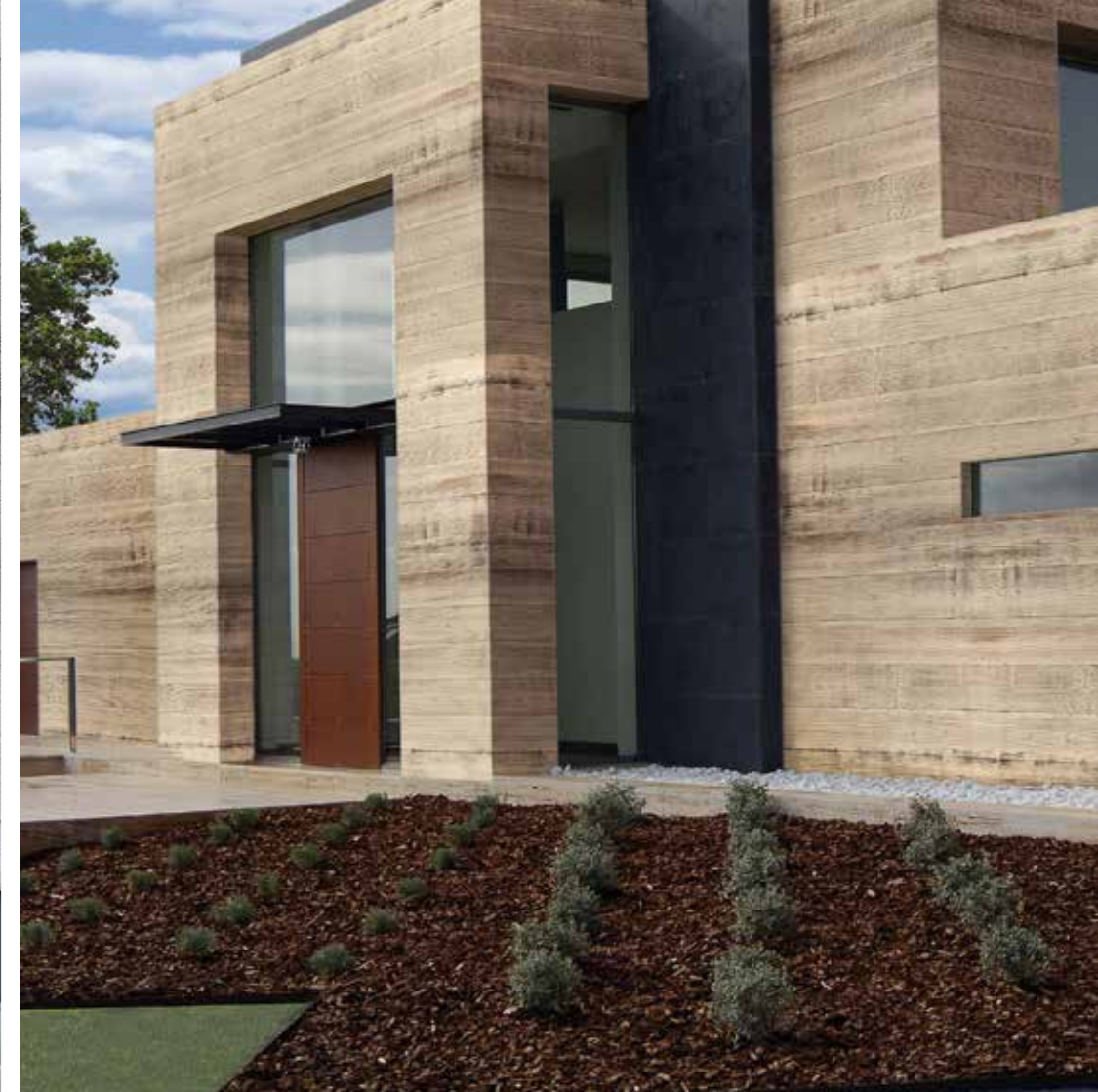


## EWI texture design effects



### WOOD

A wood effect reflects the colours, density and texture of the veins in wood, making this finish a highly customisable coating for architects inspired by the forces of nature.





## EWI texture design effects

### TRAVERTINO

Defines the texture of Italian limestone rocks and the aesthetic of ancient Rome by transposing on the facade the places, the history and the substance of a timeless material.





## EWI texture design effects



### STREAKED

An effect that animates the facade architecture, streaked is a three-dimensional material enhanced by its shadow effects. Here, light sculpts the texture creating monochromatic contrasts.





## EWI texture design effects

### CRUSHED

Inspired by the aesthetic of the humble eggshell: homogeneous, silky, levelled but slightly woven. Elegant and refined, this effect can act both as a smooth finish and as a thick base for high-tech finishes: self-cleaning photocatalytic (clean technology) or a hydrophobic barrier effect (dry technology).





EWI texture design effects



## MATT AND GLITTERY SANDBLASTED

Inspired by sand dunes shaped by the wind, this finish alternates refined light and dark shades with delicate reliefs.

This effect adds to the Matt Sandblasted texture with small crystals of light delicately inserted on a refined sandy mantle.





## International projects



**Project:** Prada, Las Vegas

**Material:** Modular system of cast aluminium panels

**Architect:** Baciocchi





## International projects



**Project:** New York Subway

**Materials:** Structural anodised aluminium alloy and porcelain tiles

**Architect:** AECOM - Arup







## International projects



**Project:** San Marino, Italy

**Materials:** Stone and customised aluminium

**Architect:** OneWorks





## International projects



**Project:** La Scala, Milan

**Material:** Stone

**Architect:** Mario Botta







## International projects



**Project:** Google, Seattle

**Material:** Aluminium

**Architect:** NBBJ







## International projects



**Project:** Polo Ricettivo, Italy

**Material:** Ceramic

**Architect:** Leonardo Togni







## International projects



**Project:** Masaryk Centre, Prague

**Material:** GRC

**Architects:** Zaha Hadid Architects and Jakub Cigler Architects



Dako GRC



## International projects



**Project:** Palace Trnitá, Prague

**Material:** GRC

**Architect:** Pelčák a Partner Architects



Dako GRC



## International projects



**Project:** Illuster, Uster

**Material:** GRC

**Architect:** Baumschlager Eberle Architects



Dako GRC





## International projects



**Project:** Vision Apartments Glattbrugg, Zurich

**Material:** GRC

**Architect:** Architect Urben Seyboth AG



Dako GRC



## International projects



**Project:** WH Siedlung Muniwis-Fahrweid, Switzerland

**Material:** EWI with ceramic slips

**Architect:** Ken Architekten





From a small painting business Ferruccio Colonna founded IVAS in 1953.



THE COLONNA FAMILY

