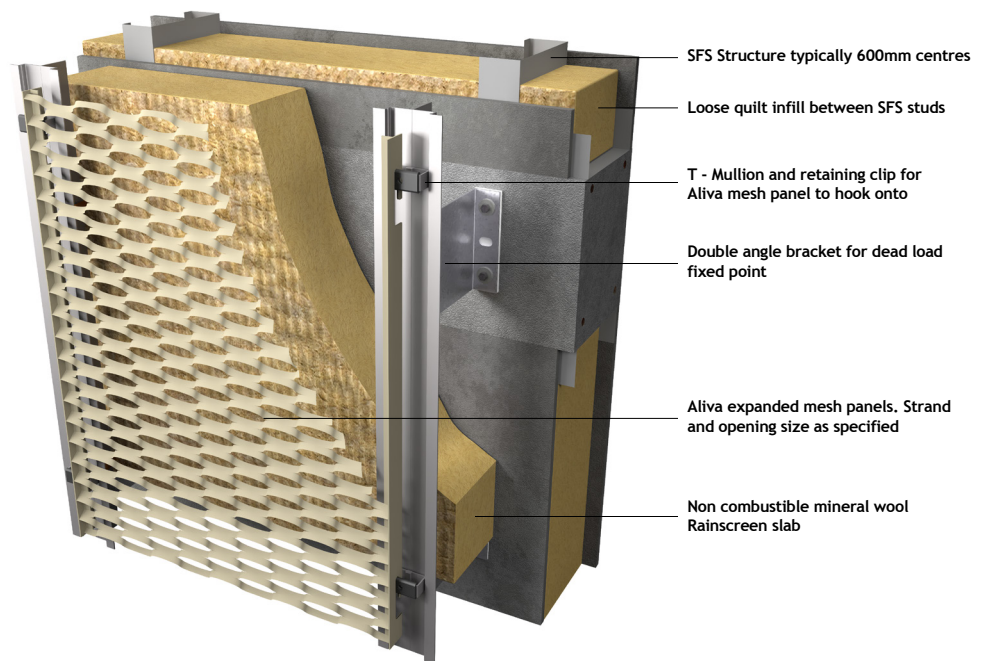


# SYSTEM DATA SHEET



## DESCRIPTION

Aliva Mesh.covering is a facade system that incorporates Aliva's expanded mesh panels and substructure system for external wall build ups. The system, in aluminium extruded alloy, consists of U brackets, vertical mullions and horizontal profiles, which support Aliva's mesh panel facade. The mesh facade panels are secured by means of a secret fix hook on mechanism or through fixing via folded flanges. The mesh panels are available in a number of finishes, colours and textures including durable powder coating and anodised. Various strand sizes, weave types and open area configurations are available to the project specifier.

## TECHNICAL PROPERTIES



### Fixing Method:

Typically fixed to Lightweight Steel Frame through the weathering Cement Particle Board, or can be used in a single skin application, alternatively concrete structures using specified Mechanical fixings. For fixing into concrete and similar substrates pull out tests should be undertaken.

Main mullion extrusions are connected back to deadload and sliding brackets to form a substrate to accurate installation tolerances, to allow inward and outward adjustment, to support the mesh facade panels.

Frames around the mesh can be secret fix hook on or be through fix via a flanged edge.

Insulation may be incorporated to provide the required thermal performance and this dictates the depth of the deadload and sliding brackets where used. However, the usual use for mesh is for decorative or plant screening.



### Design Life:

The system when installed to Specification will achieve a Design Life of in excess of 30 years subject to material finishes.



### Fire Classification:

A1 to BS EN 13501-1;2019  
Surface spread of flame subject to specified finish.