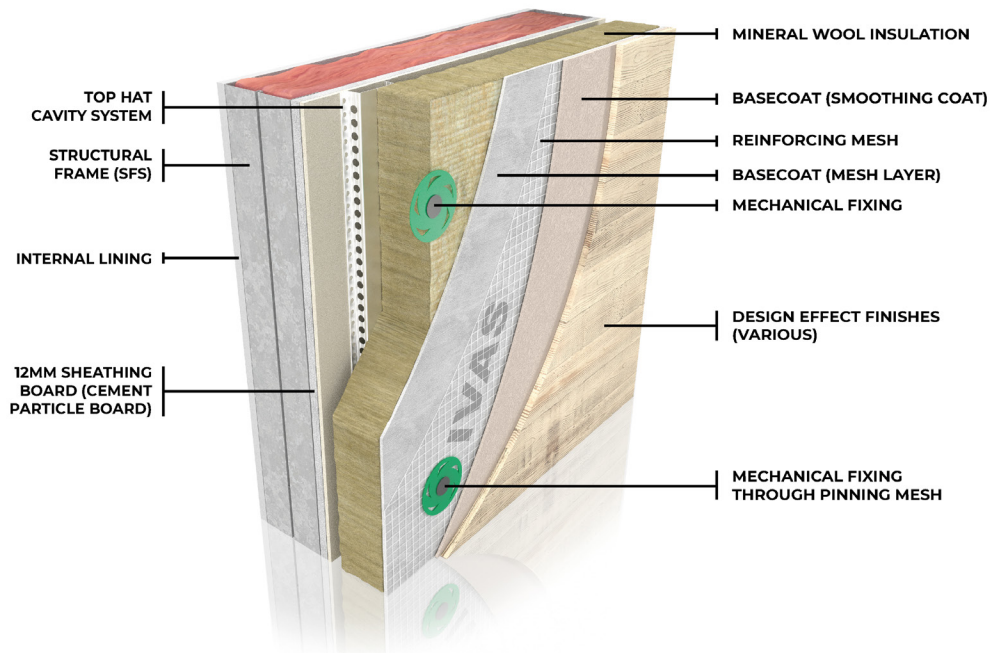


SYSTEM DATA SHEET



DESCRIPTION

The AlivaDesign M system consists of Mineral Wool Insulation boards which are mechanically fixed into steel top hat rails which are mechanically fixed into the Sheathed Lightweight Steel Frame supporting wall. A layer of basecoat with reinforcement mesh is applied to the mechanically fixed insulation boards and the finishes applied. The system is then finished with a decorative finish with silicone and acrylic properties to replicate various traditional finishes such as Corten Steel, Brushed Concrete, Travertine Tiles and Timber Panelling.

APPROVED SUBSTRATES

Lightweight Steel Frames with Cement or Calcium Silicate sheathing boards.

TECHNICAL PROPERTIES



Fixing Method:

Directly fixed with Mechanical fixings via 15mm steel 'Top Hat' channel to create cavity.



Design Life:

The system when installed to Specification will achieve a Design Life of in excess of 30 years.



Application Method:

Materials are supplied in single components to site to be installed by an Approved Installation Contractor. Insulation in 600x1200mm boards to the required thickness, powdered goods are supplied in 25kg bags for site mixing, mesh is supplied in roll form, fixings and washers are supplied in boxes, beads and trims in boxes/lengths and pre-formed slips, corner pistols, stretcher headers etc are supplied in boxes or plastic wraps. The system is hand applied to the substrate provided by an Approved Installation Contractor.



Fire Classification:

A2, s1, d0 to BS EN 13501-1:2019 Surface Spread of Flame.



Accreditation/Certification:

KIWA BDA Certified Ref: BAW-24-317-S-A-UK.