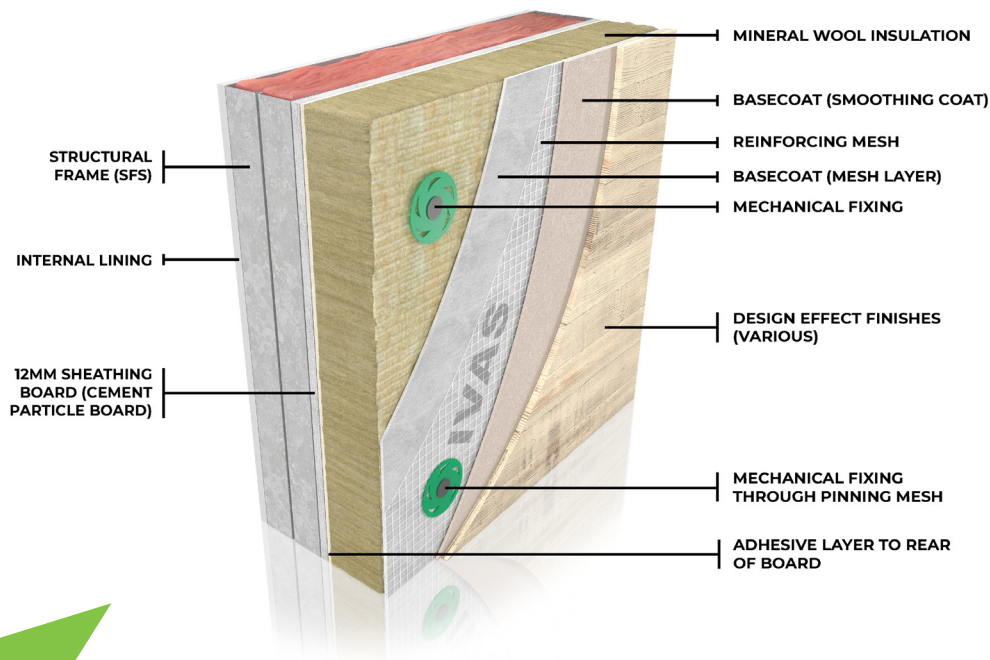
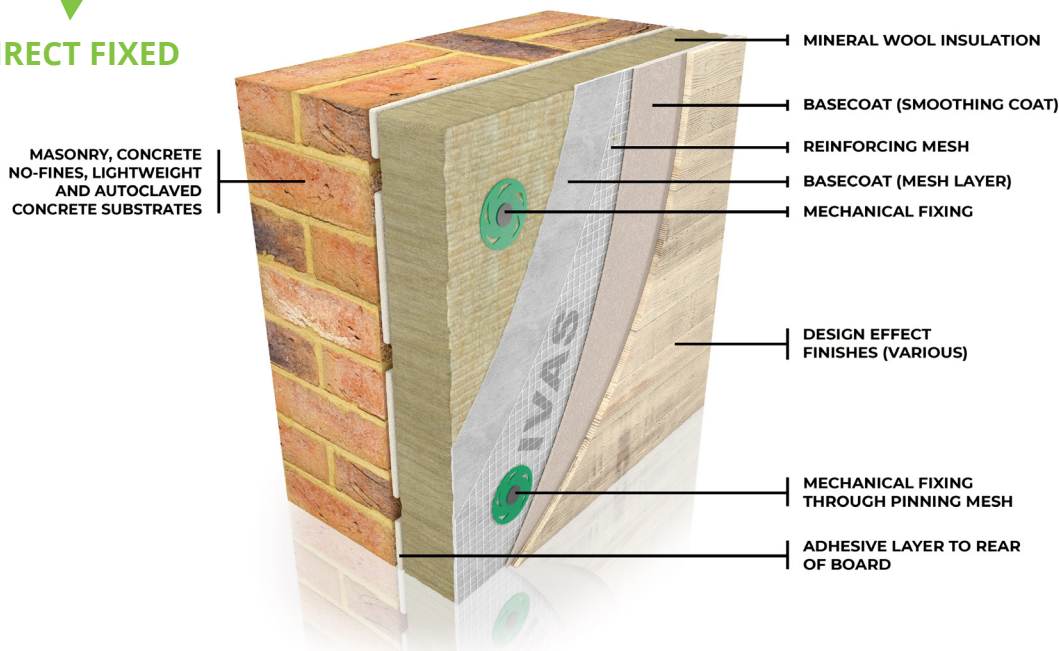


SYSTEM DATA SHEET



LWSF and Sheathing Boards

DIRECT FIXED



Masonry, Concrete, Blockwork, Aerated Block and No-Fines

DESCRIPTION

The AlivaDesign M system consists of Mineral Wool Insulation boards which are mechanically and adhesively fixed to either sheathed Light Gauge Steel Frame or Masonry, Concrete, block or No-Fines supporting walls. A layer of basecoat with reinforcement mesh is applied to the mechanically fixed insulation boards and the insulation and finishes applied. The system is then finished with a decorative finish with silicone and acrylic properties to replicate various traditional finishes such as Corten Steel, Brushed Concrete, Travertine Tiles and Timber Panelling.

APPROVED SUBSTRATES

Lightweight Steel Frames with Cement or Calcium Silicate sheathing boards.

Masonry, Concrete, Blockwork, Aerated Block and No-Fines Concrete.

TECHNICAL PROPERTIES



Fixing Method:

Mechanical fixed with supplementary adhesive.

OR

Adhesively fixed with supplementary mechanical fixings.



Design Life:

The system when installed to Specification will achieve a Design Life of in excess of 30 years.



Fire Classification:

A2, s1, d0 to BS EN 13501-1:2019
Surface Spread of Flame.



Application Method:

Hand applied. Individual components delivered to site for installation directly to the wall. Insulation boards, fixings and accessories, powdered items for site mixing with paints supplied in 25kg tubs. All goods delivered in palletised form.



Accreditation/Certification:

KIWA BDA Certified Ref: BAW-24-316-S-A-UK.

- Lightweight Steel Frames with Cement or Calcium Silicate sheathing board substrates.



BBA Certified Ref: 11/4841
Product Sheet 4.

- Masonry, Concrete, Blockwork, Aerated Block and No-Fines Concrete.