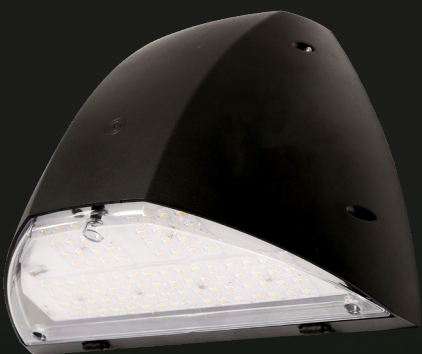




The Brighter Choice



# BALTIMORE

Affordable. Robust. Flexible.



# BALTIMORE

## Powerful and Reliable

### Outdoor lighting with the BALTIMORE wall pack

BALTIMORE combines superior efficiency with rugged durability, offering CCT & wattage selectability and an IP65 rating for reliable performance in all weather conditions. Its asymmetric light distribution ensures even coverage for building entrances, perimeters, and walkways.

Built for the toughest environments, BALTIMORE's polycarbonate construction and IK10 impact resistance guarantee long-lasting performance. Perfect for commercial exteriors, this versatile light fitting delivers the power and durability you need to light up your outdoor spaces with ease.



#### Cost-effective efficiency

Achieving a perfect balance of cost-effectiveness and performance, BALTIMORE is crafted with a durable polycarbonate base and back, delivering an impressive 145 lumens per watt (lm/W).



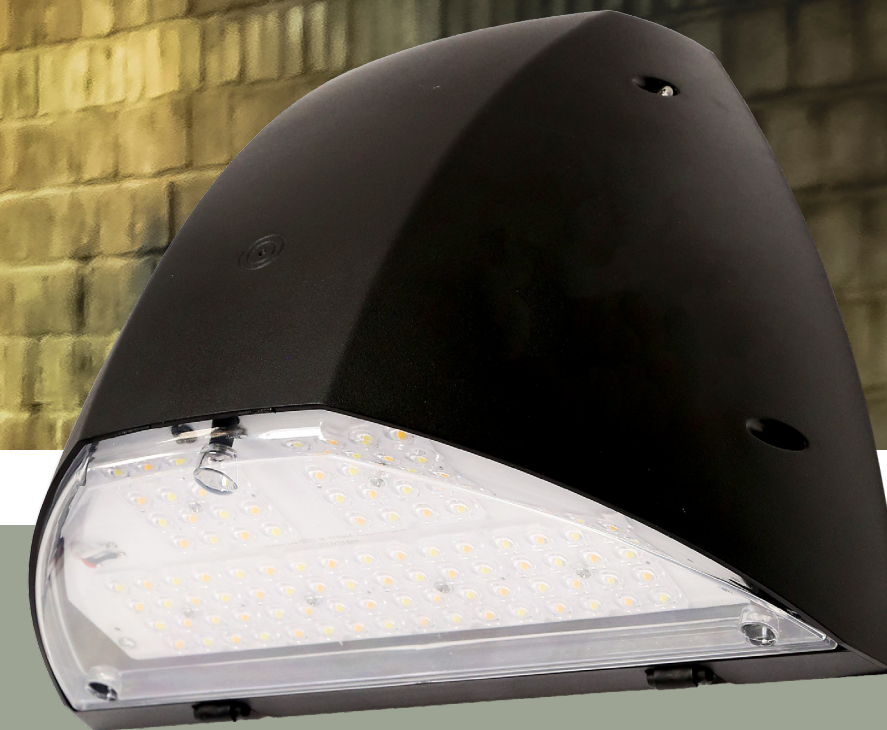
#### Robust

The BALTIMORE wallpack is IP65 and IK10 rated, providing exceptional protection against the harsh weather conditions and backed by 5 years warranty.



#### Easy installation

Designed with a rear-hinged mechanism, BALTIMORE ensures effortless access for both maintenance and installation.



#### Asymmetric light throw

Optimised LED lenses are designed to direct more light towards the floor, illuminating a larger, more usable area.

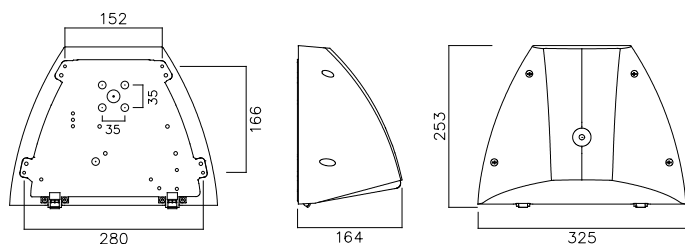
#### CCT switchable

Choose between 3000K for optimal wildlife care, 4000K for natural light, or 6000K for enhanced visibility, offering versatility for different environments.

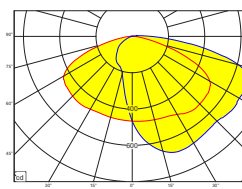
#### Multi-wattage options

BALTIMORE offers adjustable wattage to tailor the light output, providing flexibility for both higher and lower installation settings.

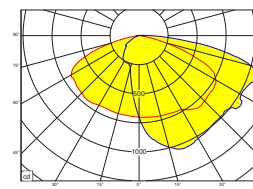
ORDER CODE	POWER (W)	LUMENS (lm)	EFFICACY (l.m/c.W)	SENSOR	EMERGENCY	CRI	CCT (K)
NBM16-24/830-40-60	16 / 24	2298 / 3260	145 / 136			>80	3000-4000-6000
NBM16-24/M3L/830-40-60	16 / 24	2298 / 3260	145 / 136		M3L	>80	3000-4000-6000
NBM16-24/PEC/830-40-60	16 / 24	2298 / 3260	145 / 136	Photocell		>80	3000-4000-6000
NBM16-24/PEC/M3L/830-40-60	16 / 24	2298 / 3260	145 / 136	Photocell	M3L	>80	3000-4000-6000



16W



24W



SCAN QR CODE  
TO DOWNLOAD  
CATALOGUE PAGE



NVC LIGHTING LTD

NVC Park 201, Hollymoor Way, Rubery, Birmingham, B31 5HE UK

+44 (0)121 457 6340 | sales@nvcuk.com | www.nvcuk.com

