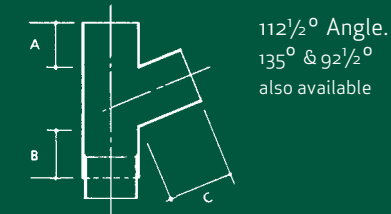


Flush Fit Downpipes Round & Square

DATA SHEET

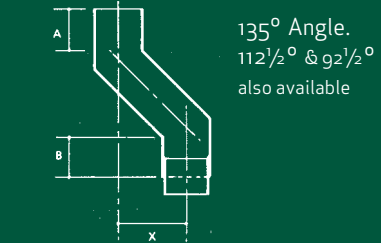
Single branch

	SIZE		
	72x72	102x76	102x102
A	100	100	100
B	100	100	100
C	100	100	100



One piece offset (for plinth)

	SIZE		
	72x72	102x76	102x102
A	100	100	100
B	100	100	100
C	100	100	100
X FOR ALL SIZES	45, 75, 100, 125, 150		



Rodding access pipe

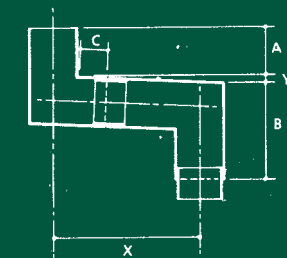
	SIZE		
	72x72	102x76	102x102
A	300	300	300
B	163	163	163



Two piece offset – 92 1/2 degrees

ANGLE	SIZE		
	72x72	102x76	102x102
A	100	100	100
B	169	173	198
C	60	60	60

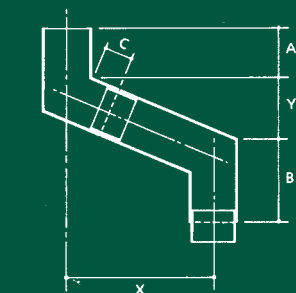
X	300	500	1000
Y	13	22	44



Two piece offset – 112 1/2 degrees

ANGLE	SIZE		
	72x72	102x76	102x102
A	100	100	100
B	148	157	168
C	60	60	60

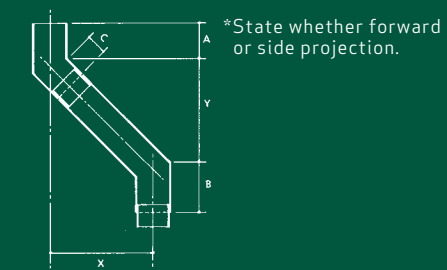
X	300	500	1000
Y	124	207	414



Two piece offset – 135 degrees

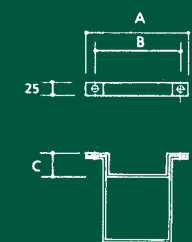
ANGLE	SIZE		
	72x72	102x76	102x102
A	100	100	100
B	130	131	142
C	60	60	60

X	300	500	1000
Y	300	500	1000



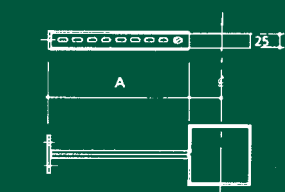
Pipe bracket

	SIZE		
	72x72	102x76	102x102
A	158	188	188
B	118	148	148
C FOR ALL SIZES	3, 16, 25, 50		

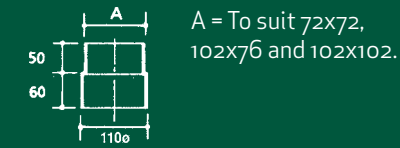


Extension bracket

	SIZE		
	72x72	102x76	102x102
A	Adjustable for all sizes from 50 to 250		



Square-to-round adaptor



Description

Bailey downpipes are available in two distinctive architectural ranges: Traditional and Flush-Fit. They are extruded in heavy grade aluminium to provide a robust product suitable for all building applications.

The Flush-Fit Range with its concealed spigot jointing and minimalistic bracket fixing, offers a sleek, unobtrusive system for contemporary buildings.

Downpipes are supplied as standard ppc in a choice of over 200 standard colours, giving a long maintenance free life.

A vandal-resistant, anti-climb option can be specified by selecting the Flush-Fit, square downpipe with concealed-fix brackets.

Details of all standard components are shown below, but purpose made options are available for those 'one-off' situations.

Specifying Information

- Type:** Bailey Flush-Fit extruded aluminium downpipes.
- Profile:** To be round/square/rectangular.
- Size:** Select from tables overleaf.
- Thickness:** Select from tables overleaf.
- Jointing:** Push fit connections using internal spigots between lengths and components, giving a seamless appearance.
- Fixing:** By means of pipe brackets securely plugged to brickwork with 50 x 10 stainless steel screws with coloured plastic caps as supplied by the manufacturer, at 1500mm centres.
- Offsets:** One piece/two piece offsets.
Projection: Select from tables overleaf.
Angle: 135/112 1/2 / 92 1/2 degrees
- Accessories:** Square to round adaptors for drain connection, rodding access, hopper heads, etc, as required.
- Finish:** To be polyester powder coated to colour and gloss level selected from the Bailey range. (Consult Technical Department) Coating to be applied at manufacturer's in-house plant with 30 year guarantee available, subject to location.

Fixing Instructions

To be installed strictly in accordance with the manufacturer's instruction sheet available on request and sent out with each consignment.