

BAILEY
eaves systems

Bailey Atlantic
Monsoon Gutter
Installation
Instructions

Contents

1.1	Introduction	2
1.2	Site Handling	3
1.3	Essential Tools.....	3
2.0	The System.....	3
3.0	Jointing.....	4
4.0	Corners.....	Error! Bookmark not defined.
5.0	Stop Ends.....	Error! Bookmark not defined.
6.0	Outlets.....	Error! Bookmark not defined.

1.1 Introduction

Bailey Atlantic Monsoon Gutter System



The Bailey Atlantic Monsoon gutter is a composite system, consisting of Bailey Atlantic TPOE membrane permanently bonded to a galvanized steel sheet (or other material).

The Bailey Atlantic Monsoon gutter can be incorporated in a Bailey Atlantic Roofing project, a complete Bailey Eaves System or as a stand-alone gutter.

If followed closely, the following fixing procedures will ensure a long and trouble free life for the gutter system.

1.2 Site Handling

Bailey Atlantic Monsoon Gutter is delivered on shrunk wrapped pallets. When a pallet has been opened, any rolls should be stored vertically on a dry, level surface and kept clean at all times.

Components and fixings should be removed to a more secure and drier location.

All deliveries should be checked against delivery notes upon receipt.

1.3 Essential Tools

- (a) Shears/Hacksaw/Jigsaw
- (b) 4.8mm HSS drill
- (c) Pop Riveter
- (d) Hot Air Gun
- (e) Seam Roller
- (f) Probe
- (g) Hole Saw

2.0 The System

Bailey Atlantic Monsoon gutters are supplied pre-formed in 3m long lengths. The lengths of gutter must be supported on an adequate bracketing system as supplied by Bailey Eaves Systems or can be laid to continuous boarding or framework by others. The jointing of lengths together is by means of an external butt strap, riveted to the gutter to hold it in place and is made watertight by the application of a strip of Atlantic membrane heat-welded to both sections of gutter.

Corners, stop ends and outlets are supplied prefabricated as separate components for ease of site installation.

Operatives should attend a Bailey Atlantic Monsoon Gutter training course, before carrying out installation of the Bailey Atlantic Monsoon gutter system.

Please call our Technical Dept on **01403 261844** to book an appointment or E-mail [**sales@baileyeaves.com**](mailto:sales@baileyeaves.com)

3.0 Jointing

The lengths of Bailey Atlantic Monsoon gutter are laid in place and an external joint strap applied to the outside. The lengths are mechanically fixed together, using 4.8 diameter pop rivets, at maximum 150mm centres, with a minimum of three per gutter.

The joints should be free from debris and it is not normally necessary to clean the joint before applying the membrane. In extreme conditions dirt should be removed with clean water and the gutter allowed to dry before sealing.

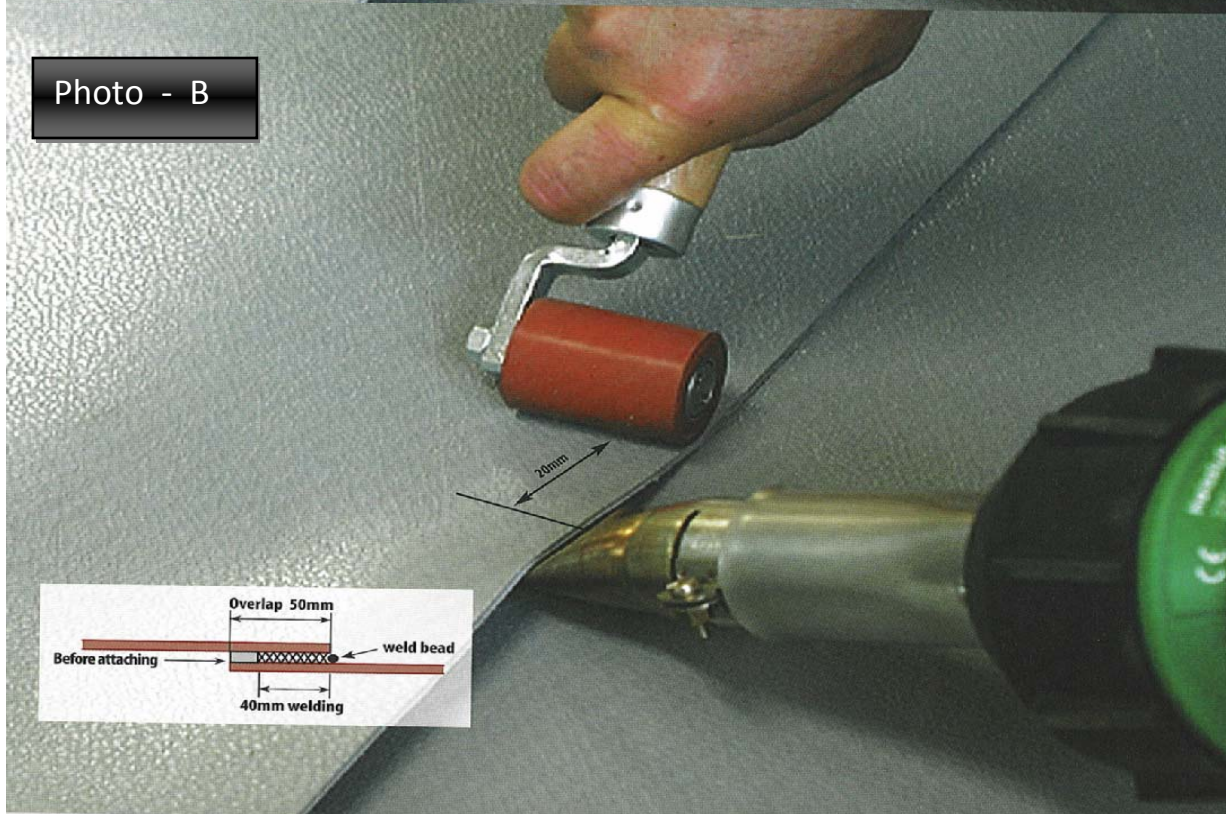
A strip of 142mm wide Bailey Atlantic membrane is cut to the approximate length (equivalent to the girth of the gutter) and heat-welded to both sides of the gutter.

Every length is to be sealed with hot air. Welding is to be carried out using a hand-held gun with temperature set between 500-600°C, depending on the ambient temperature.

The membrane joint strip is to be tacked in place, approximately 40mm from each edge.
(See Page 6 – Photo A)

The remaining 40mm is welded by continuously moving the gun and roller together. A small bead will be obtained, indicating that the weld has been carried out correctly. (See Page 6 – Photo B)

Special attention should be taken to ensure that no bird-mouthing occurs.



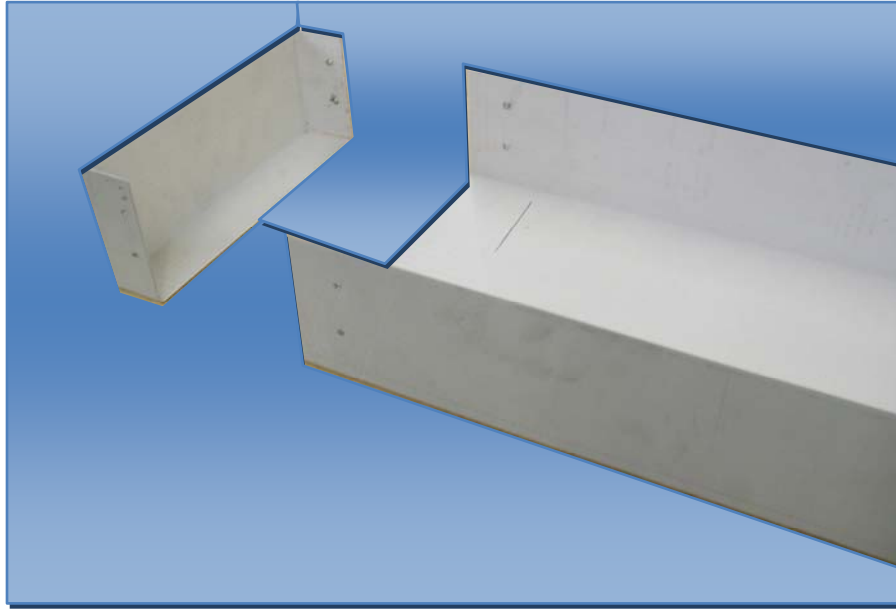
4.0 Corners

Corners are supplied as prefabricated components and are jointed to the lengths of gutter in the same manner as lengths are fixed to each other.

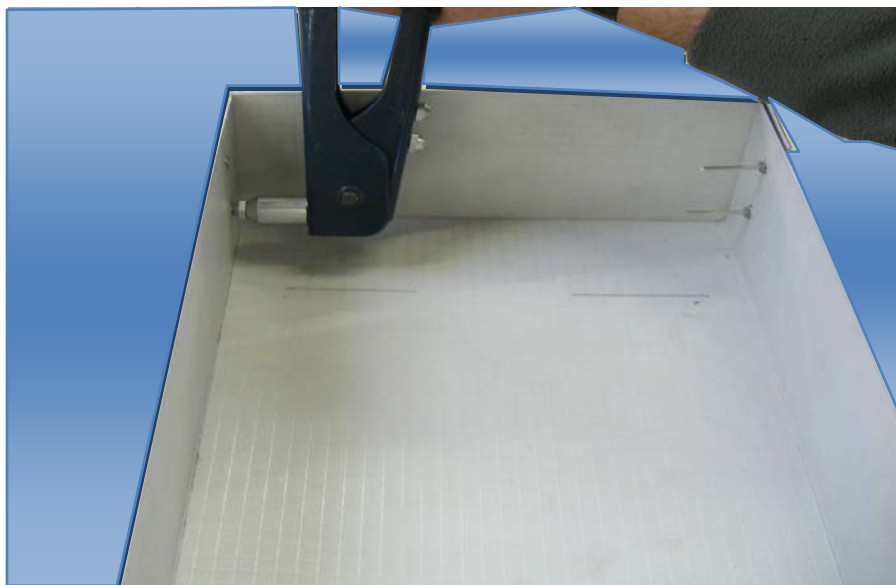


5.0 Stop Ends

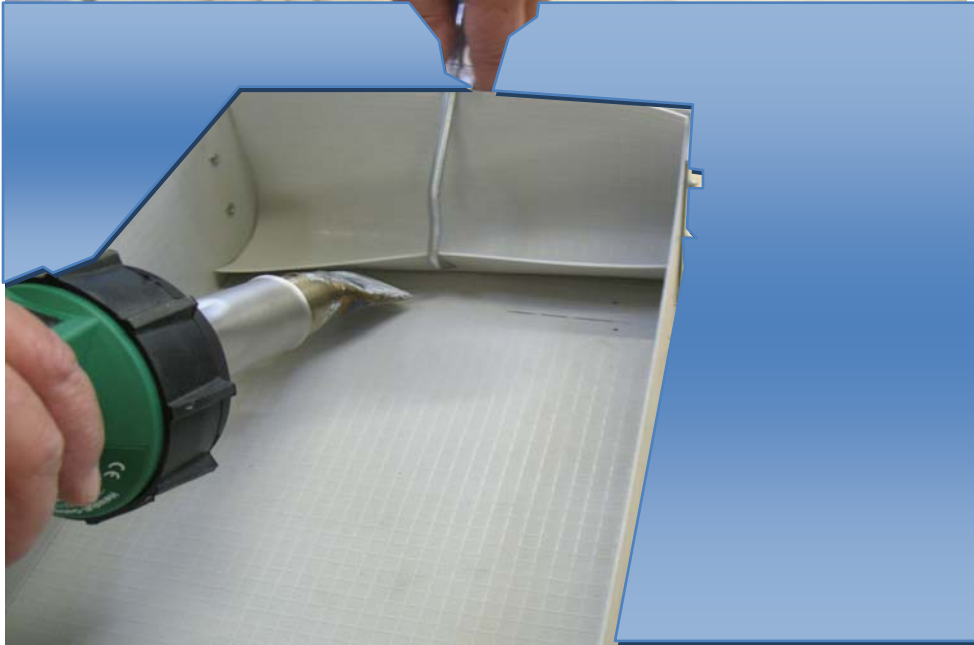
Stop ends are supplied as semi-prefabricated components which require weathering, by hot air welding.



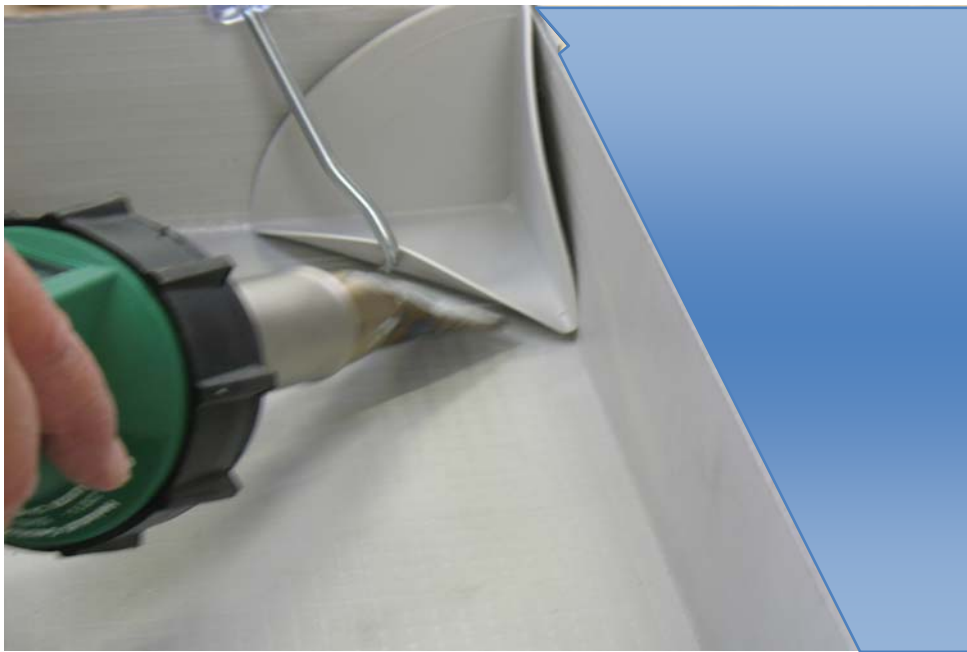
The stop end fits on the outside of the gutter and is mechanically fixed using 4.8 diameter pot rivets, as per the gutter



A strip of membrane is applied in between the sides of the gutter and vertically up the stop end.

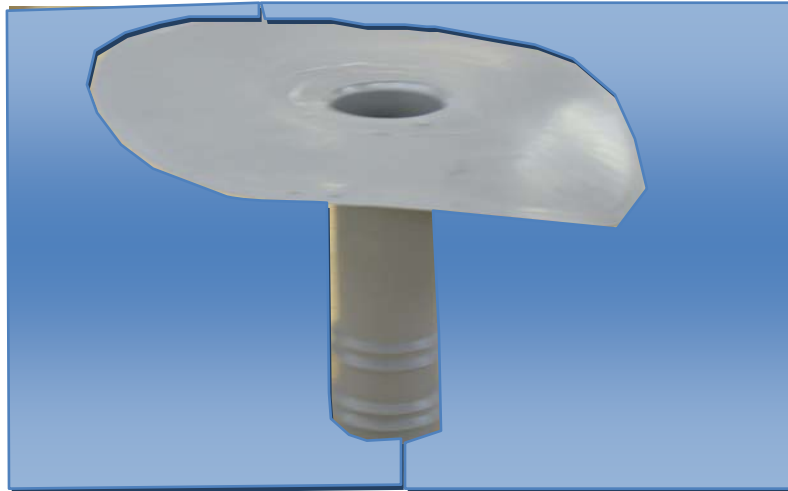


A performed Atlantic membrane internal corner patch is welded to each corner of the stop end.



6.0 Outlets

Outlets are supplied as prefabricated Bailey Atlantic components for ease of site installation.
(They may vary from the one shown.)



The position of the outlets should be accurately marked in the gutter and then a hole cut through for the size of the spigot.



The Bailey Atlantic outlet is inserted through the hole and joined by hot air welding to the gutter. It is necessary to crease the outlet flanges, before installation, so that the outlet can be installed correctly into the gutter.

