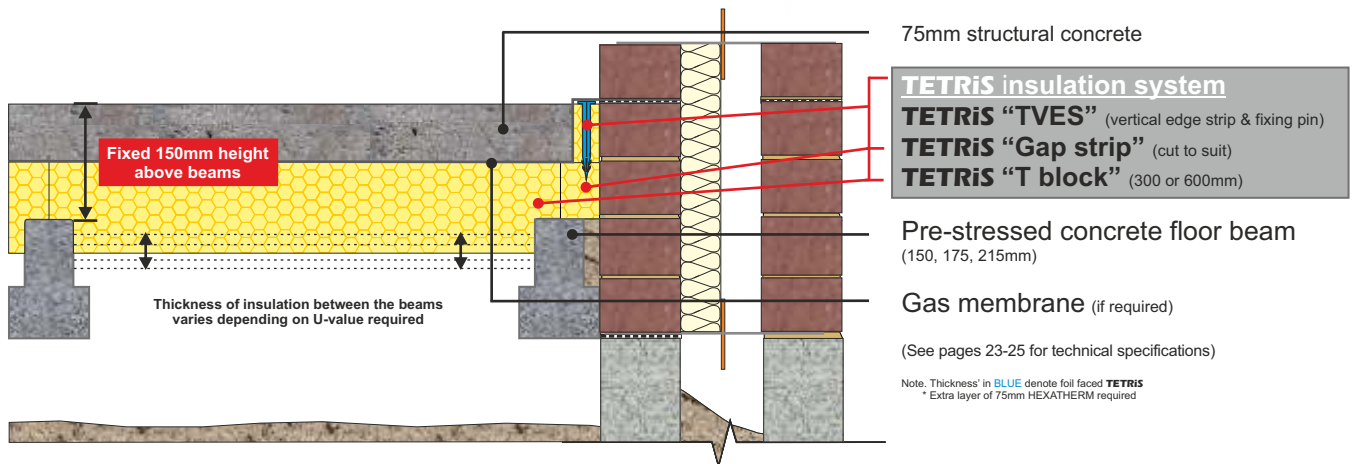


Insulation blocks installed above and between pre-stressed concrete beams. Structural concrete finish



FASTRACKCAD
ARCHITECTURAL CAD DATABASES

nbsPlus

FASTRACKBIM
ARCHITECTURAL BIM DATABASES

PRODUCT INFORMATION

TETRIS®

Suspended ground floor insulation floor system

TETRIS® is designed to provide outstanding thermal and structural performance. The insulation blocks **sit on** and **between** standard pre-stressed concrete floor beams and is finished with a structural concrete topping.

PRODUCT BENEFITS

- ✓ U-values as low as 0.10 W/m²K achievable
- ✓ A+ Green Guide rated system
- ✓ Quicker and easier to install than a beam & block floor system
- ✓ Produces a floor with zero cold bridges
- ✓ CSH Pol 1 compliant
- ✓ 100% recyclable

PHYSICAL PROPERTIES

		Grade			
		250	300	500	700
Thermal Conductivity	≤60mm	0.035	0.035	0.035	0.034
BS EN 12667 (W/mK)	≥70mm	-	0.035	0.035	0.036
Compressive strength		250	300	500	700
BS EN 826		kPa	kPa	kPa	kPa
Compressive strength		80	125	180	250
BS EN 1606		kPa	kPa	kPa	kPa
Long term water absorption by immersion	BS EN 12087	0.7%	0.7%	0.7%	0.7%
Temperature range		-50/+75 °C	-50/+75 °C	-50/+75 °C	-50/+75 °C
Board size (mm)		600 x 2500	600 x 2500	600 x 1250	600 x 1250
Thickness' (mm)	(other sizes manufactured to order)	20 25 30	40 50 60 75 80 100 120 140 160	50 60 75 80 100 120 140 160	50 60 80 100 120 140 160
Edge profile					

(A) Excluding XFLOOR 500

TYPICAL THICKNESS OF INSULATION REQUIRED

P/A ratio	TETRIS (mm)								
0.7	90	110	125	150	165	150	165	150	
0.6	90	110	120	140	160	140	160	140	
0.5	75	100	110	130	150	130	150	130	
0.4	75	90	100	120	140	120	140	120	
0.3	60	75	90	110	130	110	130	110	
	0.25	0.22	0.20	0.18	0.16	0.14	0.12	0.10	
	U-value (W/m ² K)								
	<small>Calculated in accordance with ISO 13370</small>								

THIRD PARTY ACCREDITATION & APPROVALS

STANDARDS

EN 13164: 2012

ISO 9001 - Quality management system (QMS)

ISO 14001 - Environmental management system (EMS)



ENVIRONMENTAL CREDENTIALS



CODE FOR SUSTAINABLE HOMES

The following Code for Sustainable Homes credits are obtainable as a result of incorporating **HEXATHERM** into the construction detailed.

Pol 1		Mat 1	
	HEXATHERM XPS boards (A)	Element N°	820100034
GWP value	<5	Green Guide rating	D
Code credits	1	Code credits	1

Note. Pol.1 Code credits have an approximate weighted value of 0.7

Note. Mat 1 Code credits have an approximate weighted value of 0.3