



Brochure of CAD Drawings

Triton Systems

Units 3 - 5 Crayford Commercial Centre, Greyhound Way, Crayford, Kent. DA1 4HF

Telephone: **01322 318830**

Email: info@tritonsystems.co.uk

Fax:

Web:

01322 524017

www.tritonsystems.co.uk

Main Index

- Section 1 - Existing Basements**
- Section 2 - New Build Basements**
- Section 3 - Insulated Concrete Formwork**
- Section 4 - Steel Intensive Basements (Sheet Piled Walls)**
- Section 5 - Fixing/Sealing Details**
- Section 6 - Concrete Waterproofing**
- Section 7 - Green Roofs**
- Section 8 - Gas Barriers (Radon, Methane, CO²)**
- Section 9 - Damp & Timber**
- Section 10 - Flood Resilience**

Section 1 - Existing Basements - Index

- IP 002.1** - Typical Wall/Floor Detailing Below Ground
- IP 012.1** - Internal Membrane to Walls - Triton Triseal to Floors
- IP 013.1** - Typical Sump/Pump/Aquachannel and Membrane Installation
- IP 024.1** - Drainage Options to Reinforced Concrete Floors
- IP 025.1** - Flat Soffits
- IP 029.1** - Sump Installation Options
- TT 009.1** - Internal Cavity Drain to New Concrete/Brickwork
- IP 034.1** - Platon Membrane to Underpinning Detail



www.tritonsystems.co.uk

Triton Systems

Units 3 - 5 Crayford Commercial Centre
Greyhound Way, Crayford, Kent. DA1 4HF

Telephone: **01322 318830**

Fax: **01322 524017**

Email: info@tritonsystems.co.uk

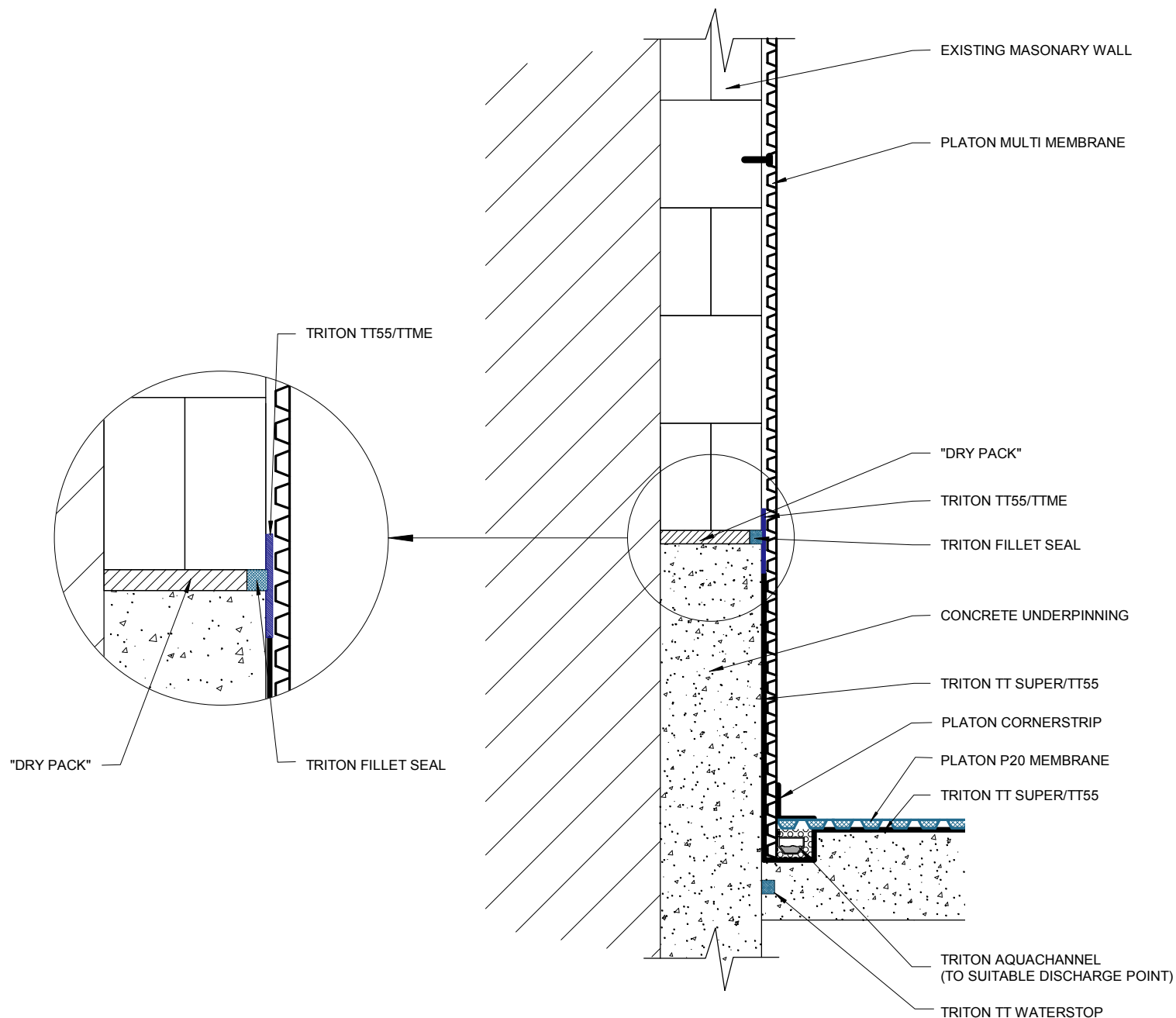
Web: www.tritonsystems.co.uk

THIS DRAWING IS THE PROPERTY OF TRITON SYSTEMS AND MUST NOT BE LOANED OR COPIED WITHOUT PRIOR WRITTEN CONSENT

© 2011 TRITON SYSTEMS

NOTE

ALL INSTALLATION TO BE CARRIED OUT IN STRICT ACCORDANCE WITH MANUFACTURERS INSTALLATION INSTRUCTIONS. FOR FURTHER ASSISTANCE CONTACT **TRITON TECHNICAL** ON THE TELEPHONE NUMBER ABOVE.



REV.	MOD. BY	DATE	CHK. BY	APP. BY

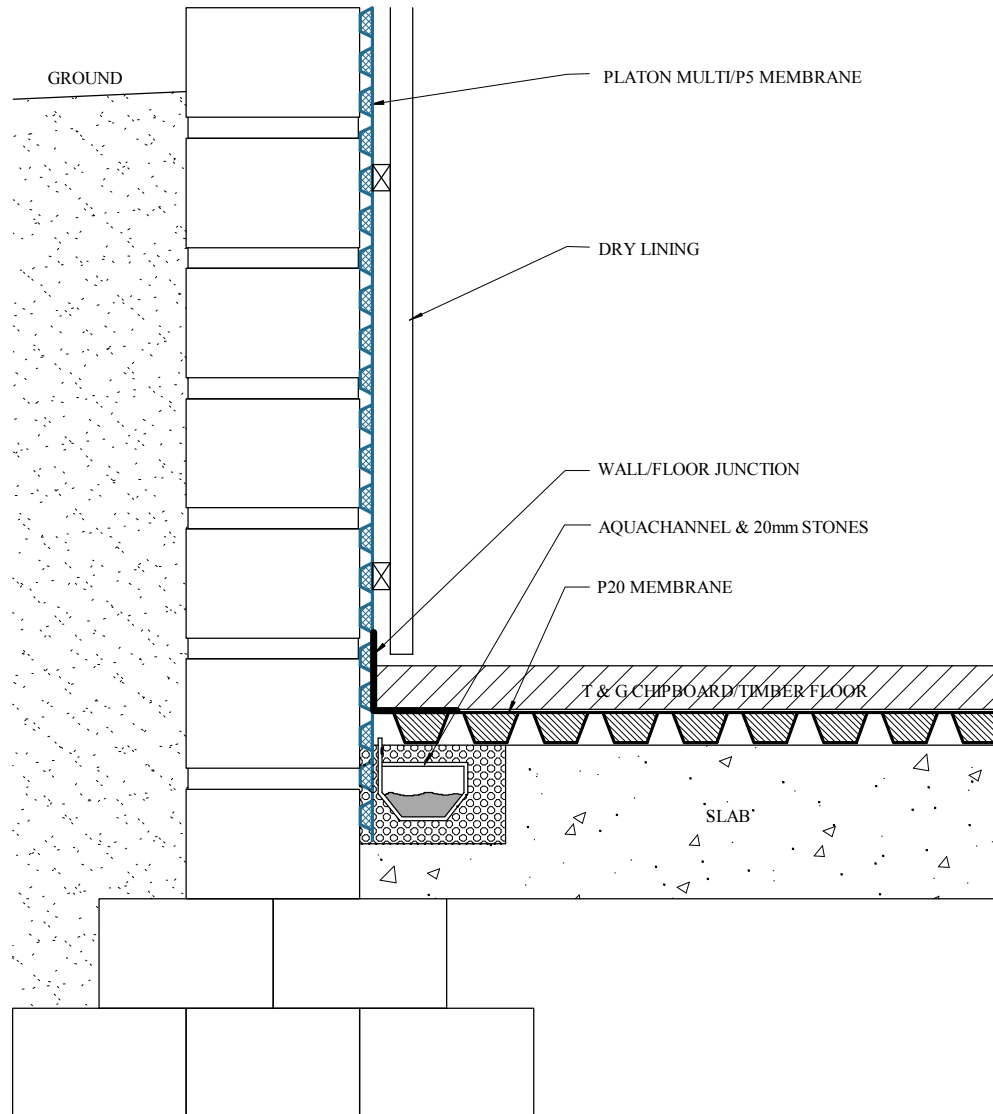
Alterations

TITLE:

Platon Membrane
To Underpinning Detail

DRG. No. IP 034.1 **REV** 2

DRAWN	JDF, CBS	System Files: IP034-1(2).pdf IP034-1(2).dwg
DATE	4th July 2008	
SCALE (A3)	Not To Scale	
CHECKED		
APPROVED		



www.tritonsystems.co.uk

Triton Systems

Units 3 - 5 Crayford Commercial Centre
Greyhound Way, Crayford, Kent. DA1 4HF

Telephone: **01322 318830**

Fax: **01322 524017**

Email: info@tritonsystems.co.uk

Web: www.tritonsystems.co.uk

THIS DRAWING IS THE PROPERTY OF TRITON SYSTEMS AND MUST NOT BE LOANED OR COPIED WITHOUT PRIOR WRITTEN CONSENT

© 2011 TRITON SYSTEMS

NOTE

ALL INSTALLATION TO BE CARRIED OUT IN STRICT ACCORDANCE WITH MANUFACTURERS INSTALLATION INSTRUCTIONS. FOR FURTHER ASSISTANCE CONTACT **TRITON TECHNICAL** ON THE TELEPHONE NUMBER ABOVE.

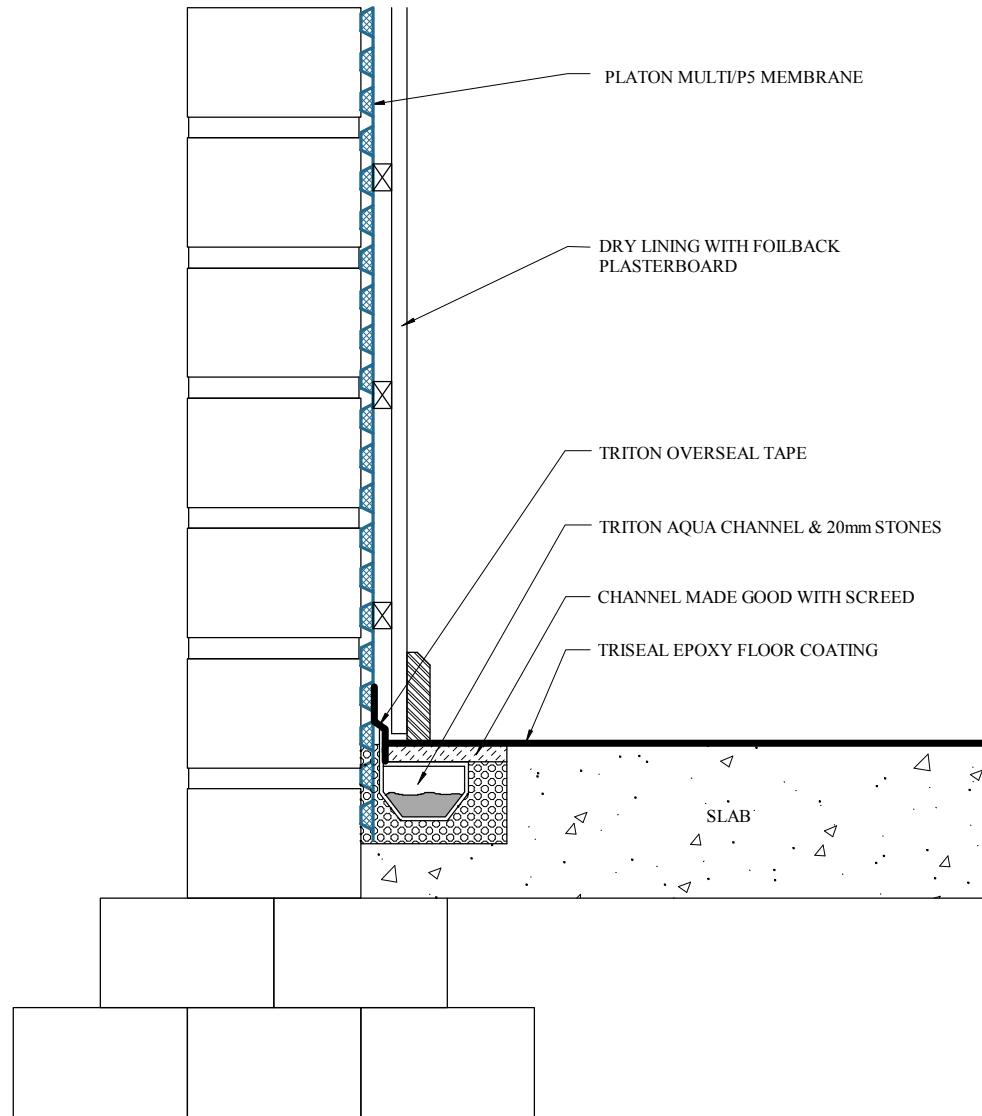
REV.	MOD. BY	DATE	CHK. BY	APP. BY
Alterations				

TITLE:

Typical Wall/Floor Detail
Below Ground

DRG. No.	IP 002.1	REV	2
-----------------	----------	------------	---

DRAWN	JDF, CBS	System Files: IP002-1(2).pdf IP002-1(2).dwg
DATE	12th October 2006	
SCALE (A3)	Not To Scale	
CHECKED		
APPROVED		



TRITON

www.tritonsystems.co.uk

Triton Systems

Units 3 - 5 Crayford Commercial Centre
Greyhound Way, Crayford, Kent. DA1 4HF

Telephone: **01322 318830**

Fax: **01322 524017**

Email: info@tritonsystems.co.uk

Web: www.tritonsystems.co.uk

THIS DRAWING IS THE PROPERTY OF TRITON SYSTEMS AND MUST NOT
BE LOANED OR COPIED WITHOUT PRIOR WRITTEN CONSENT

© 2011 TRITON SYSTEMS

NOTE

ALL INSTALLATION TO BE CARRIED OUT IN STRICT ACCORDANCE WITH
MANUFACTURERS INSTALLATION INSTRUCTIONS. FOR FURTHER
ASSISTANCE CONTACT **TRITON TECHNICAL** ON THE TELEPHONE
NUMBER ABOVE.

REV.	MOD. BY	DATE	CHK. BY	APP. BY

Alterations

TITLE:

Platon Membrane & Aqua Channel
With Triseal Epoxy Floor Finish

DRG. No.

IP 012.1

REV

2

DRAWN	JDF, CBS	System Files: IP012-1(2).pdf IP012-1(2).dwg
DATE	20th October 2006	
SCALE (A3)	Not To Scale	
CHECKED		
APPROVED		



www.tritonsystems.co.uk

Triton Systems

Units 3 - 5 Crayford Commercial Centre
Greyhound Way, Crayford, Kent. DA1 4HF

Telephone: **01322 318830**

Fax: **01322 524017**

Email: info@tritonsystems.co.uk

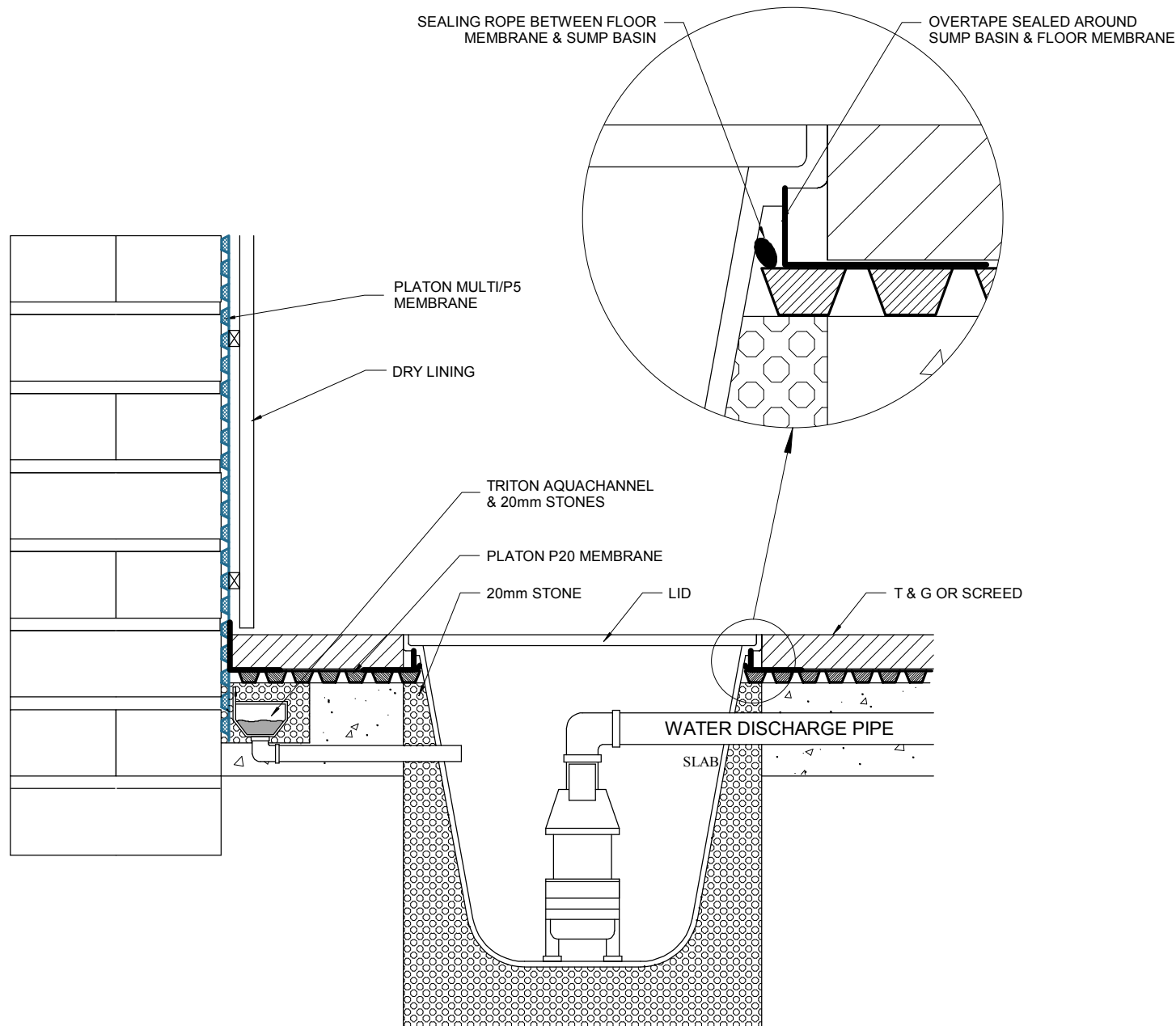
Web: www.tritonsystems.co.uk

THIS DRAWING IS THE PROPERTY OF TRITON SYSTEMS AND MUST NOT BE LOANED OR COPIED WITHOUT PRIOR WRITTEN CONSENT

© 2011 TRITON SYSTEMS

NOTE

ALL INSTALLATION TO BE CARRIED OUT IN STRICT ACCORDANCE WITH MANUFACTURERS INSTALLATION INSTRUCTIONS. FOR FURTHER ASSISTANCE CONTACT **TRITON TECHNICAL** ON THE TELEPHONE NUMBER ABOVE.



REV.	MOD. BY	DATE	CHK. BY	APP. BY

Alterations

TITLE:

Typical Sump Pump Detail
Including Channel & Membranes

DRG. No.

IP 013.1

REV

2

DRAWN	JDF, CBS	System Files:
DATE	20th October 2006	
SCALE (A3)	Not To Scale	IP013-1(2).pdf IP013-1(2).dwg
CHECKED		
APPROVED		



www.tritonsystems.co.uk

Triton Systems

Units 3 - 5 Crayford Commercial Centre
Greyhound Way, Crayford, Kent. DA1 4HF

Telephone: **01322 318830**

Fax: **01322 524017**

Email: info@tritonsystems.co.uk

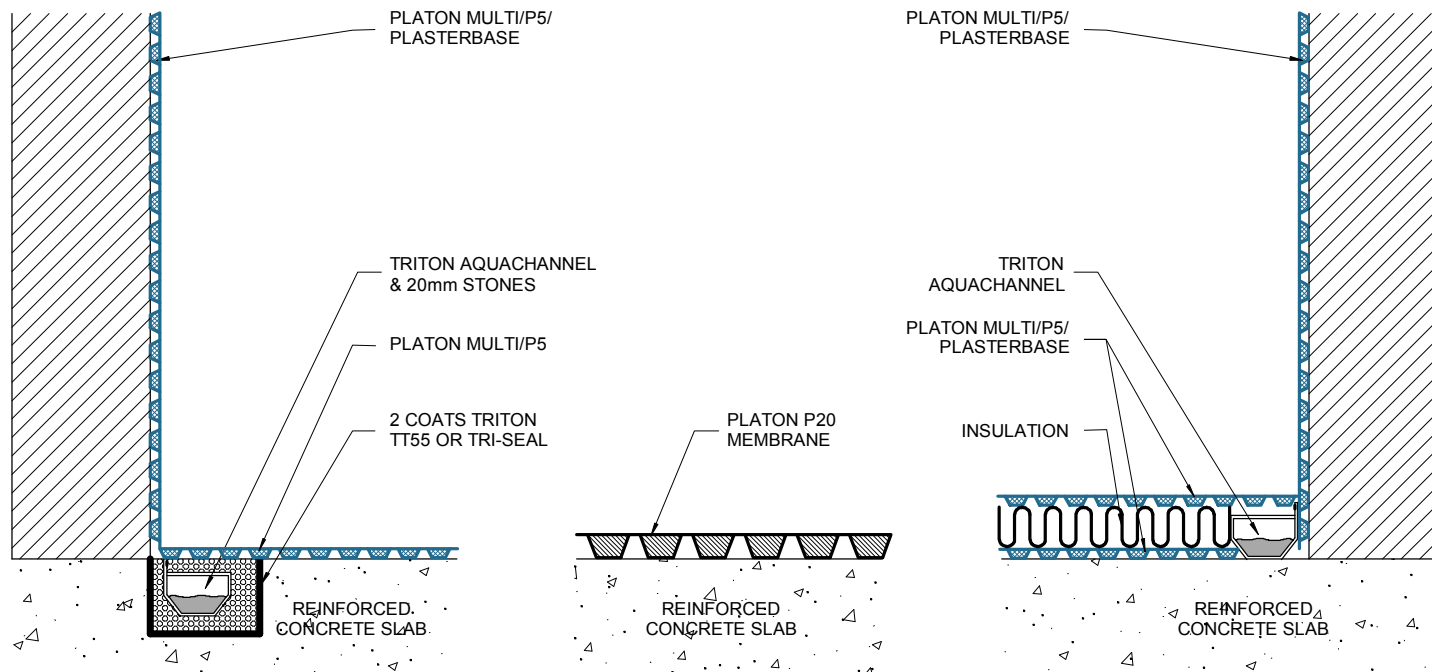
Web: www.tritonsystems.co.uk

THIS DRAWING IS THE PROPERTY OF TRITON SYSTEMS AND MUST NOT BE LOANED OR COPIED WITHOUT PRIOR WRITTEN CONSENT

© 2011 TRITON SYSTEMS

NOTE

ALL INSTALLATION TO BE CARRIED OUT IN STRICT ACCORDANCE WITH MANUFACTURERS INSTALLATION INSTRUCTIONS. FOR FURTHER ASSISTANCE CONTACT **TRITON TECHNICAL** ON THE TELEPHONE NUMBER ABOVE.



REV.	MOD. BY	DATE	CHK. BY	APP. BY

Alterations

TITLE:

Drainage Options For Existing
Reinforced Concrete Floor

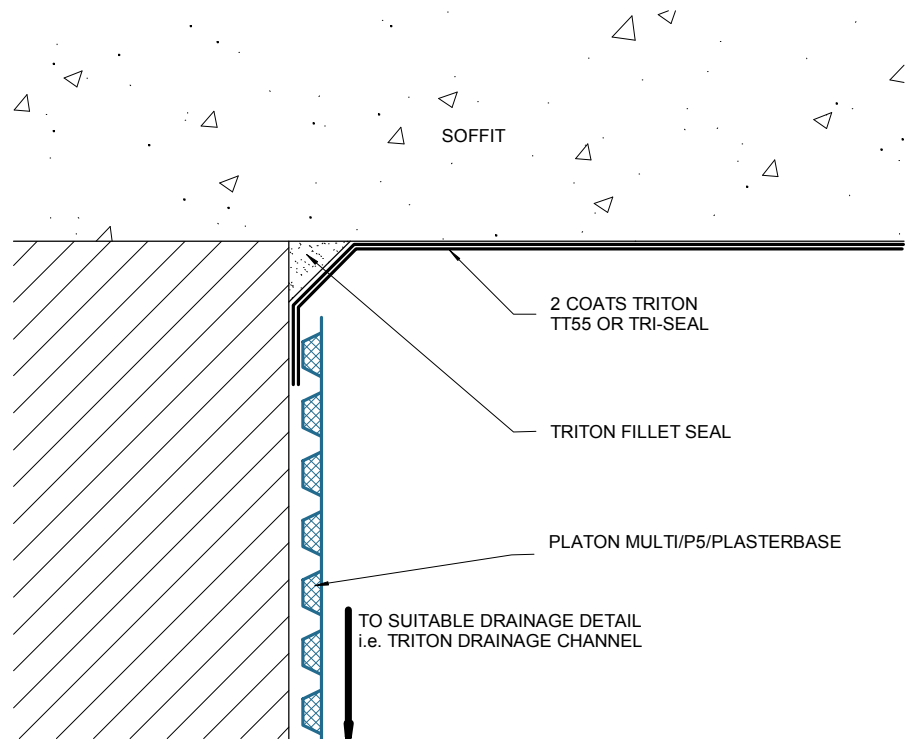
DRG. No.

IP 024.1

REV

2

DRAWN	JDF, CBS	System Files:
DATE	23rd October 2006	
SCALE (A3)	Not To Scale	IP024-1(2).pdf IP024-1(2).dwg
CHECKED		
APPROVED		



www.tritonsystems.co.uk

Triton Systems

Units 3 - 5 Crayford Commercial Centre
Greyhound Way, Crayford, Kent. DA1 4HF

Telephone: **01322 318830**

Fax: **01322 524017**

Email: **info@tritonsystems.co.uk**

Web: **www.tritonsystems.co.uk**

THIS DRAWING IS THE PROPERTY OF TRITON SYSTEMS AND MUST NOT
BE LOANED OR COPIED WITHOUT PRIOR WRITTEN CONSENT

© 2011 TRITON SYSTEMS

NOTE

ALL INSTALLATION TO BE CARRIED OUT IN STRICT ACCORDANCE WITH
MANUFACTURERS INSTALLATION INSTRUCTIONS. FOR FURTHER
ASSISTANCE CONTACT **TRITON TECHNICAL** ON THE TELEPHONE
NUMBER ABOVE.

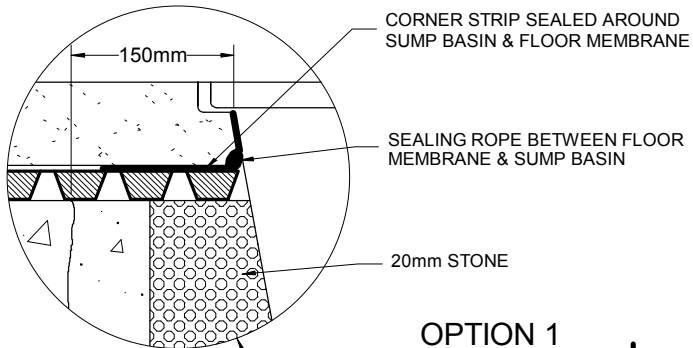
REV.	MOD. BY	DATE	CHK. BY	APP. BY
Alterations				

TITLE:

Flat Soffit Options For Type 'C'
Using Tanked Protection

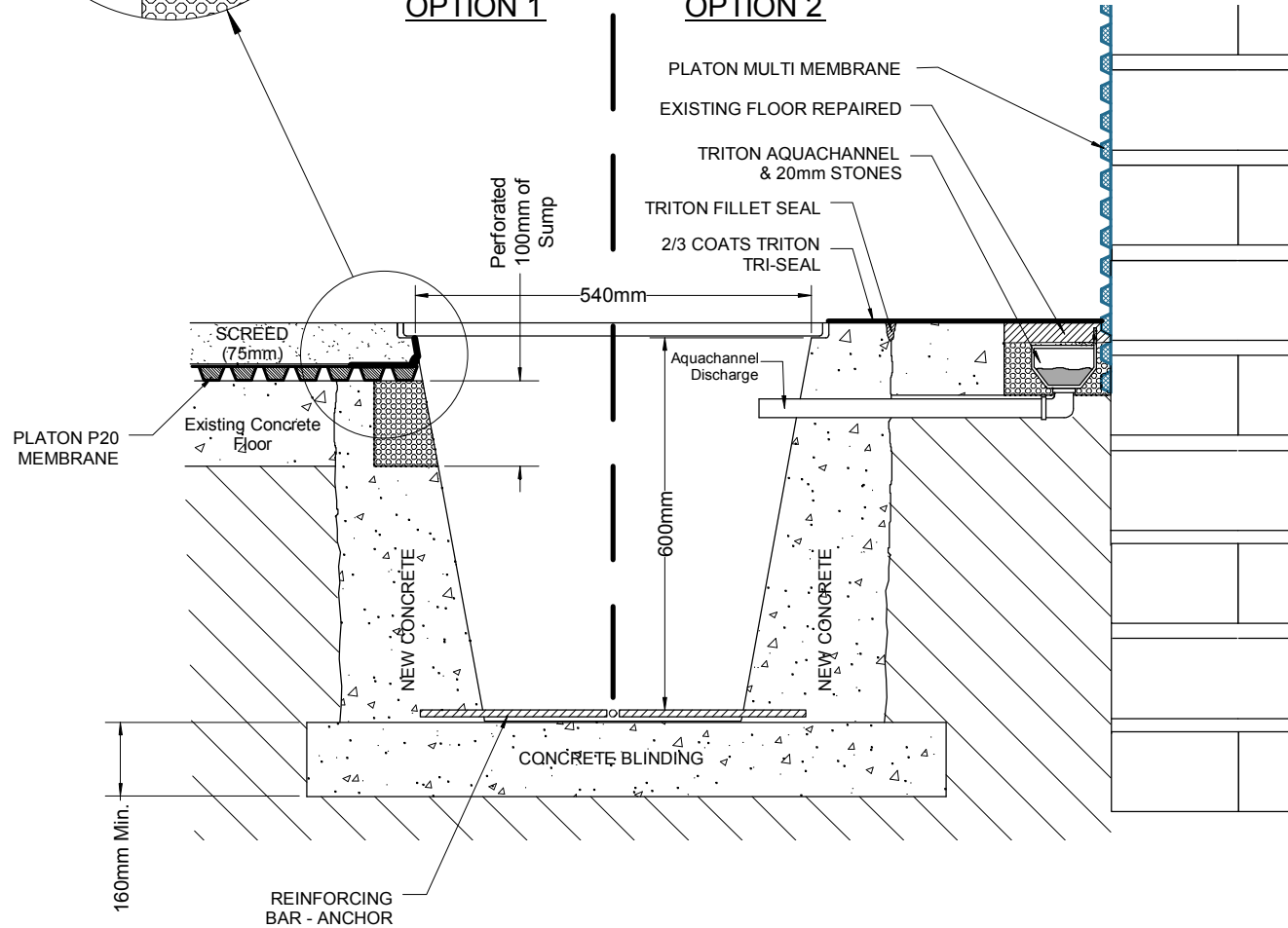
DRG. No.	IP 025.1	REV	2
-----------------	-----------------	------------	----------

DRAWN	JDF, CBS	System Files: IP025-1(2).pdf IP025-1(2).dwg
DATE	23rd October 2006	
SCALE (A3)	Not To Scale	
CHECKED		
APPROVED		



OPTION 1

OPTION 2



www.tritonsystems.co.uk

Triton Systems

Units 3 - 5 Crayford Commercial Centre
Greyhound Way, Crayford, Kent. DA1 4HF

Telephone: **01322 318830**

Fax: **01322 524017**

Email: info@tritonsystems.co.uk

Web: www.tritonsystems.co.uk

THIS DRAWING IS THE PROPERTY OF TRITON SYSTEMS AND MUST NOT BE LOANED OR COPIED WITHOUT PRIOR WRITTEN CONSENT

© 2011 TRITON SYSTEMS

NOTE

ALL INSTALLATION TO BE CARRIED OUT IN STRICT ACCORDANCE WITH MANUFACTURERS INSTALLATION INSTRUCTIONS. FOR FURTHER ASSISTANCE CONTACT **TRITON TECHNICAL** ON THE TELEPHONE NUMBER ABOVE.

REV.	MOD. BY	DATE	CHK. BY	APP. BY

Alterations

TITLE:

Sump Options - Installation
(Non-Perforated)

DRG. No.

IP 029.1

REV

2

DRAWN	JDF, CBS	System Files:
DATE	1st February 2007	
SCALE (A3)	Not To Scale	IP029-1(2).pdf IP029-1(2).dwg
CHECKED		
APPROVED		



www.tritonsystems.co.uk

Triton Systems

Units 3 - 5 Crayford Commercial Centre
Greyhound Way, Crayford, Kent. DA1 4HF

Telephone: **01322 318830**

Fax: **01322 524017**

Email: info@tritonsystems.co.uk

Web: www.tritonsystems.co.uk

THIS DRAWING IS THE PROPERTY OF TRITON SYSTEMS AND MUST NOT BE LOANED OR COPIED WITHOUT PRIOR WRITTEN CONSENT

© 2011 TRITON SYSTEMS

NOTE

ALL INSTALLATION TO BE CARRIED OUT IN STRICT ACCORDANCE WITH MANUFACTURERS INSTALLATION INSTRUCTIONS. FOR FURTHER ASSISTANCE CONTACT **TRITON TECHNICAL** ON THE TELEPHONE NUMBER ABOVE.

REV.	MOD. BY	DATE	CHK. BY	APP. BY

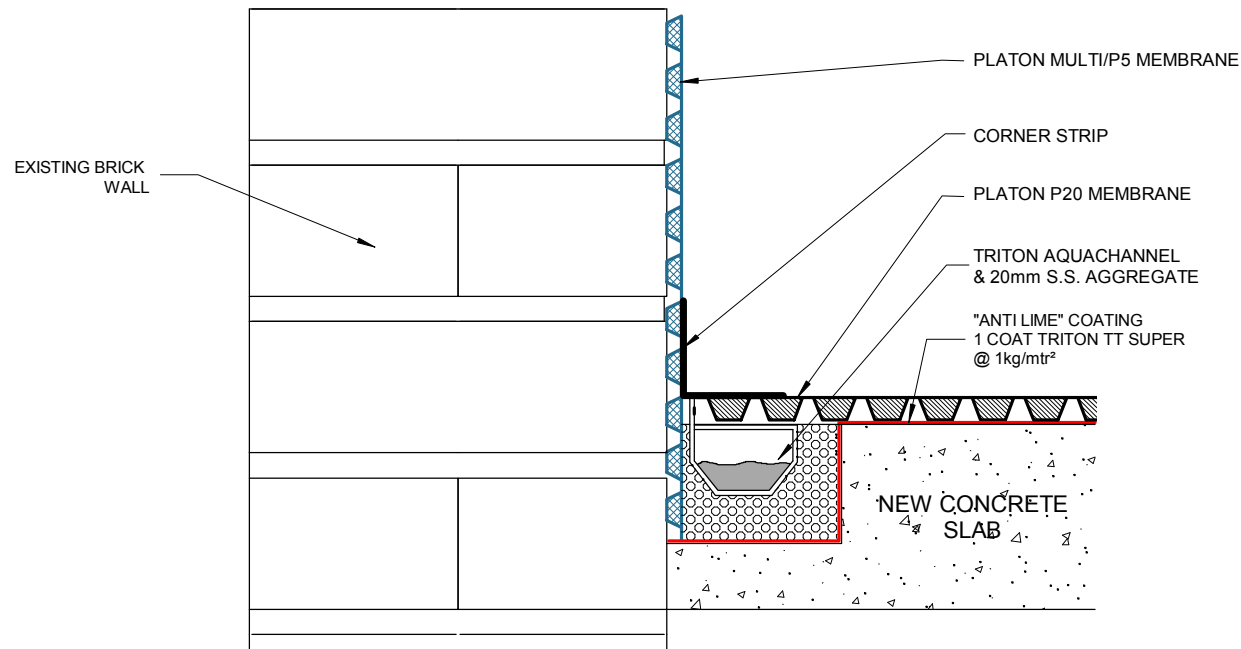
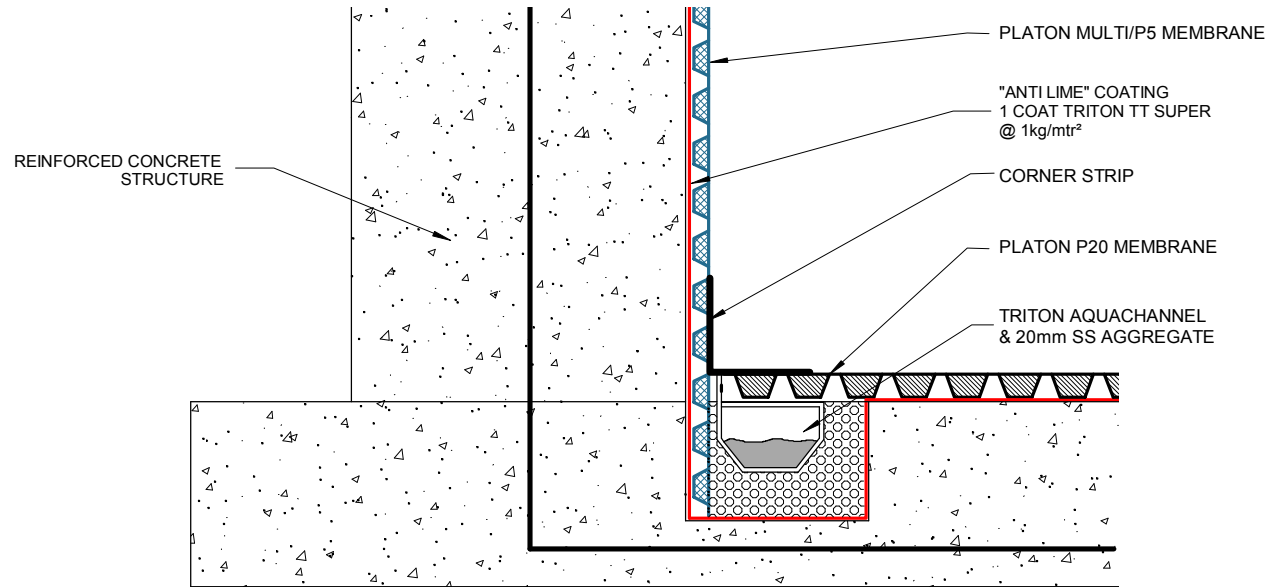
Alterations

TITLE:

Internal Cavity Drain
To New Concrete/Brickwork

DRG. No.	TT 009.1	REV	2
-----------------	-----------------	------------	----------

DRAWN	JDF, CBS	System Files:
DATE	20th July 2007	
SCALE (A3)	Not To Scale	TT009-1(2).pdf TT009-1(2).dwg
CHECKED		
APPROVED		



Section 2 - New Build Basements - Index

- IP 007.1** - New Build Internal/External Application including Balcony/Terrace
- IP 014.1** - Installation of Load Bearing Walls to Platon Membranes
- TT 009.1** - Internal Cavity Drain to New Concrete/Brickwork
- IP 030.1** - Platon P20 Membrane to Piled Walls
- IP 031.1** - Platon Cavity Drain to Multi Level Basements
- IP 035.1** - Platon Cavity Drain System - New Build Concrete Basement - Alternate Drainage Detail Option to Reinforced Concrete Slab
- IP 049.1** - Platon Double Drain to External Basement Walls
- TT/IP 048.1** - Waterproofing Options - Subterranean Room Combination System
- TT/IP 049.1** - Platon Double Drain to External Basement Walls
- IP 044.1** - Typical Basement Perimeter Wall/Slab Junction
- TT/IP 046.1** - Pool/Cavity Drain Waterproofing Detail

Section 3 - Insulated Concrete Formwork - Index

- TT/IP 061.1** - Waterproofing Options: Grade 3 - Low Risk/Sloping Site/Free Draining Soil
- TT/IP 062.1** - Waterproofing Options: Grade 3 - High Risk

Section 4 - Steel Intensive Basements - Index

- SIB 057.1** - Steel Intensive Basements: High Risk Areas, Twin Waterproofing
Grade 3 - BS 8102 (2009) Typical Section
- SIB 058.1** - Steel Intensive Basements: Low Risk Areas, Type B + A Combined
Grade 1 - BS 8102 (2009) Typical Section
- SIB 059.1** - Steel Intensive Basements: Type B - Integral Protection Walls & Floors
Grades 2 - BS 8102 (2009) Typical Section
- SIB 060.1** - Steel Intensive Basements: Type A - Floors & Capping Beam Type B - Walls
Grades 2 - BS 8102 (2009) Typical Section
- IP 033.1** - Platon Membrane to Sheet Piled Walls



Section 5 - Fixing/Sealing Details - Index

IP 026.1

IP 027.1

IP 032.1