



**CLEMENT<sup>®</sup>**

*creating light...beautifully<sup>™</sup>*

**Superb Steel Doors  
and Screens**



## *Creating light beautifully with Clement® steel screens*

It is around ten years since Clement's trailblazing steel door screens first graced the cover of Livingetc. Prized for their strong, slim frames which allow the maximum amount of light to flood a room, while creating the illusion of extra space, they have proved popular among homeowners, interior designers and architects alike.

Clement continues to lead the way today. Our W20 and EB20 doors can achieve a BFRC "B" Window Energy Rating and we now manufacture and install cold formed steel profile systems by Jansen which provide much increased thermal performance, enhanced security and fire protection.

Made bespoke to individual orders, our versatile steel doors and screens can be moulded into any design and used to divide or partition any space, modern or traditional, whether the setting is a residential or a commercial one. Both single and double doors can be incorporated into our screens, with either multi point locking which can be certified to PAS24 or a traditional mortice lock. We offer a broad range of RAL colours including bronze and metallics and a number of glazing options depending on the interior scheme and requirements for privacy, noise reduction and safety, as well as fire-rated products.

Clement steel and glass doors will last the lifetime of the building they are installed into, are easy to maintain and meet the exacting standards of Building Regulations. Our hot rolled steel doors and screens are produced from recycled source material, so choosing our door screens really is the green and sustainable choice.

We think the stunning photographs in the following pages speak for themselves – if you are inspired to include a steel screen in your design scheme, please contact one of our sales consultants on +44 (0)1428 643393 to arrange an appointment or visit our website [clementwindows.co.uk](http://clementwindows.co.uk). We look forward to hearing from you!



## 90-104 Berwick Street, LONDON

Built between 1687 and 1703, Berwick Street is a lively, diverse community located in London's Soho and home to one of the capital's oldest markets. The building at 90-104 Berwick Street has been transformed from a nondescript 1950s office block into a stylish, contemporary, mixed use development.

As the building is situated in the Soho Conservation Area it was important that the new shop fronts remained true to the character of this urban site. A combination of products was specified from both hot rolled and cold formed steel profiles. These included Clement W40 steel windows which sit beside and above the doors, the Jansen Economy 50 range of single and double doors and Jansen Economy 60 range of bi fold doors.

*Clement single and double doors from Jansen cold formed steel profiles.  
Clement W40 range of steel windows and Jansen Economy 50 single and double doors and Economy 60 bi-folding doors.  
RAL 9005 Jet Black (matt)*



## *Private residence, CAMBRIDGE*

When Emma Adams Architects were commissioned to extend and re-model this 1930s house in Cambridge, Clement's steel screens and doors were specified due to their ability to look good in both heritage and modern settings.

The interior of the house was updated to incorporate a large kitchen/dining room/ living room with a glazed steel partition overlooking the garden. A combination of steel window sections was required for this project. Clement W20 steel sections were specified for the internal screens due to their appealing slim frames. The external window and door screens were manufactured from Clement EB24 steel sections which enabled both the windows and doors to match whilst offering insulated glass units with improved thermal efficiency.



### *Interior screens*

*Clement W20 suite of steel door sections*

*RAL 9005 Black (matt)*

*FA3006 Chelsea handles in imperial brass finish*

*6.4mm single glass, laminated*

### *Exterior screens*

*Clement EB24 suite of steel door sections*

*RAL 9005 Black (matt)*

*FA3006 Chelsea handles in imperial brass finish*

*24mm insulated glass units, argon filled*



## Sedlescombe Vineyard, EAST SUSSEX

Sedlescombe is England's oldest organic wine estate comprising 22 acres of organically certified vineyards. It is one of the main tourist attractions in the '1066 Country' region in and around Hastings, attracting approximately 5,000 visitors per year to its Vineyard & Woodland Nature Trail. After more than 35 years of pioneering and award-winning organic wine production the previous owners decided it was time for a change, so they sold the Vineyard to local couple who were excited to invest in an established, independent business.

The new owners have totally transformed the Vineyard's shop and tasting room with a stunning combination of steel and glass being incorporated through the whole building design. The enormous pair of radius head EB24 door screens provide a magnificent feature both internally and externally. They are in keeping with the natural surroundings and a fabulous backdrop to the shop. Inside you will find Clement W20 doors and screens used to beautifully partition rooms and allow light to flow through the building.

### Interior screens

*Clement W20 suite of steel door sections*

*RAL 7021 Black Grey (matt)*

*FA 3006 Chelsea handles in imperial bronze unlacquered finish*

*6.4mm single glass, laminated*

### Exterior screens

*Clement EB24 suite of steel door sections*

*RAL 7021 Black Grey (matt)*

*FA 3006 Chelsea handles in imperial bronze unlacquered finish*

*with matching Soho peg stays*

*24mm insulated glass units, argon filled*



## *Herondale – Private Residence, LONDON*

Bygga Construction extended this magnificent London family home to include a master suite and guest wing. As part of the project the basement was dug out to create a massive family room, complete with wine cellar.

Three Clement double steel door sets were included in the design for the rear elevation. Not only do these create a stunning feature but they allow plenty of natural light into the increased family living space. Clement EB24 steel sections were chosen for their elegant, slim frames and their ability to hold a thermally efficient 24mm double glazed unit. Above each set of doors is a fixed glazed panel which creates the appearance of height. The genuine T bars used within the door design are in keeping with the contemporary look of the house. Richmond handles in an imperial brass finish were chosen to complement the decor.

*Clement EB24 suite of steel door sections with genuine T Bars  
RAL 9004 Signal Black (matt)  
FA5252 Richmond handle in imperial brass finish  
24mm insulated glass units, argon filled*



## *Private residence, LONDON*

Hampstead Garden Suburb is internationally recognised as one of the finest examples of early 20th century domestic architecture and town planning.

Renovation of the exterior of properties located in this area is closely monitored by the Hampstead Garden Suburb Trust.

Clement has long been a replacement steel windows and doors supplier to properties in the Suburb. When the owners of this attractive property decided to refurbish and extend their home, they opted for products manufactured by Clement.

New steel windows and doors from the Brooking and W20 ranges were selected and the client chose dual colour for much of the fenestration on the rear elevation – the outside frames were painted Pure White and the inside Black Grey to perfectly suit the design of the house.

*Clement W20 suite of steel door sections and Brooking steel windows with leaded lights*

*RAL 9010 (Pure White) matt on the outside, RAL 7021 (Black Grey) on the inside  
FA3006 Chelsea handles*



### *Private residence, SURREY*

This stunning Grade II\* listed property was built in 1932 by architects Connell, Ward and Lucas and is a rare example of the Modernist movement in architecture.

The windows are a key component of the architecture which is based on the movement of the sun so that in the morning the breakfast room benefits from the light while in the afternoon the living room gets the sun.

The Clement EB20 steel doors which include Clement's multi-point locking system to PAS24 are painted a striking RAL 5024 (Pastel Blue).

*Clement EB20 suite of steel doors  
RAL 5024 (Pastel Blue) matt  
FA3006 Chelsea handles in satin chrome finish*



## Cresswell Place, LONDON

One of the finest luxury family homes to come on to the Chelsea market for many years, Cresswell House is an exquisitely conceived and exceptionally spacious house situated within The Boltons Conservation Area. The house offers unrivalled family accommodation over five floors including bedroom suites, a staff area, cinema, swimming pool, gymnasium and spa.

Clement were specified to provide the magnificent steel screens that surround the courtyard and living areas, enabling maximum natural light. Clement EB24 with G+ weld on bar insulated glass units feature in the steel screen and door design. Both the frames and Kensington handles were polyester powder coated in RAL 7021 Black Grey (matt).

*Clement EB24 suite of steel window sections with G+ welded on bars  
RAL 7021 Black Grey (matt)  
FA3005 Kensington handles powder coated to match frames  
24mm insulated glass units, argon filled*



## *Clifton Interiors – Private Residence, LONDON*

This North London family home has undergone a total transformation by our client Sara-Int Renovations Ltd. Two existing extensions have been demolished, the front entrance has been repositioned and the lower ground floor entirely rebuilt. The terrace off the living room was also reconstructed and now benefits from a spiral staircase which connects to the garden.

The newly designed house showcases various styles of bespoke Clement steel window door screens and partitions, all with genuine T bars. Internally a fabulous steel partition acts as a wall to separate a landing space from the kitchen. Slim Clement W20 steel sections were used to create this stunning feature which creates both an abundance of light and a feeling of space. This partition was fitted with Pyroswiss, integrity only fire resistant glass, allowing it to perform in excess of 30 minutes where ordinary toughened glass cannot. At the rear of the property you can see a trio of Clement double door screens, one of which includes a beautiful curved head. The EB24 range, which benefits from 24mm double glazed units, was used for all three sets of exterior doors.

*Clement EB24 & W20 steel door range with genuine T Bars*

*RAL 7002 Umbra Grey (matt)*

*FA3006 Chelsea handle powder coated to match frames*

*24mm insulated glass units, gas filled and 8mm Pyroswiss 30min integrity glass*

*Photographs purchased from Clifton Interiors, taken by Graham Gaunt Photography*

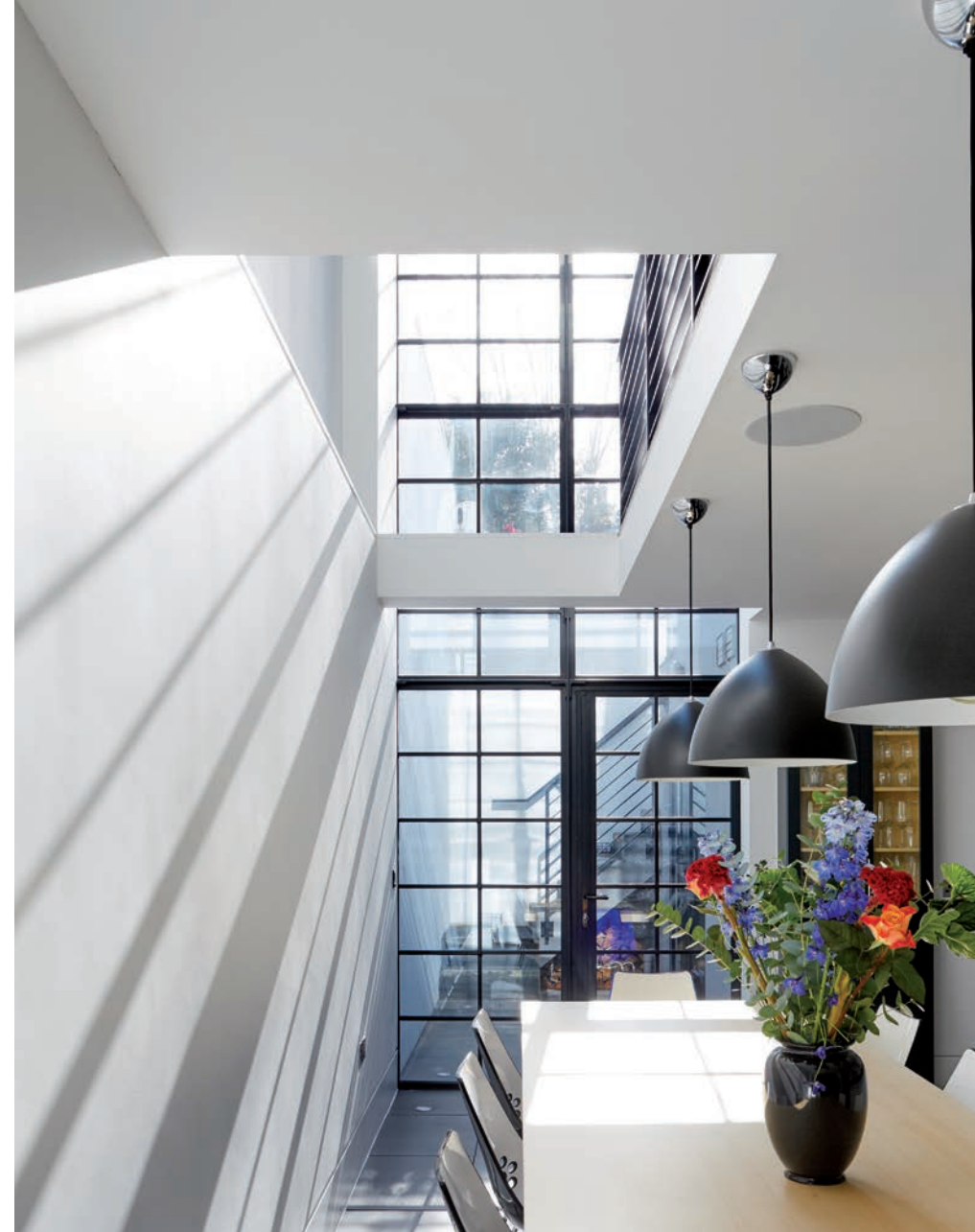


## Private residence, LONDON

Dividing the three rooms in this London basement could have resulted in a dark, uninviting area, but the use of Clement steel and glass screens has allowed natural light from the small primary windows to brighten the entire space.

Steel sections from the Clement W20 range were engineered to create interior doors powder coated in RAL 7021 Black Grey (matt). FA 5246 handles with an adjustable roller catch finish the look, colour coded to the frames.

*Clement W20 suites of steel door sections  
RAL 7021 Black Grey (matt)  
FA5246 Seymour handles powder coated to match the frames  
6.4mm single glass, laminated*



## Private residence, LONDON

London based practice, Granit Architects, chose Clement Windows to manufacture and install a magnificent two storey steel screen for this residence in Clapham. The Clement EB24 range was specified for its slim, strong sections and stylish appearance.

The 24mm double glazed screen, which includes a ground floor multi point locking single door, is polyester powder coated in RAL 9005 Black (matt) and finish ed with a dark bronze effect handle.

*Clement EB24 suite of steel window sections with G+ welded on bars  
RAL 9005 Black (matt)  
FF03 Mayfair handles in dark bronze effect finish  
24mm insulated glass units, argon filled*



## *The Maple Building, LONDON*

Clement have replaced hundreds of industrial style steel windows and grand door screens at the newly restored Maple Building in Kentish Town, North West London. The building which dates back to 1890s was acquired by developers The Linton Group who have converted the old warehouse into five floors of luxury apartments and penthouses.

Interior architects, Gordon-Duff & Linton required a high specification throughout, focusing on strong acoustic and design performance. Clement W40 steel windows and Jansen double doors were the perfect choice, complementing the cosy, well-lit interiors that are a feature of the building, as well as offering superb quality and an impeccable match to the original fenestration.

*Clement W40 suite of steel window sections, incorporated within a Jansen cold formed steel entrance door*

*RAL 7022 Umbra Grey (matt)*

*Jansen 555.588 lever handles in stainless steel*

*26.8mm insulated glass units, argon filled*

## The Clement Windows Group

Clement has its origins in the nineteenth century when the Clement family first became involved in the fenestration industry. It now has a broad range of shareholders who are committed to the Clement Windows Group and its development.

The Clement Windows Group manufactures an innovative range of windows, doors and screens which are regularly specified for use in Listed Buildings and Conservation Areas, as well as new build projects. All of our windows, doors and screens are created bespoke in our ISO 9001 and ISO 14001 approved factory. We also offer a desirable range of conservation rooflights.

We are very proud of the association Clement has with quality and aesthetics, as is evidenced by our past client list which includes well known buildings at home – eg Bonhams in London, Manchester University, The Pithay in Bristol and Comet Works in Birmingham – as well as abroad – eg the Eldorado Apartment Building in Manhattan.

At Clement our aim is to provide superb quality products that will enhance the look of your property for generations to come. We are committed to developing an increased range of fit for purpose products that are environmentally friendly and meet the highest levels of specification and performance. From initial enquiry to the fitting of your new windows by our friendly and efficient installation teams, we strive to ensure every customer receives the best possible service.

*Clement, EB20® and EB24® are registered trademarks of Clement Windows Group Ltd in the United Kingdom, European Union and United States of America. Brooking® is a registered trademark of Clement Windows Group in the United Kingdom and European Union.*

### The Maple Building, LONDON

*Clement W20 suite of steel door sections  
with genuine T Bars*

*RAL 7016 Anthracite Grey (matt)*

*103-PW Ash pull handle in satin stainless  
chrome finish*

*6.4mm single glass, laminated*

Clement Windows Group, Clement House, Haslemere, Surrey, GU27 1HR  
Tel: +44 (0)1428 643393 Email: [info@clementwg.co.uk](mailto:info@clementwg.co.uk)

For further information please visit our website

*[clementwindows.co.uk](http://clementwindows.co.uk)*