

CAVIUS

WIRELESS.)))

ALARM FAMILY

SMOKE

ALARM



Optical smoke alarm device
Commercial reference: 2106
Developed by CAVIUS

The smoke alarm is designed for private homes.

PLEASE READ THE USER GUIDE CAREFULLY BEFORE INSTALLATION AND RETAIN FOR FUTURE USE.

SAFETY INSTRUCTIONS:

The device comes with a 3V lithium battery. Batteries are to be handled with care and battery powered devices should be kept out of reach of children. Do not try to recharge or burn the batteries.

TECHNICAL INFORMATION:

The maximum number of alarms that can be interlinked within a house group are 32.

Please note: These must be alarms from the CAVIUS WIRELESS.))) ALARM FAMILY

The distance between interlinked alarms depends on the house layout and they should always be tested after installation. It is not advised to get more than 10m distance between two smoke alarms.

Diameter: 78mm. Height: 44mm

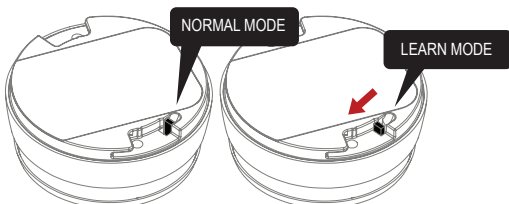
The alarm is powered by a non-replaceable 10 year battery (pack of 2 CR123A Lithium batteries). In normal situations, minimum battery life is 10 years, but severe RF interferences may affect battery life of your device.



1. HOW TO SET UP AND CONNECT ALARMS:

Please note: The product label must not be removed as it contains important information regarding the product.

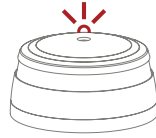
All alarms that need to be connected in the house should be put into 'Learn Mode' by sliding the switch on the back of the alarm to the 'Learn Mode' position.



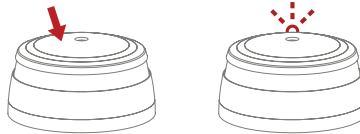
The red LED will light up to indicate that 'Learn Mode' has been selected.

Please note that when the alarms are placed in 'Learn Mode' they can't be inserted into the mounting base.

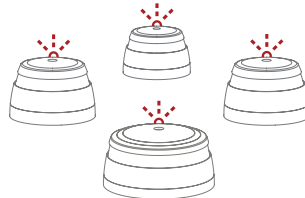
Press and hold the test button at one alarm only, until it beeps and the LED flashes. This alarm will become the master and will start sending out a specific house code to the other alarms.



As the other alarms receive the specific house code, they will also flash the LED light.



When the red LED light flashes on all alarms, they are connected and **MUST BE SWITCHED OUT OF 'LEARN MODE'** and installed.



Label the original "Learn" alarm in order to easily add new CAVIUS Wireless Family alarms to the system.

2. THE BEST AREAS TO INSTALL THE SMOKE ALARM:

- Install an alarm between possible fire sources and bedrooms as a minimum.
- Install alarms on each floor of the house, in hallways and stairways.
- Alarms in each room such as bed rooms and living rooms.

Additional alarms increase the security.

3. AREAS WHERE **NOT** TO INSTALL SMOKE-ALARMS:

- In dusty rooms.
- At the top of a high pointed ceiling, in ceiling corners, and within 50cm of a wall.
- In rooms where the temperature goes outside +4° to 38°C or above 90% relative humidity not condensing.

- In kitchens, garages, laundries, or too close to fireplaces; areas where either dampness, gases or smoke could occur.

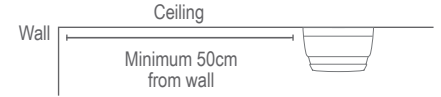
Place the alarm where it is reachable in order to test the battery and for maintenance.

4. PLACEMENT:

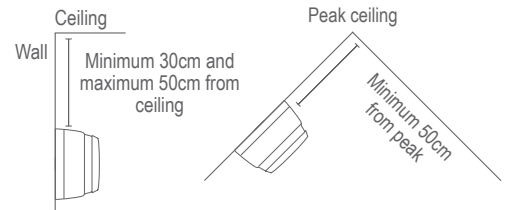
The smoke alarm is design to be installed on a ceiling or wall.

For ceiling installation:

The smoke alarm should be a minimum of 50cm from the wall.



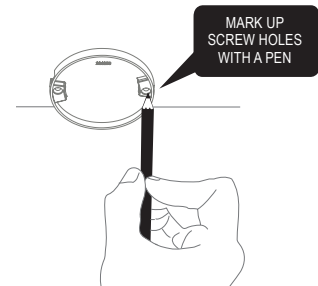
For cathedral or peak ceiling or wall installation:



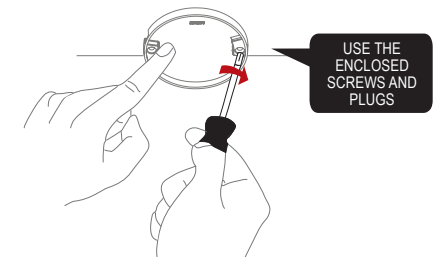
With a minimum of one smoke alarm per floor and a maximum distance between smoke alarms of 10 meters.

5. INSTALLING THE SMOKE ALARM:

Detach the alarm from the mounting base by twisting counter clockwise.

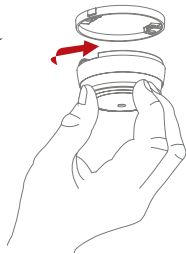


Use the mounting base ring to mark the screw holes on the ceiling or the wall.



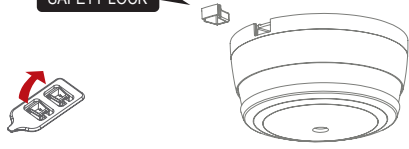
Once the mounting base is installed, attach the alarm by twisting clockwise until it clicks. If the switch is in 'Learn Mode', the smoke alarm will not be able to click into the mounting base.

CLICK THE SMOKE ALARM FIRMLY INTO THE BASE TO LOCK



6. SAFETY LOCK:

MOUNT THE SAFETY LOCK



7. TEST FUNCTION:

After installation, and at least once per quarter, test all of your alarms to ensure they are operating correctly and are within range of each other.

It is recommended to check visually every week if the LED flashes correctly (every 48sec.)

Press the test button on any alarm for at least 10 seconds. This will send out a test signal from the alarm; all other connected alarms should receive the signal within a short time. The alarms will emit a short beep and the LED will flash every 8 seconds for 2 minutes.

NOTE: Test function also allows to send a depleted RF signal to ensure an optimal operation in normal conditions.

When the test signal is sent out, the alarms will respond in two ways:

1. A single beep every 8 seconds indicates that the alarms are connected and functioning.

2. Three short beeps every 8 seconds indicates a smoke sensor fault. The alarm should be cleaned by running the vacuum (on a low setting) around the smoke alarm chamber and tested again.

If required this indication can be stopped early on each alarm by a short press of the test button.

TIP: It is safe to cover the sound output hole with your finger during the testing to minimize the sound level emitted.

If the problem continues, please visit www.cavius.com for any trouble shooting.

8. NORMAL MODE:

In normal mode the LED will flash every 48 seconds to show correct operation.

9. ALARM MODE:

When a concentration of smoke is detected, the smoke alarm will go into 'Alarm Mode'. It will sound the alarm signal and the LED will flash.

The smoke alarm will also transmit the alarm signal to the other connected alarms, which will also

sound the alarm signal after a short delay.

The CAVIUS Wireless Family have two different alarm signals:

Alarm signal 1 (--- --- ---) is life threatening alarms, like a smoke alarm.

Alarm signal 2 (- - -) is a non life threatening alarm, like a flooding alarm:
 Smoke alarm signal: --- --- ---
 Heat alarm signal: --- --- ---
 Flood alarm signal: - - -

Please note that only the originating alarm's LED will flash, so it can be identified.

10. PAUSE/HUSH FUNCTION:

If the smoke alarms are to set into a false alarm by cooking, fireplace, etc. they can be paused for 10 minutes by pressing the test button on the originating smoke alarm only (indicated by the flashing LED).

The reason of this is that it is necessary to locate the source of the alarm before using the hush function. This is to make sure that it is not a life threatening situation.

11. ADD EXTRA DEVICE:

All CAVIUS interconnected alarms within the **WIRELESS ALARM FAMILY** can be added to the system as they run on the same frequency and use the same data protocol. This means that the wireless system can consist of a combination of smoke, heat, flood etc.

Place all alarms into 'Learn Mode' and repeat section 1.

Always test connection to all devices by repeating test function section 7 after adding devices.

12. LOW BATTERY SIGNAL:

Your product has a 10Y battery life. When the battery is starting its end of life, a short beep will sound out every 48 seconds for 30 days.

The alarm affected by the low battery will only beep, no other connected alarms will sound.

It is recommended to replace the smoke alarm after 10 years, or if the alarm has suffered any damage. The alarm is not active unless it is inserted in the mounting base.

Always check the alarm after inserting in the mounting base (allow a few seconds before testing).

13. MAINTENANCE & TROUBLE SHOOTING:

- The smoke alarm should be vacuum cleaned once per quarter, to remove dust particles, and it can be wiped with a damp cloth. (Do not open the alarm).
- High humidity condensing which can be resolved by drying the smoke alarm.

If the smoke alarm does not work when the test button is pushed, the probable cause is a faulty battery. Check if the battery is depleted by pushing the test button.

If the problem continues, please visit www.cavius.com for any trouble shooting.

14. OTHER INFORMATION:

Do not paint the alarm.

Disposal: please dispose properly at the end of life. This is electronic waste which should be recycled.

Please note local regulations about information to your insurance company regarding installed smoke alarms.

Complies to the Radio Equipment Directive 2014/53/EU

RF Frequency: 868 MHz.

Maximum radio-frequency power transmitted: 20 dBm

Full DoC to 2014/53/EU (RED) can be downloaded at www.cavius.com

WARNING: All alarms should be assumed as due to actual fire and the dwelling should be evacuated immediately.

WARNING: To prevent injury, this apparatus must be permanently fixed to the ceiling/wall in accordance with the installation instructions.

WARNING: Batteries shall not be exposed to excessive heat such as shine, fire, or the like. Note the local country regulations regarding installation.

The CE mark affixed to the product confirms compliance with all relevant European directives and harmonized requirements in the EN14604 standard and Construction Products Regulation (CPR) 305/2011 along with the Radio Equipment Directive (RED) 2014/53/EU for all wireless family products.



1116
 EN 14604:2005 + AC :2008
 DoP no.: 2106
 The CE and RED declaration of conformity and DoP can be downloaded from: <http://www.cavius.com>
 The paper version of the DoP is available free of charge upon request.
 Declared performance: 4.1.4.19 + 5.2.5.24: Passed.

All Rights reserved: CAVIUS Aps assumes no responsibility for any errors, which may appear in this manual. Furthermore, CAVIUS Aps reserves the right to alter the hardware, software, and/or specifications detailed herein at any time without notice, and CAVIUS Aps does not make any commitment to update the information contained herein. All the trademarks listed herein are owned by their respective owners. Copyright © CAVIUS Aps.

Developed by CAVIUS Aps Julsøvej 16, DK-8600
 Manufactured in P.R.C.

