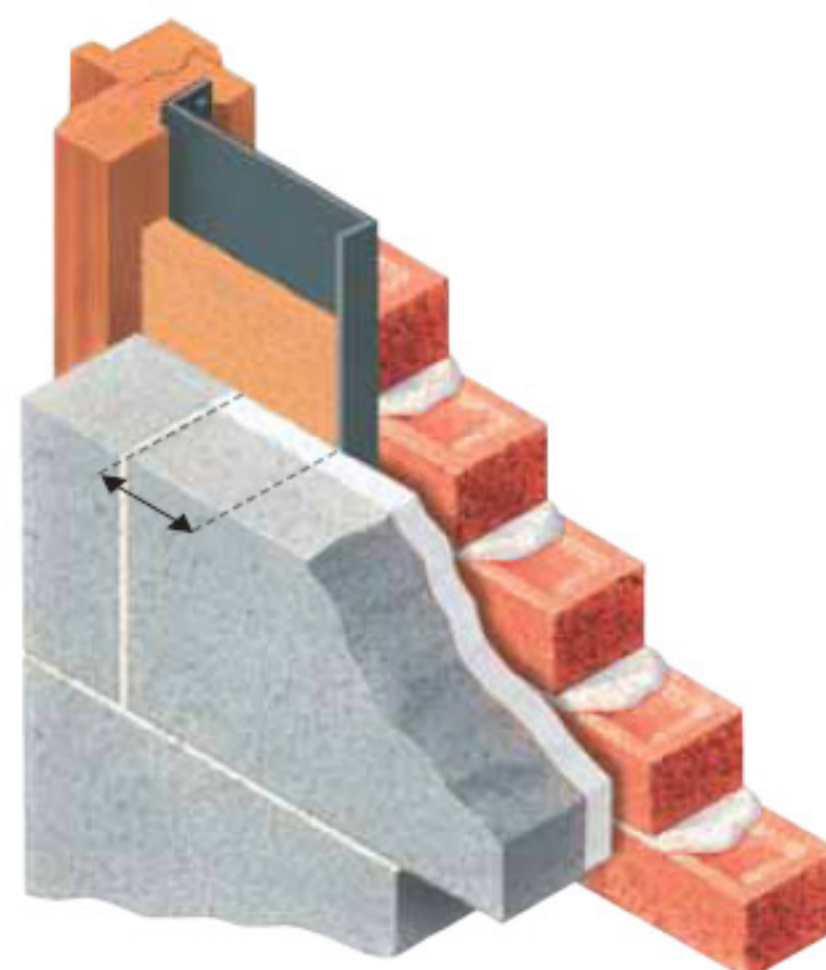


Type DIP

Type D Interfacing Profile



- Vertical dpc
- Thermal break
- Interfaces with cavity insulation
- Eliminates thermal spiking
- Rigid profile ensures consistency of build

Introduction

The Type DIP (Type D in Interfacing Profile) is used where the mason is returning block work at the reveal in the traditional manner, and slab insulation is present within the cavity. The Type DIP is manufactured of solid dpc to which is bonded insulation. The dpc profile extends sufficiently into the cavity to permit this insulation to overlay the cavity slab insulation and maximise the thermal arrangement whenever inner and outer skins meet. Different profiles are available for both straight and checked applications to suit structural requirements.

References

- Investigating Rainwater Penetration of Modern Buildings (Masonry 129)
- Building Regulations Part L
- British Standard 5628-3
- BRE Thermal Insulation Avoiding Risks
- Website: cavitytraystandards.co.uk
- Robust Details
- Scottish Tech Standards Part D
- BS EN ISO 6946:1997

| Type DIP DPC & Interfacing Insulator | Accommodates traditional reveal closing |
|--|---|
| Exposure rating | Severe / Very severe pending profile |
| Cavity - standard sizes accommodated | Profiles available to suit all cavity dimensions |
| Special cavity widths accommodated | Yes - all dimensions variable |
| Straight reveals | Yes - build in profile as supplied |
| Checked reveals | Yes - see illustrated version / style |
| Product lengths | 2.44m. |
| Acts as vertical dpc | Yes |
| Acts as insulator | Yes |
| Permits different frame positions | Yes |
| Frames fitted as work proceeds or later | Build in when wall is raised |
| Timber frame / traditional construction | Both styles accommodated |
| Masonry skin styles | All popular flat faced masonry |
| Undulating masonry face finishes | Seek advice providing details of material |
| Acoustic insulator | Acoustic insulation option available |
| Fire rated | No (see Cavi prefixed range for fire rated) |
| Vertical and horizontal applications | Vertical. Horizontal versions to order |
| Compatible with other cavity wall elements | No known restrictions |
| Securing ties supplied | NA |
| Pack sizes | X 10 lengths |
| Weight per pack | Dependent on profile. Average pack 8kg |
| Material | Polypropylene dpc + polystyrene BS 3836-1986 |
| Colour | Black with tinted white insulator |
| Manufacturing standard | BS EN ISO 9001:2000 |
| Building Regulations | Yes regulations can be satisfied |
| NHBC / Zurich / Premier requirements | Yes requirements can be satisfied |
| 'k' value of insulations | 0.033W/mK / 0.038W/mK |
| Possible composite thermal resistance path | 0.89 m ² K/W (25mm) 1.55 m ² K/W (50mm) |
| CFC free | Yes+ zero ODP |
| CAD drawing downloads available | Yes |

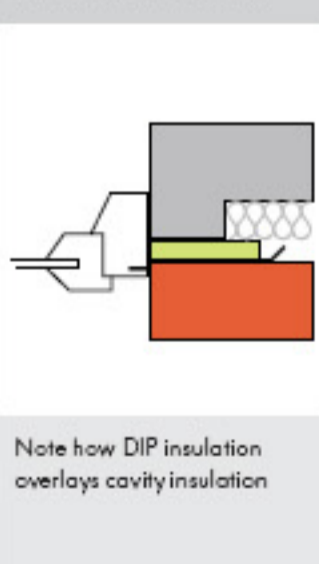
Specify

Type DIP by Cavity Trays of Yeovil Somerset BA22 8HU to close cavity wall reveal. State profile / dimensions to permit compatible matched dimension Type DIP to be supplied.

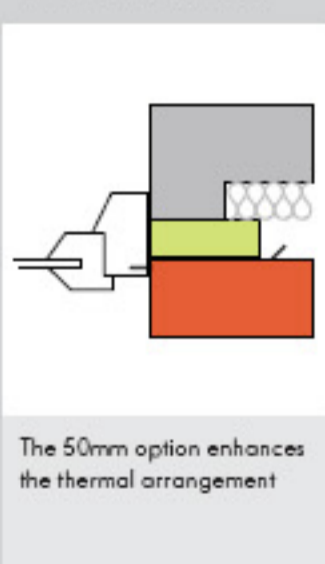
Construction Advantage

Type DIP permits traditional closing and importantly interfaces with the cavity sheet insulation. This avoids vertical breaks (spiking) that can manifest if the cavity sheet insulation is not accurately and consistently cut up to the reveal. The Type DIP promotes cost effective traditional closing with enhanced thermal status.

25mm Insulation



50mm Insulation



COMPUTER REFERENCE CODES:
DIP (WITH 25MM INSULATION)
DIP2 (WITH 50MM INSULATION)

