

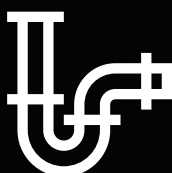
■ GEBERIT

# Clean disposal.

Geberit waste and drainage systems,  
waste fittings and traps



**KNOW  
HOW**  
INSTALLED



# Water, simply connected.

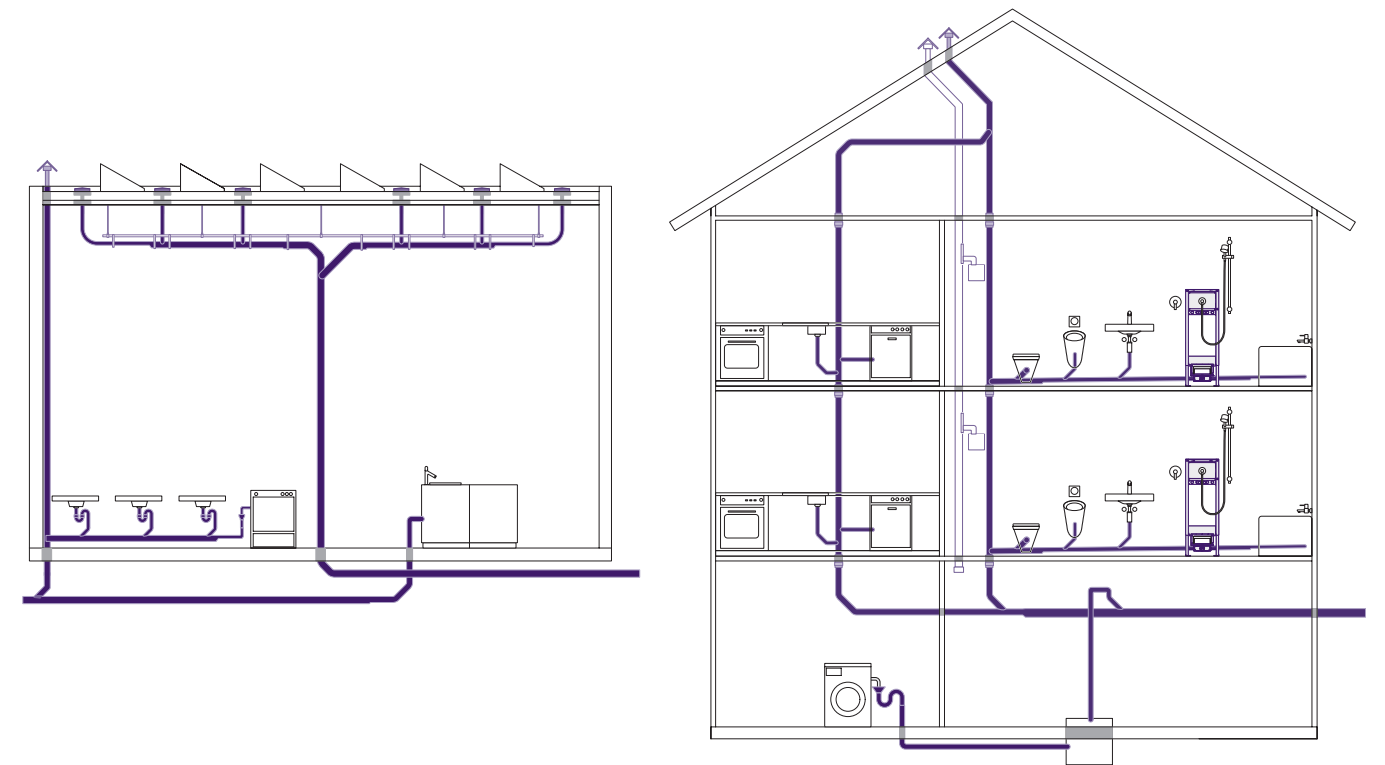
## **Play it safe.**

Geberit stands for know-how in the field of sanitary technology. From the connection to the water supply through to the distribution to all of the floors and consumers, all the way to the drainage of roofs and buildings into the public sewage system, you can rely on Geberit systems.

With Geberit, you can provide your customers with state-of-the-art technological solutions with respect to hydraulics, fire protection and sound insulation, reliability and environmental properties.



# Everything for drainage.



## Drainage

Geberit Silent-db20	8–9
Geberit HDPE	10–11
Geberit Sovent	12–13

## Roof drainage system

Geberit Pluvia	14–17
----------------	-------

## Safety and convenience

Fire protection and sound insulation	18–19
--------------------------------------	-------

## Inlets and drains in the bathroom

Bath inlets and drains	20–21
Shower drains	22–23
Floor drains and shower channels	24–25
In-Wall shower drain	26–27
Floor drain	28–29
Washbasin traps	30–31

# Geberit's systematic approach to technology.

When everything matches and fits.

**Drainage means more than simply draining away water. To ensure that its drainage technology can keep up with reality on the building site and with the high fire protection and sound insulation requirements, Geberit invests lots of know-how into developing innovative products.**

#### **Always room for improvement**

Geberit is the market leader in the area of sanitary technology in Europe. This is particularly true in the field of building drainage. Hardly any other company in this sector invests as much year after year in continually optimising existing systems and in developing new technologies and products as Geberit.

#### **High level of expertise in fire protection and sound insulation**

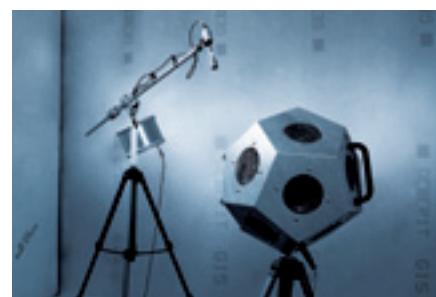
In addition to laboratories for sanitary technology and developing materials, Geberit also operates a Building Technology and Acoustics Laboratory that is unique worldwide. Here, both individual components and entire drainage systems are checked for their hydraulic, acoustic and static properties. The sound transmission of discharge stacks through several floors can be tested under realistic conditions and optimised. In the area of fire protection, Geberit works closely with external testing laboratories. Both prototypes and series products are subjected to realistic fire tests. This development work fully takes into account the fire protection requirements which vary from country to country.

#### **System solutions with high flexibility**

For Geberit, the waste fittings are the visible part of the waste water installation and, together with the Geberit piping systems, form a homogeneous unit with simple interfaces. Geberit waste fittings also form perfect connections with the sanitary appliances. No matter whether the bathroom design needs to fulfil the highest expectations, barrier-free applications are required or the construction simply needs to be as space-saving as possible – Geberit has the right solution.

#### **Go with the pros**

The success of a product or technology goes hand in hand with its practicality at the building site and its economic efficiency. For this reason, the feedback and suggestions provided by sanitary engineers from across the globe are taken into account for all new innovations and further developments. This means that Geberit products and systems incorporate your know-how!



- **Future-proof drainage system**
- **Compliance with sound insulation and fire protection standards**
- **Safe connection technology and waste fittings**
- **Fitting solutions for almost every area of use**



# Geberit Silent-db20.

## The silence of waste water.

**Sound insulation is already installed in the Geberit Silent-db20 drainage system. That means you can feel confident about meeting the existing sound insulation requirements. Pipes, fittings, connections, fastenings and insulation are processed economically and offer everything you need for a practical drainage system.**

### Triple protection against sound

The mineral-reinforced plastic PE-S2 is used in the manufacture of Geberit Silent-db20. It increases the weight of the pipes and fittings. This reduces their natural vibrations and also effectively insulates against sound. Additional sound insulation ribs in the impact zones help to reduce the development of noise. System pipe brackets for wall fastening decouple the system acoustically from the wall or ceiling and prevent sound transmission.

### Always the right dimension

The branch fittings in the typical discharge stack dimensions are hydraulically optimised. This allows for greater loads on the stack and, in some cases, allows smaller stack dimensions to be used. Pipes and fittings are available from DN 56 to DN 150.

### Two reliable connection types

Two different connection types are available, depending on the application. Clamping connectors with screw connections can be loosened at any time and therefore allow corrections to be made to the system. The electrofusion coupling or butt-weld process will enable you to achieve complete tensile strength simply and safely, which provides additional safety when pipes are laid in concrete. Cutting and mounting is carried out without

hazardous flexing. Scrap pieces left over from processing can be reused as fitting pieces or disposed of easily.

### Geberit GRB air admittance valves

For installations which do not allow for conventional ventilation due to space considerations, Geberit also offers air admittance valves for dimensions of up to DN 100.

- 1 Optimized fittings with sound insulation ribs
- 2 High-tensile connection with electrofusion coupling
- 3 High material thickness for reduced sound: mineral-reinforced PE-S2 plastic



→ Flexible and versatile: fittings for almost every conceivable installation situation.



- Outstanding sound insulation
- Diverse system with many dimensions and fittings
- Hydraulically optimised fittings
- Clean and safe processing without flying sparks
- Few scraps and environmentally friendly disposal

# Geberit HDPE drainage pipes.

## The professionals for the dirty work.

**Enormous temperature change, aggressive waste water, pressure, shifts and chemical influences: wherever high resistance is required for drainage, you in safe hands with Geberit HDPE pipes.**

**Geberit HDPE defies temperatures, pressure and aggressive media**  
The Geberit HDPE drainage system is manufactured using high-density polyethylene (PE-HD), a robust piping material. It is suitable for a number of uses such as industry, commerce or laboratories, for underground installation, in concrete or bridge buildings as well as for house drainage. Hot water does not affect the material at temperatures of up to 80 °C – or even up to 100 °C for short periods and without mechanical load. It is resistant against around 95% of all commercially available alkalis, acids and chemicals. The pipes and fittings also withstand shocks, drops, impacts or pressures of up to 1.5 bar without breakage or permanent deformation. The plastic used is environmentally friendly and 100% recyclable. No toxic emissions whatsoever are released during its processing or in the event of a fire.

**Geberit HDPE – connections with long-term stability**  
Geberit HDPE pipes are available in dimensions ranging from DN 30 to DN 300 and in a wide range of fittings. The pipes and fittings can be connected using butt-welding, electrofusion welding, screw connections or flanges, depending on the purpose.

**Suitable for Geberit system technology**  
Geberit HDPE pipes and fittings are seamlessly integrated in the Geberit system with its fire protection, roof drainage and industrial systems and can be combined with these without difficulty.



- 1 Eccentric reducer
- 2 Access cap for cleaning
- 3 Electrofusion coupling
- 4 Y - branch swept-entry
- 5 Expansion socket
- 6 Butt welding
- 7 Flange connection



← Fittings and connections for a wide range of applications.



- Large range of products and wide range of dimensions
- High temperature and chemical resistance
- Flexible and impact resistant
- Various jointing options
- Environmentally friendly plastic



# Geberit HDPE Sovent.

## Economical and sophisticated drainage of high rise buildings.

**Geberit Sovent fittings for optimised flow enable inexpensive design of discharge stacks in high rise buildings. They increase the pipe capacity many times and get rid of the need to install a parallel ventilation pipe.**

### Tricky task for hydraulics experts

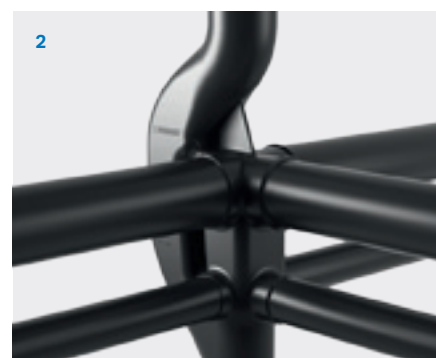
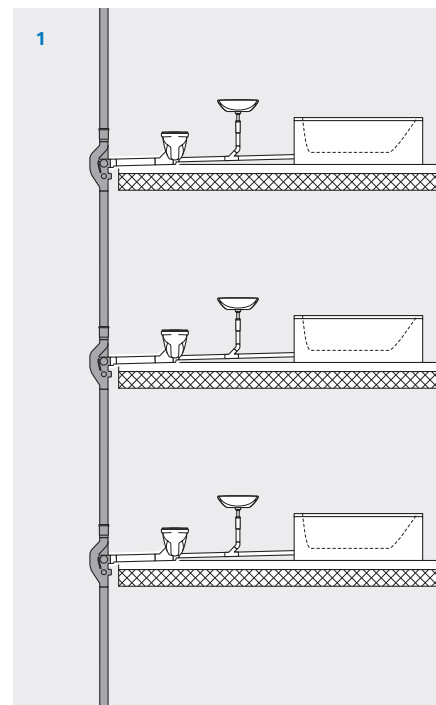
In conventional discharge stacks, very particular fluidic principles come into play above a certain length. Rapidly changing pressure situations could cause the floor pipes connected to the stack to either be suctioned empty by high negative pressure or be blown empty by overpressure. Both situations are extremely undesirable. To prevent this, you will often find many high rise buildings have very generously dimensioned discharge stacks and a parallel ventilation pipe that is connected to the discharge stack at regular intervals.

### Geberit know-how at its finest

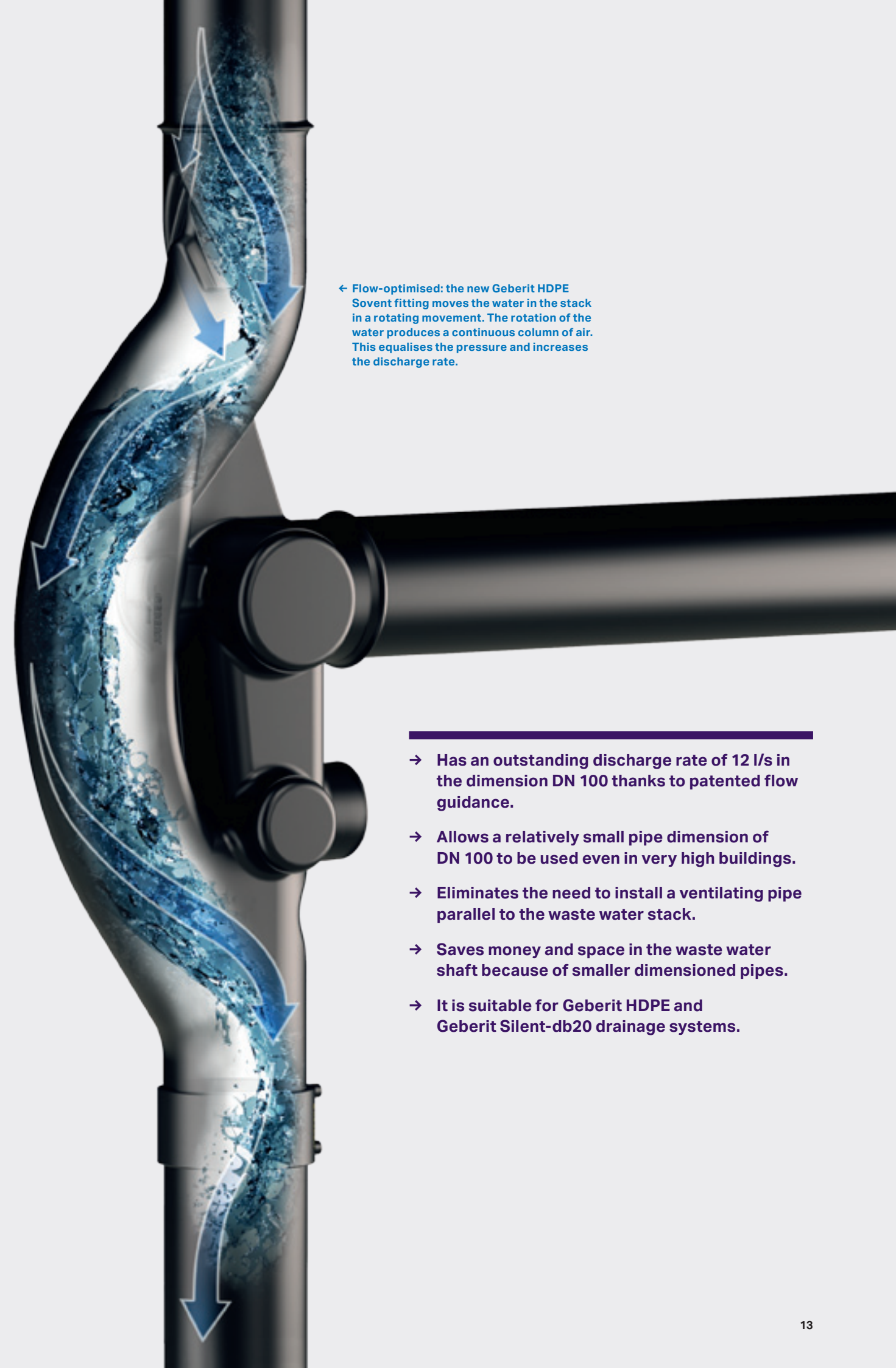
With the HDPE Sovent fitting, Geberit has developed an inexpensive and technically sophisticated alternative to conventional drainage systems in high rise buildings. Geberit HDPE Sovent prevents hydraulic blockages in the discharge stack, thus enhancing flow capacity in the discharge stack. At the same time, HDPE Sovent ensures a supply of air between the branch discharge pipe and the stack. This means there is no need for a parallel ventilation pipe. A partition prevents foam or splash water from getting into the branch discharge pipe.

### Robust and completely system-compatible

Geberit HDPE Sovent is available in two sizes for discharge stacks with a diameter of 110 or 160 mm. The fitting is manufactured from the resistant plastic HDPE and can be welded with Geberit HDPE or Geberit Silent-db20 discharge pipes to form a completely leakproof and pressure-resistant joint.

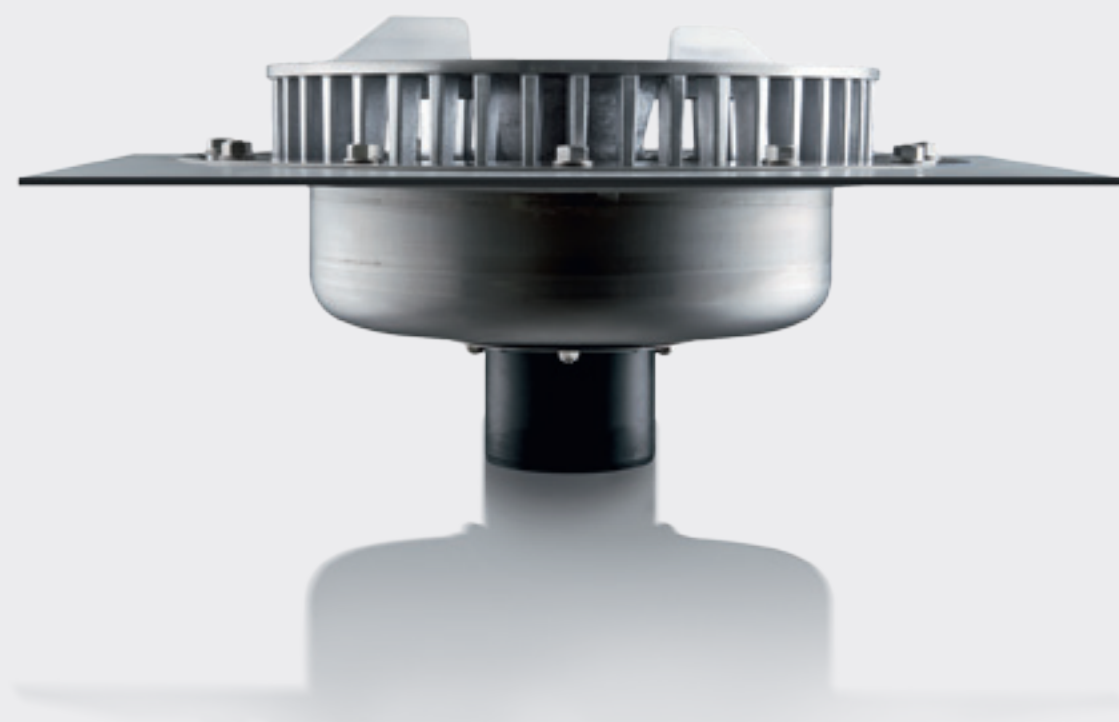


- 1 Building drainage with Geberit HDPE Sovent fittings
- 2 Large number of connection options



← Flow-optimised: the new Geberit HDPE Sovent fitting moves the water in the stack in a rotating movement. The rotation of the water produces a continuous column of air. This equalises the pressure and increases the discharge rate.

- Has an outstanding discharge rate of 12 l/s in the dimension DN 100 thanks to patented flow guidance.
- Allows a relatively small pipe dimension of DN 100 to be used even in very high buildings.
- Eliminates the need to install a ventilating pipe parallel to the waste water stack.
- Saves money and space in the waste water shaft because of smaller dimensioned pipes.
- It is suitable for Geberit HDPE and Geberit Silent-db20 drainage systems.



- **Siphonic roof drainage system for considerably higher discharge capacity**
- **Various dimensions for drainage capacities from 1 to 100 litres/second**
- **Fewer discharge stacks and underground pipes, fewer channel connections**
- **More design flexibility, less planning work load**

# Geberit Pluvia.

## Siphon off rain instead of letting it run off.

**Double the amount of rainwater discharge at half the pipe diameter: for decades, Geberit has set the standards for roof drainage with the Pluvia negative pressure system, giving architects and sanitary engineers more freedom when constructing halls and roofs.**

### **Economical roof drainage using negative pressure**

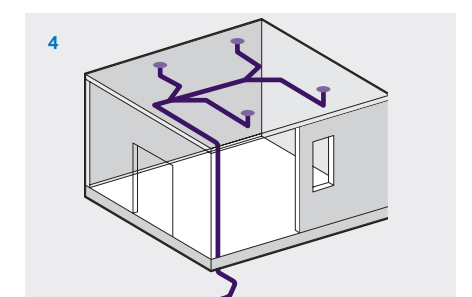
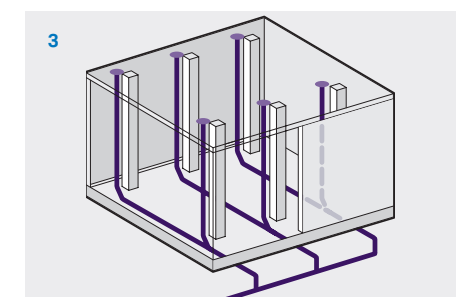
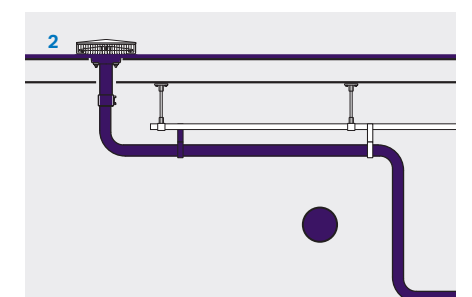
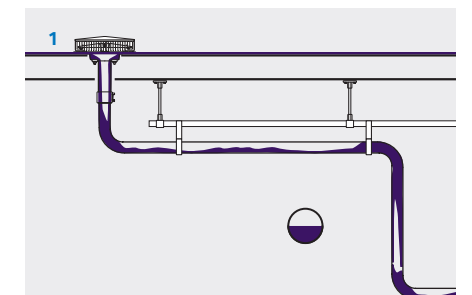
The Geberit Pluvia roof outlets ensure that the relatively small feed pipes and stacks fill quickly when it rains. This creates a closed, quick-flowing water column in the pipes which creates negative pressure. It is therefore not necessary to include a slope for the horizontal collector pipe. The rain water is suctioned away through negative pressure. Additionally, the increased flow velocity even improves the ability of the pipes to self-clean and thus reduces the risk of blockage.

### **More design flexibility, less planning work**

Geberit Pluvia gives the architect more design flexibility compared to conventional roof drainage, since a lower number of roof outlets as well as stacks and underground pipes are required. In addition, it can reduce material costs and the amount of ground work required.

### **Planning with Geberit ProPlanner and Pluvia module**

The Geberit ProPlanner software is suitable for planning roof drainage systems with Geberit Pluvia. Taking into account currently applicable standards, the software calculates the entire system, including fire protection sleeves and sound insulation. It prepares quotation and materials lists as well as a hydraulics list. The isometric graph can be exported to a CAD program and further processed there.



**Fewer pipes, fewer roof outlets: the Geberit Pluvia negative pressure system.**

- 1 Partial filling
- 2 Complete filling
- 3 Conventional
- 4 Negative pressure drainage with Geberit Pluvia



# Geberit Pluvia.

## A proven and versatile system.

**Insulated and uninsulated roofs, inverted roofs, gutters or green roof surfaces: Geberit Pluvia can be used in many construction situations. The three system components – the Geberit Pluvia roof outlet, Geberit HDPE pipe system and the Geberit Pluvia fastening system – provide clear installation advantages compared to conventional roof drainage.**

### A good connection, always and everywhere

Geberit Pluvia roof outlets are suitable for installation in a wide variety of roof constructions. They can be welded tight with plastic or bitumen roof foil. The connection to the Geberit PE discharge pipes is made via a fixed welding joint or the Geberit Pluvia connection pipe which makes installation even easier and more flexible.

### Economical lightweights

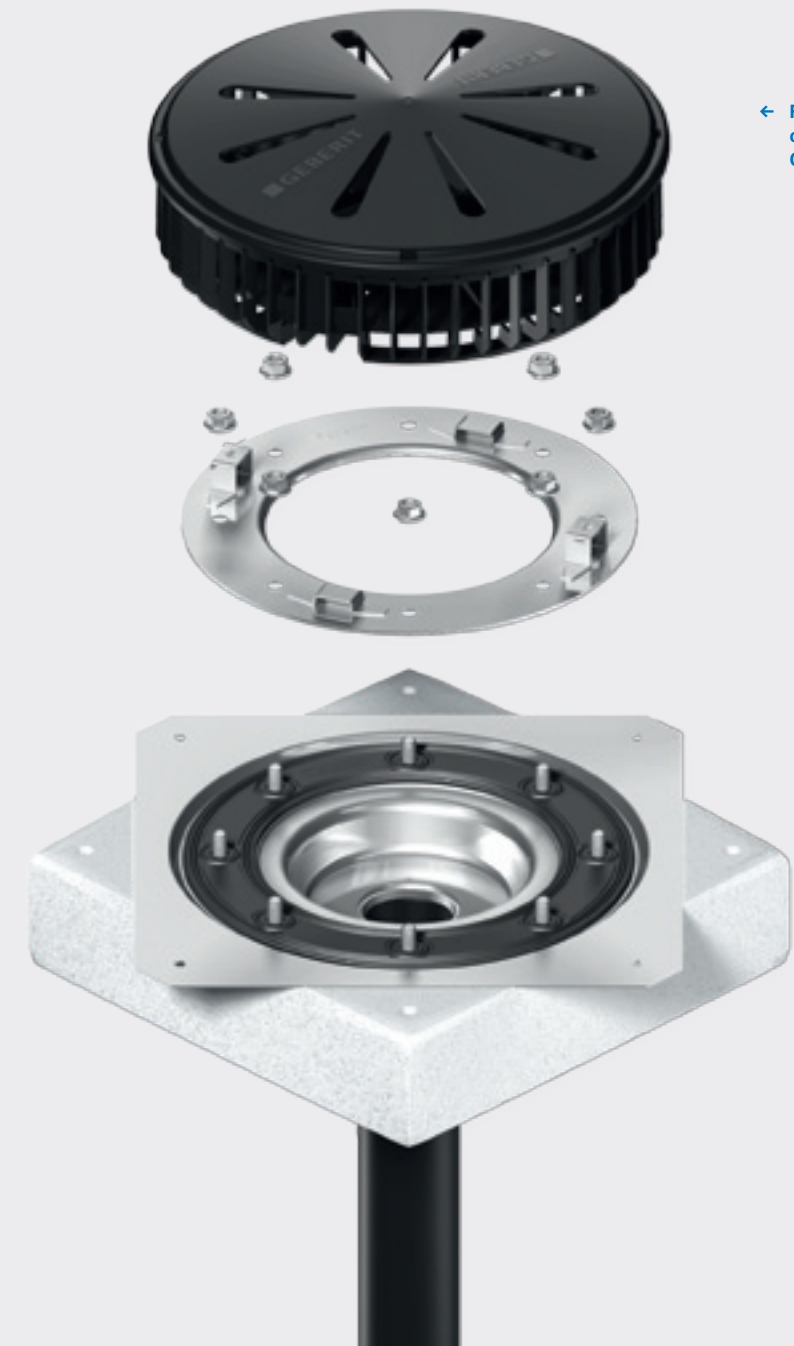
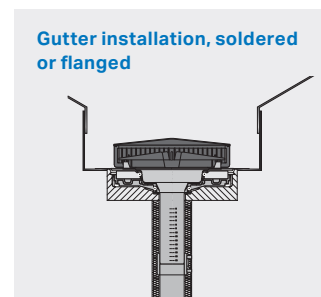
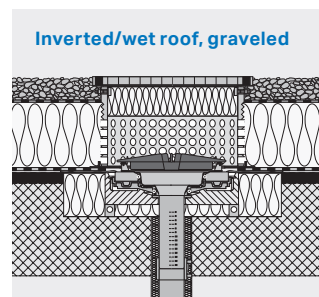
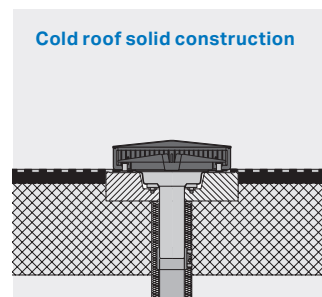
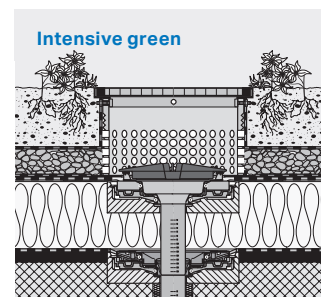
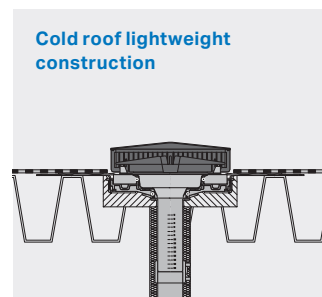
The pipe joints for roof drainage are built with Geberit HDPE discharge pipes. The individual pipe sections are welded together so that the tightness required for negative pressure to occur is ensured. Geberit HDPE pipes are quick and easy to process and are easier to mount at great heights due to their low weight. Individual pipe sections can be prefabricated in the workshop.

### Flexible fastening

The flexible Geberit fastening system makes the installation of horizontal pipe sections particularly easy and safe. A square profile made of steel running parallel to the pipe makes it possible to span great distances with only a few fastenings on the ceiling. The fastening system absorbs thermally caused shearing forces and tensile loads via anchor brackets.

### Safety for all circumstances

To be equipped for frequently occurring heavy rain and resulting static loads on the roof construction, emergency drainage must be provided for. This must direct the water to an area that can be flooded without causing damage



← Flexible response to any construction situation: Geberit Pluvia roof outlet.

- Suitable for all roof constructions
- Low system weight due to small pipe diameters
- Completely welded
- Flexible fastening

# Geberit fire protection and sound insulation.

Built-in safety and convenience.

Geberit offers tried-and-tested fire protection and sound insulation products which are packed with know-how and experience. They guarantee that you and your customers can rest easy.

### Safety in the system

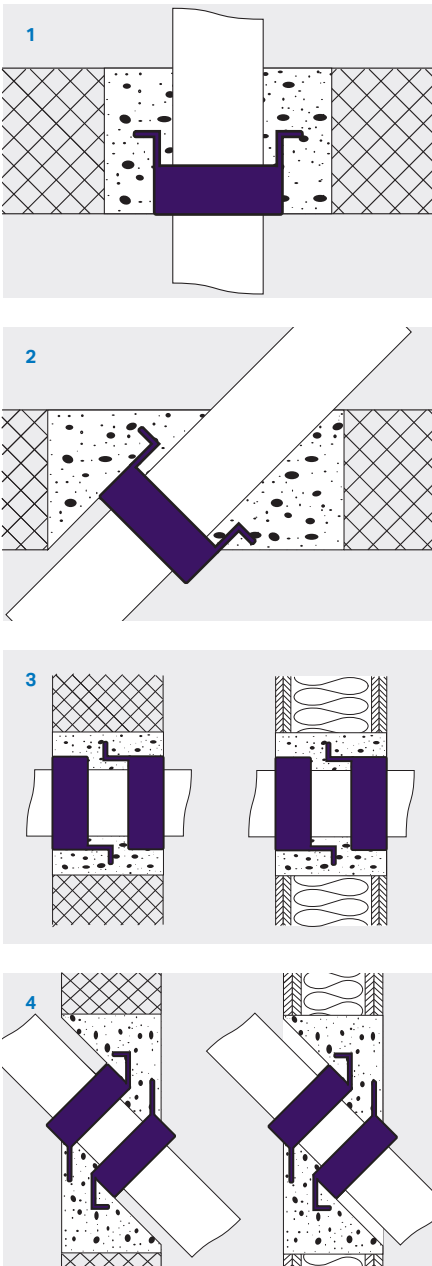
The fire protection and sound insulation of a drainage system are only ever as good as their weakest component. If you combine elements from different manufacturers, you risk compromises at the interfaces. It also makes it more difficult to comply with current standards and regulations. Geberit therefore provides complete systems with a guarantee and the necessary documentation for your project. You can therefore offer your customers a proven high degree of protection against the spread of fire through the discharge pipes. Furthermore, with the sound insulation expertise of Geberit, you can ensure that the drainage water sounds are minimised in private houses, public buildings, hotels and business premises.

### Reliable protection against the spreading of fire.

Wall and ceiling openings as well as installation ducts can make it easier for fires in buildings to spread if they are not closed correctly and in accordance with standards. The Geberit fire protection sleeve RS90 Plus seals the pipe opening in case of a fire and prevents smoke, fire and heat spreading to other rooms or parts of the building. Fire protection sleeve RS90 Plus can be used with all Geberit drainage systems.

### Sound insulation from a single company

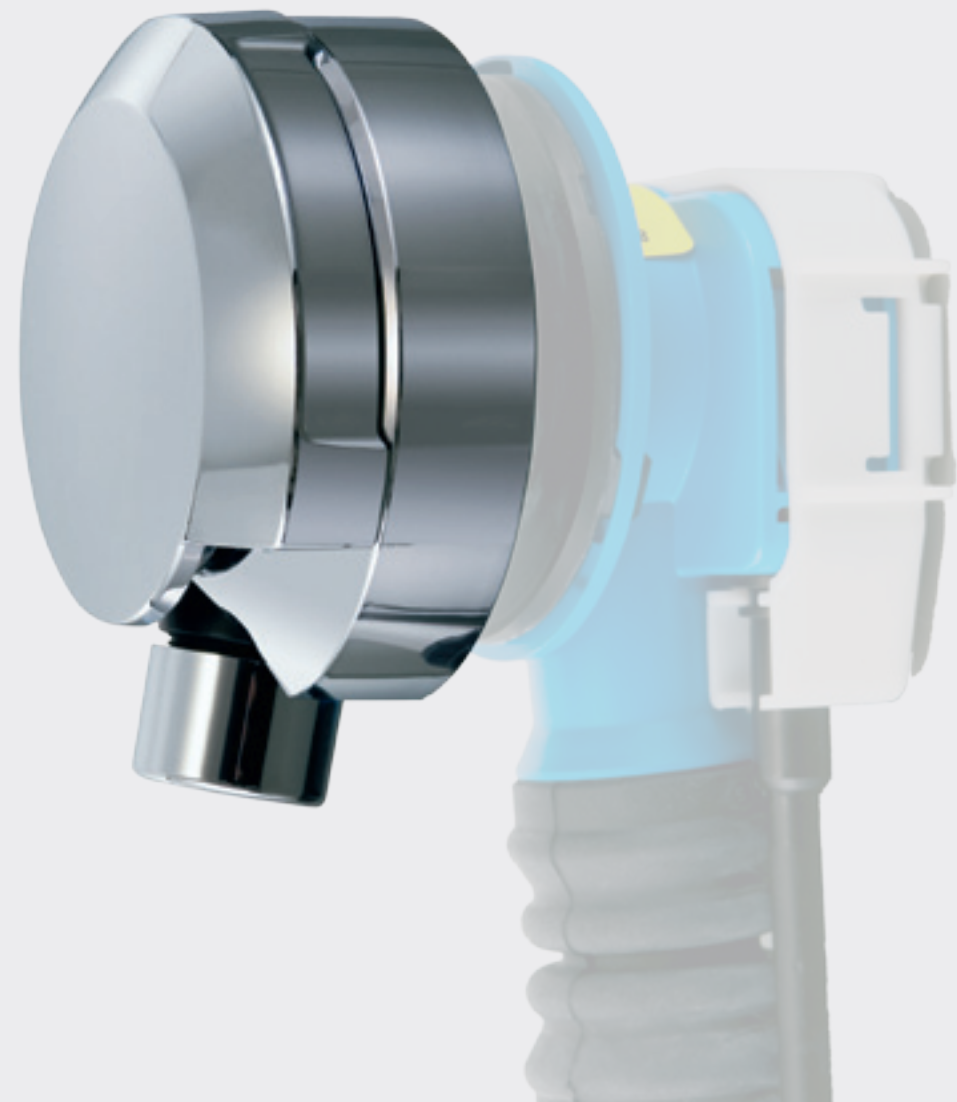
In addition to the optimised sound insulation system, Geberit Silent-db20, intelligent fastening and insulation technologies ensure that the development of noise from waste water remains low. The system pipe bracket for Geberit Silent-db20, the Geberit sound insulation mat Isol, the insulation hose and the self-adhesive sealing tape complete the sound insulation system.



- 1 Installed flush with the ceiling
- 2 Inclined in-ceiling installation
- 3 In-wall installation
- 4 Diagonal in-wall installation

- High level of safety and convenience through comprehensive systems
- Versatile use of Geberit RS90 Plus
- Complete system with system pipe brackets and insulation materials



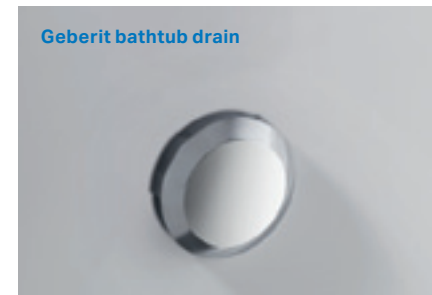


- Intelligent details for easier installation and safety
- Shaped for optimised flow
- Complete range for all areas of use
- Certified in accordance with BS EN 274

# Geberit bathtub inlets and drains. Function in top shape.

Geberit inlets, drains and overflows for bathtubs boast sophisticated details which provide more safety, convenience and functionality, and are a winning choice thanks to their stylish design.

Geberit bathtub drain



## Geberit bathtub drains – intelligent details

The bellows seal on the overflow ensures that installation is safe, easy and tension-free. All-round seals on both sides of the drain and the overflow protect bathtubs of any material from damage caused by corrosion.

## Flow engineering

Traps are shaped for optimised flow, ensuring a high discharge rate and an optimal self-cleaning effect. The flat construction height makes stepping into the bathtub more convenient.

## Complete product range

Geberit bathtub drains are available in different dimensions and in the colours typically used in sanitary rooms: gloss chrome, white alpine, matt chrome and gold-plated – providing the right solution for every type of tub and fulfilling every customer's wish.

Geberit bathtub drain with inlet function



Geberit bathtub drain with PushControl – flat construction height – comfortable to lean against



Flexible bellows seal for tension-free installation



All-round seals on both sides of the overflow ...



... and the drain





# Geberit shower drains.

## Flat profile for high performance.

Geberit shower drains offer high practical value due to their low construction height. They are incredibly easy to maintain and boast excellent drainage capacities.

Geberit d90 shower drain



### Construction height and ergonomics

The traps of the Geberit shower drains have a low construction height which gives the shower tray a flat profile, making it easier for your customer to step into the shower.

### Safety and ease of cleaning

Seals on both sides protect shower trays of different materials from water damage. The trap casing can be easily taken out which makes it easier to clean the drainage pipe.

### Variants

Geberit shower drains are available in all common dimensions and in the colours typically used in sanitary rooms, namely gloss chrome, white alpine, matt chrome-plated and gold-plated.

Geberit d50/60 shower drain



Maintenance and cleaning made easy:  
removable dip tube



Low construction height makes stepping  
into the shower more convenient



- Low construction height for comfortable entry
- Optimum protection for the shower tray
- Easy accessibility makes it easy to clean
- The shower drain for every shower tray.



# Geberit CleanLine shower channels.

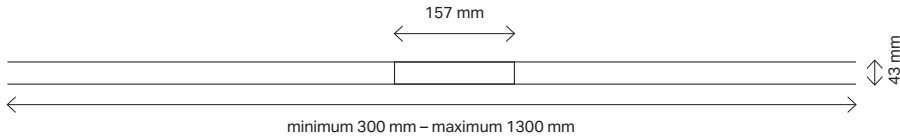
## Our design solution in the floor.

Geberit CleanLine shower channels combine elegant appearance with the easy installation of a floor drain. In addition, the innovative system solves the hygiene problem many shower channels have.

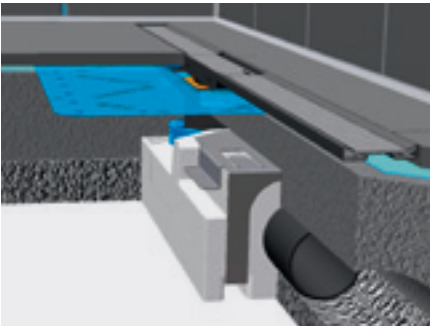


Easy to install and clean

**Top design made easy**  
Shower channels are very popular with their timeless designer lines. Geberit CleanLine shower channels have another big advantage: Thanks to their innovative technology, they are very easy to install – and just as easy to clean.



Stainless steel brushed



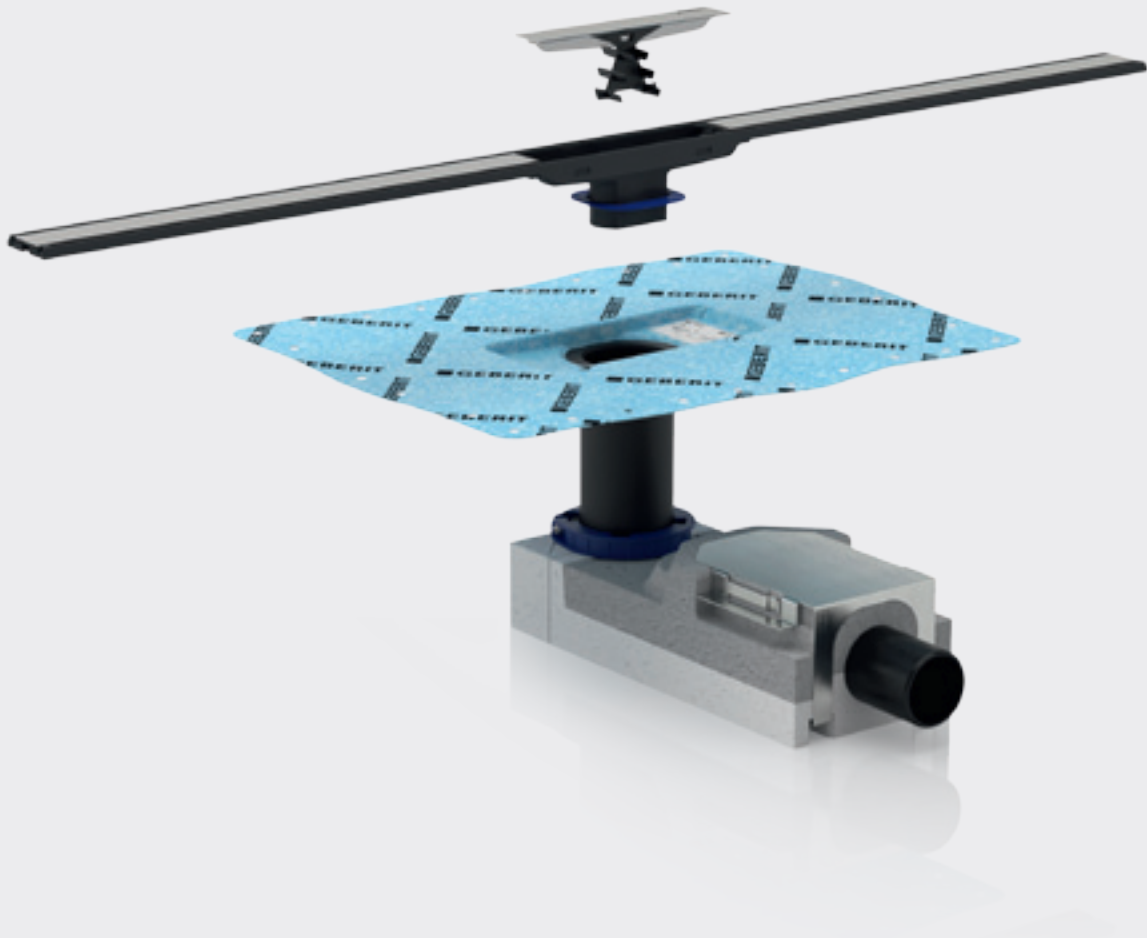
**Very easy installation**  
Geberit CleanLine shower channel have a two-piece design: a collector surface in stainless steel forms the visible part. Below that is a central drain that is mounted exactly like a floor drain. Thanks to the sealing foil injected at the factory, this is firmly connected to the drain and ensures maximum tightness.



**Flexible length and placement**  
Geberit CleanLine shower channel can be cut to length directly at the time of installation in accordance with the individual showering area. The design flows seamlessly with any floor and can be placed either close to the wall or in the middle of the shower area.



**Designed for simplicity and cleanliness**  
Shower channels are often difficult to clean. But not Geberit CleanLine: the dirt flows off the collector surface perfectly. And the comb insert can be removed and washed out in no time at all.



- Unique design with collector surface, comb insert and drain
- Uncomplicated and as reliable as a floor drain
- High customer satisfaction thanks to simple cleaning and modern linear appearance



# Geberit wall drain for showers.

Our design solution in the wall.

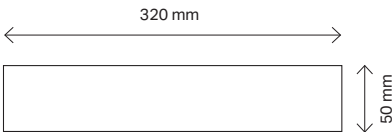
The Geberit wall drain is ideal for wetroom showering spaces. Integrated behind the wall, it is outstanding not only for its elegance but also for its clear added value in terms of planning, installation and maintenance.



A pleasure to the eye – and to the professional

**Not only new constructions**

Geberit wall drain is an excellent answer to the design preferences of the customer, particularly with high-end properties. The potential for utilisation is more versatile than you might think: the system technology makes it possible to implement a wall drain, even with renovations and where available space is limited.



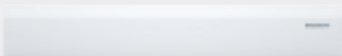
**Colours/product materials**



Gloss chrome



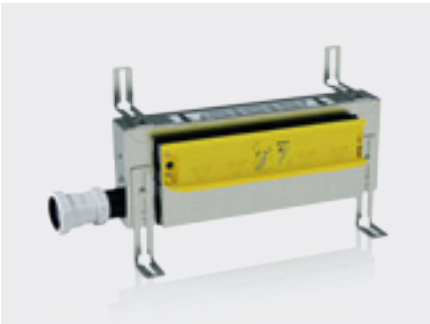
Brushed stainless steel



White alpine

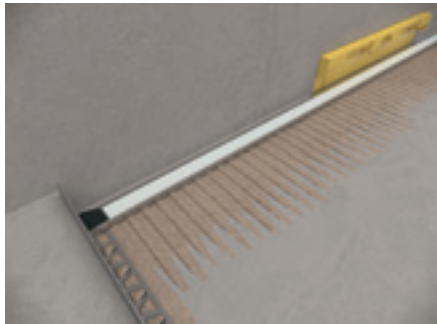


Can be tiled according to preference



**Flexible installation**

The Geberit wall drain makes it possible to place all of the pipe layouts in the wall.



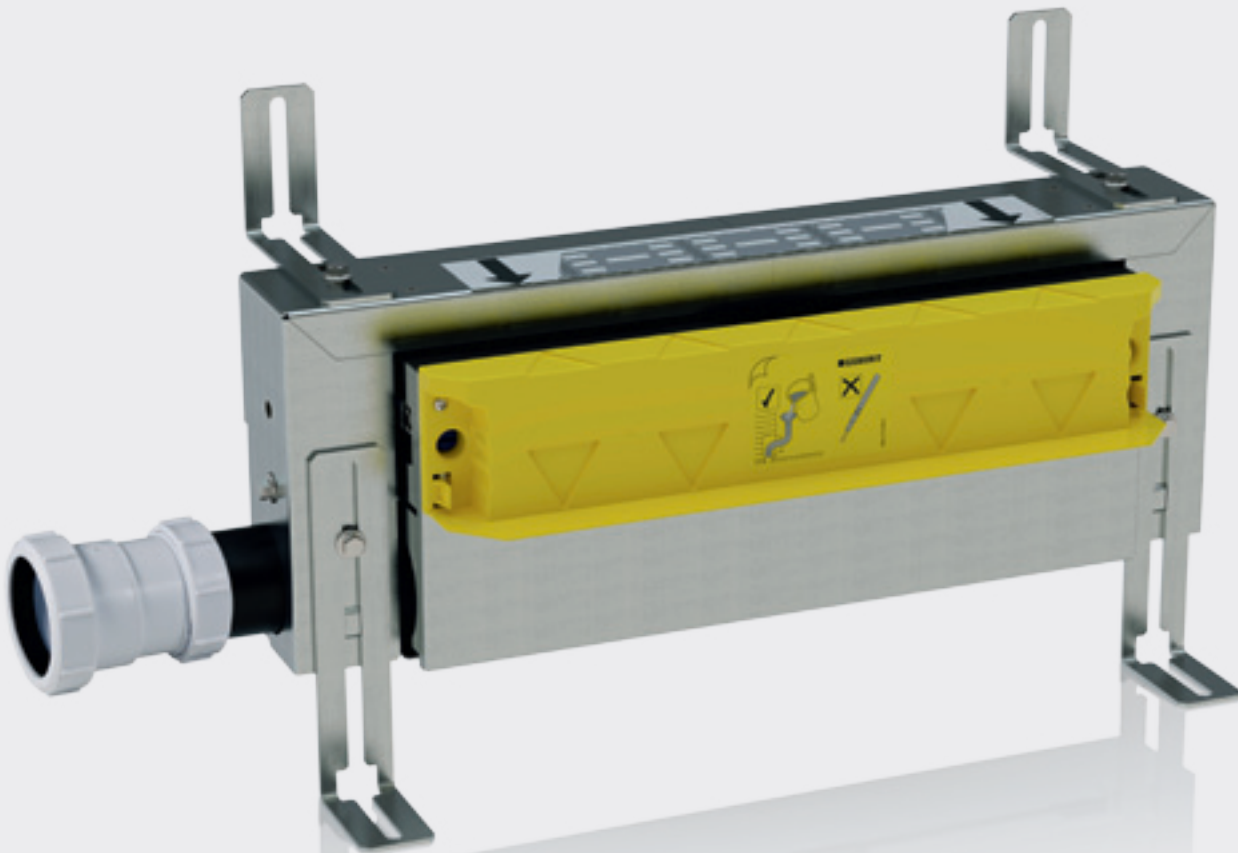
**Well-thought-out all down the line**

The optionally installable collector profile directly in front of the wall supports the slope and collects dirt and deposits so that they can be readily washed away.



**Developed for optimum hygiene**

The Geberit wall drain for shower features an integrated hair trap which can be removed and washed out in no time at all. Cleaning is simple with wall drains.



- Innovative solution for integration in prewall systems
- Clear separation of trades thanks to pipe placement in the wall
- Optional collector profile for efficient and precise formation of the slope in the floor
- Fast and efficient installation



# Geberit floor drain for showers.

Our simple and compact solution.

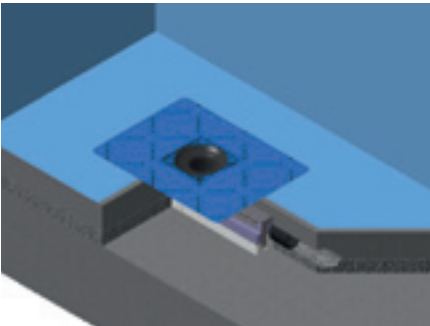
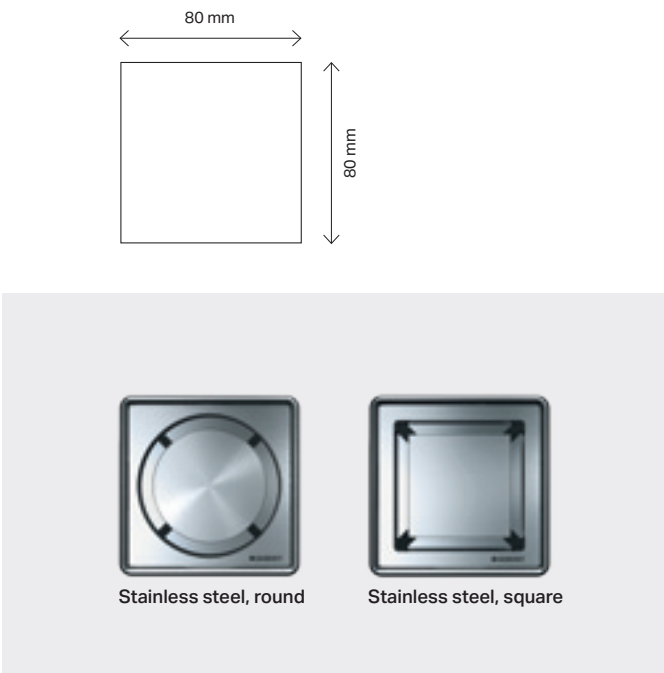
The Geberit floor drain for shower is the universal solution for floor-even showering with clear advantages: reduced design, ingenious function and simple installation.



Unimpeded drain – to the point

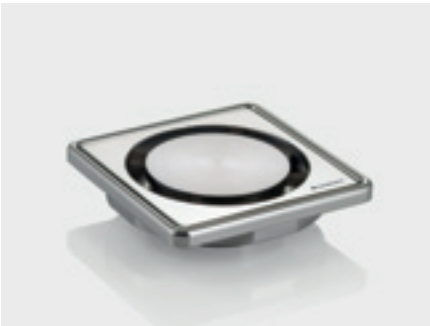
**Big performance in a small package**

Wherever installation needs to be as simple as possible and costs kept as low as they can be, the Geberit floor drain is the perfect solution. The most compact one as well, with only 80 × 80 mm grating area. Hidden under the grating are the great qualities that make Geberit one of the world's leading providers of sanitary technology.



**Problem-free installation**

The proven installation kit for the Geberit floor drain for shower is very efficient in installation and reliable in its result, e.g. thanks to the sealing foil that is already injected at the factory.



**High reduction and precision**

The Geberit floor drain for shower convinces with its very compact construction (only 80 × 80 mm grating area) and with its very high functionality. The height, inclination and offset of the grating can be adjusted to suit the tile grid.



**Always a clean drain**

Under the grating, there is an integrated comb insert which can be easily removed and washed out for cleaning. This effectively prevents clogging in the drain and the discharge pipes.



- Intelligent details for uncomplicated installation
- Design grating made of solid stainless steel
- Easy to clean thanks to integrated comb insert



- Optimised flow
- High level of corrosion resistance
- Easy to install
- Complete product range
- Perfect design for virtually every washbasin

## Geberit washbasin traps.

Drain water quickly and reliably.

Geberit offers an attractive washbasin traps: optimised flow down to the final detail, absolute corrosion-resistant and proven millions of times over.



Geberit direct trap

### Flow engineering

Thanks to computer-animated simulation technology, Geberit washbasin traps are shaped for optimal flow. This ensures that waste water drains quickly and achieves a self-cleaning effect at the same time.

### Plastic – high-quality, durable and easy to install

Geberit traps are produced from a corrosion-resistant plastic. This allows them to achieve a long service life and makes them easier to mount.





# Know-How Installed.

Innovative system technology for professional sanitary installations.

Using Geberit systems means playing it safe: there are no uncertainties resulting from combining components from different manufacturers and no unnecessary material costs or installation workload. Geberit systems also provide a very high level of safety and efficiency, and minimise environmental pollution.



## 1 Geberit cisterns & mechanisms

Exposed and concealed cisterns, clever flush control solutions for urinals and water-saving conversion sets for older cisterns – all of the flush control technologies offer the perfection you have come to expect from Geberit, down to the finest detail. In combination with the Geberit Monolith sanitary modules, the various attractive Geberit flush plates and Geberit urinal flush controls, exceptional flush solutions can be created for WCs and urinals which are a perfect fit for the modern bathroom.



## 2 Geberit installation systems

Support systems and installation elements combine into bathroom walls up to a ready-to-tile surface. No matter if it's a solid wall or drywall, prewall or inwall installation: with Geberit Duofix, you will find the perfect solution for any sanitary application. At the same time, you can be sure you are using efficient, economical and sustainable system technology when fitting and modernising your bathroom.



## 3 Geberit supply systems

The Geberit Mapress and Geberit Mepla pressing systems together with an optimally coordinated assortment of product materials, dimensions and fittings allow for the quick, easy, reliable and economic installation of domestic and industrial supply systems. Naturally, the necessary pressing tools are part of the system. The robust Geberit pressing systems ensure quick and flexible connection.



## 4 Geberit drainage systems

The sound-absorbing Geberit Silent-db20 drainage system for building drainage, the sound-optimised Geberit HDPE system for buried drainage pipes and for use in industry and the laboratory, and Geberit Pluvia syphonic roof drainage can be combined to form complete solutions for drainage. Geberit waste fittings ensure hydraulically optimised and stylish connection to sanitary objects.



## 5 Geberit taps and flushing systems for public facilities

Only really reliable sanitary product solutions can meet the high requirements of public and semi-public sanitary facilities. Electronic and mechanical urinal and WC flush controls and quick-response wash-basin taps ensure hygienic and economical operation.

→ Geberit are masters of their art when it comes to developing practical products. This doesn't happen by accident. For one thing, we apply all of our knowledge and experience to each new innovation and further development. For another, our engineers and product designers can always be found visiting building sites and speaking to plumbers or sanitary engineers. This is how we decide whether or not an idea is viable. This means the know-how of our market partners is incorporated into all our products. "Know-How Installed" – we can all be proud of that.



**KNOW  
HOW  
INSTALLED**



# The future requires an origin. For tomorrow's sanitary technology.

**Geberit wants to sustainably improve people's quality of life with innovative solutions in the field of sanitary technology. To do this, the company is constantly developing its products, systems and solutions further and keeps setting new standards as the market leader in sanitary technology.**

On average, Geberit invests two percent of sales into its own research and development and applies for around 20 new patents every year. Geberit's innovative capacity is based on existing know-how and the ongoing research activities in fields such as hydraulics, statics, hygiene, acoustics, materials and fire protection.

#### **Systematic approach**

A customer requirement or brilliant idea is often the starting point for developing a new product. Meticulous, systematic work then follows, because the innovation process at Geberit does not leave anything to chance. This is why the required characteristics of the product material that will one day go into series production are defined at a very early stage. If such a product material does not yet exist, the product material engineers get to work and develop – in close cooperation with plastic producers, universities and test institutes, of course – a new product material themselves. Although this involves a great deal of time and effort, this procedure has proven worthwhile, for example, in the development of the Geberit Silent-db20 sound-absorbing drainage system, the Geberit Mepla multilayer pipes.

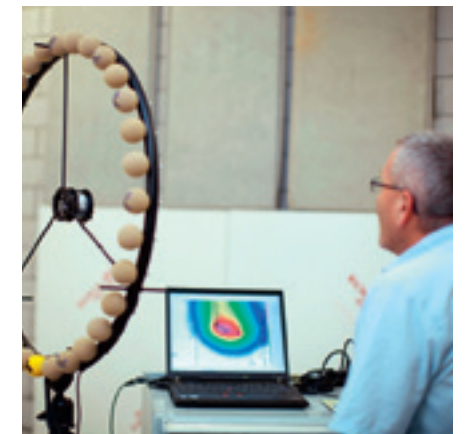
#### **50 years in three months**

As soon as the first prototypes for a new product are available, they are put through their paces. To do this, strict and tough tests are carried out in the sanitation laboratory to simulate a product life of 50 years within three months. Only the best product solutions survive this hardness test. At the Building Technology and Acoustics Laboratory, the static and acoustic characteristics of individual products and systems are checked. Here, experts examine how a particular innovation or improvement behaves in conjunction with other sanitary technology components.

Testing is carried out by the application engineers once the scientists and engineers have given a new innovation the green light. Series production is only considered if the product has proved successful in the market within the scope of numerous test installations.



**New product materials are checked in considerable detail.**



**Sound sources can be precisely determined by an acoustic camera.**

- Above-average innovative capacity thanks to ongoing investment in our own development and research projects
- Reputation for high expertise in numerous fields
- Uncompromisingly high quality and production standards



Geberit Sales Ltd  
Geberit House  
Academy Drive  
Warwick  
Warwickshire  
CV34 6QZ

T 0192 651 6800  
F 0844 800 6604  
Eire +44 (0)1926 516 800  
Literature 0800 007 5133

→ [www.geberit.co.uk](http://www.geberit.co.uk)