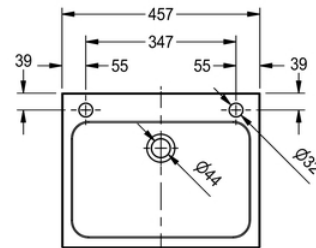
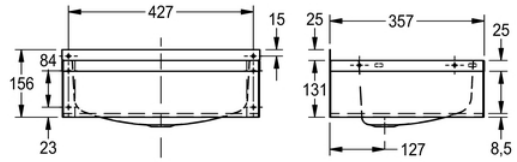


# MODEL WB18 WASHBASIN: D20163N

D20163N | 2000100235

PRODUCT GROUP : Wash basins | ARTICLE FAMILY : Wash basins | ARTICLE GROUP : D20163N



Washbasin top manufactured from 0.9mm thick grade 1.4301 (304) stainless steel - satin polish finish. Prepared for 32mm waste outlet and overflow. Supplied with two tapholes in the rear ledge. Wall mounting by using the fixing holes provided in both the rear upstand and the rear apron fixing brackets. Screws and plugs are not supplied.

With 32mm waste, plug, overflow and chain

CE Certified

## TECHNICAL DATA

bowl - bowl depth	131.00 mm
bowl finish	satin finished
bowl - depth	410.00 mm
bowl shape	rounded rectangle
gross weight	3.30 kg
material	stainless steel
material code	1.4301 Chrome Nickel steel V2A
material thickness	0.90 mm
overall depth	357.00 mm
overall height	165.00 mm
overall width	457.00 mm
overflow	yes
rear upstand	yes
splash back	no
surface finish	satin finished
tap ledge	yes
type of mounting	wall mounting
waste hole position	centre
waste hole projection	127.00 mm
waste kit included	yes

waste size	DN 25
net weight	2.90 kg

# MODEL WB18 WASHBASIN: D20163N

D20163N | 2000100235

PRODUCT GROUP : **Wash basins** | ARTICLE FAMILY : **Wash basins** | ARTICLE GROUP : **D20163N**

---

## ACCESSORY

---



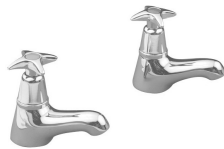
---

**TAP: F1076**

---

2000100385

---



---

**TAP: F1080**

---

2000100386

---



---

**TAP: F1082**

---

2000100387

---



---

**TAP: F1329**

---

2000100392

---