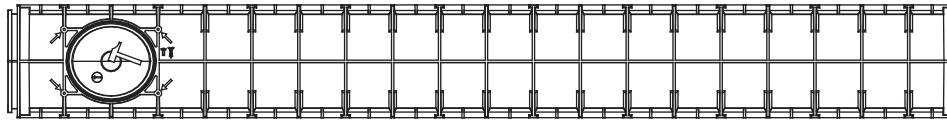




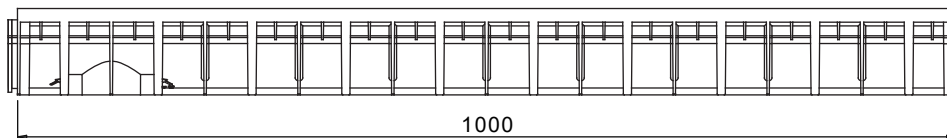
Code  
513000

rev. 00

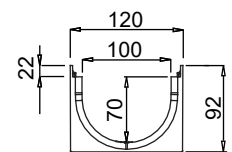
## Channel in HD-PE 4ALL 100/70



BOTTOM VIEW



LATERAL VIEW



FRONT VIEW

Watertight: in order to obtain the channels watertight, it is recommended the use of a bituminous silicone sealant. A through and long- lasting guarantee to avoid any leakages can be obtained by welding the joints.

## Data Sheet

The products have to be installed according to MuffleSystem's specifications (available on our web site)

## Dimensions and features

NB: Dimensions and weights are under normal production tolerances

Lenght (mm)	1000
External width (mm)	120
External height (mm)	92
Internal width (mm)	100
Internal height (mm)	70
Outlets	1 x Ø110 + 1 x Ø75* or 1 x Ø100 + 1 x Ø75*
Material	HD-PE
Weight (Kg)	0.88

\*The outlet is made of "Kit Bottom Outlet".

## Gratings

Slotted	Galvanized steel	Class A15
Slotted	HD-PE	Pedestrian
Slot	HD-PE	Class A15