

Uniclass	EPIC
L384	C44
C/SfB	
(22.3)	X

Heights (mm):	3600	3300	3000	2700	2400	2100	1800	1500	1200	900	600	300
Elevations:												
Widths (mm):	300	400	500	600	700	800	900	1000	1100	1200	1300	1400

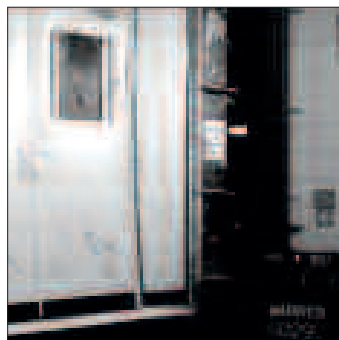
Double skin steel partitioning

With 144 sizes / combinations of panel offered as standard and many more special elevations available upon request Elan is a truly flexible partitioning system. Elan panels can also be supplied in a fully fire rated version to BS476: part 22: 1987, and also with noise reduction capabilities.

Panel weight ~18Kg/m Panels can be pre-glazed in the factory or glazed on site.

ADVANTAGES

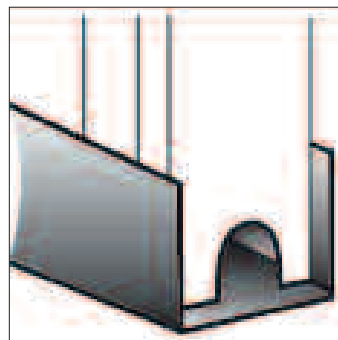
Fully demountable partitioning with an established range of features/accessories.



Elan panels have the option of a fire rated version which has been tested to BS476: part 22: 1987

APPLICATIONS

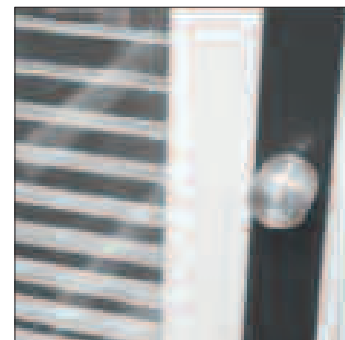
Suited to many applications including: Office divisions and factory offices.



Elan has been designed with the facility to run wires / data cables through the panel / panel joints and floor track.

FEATURES

Elan can be multi tiered. Fire ratings can be achieved to BS476: part 22: 1987, and the system is certified for sound reduction (see over leaf for details).



Blinds can be integrated in double glazed panels.



Elan panel skins are manufactured using 0.7mm thick CR4 mild steel



Panels are coated with a TGIC & lead free polyester powdercoat.



Fire rated panels are in-filled with Rockwool. Non fire rated versions include a honeycomb in-fill.

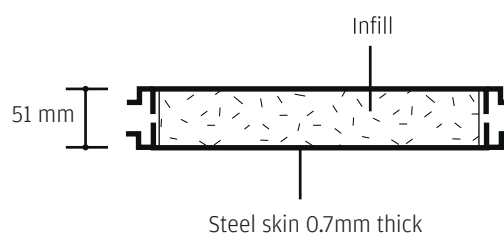


Glazed panels use 6.4 mm laminate glass and are available in single and double glazed.

Fire rated option

All panels in-filled with Rockwool, glass is wired or alternative fire rated type.

All steel panel x 900mm	1 hour fire rating
Steel / glass / steel panel x 900mm	Half hour fire rating
Steel / glass panel x 900mm	Half hour fire rating
Steel / double glass / steel panel x 900mm	1 hour fire rating
Standard door with vision panel	1 hour fire rating



Note:

This test is for integrity, not insulation and applies only to the elevations tested. Single glazed panels have square screwed beading. Double glazed panels have standard beading. Skirting is steel. Joints to floor, walls, ceilings and mullions need to be sealed with intumescent mastic (Steel doors also available with fire ratings. Please see supporting information sheet).

Sound reduction option:

Elan provides an average sound reduction of 32dB over the various elevations. All tests conducted in accordance with BS 2750 : Part 1 : 1984. Copies of the detailed report are available upon request.

ACCESSORIES OPTIONS

Standard polyester powder coatings (Matt Finish)

Sandstone - BS.08.B.17

Grey - BS.00.A.05

Grey - RAL 7037

White - RAL 9010

Blue - RAL 5010

Non standard and corporate colours are also available upon request.

- Hinged and sliding doors, all with a variety of locking options available
- Range of compatible ceiling systems - Steel panels, composite panels and suspended tile ceilings.
- Blinds fitted within double glazing
- Sliding glass hatches

LEE
MODULAR STEEL WALLS

Lee Manufacturing Ltd Building 52, Third Ave., Pensnett Trad Est, Kingswinford, West Mids, DY6 7XF.
Phone: +44 (0)1384 277 441 Fax: +44 (0)1384 273 627 Email: info.uk@troax.com Web: www.leewalls.co.uk