



PVC-U System

Curtain Walling

EpwinTM
window systems

The ideal choice

The purpose-designed Epwin Window Systems Curtain Walling System combines quality, sustainability, aesthetics, price and performance - it is the ideal choice for education buildings, offices, hospitals, factories, shop fronts, large stairwell screens and other commercial developments where large areas of fenestration are required.



A versatile and cost-effective solution

The system takes spandrel panels and accommodates most 70mm glazing systems. Window frames, panels and cover caps are fitted post installation, which minimises the risk of damage on site. If a glazed unit or panel needs to be replaced, it's a simple task that can be carried out from inside, eliminating the need for scaffolding.



Impressive aesthetics

This aluminium system is PVC-U clad both internally and externally, which means colours and materials can perfectly match a building's windows for a seamless end result. Window frames, cover caps and cladding can be painted in any combination of RAL colour finishes, to create a contemporary facade that enhances the local environment.



Quality assured

This is a high performing thermally broken aluminium system that offers superior strength and thermal performance. Results for weather tightness achieved the equivalent of three times the severe weather ratings for water tightness and the system withstood wind loads in excess of 140 mph.



NBS Source

The NBS database includes the Curtain Walling System. Available at source.thenbs.com



NBS Source
PARTNER





A truly British heritage

The Curtain Walling System is produced by Epwin Window Systems, the UK's largest systems house with a track record stretching back nearly 50 years.

We offer the widest portfolio of fully integrated window and door systems, a choice of leading brands, with unrivalled expertise and support to grow your business.

We firmly believe in continuous investment in our production facilities and operations. Our approach means we are able to provide the levels of quality and reliability you have a right to expect.

Our products are designed and manufactured in Britain for the British market. We are active in trade and industry bodies and we take a leading stance in environmental initiatives. Our commitments mean you are able to rely on us to be a proactive partner that adds value to your business.

Because when you work with Epwin Window Systems you get more options and more possibilities.

**MADE IN
BRITAIN** 

Curtain Walling System

A flexible and versatile solution.

The Curtain Wall System is suitable for a wide range of applications including new build and refurbishment projects in the domestic, commercial, industrial, education and healthcare sectors. It is perfect for large glazed screens and stairwells as well as building envelopes.

Features and benefits

- ☐ Ideal for stairwells and glazed screens
- ☐ Ideal for refurbishment projects
- ☐ Suitable for domestic and non-residential use
- ☐ Improves building aesthetics
- ☐ Fully compatible with 70mm systems
- ☐ Accommodates spandrel panels
- ☐ Glazing and panels fitted from inside
- ☐ Engineering grade aluminium sections to BS1474
- ☐ Polyamide thermal break with $0.168 \text{ W/m}^2\text{K}$ conductivity
- ☐ Fully accredited and BSI tested
- ☐ Can be painted in any RAL colour
- ☐ Tested to withstand winds in excess of 140mph.



Product features

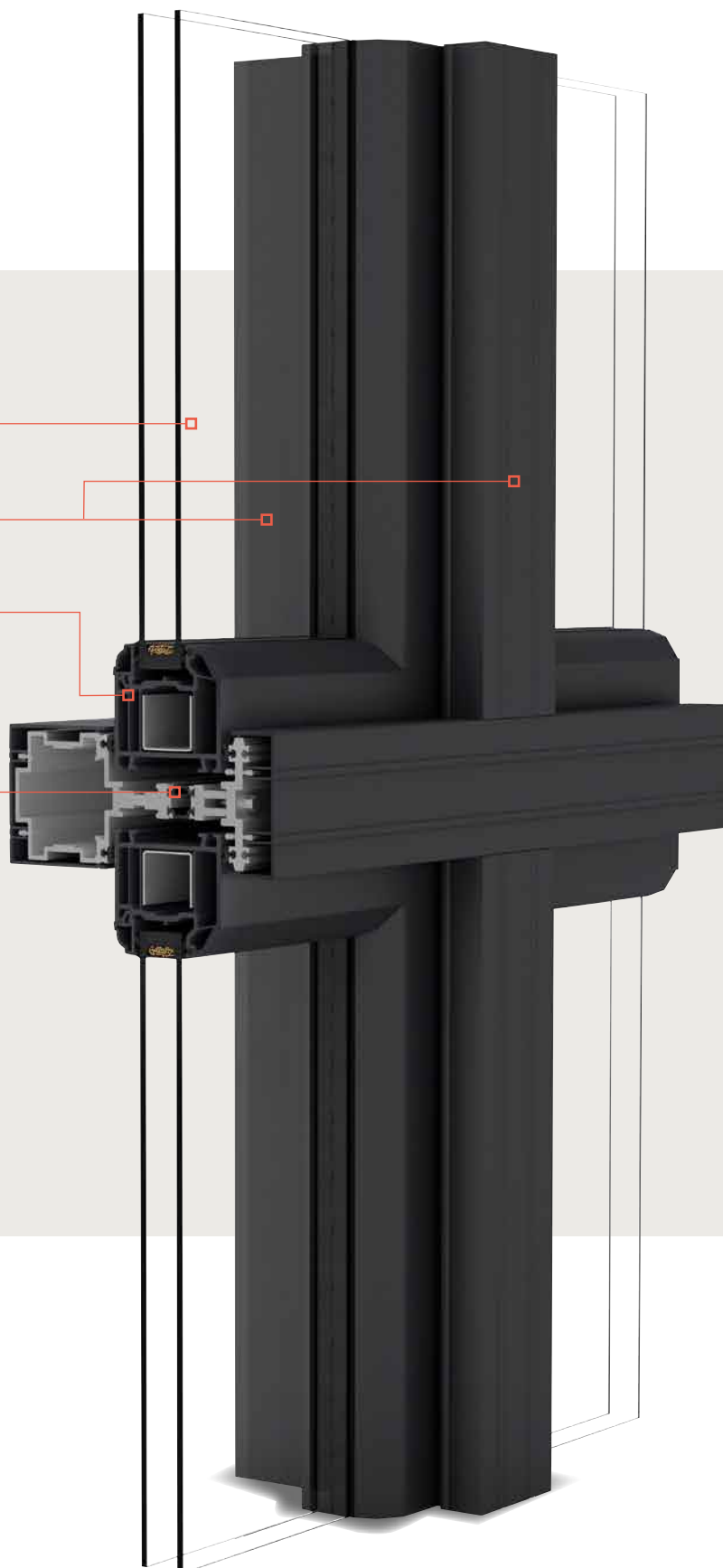
- 1 Accepts direct glaze insulation or spandrel panels
- 2 Internal & external PVC-U cladding available in wide range of colours
- 3 Accommodates the full range of 70mm window and door systems
- 4 Integral thermal break

Weathering Performance

The system was tested to BS 5368 parts 1, 2 and 3 and achieved the following classification for weathertightness.

- ☐ Air permeability 600Pa
- ☐ Water tightness 1000*Pa
- ☐ Wind resistance 3000Pa

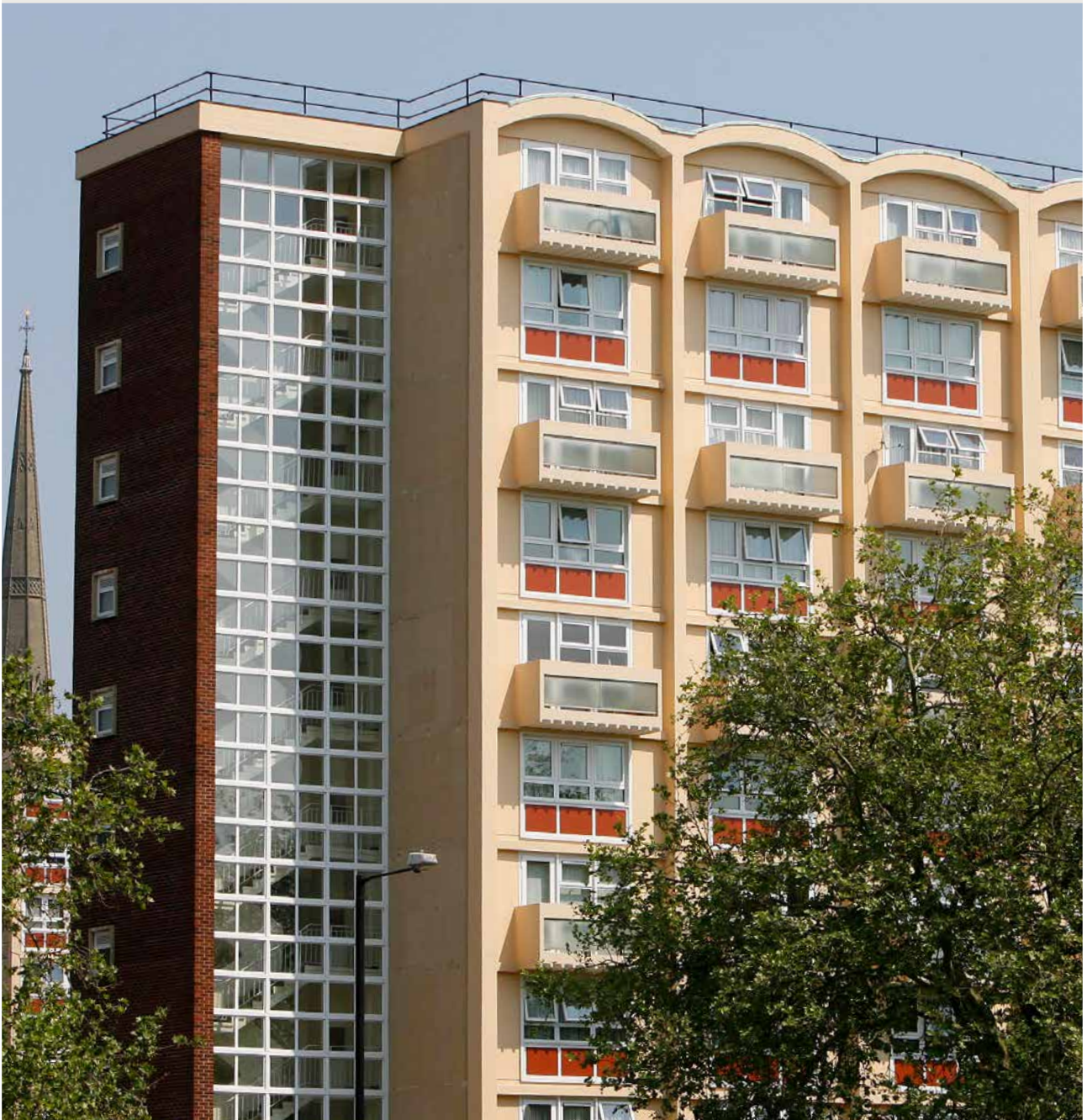
* Sample showed no sign of leakage up to 1000Pa



Specifier Preference

This system can accommodate the full range of 70mm window and door systems for a wider choice of product, and to make replacement of individual glazed units easier in the event of damage or breakage.

Specifiers can choose from direct glaze insulation or spandrel panels. Importantly it offers long-term maintenance and cost benefits.



Accreditations and Testing

The Curtain Walling system is Secured by Design accredited, giving peace of mind to the end-user. Windows have been tested and approved to PAS 24 (enhanced security performance requirements for doorsets and windows in the UK). The system is manufactured to BES6001, ensuring that its constituent materials have been responsibly sourced, and allowing additional points under BREEAM.



BS EN ISO 9001

BSI Registered firm scheme: Quality Management Systems.



BS EN ISO 14001

Manufactured under an ISO 14001 Registered Environmental Management System.



BS ISO 45001

Occupational Health and Safety Management Systems.



BS EN 12608

PVC-U Profiles for the Fabrication of Windows and Doors.

KM 12895
BS EN 12608
PVC-U Profiles for the Fabrication of Windows and Doors



BS EN 12608/PAS 24

Enhanced Security Window System Supplier.

KM 33523
BS EN 12608 / PAS 24
PVC-U Profile - Enhanced Security Window System Supplier



BS EN 12608/PAS 24

Enhanced Security Door System Supplier.

KM 56791
BS EN 12608 / PAS 24
PVC-U Profiles - Enhanced Security Doors System Supplier



BS 8529/PAS 24

Enhanced Security Composite Door System Supplier.

KM 594776
BS 8529 / PAS 24
Enhanced Security Composite Door System Supplier

Secured by Design



Official Police Security Initiative

Secured by Design

The UK Police initiative supporting the principles of 'designing out crime' by use of crime prevention and security standards.



VinylPlus

A labelling scheme to identify the most sustainable and high-performance PVC-U products.

Material Specification

Material specification was also tested to BSI standards and achieved the following results at the Institute:

- ☐ Aluminium profiles to BS1474 - Specification for wrought aluminium and aluminium alloys for general engineering purposes
- ☐ Aluminium alloy 6063 T6
- ☐ Thermally broken aluminium sections to have Chromium Phosphate finish
- ☐ Polyamide thermal break has a thermal conductivity of 0.168 W/m²k.

The curtain wall system from Epwin Window Systems combines quality, sustainability, aesthetics, price and performance – making it the ideal choice when creating large areas of fenestration.



For more information about Epwin Window Systems products visit

www.epwinwindowsystems.co.uk



EpwinTM
window systems

Epwin Window Systems is a manufacturer of PVC-U and aluminium profile systems, supplied to independent manufacturers and installers who contract to install windows, doors and conservatories. Epwin Window Systems cannot be held accountable for manufacture or installation by independent companies. All information in this publication is provided for guidance only and is given in good faith. As it is company policy to continually improve products, methods and materials, changes of specification may be made from time to time without prior notice. This statement does not affect your statutory rights. © Epwin Window Systems. Part of the Epwin Group Plc. EWS/18520