

PVC-U System

# Flush Tilt & Turn Windows



**Epwin**<sup>TM</sup>  
window systems

# The ideal window solution for medium and high-rise buildings

The Flush Tilt & Turn Window System is a 70mm system that offers an outstanding alternative to aluminium systems on medium and high-rise buildings and where large-scale windows are required.

It offers a clean, streamlined appearance with an externally flush design because the sash sits inside the frame. It sits alongside our other established commercial systems - the Fully Reversible Window, Curtain Walling, Two-Part Cill and more. The range of colour options means it can fulfil every design brief while the comprehensive ancillary range is the largest on the market, taking its versatility even further.

At the same time, it is a wonderfully practical system. The security, thermal efficiency and weather tightness are exceptional. The tilt-in facility delivers effective ventilation while the turn facility enables easy, safe cleaning.

**Quite simply, it's a window system that ticks all the boxes.**

## Intelligent functionality

The Flush Tilt & Turn Window System opens internally. In tilt mode, it offers secure ventilation, an important factor in ground floor installations. In turn mode, it enables cleaning to be carried out without risk, essential in high-rise settings. The tilt & turn gearing prevents the window being switched to turn mode directly from tilt mode and vice versa, which enhances safety. Anti-slam is fitted as standard and restrictors can be fitted for extra safety in medium-high rise buildings.



*Tilt mode –  
top ventilation  
position*



*Turn mode  
– maximum  
ventilation and  
ease of cleaning  
outside pane*



## A truly British heritage

The Flush Tilt & Turn Window System is produced by Epwin Window Systems, the UK's largest systems house with a track record stretching back nearly 50 years.

We offer the widest portfolio of fully integrated window and door systems, a choice of leading brands, with unrivalled expertise and support to grow your business.

We firmly believe in continuous investment in our production facilities and operations. Our approach means we are able to provide the levels of quality and reliability you have a right to expect.

Our products are designed and manufactured in Britain for the British market. We are active in trade and industry bodies and we take a leading stance in environmental initiatives. Our commitments mean you are able to rely on us to be a proactive partner that adds value to your business.

Because when you work with Epwin Window Systems you get more options and more possibilities.

**MADE IN  
BRITAIN** 



# A stylishly practical solution

The Flush Tilt & Turn Window System has been designed so that the sash sits flush inside the frame of the window. It creates a sleek 'flush' appearance and avoids the overlapping synonymous with PVC-U systems.



## Aesthetics

- Modern urban design
- No external overlap of frame
- Available in a range of 30 colours including dual options
- Choice of complementary base colours
- No unsightly cover caps
- Concealed hinges and gearing



## Practicality and versatility

- Design flexibility with maximum opening size up to 1390 x 2326mm
- Perfect for medium-high rise buildings
- 3-dimensional adjustment of the pivot post
- Easily adjustable pivot post and stay hinges



## Safety and security

- Safe operation – cannot move directly from tilt to turn
- Anti-slam technology as standard
- Accommodates safety restrictors
- Sash lifter as standard on sashes above 640mm height
- Extra security around hinge points



## Thermal efficiency

- Achieves WER A++
- Designed to achieve 0.8 W/m<sup>2</sup>K with triple glazing
- 28, 36 & 44mm glazing options
- High-performance centre seal system
- Optional third weather seal
- Six-chambered sash and five-chambered outer frame with Aeroframe™ technology
- Recycled composite outer frame reinforcement



## Embracing technology

NBS allows you to save time in the specification process without compromising on quality. All of the information that is required to enable you to specify is available including BIM objects and certifications.

[source.thenbs.com](https://source.thenbs.com)

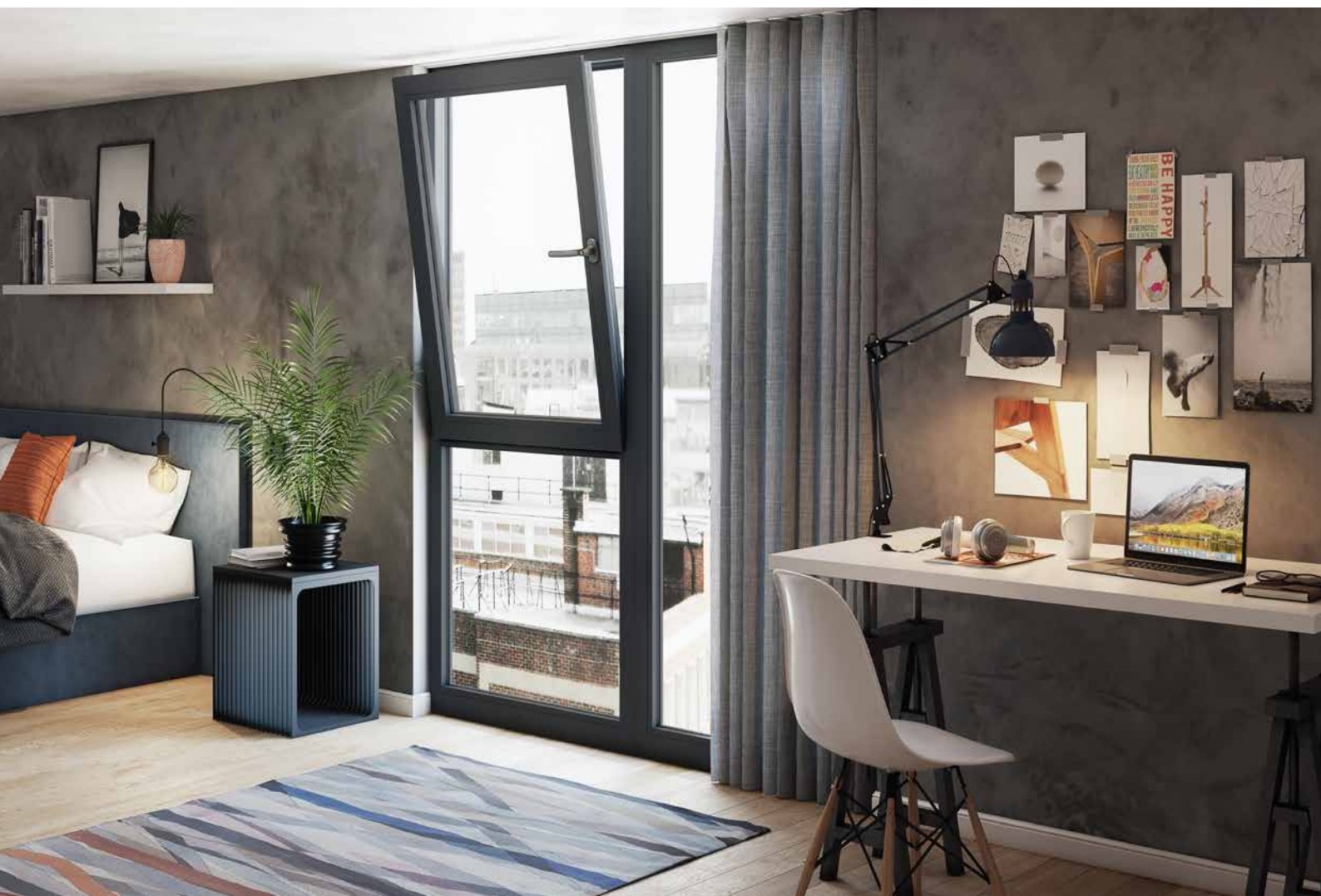




# Flush Tilt & Turn Window System

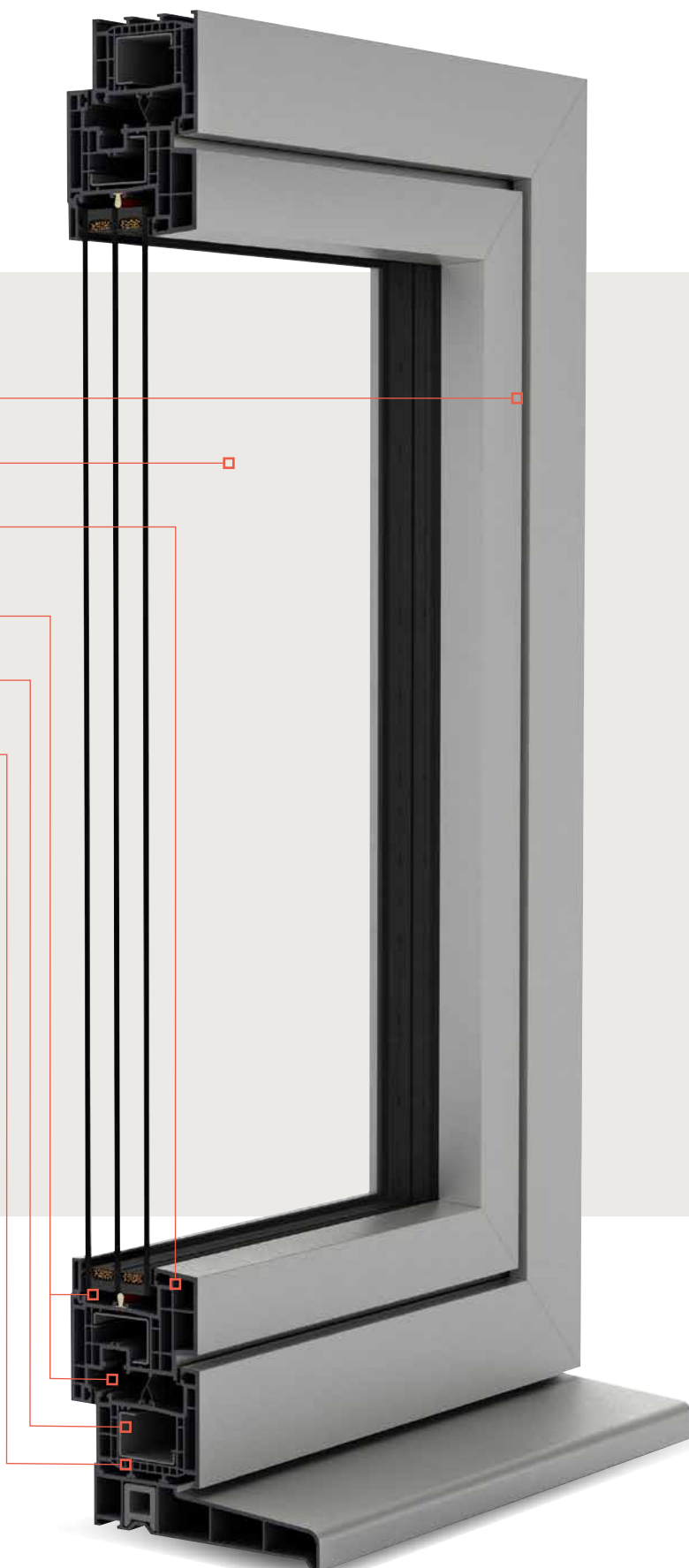
A system that meets the most demanding requirements.

As well as its sophisticated appearance the Flush Tilt & Turn Window System also benefits from all-round locking, internal glazing, inward opening and excellent security and weather tightness.



## Product features

- 1 Concealed hardware
- 2 28, 36, or 44mm glazing options
- 3 86mm deep sash
- 4 Optional centre seals in sash & outer frame
- 5 RCM Inserts
- 6 Patented Aeroframe<sup>TM</sup> technology



# Ancillaries

## A unique range of ancillaries.

The Flush Tilt & Turn Window System has the largest range of ancillaries on the market so you can achieve a perfectly fitting project every time. Uniquely, every item in the range works across all our systems, reducing stockholding while extending versatility.

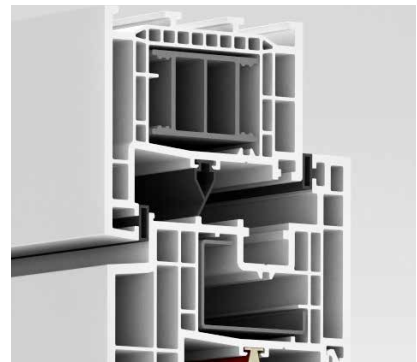
### Cills

Cills are available from 85mm to 225mm and include steel and recycled composite options. They all use a single reinforcing size to help reduce stockholding.



### Thermal Inserts

Made using recycled material, Epwin Window Systems thermal inserts achieve better U-values and WERs without the cost of the most highly insulating sealed units. They are added to the outerframes during fabrication and effectively increase the number of insulating chambers in the profiles.



### Couplers

Couplers are available in a range of sizes from 3mm to 29mm.

### Packers

Packers are available in four sizes from 15mm to 50mm.



# Range of reliable hardware

Attention to detail is in evidence everywhere you look on the Flush Tilt & Turn Window System. Fully concealed hinges create a sleek aesthetic. To make installation quicker and easier, there's 3-dimensional adjustment of the pivot post, lateral adjustment of stay hinges and pivot post without loosening screws and no need for cover caps.



## A demonstration of product excellence.

When it comes to sourcing the hardware for the Flush Tilt & Turn Window System, the Epwin Window Systems brand, Safeware, offers a complete hardware range that's compatible with the Flush Tilt & Turn Window System.

Safeware is one of the UK's leading suppliers of hardware to the industry and its range includes household name brands and trusted specialists, all renowned for long-term performance and reliability.

It's clear evidence of Epwin Window Systems' commitment to supporting fabricators and installers every step of the way.



# The Colour Collection

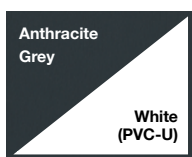
Colour is an essential component of a modern window system and the Flush Tilt & Turn Window System doesn't disappoint.

It features a wealth of colours including modern classics such as Anthracite Grey and classics of the future such as Claystone. Dual colour options are also available, bringing the option of different interior and exterior colours. We use complementary base colours of white, grey, brown, tan and cream to deliver next-level aesthetics.

Our most popular requested colours are available direct from stock. Our Made to Order service reduces lead times for shades that aren't in stock and the minimum order quantity is a single length, making colour an option for every project. For all our colour options, rigorous manufacturing processes and state-of-the-art facilities mean outstanding quality and durability are guaranteed.

## Stock Colours

White PVC-U Base

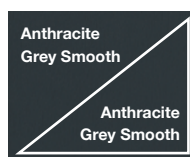


## Fast Track Colours

White PVC-U Base

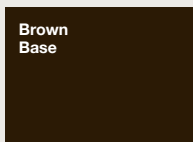


Coloured Base



## Base Colours

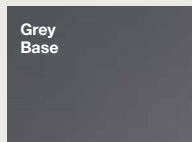
Brown Base



White Base



Grey Base





# Made to Order Colours

Our made to order colours are available foiled on one side with a white base, foiled on both sides on a complementary base colour or foiled with different colours either side with a choice of any base colour.

## White Base

Cream	White Woodgrain
Claystone	Dark Red
Pebble Grey	Steel Blue
Windsor	Dark Green
Sage Smooth	
Agate Grey	
Chartwell Green	

## Brown Base

AnTeak	Irish Oak
Swamp Oak	Honey Oak Super-Matt
Rosewood	Light Oak
Black Brown	Pyrite
Flemish Gold Smooth	

## Grey Base

Black Ulti-Matt	Slate Grey
Silver D Smooth	Anthracite Grey
Hazy Grey Finesse	Anthracite Grey Smooth
Kensington Grey	
Buckingham Grey	
Basalt Grey Smooth	
Slate Grey Finesse	



# Security benefits

A fully accredited system.

The Flush Tilt & Turn Window System has features such as a multi-chamber profile that allows for fully enclosed reinforcement and extra security around hinge points.

It means the Flush Tilt & Turn Window System meets the requirements of PAS 24:2022 and can achieve the requirements of the UK Police-endorsed Secured by Design accreditation when required.

**Secured by Design**



**Official Police Security Initiative**





# Thermal performance

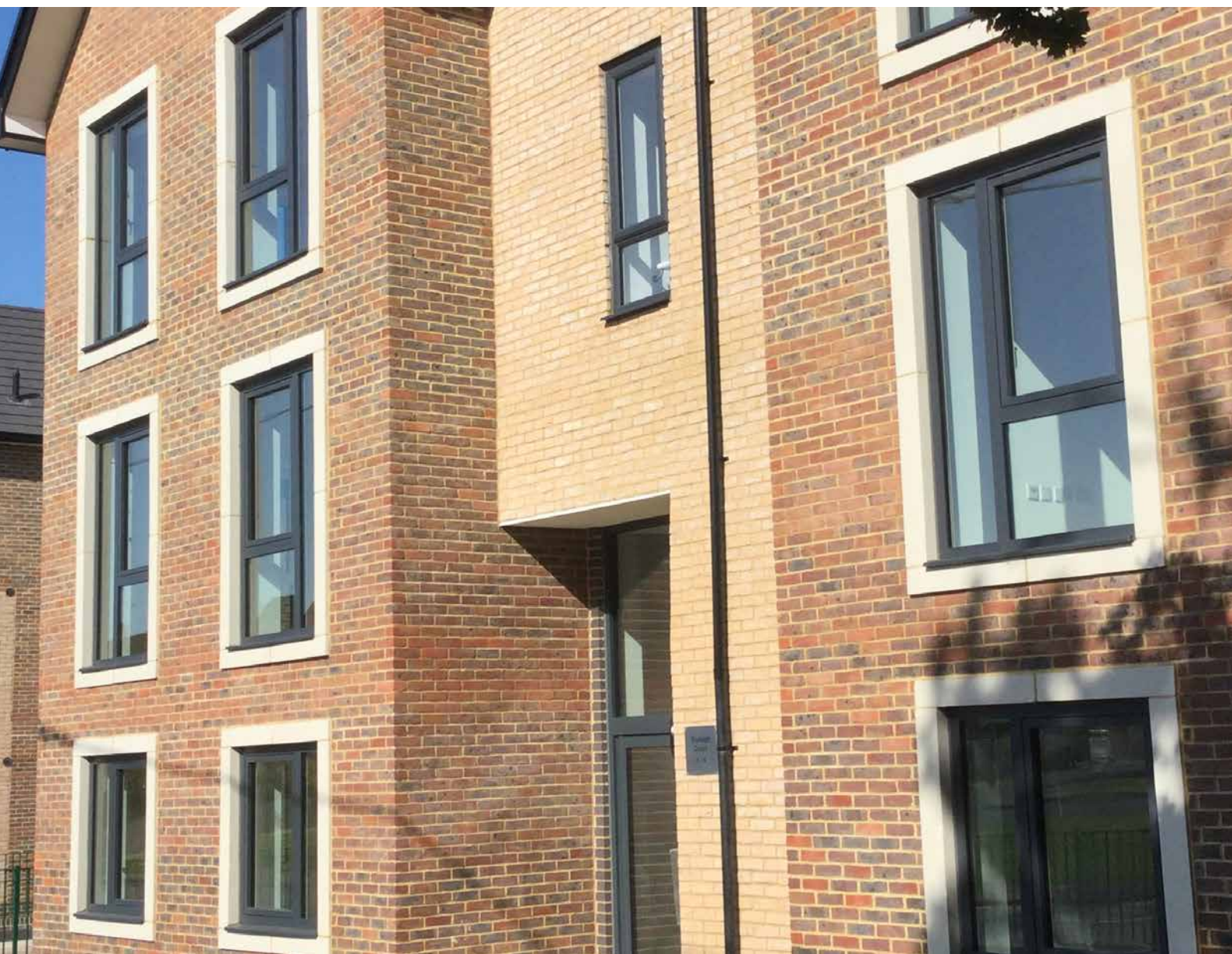
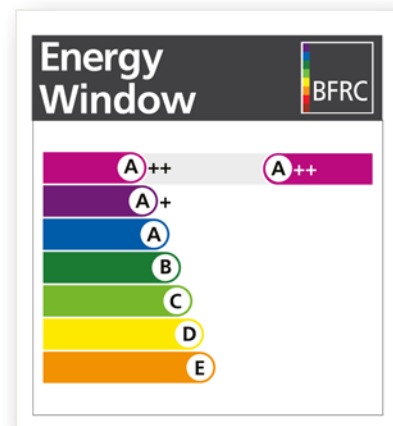
Outstanding design for outstanding thermal performance.

The Flush Tilt & Turn Window System eliminates the need for high-specification insulated glass units (IGUs), insulation within the profiles or special reinforcing.

It has a 6-chamber sash and a 5-chamber outer frame that uses Aeroframe™ thermal barrier technology.

It has been engineered to withstand the elevated conditions and exposure of high-rise developments and there's an optional third weather seal to provide an extra level of protection in even more exposed environments.

As a result of these innovations, it can achieve a WER A++ rating when glazed with argon-filled triple glazing.





# Accreditations & testing

Industry-leading credentials from the Flush Tilt & Turn Window System. As the UK's leading systems house, Epwin Window Systems holds all the accreditations you need to meet your requirements.



## **BS EN ISO 9001**

BSI Registered firm scheme: Quality Management Systems.



## **BS EN ISO 14001**

Manufactured under an ISO 14001 Registered Environmental Management System.



## **BS ISO 45001**

Occupational Health and Safety Management Systems.



KM 12895  
BS EN 12608  
PVC-U Profiles for the Fabrication of Windows and Doors

## **BS EN 12608**

PVC-U Profiles for the Fabrication of Windows and Doors.



KM 33523  
BS EN 12608 / PAS 24  
PVC-U Profile – Enhanced Security Window System Supplier

## **BS EN 12608/PAS 24**

Enhanced Security Window System Supplier.



KM 56791  
BS EN 12608 / PAS 24  
PVC-U Profiles – Enhanced Security Doors System Supplier

## **BS EN 12608/PAS 24**

Enhanced Security Door System Supplier.



KM 594776  
BS 8529 / PAS 24  
Enhanced Security Composite Door System Supplier

## **BS 8529/PAS 24**

Enhanced Security Composite Door System Supplier.



## **Secured by Design**

The UK Police initiative supporting the principles of 'designing out crime' by use of crime prevention and security standards.

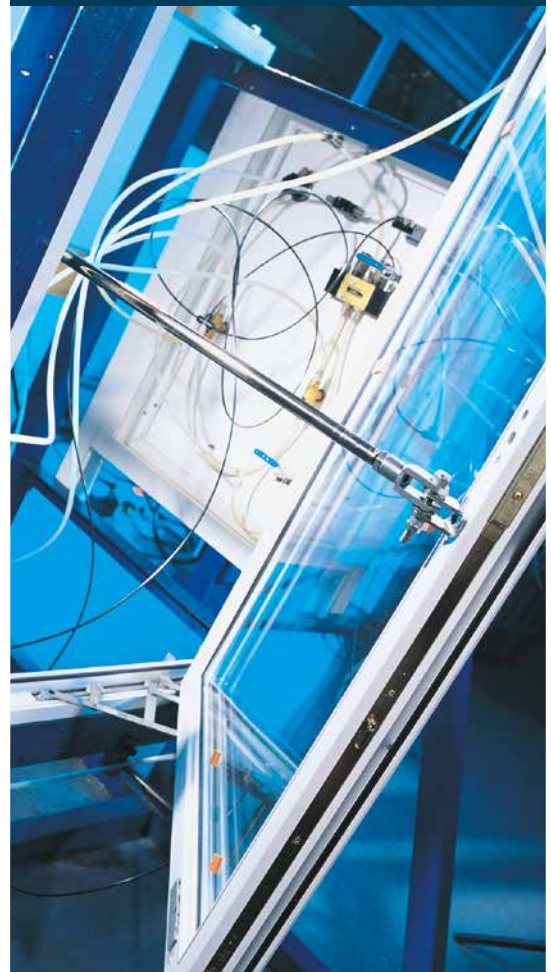


## **VinylPlus**

A labelling scheme to identify the most sustainable and high-performance PVC-U products.

## Tested to the highest standards

Every aspect of the Epwin Window Systems range is continually tested and assessed to ensure it offers excellence in every respect. All Flush Tilt & Turn Window System products meet current Building Regulations as standard and many can provide solutions far above these requirements. No matter how demanding your project, the Flush Tilt & Turn Window System will deliver.





# Flush Tilt & Turn System Product Data



**Flush Tilt & Turn  
Window**

## PERFORMANCE & ACCREDITATION

U-value (double glazing)	1.2 W/m <sup>2</sup> K
U-value (triple glazing)	0.8 W/m <sup>2</sup> K
Energy Rating (WER)	A++
Acoustic Performance-various options depending on specification-RW (C;Ctr)	36 to 44
Air Tightness (Pa)	Class 4 (600pa)
Water Tightness (Pa)	Class E750 (E750Pa)
Wind Loading (Pa)	Class CE2400 (2400Pa)
Security	PAS 24
PAS 24 Size Limits (mm)	1424 x 1538 / 1390 x 2240
Secured by Design (SBD)	✓

## CONFIGURATIONS

Fixed Light	✓
Multilight	✓
Tilt & Turn	✓

## SASH WEIGHT & SIZE LIMITS

Maximum Sash Weight*	130 kg
Maximum Sash Size (mm)	1390 x 2326

## SYSTEM FEATURES

System Depth (mm)	70
Dual Colour Option	✓
Multipoint Locking	✓
Glazing Options	Internally Beaded
Glazing Thickness (mm)	28/36/44

\*Hardware dependent

For more information about Epwin Window Systems products visit  
[www.epwinwindowssystems.co.uk](http://www.epwinwindowssystems.co.uk)



**Epwin**<sup>TM</sup>  
window systems

Epwin Window Systems is a manufacturer of PVC-U and aluminium profile systems, supplied to independent manufacturers and installers who contract to install windows, doors and conservatories. Epwin Window Systems cannot be held accountable for manufacture or installation by independent companies. All information in this publication is provided for guidance only and is given in good faith. As it is company policy to continually improve products, methods and materials, changes of specification may be made from time to time without prior notice. This statement does not affect your statutory rights. © Epwin Window Systems. Part of the Epwin Group Plc. EWS18520