



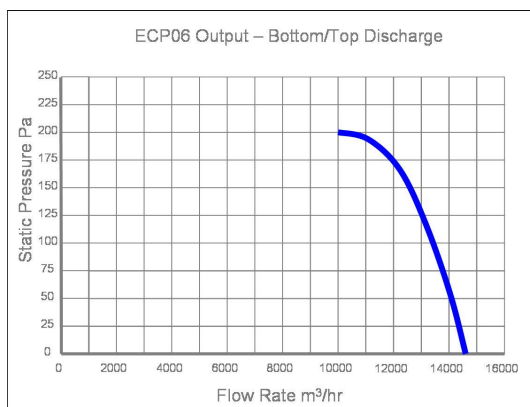
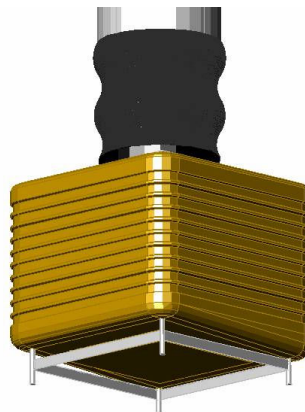
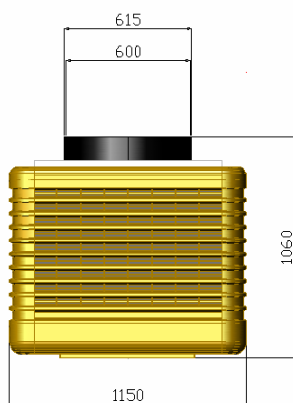
FACTSHEET 0712

Top Discharge Specification

Nominally rated at **14,000m³/hr** this evaporative cooler is manufactured by EcoCooling Limited in an ISO 9002 quality environment. Designed to meet all European electrical, water and other safety legislation.

Based upon an EcoCooler ECP07 a stainless steel fan transition element is fitted to the top. A further polymer blanking plate is used to seal the existing venturi position.

Duct can be fixed to the steel element or to the 600mm internal diameter venturi.



Installation

The cooler should be supported at each corner on 920mm centres with a minimum of 200mm clearance underneath.

The ductwork from the cooler must be completely self supporting. The fan venturi must not be used to carry any load.

It is recommended a flexible connector is used.

The top plate assembly requires sealing after installation to prevent ingress of moisture