



FIS

SCOTTISH
AWARDS 2019
THE WINNERS

www.thefis.org

FIS SCOTTISH AWARDS 2019

Showcasing the quality of work and range of projects carried out in Scotland over the past year, the FIS Scottish Awards were held on 19 September at the InterContinental Edinburgh The George, with comedian Eric Davidson doing the honours.

CATEGORY INFORMATION

FIS Scottish Awards pay tribute to design and craftsmanship. This year's awards included the following categories:

- Interior Fit-out
- Partial Fit-out
- Suspended Ceilings
- Drywall Construction
- Plasterwork
- Partitioning
- Judges' Award
- Apprentice of the Year

CALL FOR ENTRIES

Entries are being sought for the 2020 FIS Scottish Awards. The award categories cover a wide range of disciplines and attract entries from some of the leading companies in the finishes and interiors sector. All FIS members should consider entering as it is the quality of work which is judged, not the value or profile of the contract.

WHY ENTER?

Winning an FIS award is an excellent way to raise your company's profile and gives you a competitive edge. An award provides visible and valuable recognition for your entire organisation.

If your company delivers first class interior solutions, then this is a perfect opportunity to be recognised for the quality of your work.

Winners and entrants receive substantial publicity across FIS publications and on the FIS website.

ENTRY FORMS

Deadline for entries is 28 February 2020 and the entry fee is £250 per entry.

Entry opens on 1 November 2019. Only FIS members are eligible to enter.

For more details call 0121 707 0077 or visit www.thefis.org



FIS
Olton Bridge
245 Warwick Road
Solihull
West Midlands
B92 7AH

+44(0)121 707 0077
info@thefis.org
www.thefis.org

JUDGES' COMMENTS

We travelled in excess of 700 miles viewing this year's entries, the number of which has increased by over 50% compared to last year, which is a testament to the amount of quality work being produced in Scotland.

As judges, we would like to acknowledge the pleasure and enthusiasm you have demonstrated in showcasing your work to us. We appreciate and understand the hard work and dedication that has been poured into each project, especially with the ever-increasing pressure put on programmes and budgets, but still managing to maintain a high standard of quality.

This year produced such a wide variety of projects ranging from the vast Aberdeen Events Centre, to a replica First World War trench and the reinstatement of Queen Victoria's Waiting Room at Ballater Train Station which was badly damaged by fire in May 2015. All of which, including the entrants not mentioned, was a pleasure to judge.

We would like to thank all FIS members who entered their project, whether they won or not, for their time and courtesy shown to us, also, we would like to encourage all members to continue to contribute to the awards process to promote our wonderful industry.

PHIL TAYLOR AND DAVID MATTHEWS



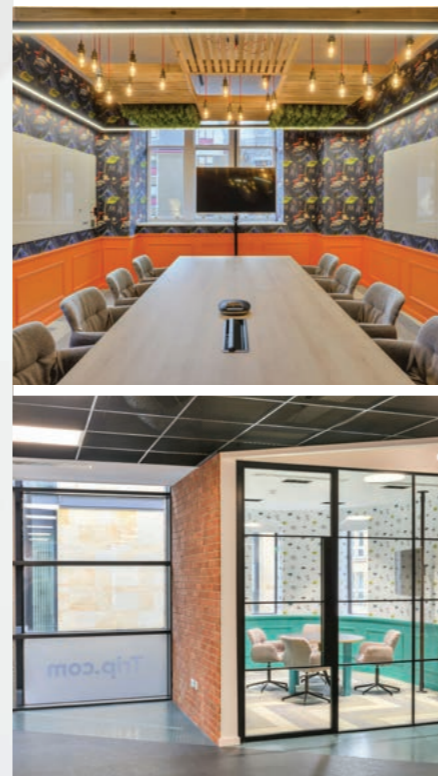


**WE BELIEVE
 THE INDUSTRY
 DESERVES
 BETTER**

We're committed to raising
 the bar and improving our
 businesses *together*.

To find out more about what we're doing
 to be completely customer focused, visit:
ccfltd.co.uk/completely-customer-focused

CELEBRATING OVER
4 YEARS
**COMPLETELY
 CUSTOMER
 FOCUSED**



CONTRACT
Trip.com, Edinburgh

ARCHITECT
HK Surveying & Design

Scotwood was brought in to create a contemporary workplace for online travel agency Trip.Com in the heart of Edinburgh. It created large open-plan areas, breakout spaces and themed meeting rooms, using a mixture of glazed solid walls and bespoke panelling.

The works also included flooring throughout, using tiled, vinyl and carpet tiles, and decoration involved a combination of paint and feature wallpaper.

In addition, Scotwood adapted the existing mechanical installation and installed new air conditioning in the communications room, along with full electrical fittings.

The judges said...
 "Scotwood created an excellent, innovative and vibrant environment, featuring myriad finishes, including striking colourful wallpapers, brick slips, metal mesh ceilings and glass partitions – all of which perfectly blend together to form a lively interior."

CATEGORY
 SPONSOR



INTERIOR FIT-OUT
Axis Interiors Solutions

**SILVER
WINNER**



CONTRACT
Avison Young, Sutherland House, Glasgow

ARCHITECT
Avison Young

Axis Interiors Solutions was awarded the Cat B office fit-out for the new Glasgow office of property company Avison Young. The contract comprised the formation of a new reception area involving bespoke joinery works, group working areas and breakout spaces, which would reflect a collaborative environment for Avison Young's clients.

A high standard of specification included: feature floor coverings in specific areas in a herringbone pattern; boardroom, meeting rooms and focus rooms using the Komfort Polar double-glazed system with double-glazed Sonik doors and banded glazing; and feature lighting, acoustic panels and acoustic hanging screens.

The judges said...

"The aim was to create a forward-thinking environment that Avison Young could show its clients; with the partitions, floors, storage walls, furniture, carpets and decoration, Axis Solutions certainly achieved what the client wanted."

CATEGORY SPONSOR



www.axis-solutions.co.uk

PARTIAL FIT-OUT
North Group

**GOLD
WINNER**



CONTRACT
Ballater Royal Waiting Room, Aberdeenshire

ARCHITECT
Halliday Fraser Munro

North Group was appointed by Aberdeenshire Council to carry out restoration and manufacturing works at Ballater Station, which was originally built in 1866 so that Queen Victoria and the royal family could travel by train to Balmoral but was mostly destroyed by fire in 2015.

The judges said...

"The end result is an impressive restoration project showing off excellent finishing skills."

As part of the initial site visit, North Group photographed what remained of the structural fabric of the building, before recording and numbering everything that was being taken out of the remains of the Royal Waiting Room.

As items were removed, they were carefully wrapped and stored, either for referencing for remanufacture or to be salvaged and repaired. The firm then set about manufacturing wall panelling damaged in the fire to match what would have originally been on the walls, as well as the fireplace and doors. The project also involved reinstating a damaged Victorian toilet.

A number of panels that had been removed from site when the station was being used as offices were donated to help with the restoration.

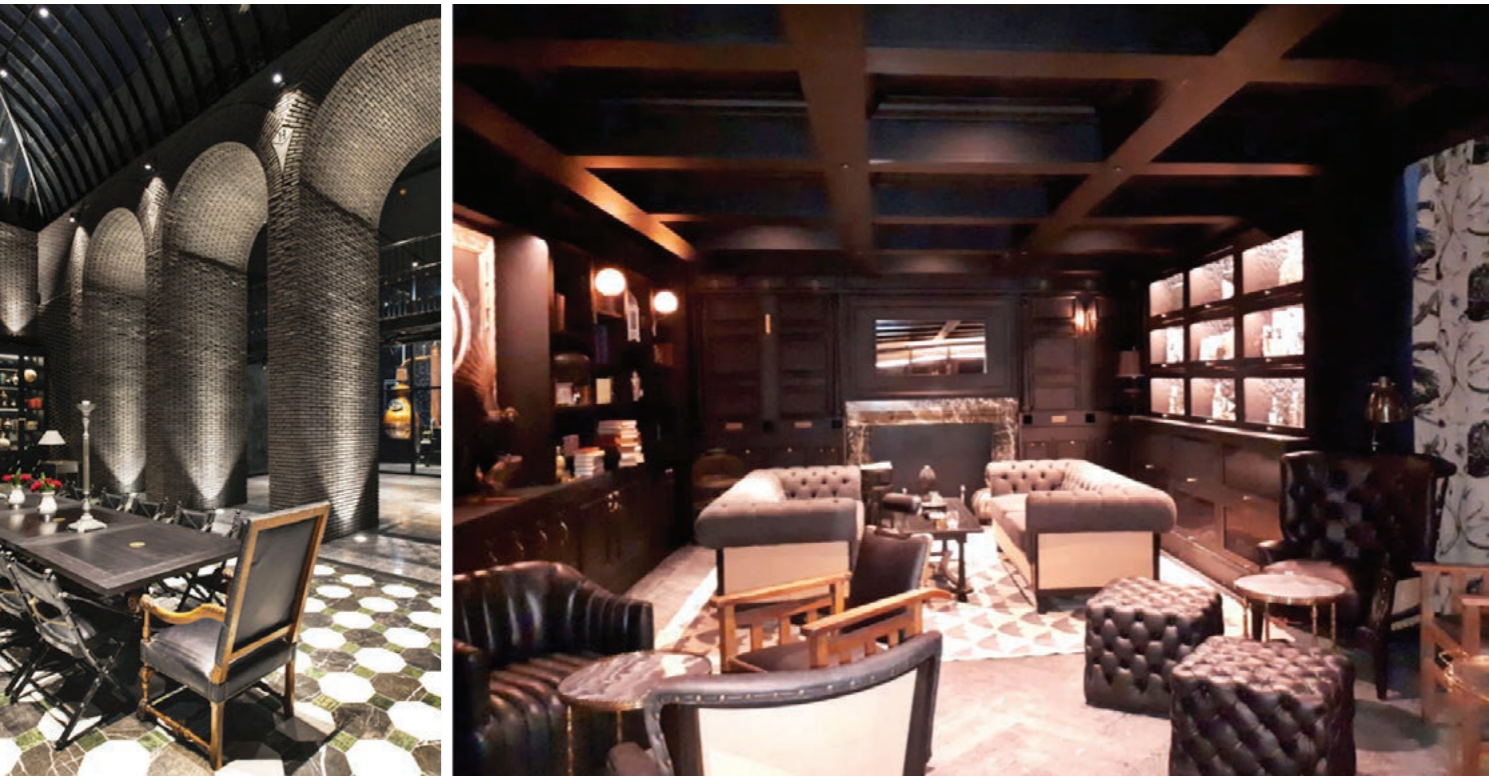
CATEGORY SPONSOR



www.northgroup.co.uk

PARTIAL FIT-OUT
Veitchi Interiors

**SILVER
WINNER**



CONTRACT
**Hendricks Gin Palace,
Ayrshire**

ARCHITECT
Michael Laird Architects

Veitchi Interiors carried out a range of works to create a distillery/visitors centre at Hendricks Gin Palace on the outskirts of Girvan. The project included suspended ceiling installation, soft floor coverings, drylining, drywall partitions, integrated plumbing system/cubicles, bespoke furniture, glazed screens and joinery.

There were challenges in terms of site location, design and working with other contractors, which called for continual collaboration. A mix of finishes was used, modern and retro. The toilet areas were fitted out with bespoke IPS panelling, cubicles, mirrors and benching, and ceiling details involved MF/SAS metal ceiling tiles.

Drywall partitions incorporated style trims to create shadow gaps at abutments, doorframes, skirting, wall and ceiling junctions. Veitchi also manufactured and installed bespoke furniture in the bar/lounge, master distiller's lab, still houses and control room. It also manufactured external arch doorsets, incorporating a viewing door.

The judges said...

"A great looking building fitted out with an industrial modern feel. A lot of details have been incorporated, including shadow gaps to the majority of the drylining, and in the entrance areas, Armourcoat polished plaster gives a really nice sharp finish. It's a pity this building isn't open to the general public."

CATEGORY
SPONSOR
**SPEC
FINISH**

www.veitchi.com

SUSPENDED CEILINGS
Brian Hendry Interiors

**GOLD
WINNER**



CONTRACT
**Balloch Primary School
Campus, Alexandria**

ARCHITECT
Holmes Miller Architects

Brian Hendry Interiors worked with Morgan Sindall as the specialist ceilings subcontractor responsible for installing a range of acoustic ceiling solutions at the new Balloch shared campus.

The £16m school, designed by Holmes Miller Architects, opened in 2018 on the site of St Kessog's Primary School, bringing together pupils from three schools under one roof in a modern learning environment.

Brian Hendry Interiors supplied and installed the suspended ceilings works package, which comprised around 3,500m² of ceilings and included plasterboard bulkhead features. Completed within 23 weeks, the suspended ceilings package incorporated three acoustic Armstrong Ceiling solutions - 600x600 Perla OP 0.95 regular tiles within a 24mm exposed grid; 600x600 Parafon Hygien board within a 24mm NRC grid; and the Techzone integrated ceiling system incorporating Perla Op 0.95 1,200x300mm Microlook planks.

The judges said...

"The Techzone ceiling requires a higher level of installer involvement to ensure the ceiling design and detailing achieve the architect's vision. Overall, this project is completed to an extremely high standard in terms of both finish and client satisfaction."

CATEGORY
SPONSOR
NEVILLONG
INTERIOR SYSTEMS SPECIALISTS

www.bhinteriors.com

SUSPENDED CEILINGS
Linear Projects



We think of solutions,
so you don't have to.

Nevill Long's dedicated team of interiors specialists will give you the inside knowledge.

Expert insight. Specialist knowledge. Technical experience. They make all the difference at every stage of any project as you'll discover working in partnership with the team at Nevill Long. As well as the right ceiling, drywall and partitioning solutions to meet your required performance, you can access a wealth of problem-solving know-how. So make sure to contact the team for your next interiors project.

CONTRACT
**The Event Complex
Aberdeen (TECA)**

ARCHITECT
Keppie

Specialist interiors subcontractor Linear Projects oversaw the design and installation of ceilings and walls at this £333m state-of-the-art events venue in Aberdeen. Working in collaboration with Rockfon, it ensured the systems met rigorous acoustic and structural demands.

The initial brief was for an elegant high-performance ceiling grid that could span 2,500m² and support the ceiling infill, and to find an acoustic ceiling and wall solution to suit the exhibition spaces and main arena, where the ceiling reaches 27m.

Rockfon created 100mm thick Color-all black ceiling tiles with 100mm Rockwool FLEXI overlay for the ceilings, and 40mm thick Color-all panels with 100mm or 160mm FLEXI for the walls. This allowed Linear Projects to deliver an acoustic solution that would control the sound reverberation of the large performance space.

The judges said...
"A very impressive project carried out to an extremely high standard. Stringent acoustic requirements were addressed by collaboration between Linear Projects and Rockfon. Although it looks like a simple lay-in grid ceiling, a lot of behind-the-scenes design work has taken place."



QIC TRIMS are the UK's leading supplier of aluminium trims and associated products for the interior fit out sector, offering products for use within Dry Lining reveal trims, Suspended Ceiling perimeter solutions and Blind Box products. We can supply specialist curved aluminium trims to a particular radius or design. We also manufacture specialist access panels, as well as purpose made bespoke trims and pressed metal solutions.

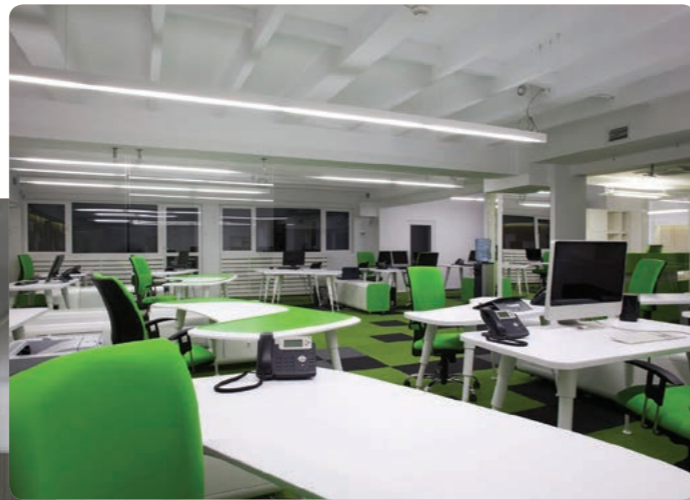
In 2002, we opened our purpose-built 36,000 square foot factory which houses some of the most modern machinery available, together with a state-of-the-art polyester powder coating facility. Our technical expertise, gained from years of practical industry experience, is second to none, and we back this up with full computer aided design technology. As the direct result of our investment in these facilities, we believe that our technology, product quality, and response times are of the highest level. **We pride ourselves upon our ability to provide fast track solutions.**

Q DRY LINING REVEAL TRIMS

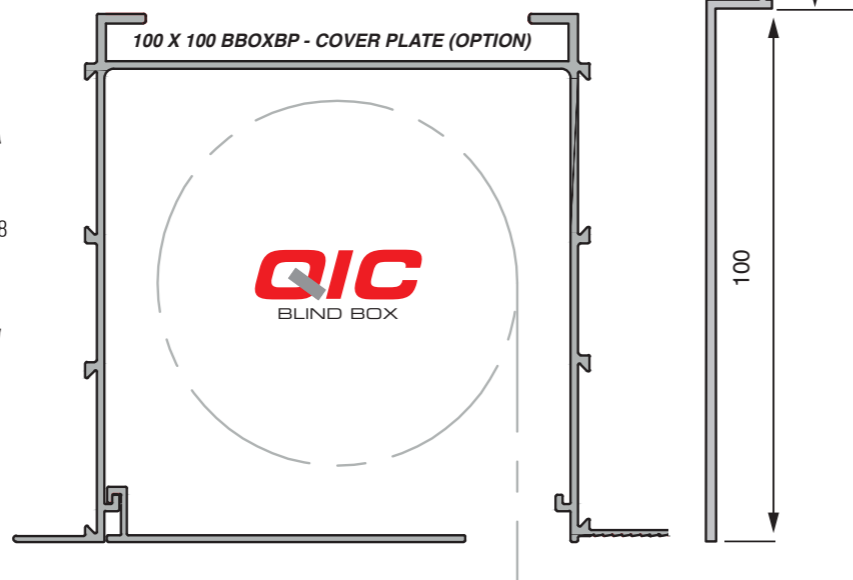
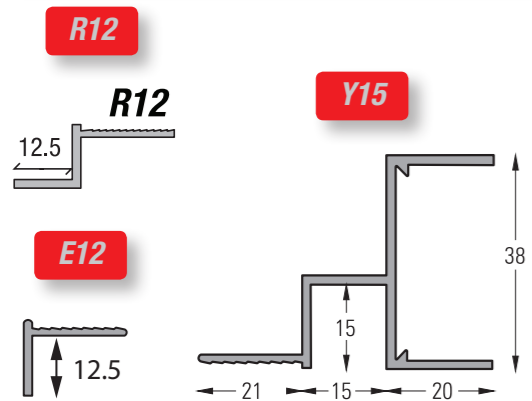
Q PERIMETER SOLUTIONS

Q BLIND BOX SOLUTIONS

Q SKIRTING SOLUTIONS



ST100



Please Contact:
our Sales Director Neil Miller;
neil@qic-trims.com
07469 084960

QIC TRIMS Ltd - Radclive Road, Gawcott, Bucks, MK18 4BL (UK)
T: +44(0)1280 818950 F: +44(0)1280 818955 E: sales@qic-trims.com



www.qic-trims.com

DRYWALL CONSTRUCTION Brian Hendry Interiors

**GOLD
WINNER**



CONTRACT
The Edinburgh Grand

ARCHITECT
Morgan McDonnell
Architecture

Brian Hendry Interiors delivered the drylining package at The Edinburgh Grand, which comprises 50 luxury apartments, restaurant and bar in a Grade A listed building. The former Royal Bank of Scotland headquarters, built in the 1930s, was originally five storeys but now has a rooftop apartment.

The 49-week project included metal stud partitioning, shaftwall partitioning and wall linings with high acoustic/fire requirements across the apartments, meeting rooms, bar, restaurant and back of house over 10 floors.

The partitions installed varied according to the area. The apartments were separated by twin wall 50mm metal stud partitions, double-sheeted with 15mm Knauf Soundshield Plus plasterboard to achieve 64dB. The rooms in each apartment were constructed using 70mm metal stud partitions with 15mm Knauf Soundshield Plus plasterboard, achieving 42dB.

In addition, 120-minute fire partitions were installed in various locations, using 70mm metal stud with 15mm Knauf Fire Panel plasterboard, with shaftwall partitions constructed to service risers. Double-layer fire plasterboard ceilings were installed beneath the sixth-floor penthouse.

On the top floor, the partitions installed followed the curve of a feature atrium to facilitate the formation of additional accommodation.

The judges said...

"From one-bedroom apartments to a rooftop penthouse, all were afforded the same level of finish, with the champagne and cocktail bar fitted out in an art deco fashion to perfectly complement this listed building. Overall, a fantastic looking building with an opulent feel throughout."

**CATEGORY
SPONSOR**



www.bhinteriors.com

DRYWALL CONSTRUCTION
Veitchi Interiors

**SILVER
WINNER**



CONTRACT
University of the West of Scotland, Hamilton

ARCHITECT
Mosaic Architecture

For this project, to create new teaching facilities at the University of the West of Scotland, Veitchi undertook the drylining and partitioning as part of an overall multi-trade fit-out package.

The building is a conversion of three pavilions into three teaching wings over three floors, with a newly created Street link area.

One of the biggest challenges was the restricted loading area caused by works to create the Street on the main frontage. As a result, all materials had to be hoisted in small pallet loads on to a landing platform on each floor plate via the rear of the facility and then manually distributed across and through each level and wing.

The new main Auditorium has a capacity for 236 people. The new walls creating this space required a bespoke design solution due to the heights of the partitions being built and the lack of structural support members. Veitchi worked closely with the design team and British Gypsum to overcome these challenges and a cost-effective solution was delivered. These partitions and wall-linings were in excess of 12 metres high.

The judges said...

"Extremely impressive modern university building. All lines were sharp and detailing good and maintained throughout the project. The area is a pleasure to enter with its reception and well appointed cafe."

PLASTERWORK
David Fisher & Sons

**GOLD
WINNER**



CONTRACT
City Observatory redevelopment, Edinburgh

ARCHITECT
Collective Architecture

Refurbishment work on the neoclassical City Observatory in Edinburgh first began back in 2012. The building, originally designed by William Henry Playfair in 1818, had fallen into dereliction over the past century, until visual arts group Collective decided to transform it into its new gallery.

David Fisher's works on the project were completed in September 2018 over a four-week period. Initially, the scope of works covered traditional lath and lime plaster to the ceilings and meridian slots of the observatory, and in-situ work to the cornices. The firm's challenge was also to retain as much of the existing fabric as possible.

The scope was later extended to include a proprietary lime-based plaster on stainless steel rib lath to the walls of the City Dome.

The judges said...

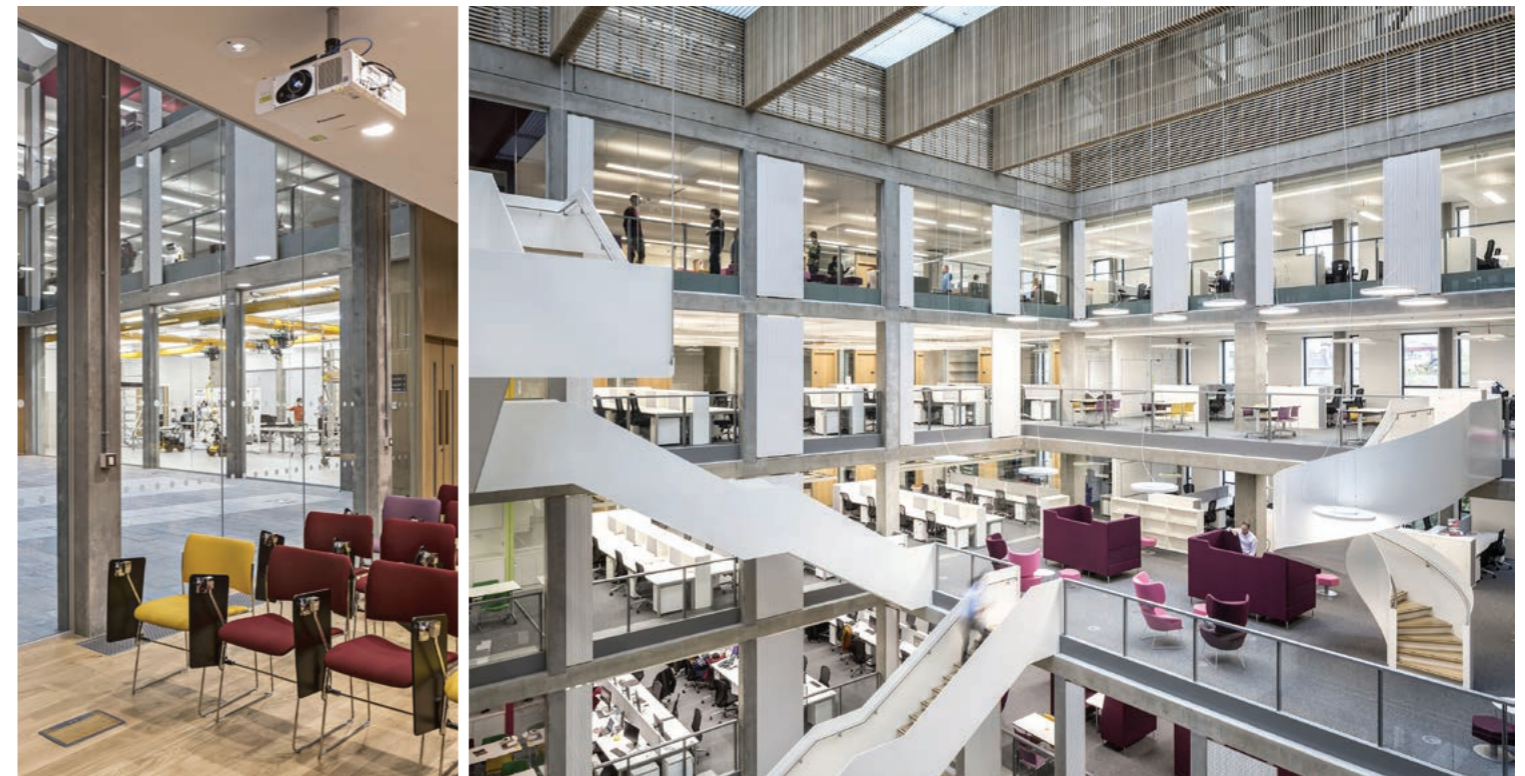
"A great effort from a team comprising four men and an apprentice. The refurbishment of the city observatory was completed using traditional construction methods of lath and lime plaster to the ceilings and meridian slots, and in-situ refurbishment works to the cornices, whilst endeavouring to retain as much of the existing fabric as possible. Also, the observatory walls were refurbished using a lime based plaster on stainless steel rib lath."

KNAUF

**Proud to sponsor the
plasterwork category in the
FIS Scottish Awards 2019**

Build for the world we live in

www.knauf.co.uk



CONTRACT
**The Bayes Centre,
Edinburgh**

ARCHITECT
Bennetts Associates

Indeglas was tasked with creating a detailed design specification to provide glazed partitions installed over five floors in Edinburgh University's Bayes Centre, its innovation hub for data science and artificial intelligence.

The centre, the final phase of the university's Potterrow development, opened in October 2018, transforming Edinburgh into one of the UK's most dynamic tech centres.

From an outline specification for the internal glazed screen work package, Indeglas worked with architect Bennetts Associates to create detailed design specifications, drawings and engineering calculations for each screen type required.

Sixty-minute fire-rated 53dB acoustic barrier screens, including deflection heads, were installed to the fifth floor using robotic lifting equipment to manoeuvre the glass panes into the building and into their installed framework.

The judges said...

"An impressive looking project with fine detailing, specifically the in-house-designed glazed screen to drylining junction. The overall project has a very high-tech, modern feeling, and Indeglas' glazed partitions blended in perfectly."

CATEGORY
SPONSOR



PARTITIONING
Planet Contracting



Proud to sponsor the
partitioning category in the
FIS Scottish Awards 2019

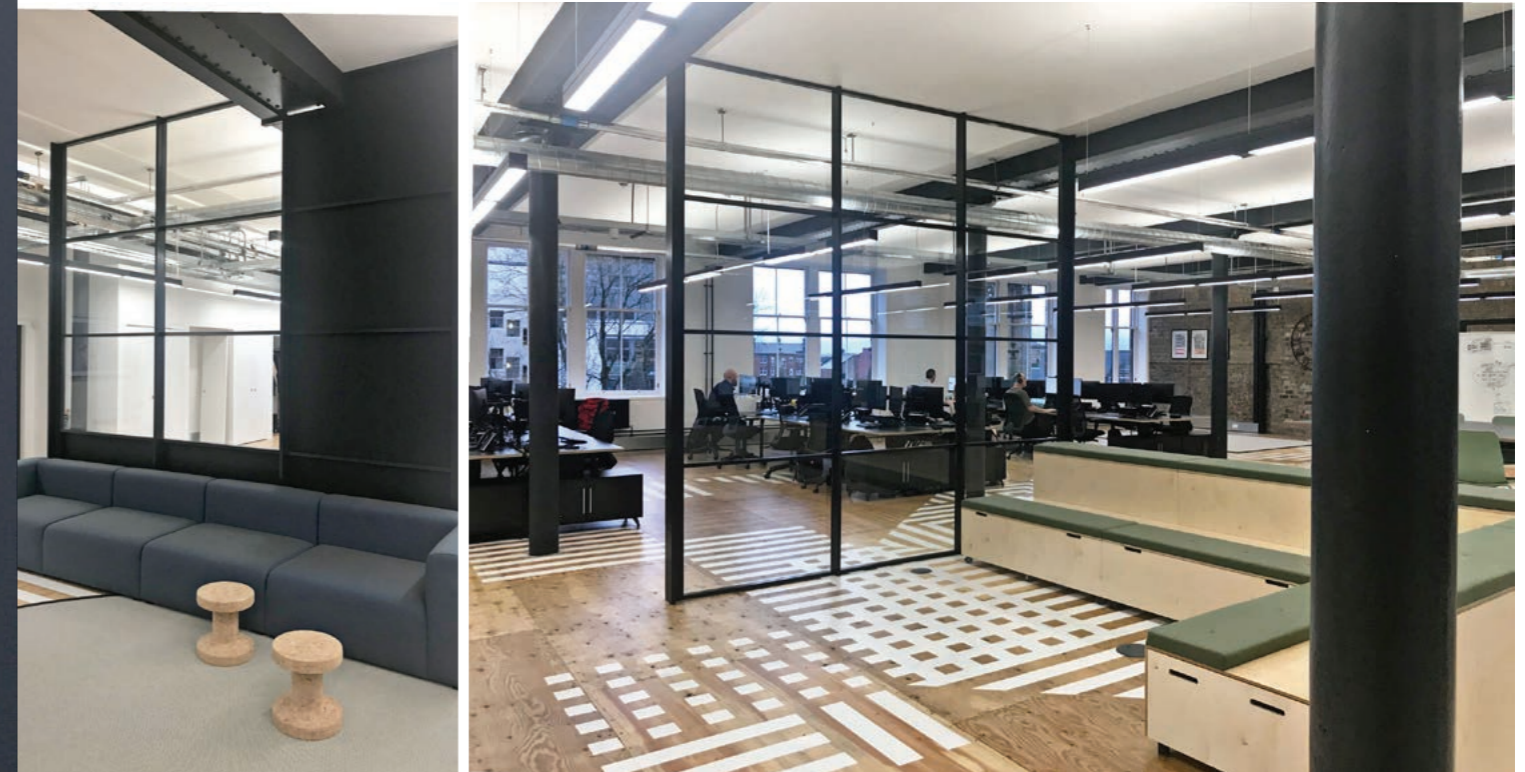
Komfort divide spaces by designing and manufacturing internal glazed and solid partitions with integrated door sets.

We are quality UK manufacturers, proud of our long standing relationships built on service, flexibility and technical support. Our knowledgeable and experienced specialists deliver the architect's vision through our extensive contractor network.

Think partitioning, think Komfort.

www.komfort.com

Think partitioning,
Think Komfort



CONTRACT
AutoRek, Glasgow

ARCHITECT
Graven

Planet Contracting was commissioned to install its industrial style Loft 54 system into the new head office of financial controls and data management solutions provider AutoRek in Glasgow.

The Garment Factory, comprising 780m² of space, is a category B listed building located in the Merchant City conservation area of Glasgow. A £6m refurbishment project by developer Castleforge has involved restoring original features and introducing contemporary finishes.

Planet installed partitions up to 3,600mm high, consisting of a mixture of glass, laminate boards and mesh panels. Because there were no suspended ceilings, the heads of the partitions had to be fixed to the structural soffit and cut around the existing beams.

The judges said...

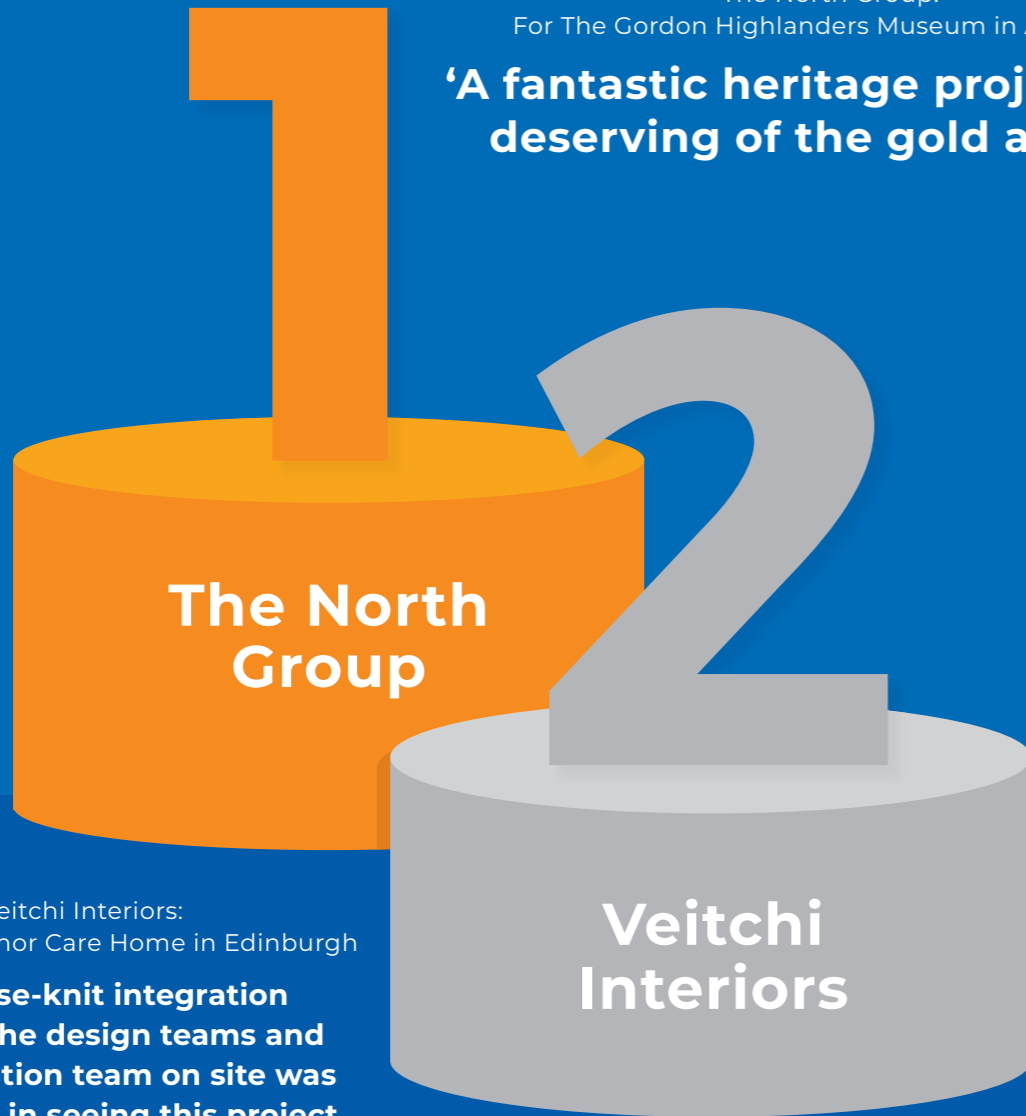
"An impressive looking project, maintaining the industrial look of the old garment factory". "This level of detail proved challenging, but provided an excellent looking end product," they noted. "The overall project has a modern but industrial feel that provides an excellent working space."



CONGRATULATIONS TO THE NORTH GROUP AND VEITCHI INTERIORS ON WINNING THE JUDGES AWARD

The North Group:
For The Gordon Highlanders Museum in Aberdeen

**'A fantastic heritage project fully
deserving of the gold award.'**



Veitchi Interiors:
For Queens Manor Care Home in Edinburgh

**'The close-knit integration
between the design teams and
the installation team on site was
paramount in seeing this project
through to a successful conclusion.'**

Proudly sponsored by Minster

We're one of the UK's top distributors of specialist insulation, dry lining, partitions, roofing and ceiling solutions. We understand every customer's project to deliver a solution that's perfect for you.

Find your nearest branch from our UK-wide network at minsteronline.co.uk



JUDGES' AWARD
North Group

**GOLD
WINNER**



CONTRACT
**Gordon Highlanders
Museum, Aberdeen**

ARCHITECT
Covell Matthews

North Group was appointed as the main contractor on this cultural heritage project within Aberdeen. Collaborating with the Gordon Highlanders Museum, the works involved the formation of a replica trench system from the First World War as part of the visitor experience.

The judges said...
"A fantastic heritage project fully deserving of the gold award."

North Group built timber frame sections in its joinery workshop, which were then transported to site and partially panelled with sawn-off cuts of logs to form sections of the walls within the trench. This was complemented by corrugated metal sheeting along the bottom of the walls to replicate the look and feel of a First World War trench.

In addition, the firm supplied more than 500 sandbags, which were placed around the top. Within the trench walls, it built sleeping platforms, a firing platform, toilets and an observation post. Two shipping containers were also fitted out with timber panelling to create officers quarters and a regimental aid post.

North Group oversaw the installation of all electrics in the trench, which included brass light fittings.

CATEGORY
SPONSOR



www.northgroup.co.uk



CONTRACT
Queens Manor Care Home, Edinburgh

ARCHITECT
Yeoman McAllister

Veitchi was employed to design and build a two-storey 60-bedroom care home using a Metframe system. All the Metsec products were delivered direct to Veitchi's factory, where they were assembled into panels to be delivered straight to site for direct installation.

The challenge was to erect the two-storey light-gauge steel frame on a tight site on one of Edinburgh's main arterial roads. Restrictions on delivery times and limited space on site called for carefully sequenced deliveries, and to complicate matters, two cranes were required for frame erection.

The structure is hemmed in on three sides by housing and on the fourth by the main road, so to make full use of the site, Veitchi used a bespoke edge protection system developed for use with the Metframe system. This eliminated the need for external scaffold and allowed the structure to be taken closer to the site boundary.

The judges said...

"The close-knit integration between the Metsec design team, the Veitchi design team and the installation team on site was paramount in seeing this project through to a successful conclusion. The completed building looks fantastic, both inside and out."



EMPLOYER
Carter Ceilings

Carter Ceilings first met Connor when he had been directly employed by a client as a labourer on one of its sites. The 22-year-old asked the site supervisor if Carter would be hiring apprentices. Despite the prospect of considerably lower pay as an apprentice, Connor was willing to make the short-term sacrifice to build a better future for himself.

"This attitude is testament to his commitment to personal development and progression," said Alison Warrender, Business Manager at Carter Ceilings. "Connor always makes sure he is carrying out tasks correctly and does not shy away from asking tradesmen and college lecturers if he is doing it correctly."

Connor proved his commitment when asked to travel long distances to work. For a job in Skye, for example, Connor was the first to volunteer to assist a tradesman, though it meant leaving home at 4am and travelling more than five hours each way to do the job.

Connor has been described by the Carter team as "the most committed, reliable, conscientious and trustworthy apprentice we have had". They added: "He has an infectious personality, which rubs off on people around him, leading to a harmonious and productive team."

In its award nomination for Connor, Carter applauded his involvement in site operations. When he started working at the firm, he was on site with a team that wasn't entirely comfortable with IT, but Connor was always on hand to help his supervisor complete registers and photograph them to send back to the office for Carter's records.

"This may not have been in his job description," said Carter in its nomination, "but he went out of his way to help a more senior member of our team. That's what we call contribution."

They agreed that Connor often needs reassurance, but that this was his strong point. "If Connor didn't worry, and didn't seek reassurance, he wouldn't care. Connor definitely cares about both his own abilities and the company as a whole."

The judges said...

"He has taken a step backwards in terms of pay to achieve a better long-term goal of learning a trade – a brave decision. He is highly thought of by the colleagues because he cares and is conscientious. Sounds like a recipe for success! As to his support for the business, he has used his existing skills to train his supervisor, demonstrating a two-way commitment to learning and adding value to his employer where he can. He has stepped forward to volunteer for less attractive jobs, making sure he grabs every opportunity to gain experience while also adding value."

CATEGORY SPONSOR



www.veitchi.com

CATEGORY SPONSOR



www.carter.co.uk

REWARDING INDUSTRY'S BEST



FIS SCOTTISH AWARDS 2019



The FIS Scottish Awards celebrate high levels of craftsmanship and best practice in the finishes and interiors sector. The awards are a platform for contractor members to demonstrate the quality and excellence of their work to clients and the wider sector.

#FISawards

ENTRY OPENS 1 NOV 2019
Apply online at thefis.org

“We travelled in excess of 700 miles viewing this year’s entries, the number of which has increased by over 50% compared to last year, which is a testament to the amount of quality work being produced in Scotland.”

FIS SCOTTISH AWARDS SPONSORED BY



FIS

FINISHES & INTERIORS SECTOR

Building a better fit-out and finishes sector... together.

Our mission is to set members up for success by bringing people together through shared activities, knowledge, events, products and services. We create conditions for all our members to improve performance and win work.

7 REASONS TO JOIN!



WINNING WORK

FIS promotes its members through an extensive outreach programme.



EXPERT ADVICE

FIS extends your team and helps you with day to day problems.

"During a live project, we called on FIS for technical expertise regarding an issue with CE marking. Their response was swift, informed and, above all, resolved the issue. We recommend FIS membership to anyone in the interiors sector."

Tony Johnston, Sound Interiors Ltd



MARK OF QUALITY

FIS allows you to demonstrate your quality credentials to your clients.



FIGHTING YOUR CORNER

FIS is the voice of the finishes and interiors sector representing you.



CHAMPIONING FIT-OUT

FIS brings the finishes and interiors community together.

"For any company that actively works within the fit-out sector, I strongly recommend membership of FIS. We have gained from the FIS groups we have associated with, and became nationally recognised as a Gold Winner in the annual Contractors Awards competition."

Julian Sargent, Style Partitions

**PRODUCT
PROCESS
PEOPLE**

MANAGING YOUR RISKS

FIS will help you to identify your risks and how to overcome them.



DELIVERING SKILLS

FIS is providing the training and skills the sector needs.

"Being part of FIS gives us the back-up we need, and gives our clients confidence in the products we offer."

Tony Regan, Building Additions

**FIND OUT
MORE**

thefis.org
membership@thefis.org
0121 707 0077

