

Commercial Flush Casement



THE BEST WINDOWS ARE MADE FROM PROFILE 22

Commercial Flush Casement

Especially designed to overcome the design issues associated with traditional casement windows, the Profile 22 commercial flush casement window offers exceptional energy efficiency courtesy of the innovative “Aeroframe” thermal wall technology and has a striking, deep bevelled, appearance.

Commitment to
excellence in window
technology

After extensive market research, our new flush casement window has been designed using low carbon technology. Designed with five chambers in all profiles and fully compatible, it can also incorporate triple seals to maximise thermal performance.

The Profile 22 commercial flush casement is the perfect combination of optimised thermal performance and outstanding aesthetics.

Commercial Flush Casement applications

The special design of the commercial flush casement is also ideal for modern apartment buildings and overcomes the issues with the traditional casement style window, when a more ‘flush’ appearance is needed.

The commercial flush casement also provides the perfect solution when a “period” appearance is required to recreate the look of a traditional timber window. The exceptional energy efficiency performance of this window works at the same time to lower heating bills. The innovative design incorporates “Aeroframe” and five chambers in all profiles and on top of this can be fitted with triple seals to maximise thermal performance.



Low carbon technology

Our entire manufacturing process, from design and production to installation is confined to the UK and Ireland, minimising transportation and fuel consumption. The new commercial flush casement window is a sustainable product that does not consume additional harmful materials or generate associated waste.



Thermal performance



Product features at a glance

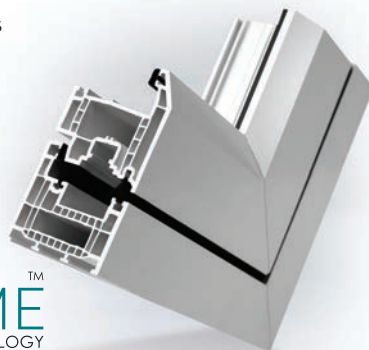
- Triple seal for improved weather resistance and achieves WER A+ rating
- Triple glazing allows U-values to 0.8 W/(M2.K)
- Maximum opening size of 900mm wide to 1600mm high to allow flexible design
- Overcomes design issues with traditional casement windows
- Includes 5-chambered and "aeroframe" technology
- Available in a range of dual colours.
- Deep-bevel for a striking appearance
- Recycled composite outer frame reinforcement
- Glazing options: 24, 28, 40 & 44mm
- Standard co-extruded gasket – optional 2nd & 3rd weather seal to aid thermal performance
- Variety of colours available
- Full suite of hardware & accessories
- Designed & manufactured in Great Britain



Thermal performance

Also through our commitment to continuous improvement we have developed the highly innovative 'Aeroframe', which has been integrated into this new window system allowing for greater thermal performance through its complex 'thermal barrier' technology.

This Flush Casement Window is a 5 chamber system and achieves a WER 'A+' rating when glazed with argon filled triple glazing. The system eliminates the need for expensive Krypton gas filled units, insulation in the profiles or expensive special reinforcing; therefore reducing cost.



Fully accredited system

The window is Secured by Design accredited giving peace of mind to the end-user that the product meets police approval for security and ensures the windows are tested and approved to BS7950 security standard.

Certified manufactured to BES6001 proving our products have been made with constituent materials that have been responsibly sourced and allows additional points under the Code for Sustainable Homes or BREEAM.

For more information
please contact us:

Profile 22 Systems

Stafford Park 6, Telford
Shropshire, TF3 3AT

T: 01952 290910

F: 01952 290460

W: www.profile22.co.uk

E: specifier@profile22.co.uk



BS EN ISO 9001
FM09180



BS EN ISO 14001
EMS86980



BS OHSAS 18001
OHS523157



BES 6001
Responsible Sourcing
www.greenbooklive.com
Licence No. BES 583816



Secured by Design
Official Police Security Initiative



BS EN 12608
KM12895
PROFILE



BS EN 12608/PAS24
KM33523
ENHANCED SECURITY
WINDOW SYSTEMS
SUPPLIER



BS EN 12608/PAS24
KM56791
ENHANCED SECURITY
DOOR SYSTEMS
SUPPLIER



BS 8529/PAS24
KM594776
ENHANCED SECURITY
DOOR SYSTEMS
SUPPLIER



BBA
APPROVED
SUPPLIER
TESTING
CERTIFICATION
PROFILE 22

PROFILE 22 is an international PVC-U profile system supplied to local independent manufacturers and installers who contract to install windows, doors and conservatories.

PROFILE 22 SYSTEMS cannot be held accountable for manufacture or installation by independent companies. All information in this publication is provided for guidance only and is given in good faith. As it is company policy to continually improve products, methods and materials, changes of specification may be made from time to time without prior notice. This statement does not affect your statutory rights. © PROFILE 22. Part of the Epwin Group

