



FOAMIX™

Low Carbon Recycled Asphalt

From Sitebatch Technologies®, part of the
Aggregate Industries Surfacing Solutions division

OUR COMMITMENT

Aggregate Industries is committed to developing innovative low carbon pavement solutions to assist in the immediate and sustained action that will lead to the desired decarbonisation of the UK's roads network. We are changing the way we construct by deploying the latest, high quality, material solutions and technical innovations to reduce carbon year-on-year across all our operations on our journey to Net Zero carbon.

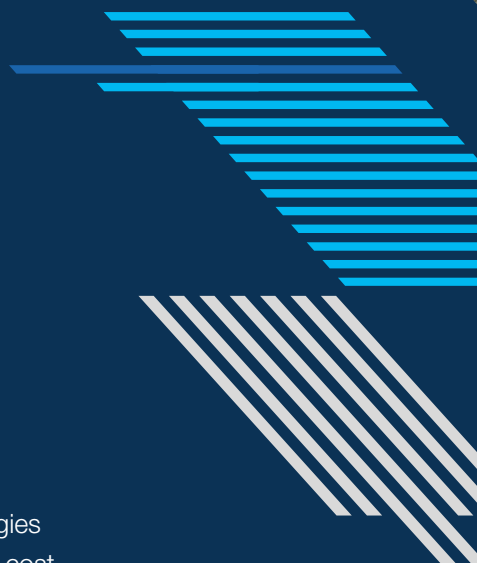
Driven by our purpose to build progress for people and the planet, we are driving the circular economy with green pavement solutions such as Foamix that offer **a reduced reliance on expensive and finite virgin aggregate and/or asphalt products** to make the most of taxpayer money and typically deliver **c.45% carbon reduction** to our clients.

WHAT IS FOAMIX ASPHALT

Foamix asphalt is a hybrid between Asphalt and Hydraulically Bound Material (HBM) commonly used in pavement construction. Manufactured as a cold mix, it contains a high recycled asphalt content resulting in a low manufacturing carbon footprint. It is manufactured to a high level of control and incorporates **up to 92% recycled materials** (reclaimed asphalt planings (RAP), plus bitumen, cement and water.

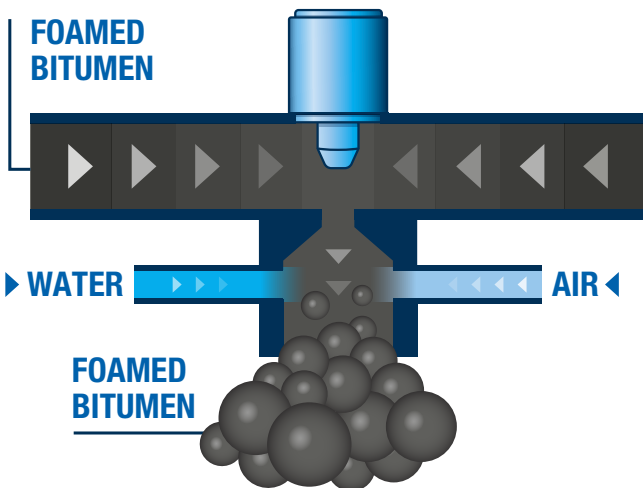
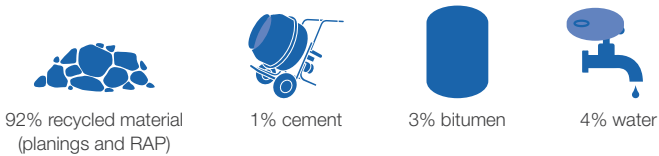
Using our fleet of Sitebatch Technologies mobile mixing plants, Foamix offers a cost-effective, sustainable solution to our customers for the construction, repair and maintenance of new or existing pavements whilst maximising the use of locally sourced recycled materials. It is laid and compacted like normal asphalt (only cold), without the need for any specialist paver or labour.

“DRIVEN BY OUR PURPOSE TO BUILD PROGRESS FOR PEOPLE AND THE PLANET, WE ARE DRIVING THE CIRCULAR ECONOMY WITH SOLUTIONS SUCH AS FOAMIX.”



HOW FOAMIX IS MADE

FOAMIX COMPRISES



Waste streams that are viable for recycled product manufacture include:

- ▶ Excavated road and footpath subbase layers
- ▶ Crushed concrete, flags, edgings & kerbs
- ▶ Excavated HBM/CBGM
- ▶ Non-hazardous planings
- ▶ Asphalt planings
- ▶ Tar-bound planings

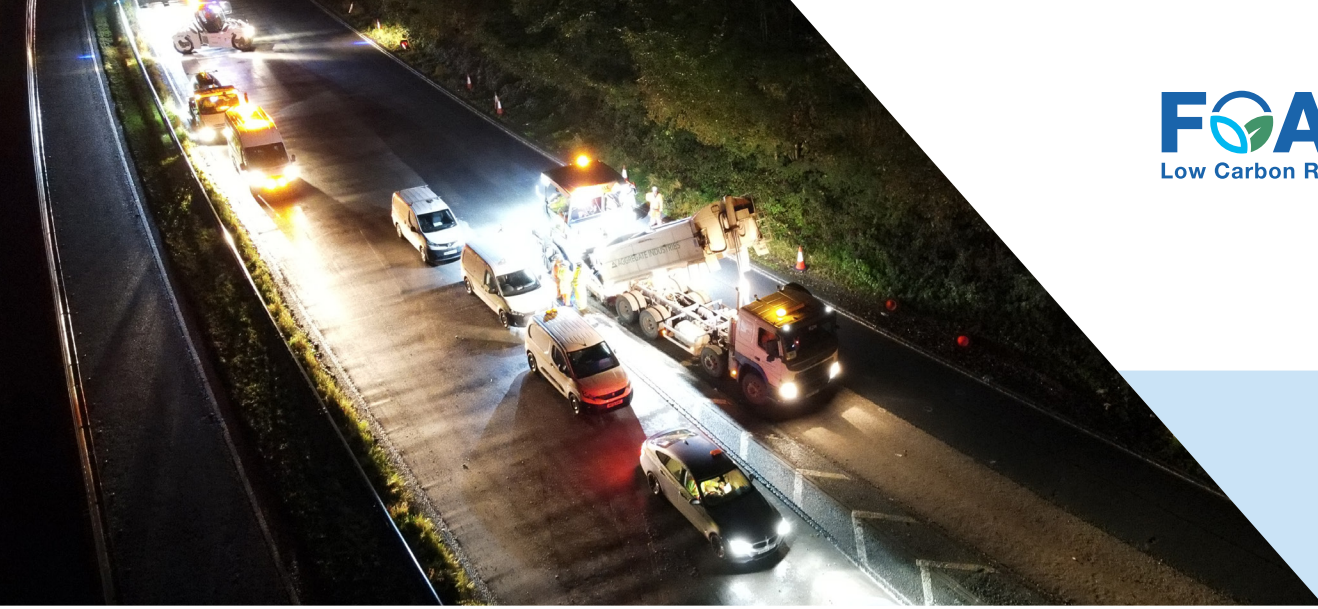
Cold water and air are injected into hot bitumen at high pressure resulting in 'foaming' which in turn increases bitumen volume and reduces viscosity for a short period to enable the coating of cold damp aggregate.



IT HAS NEVER BEEN MORE IMPORTANT TO MAKE SUSTAINABLE AND ETHICAL CHOICES.

As part of the Aggregate Industries sustainability strategy, we have identified products that are responsibly sourced, energy efficient and environmentally friendly. These products, including Foamix, can be identified by our Life badge.





APPLICATIONS

Foamix can be applied directly onto the subgrade layer (ie: Type 1) generating additional time/cost efficiencies. Manufactured Foamix can be immediately placed and compacted on site or it can be stockpiled for later use, extending working times ensuring continued supply.

Using our mobile mixing plant, we can encapsulate hazardous tar-bound planings from site as Foamix; this repurposes the contaminated arisings locally rendering them safe for re-use in construction and mitigates costly specialist disposal charges and delivers a carbon friendly, greener, sustainable solution to our clients.

DESIGN STANDARDS

Like for like, Foamix long-term stiffness equates to that of normal asphalts.

Table 7.2 TRL 611 SHW 948 & CD226 (HD26/06)

FOAMIX			
FOAMIX Grade	Minimum long term stiffness value	Asphalt Material	Stiffness
B1	1900MPa	HRA/DBM 190	1900MPa
B2	2500MPa	DBM 125	2500MPa
B3	3100MPa	HRA 50	3100MPa
B4	>4700MPa	DBM/HDM 50	4700MPa

(Typical carriageway stiffness for example would be designed to be between 3100-4700MPa; Footways normally 1900MPa or less).

IDEAL FOR:

- ▶ Major and minor road construction schemes.
- ▶ Haunch repairs
- ▶ Trench reinstatement
- ▶ Parking areas
- ▶ Cycle tracks
- ▶ Footpath
- ▶ Local housing estate roads



WHY CHOOSE FOAMIX

QUALITY

You can specify with confidence - Foamix is currently compliant with Specification for Highways Works Clause 948 Ex Situ Cold Recycled Bound Materials and BS 9228:2021. We follow industry standards for quality control, including UKAS Testing Schedules.

LONGEVITY

Foamix layers are not prone to cracking as a result of ageing; it brings greater bonding properties due to the RAP % used.

SAFER

Manufactured cold, Foamix asphalt significantly reduces nuisance fuming, odour and steam on site; material burn risks are eliminated, visibility is improved and operatives benefit from improved working conditions overall.

PUBLIC DISRUPTION MINIMISED

Laid cold, Foamix can be trafficked immediately enabling earlier reopening of carriageways to the travelling public, resulting in less traffic disruption and reduced build cost, making the most of taxpayers money.

CARBON

Foamix asphalt requires less energy to manufacture than conventional asphalt, giving a lower carbon footprint.

Foamix average saving over Hot Mix Asphalt across constituent parts >30% approx. Typically delivers c.45% carbon reduction to our client.

c. **45%**
**CARBON
REDUCTION**

WANT TO KNOW MORE?

Ask your sales representative for further details.
Visit www.aggregate.com/foamix for more information.

If you would like to speak to our technical team,
please email contracting@aggregate.com



 Aggregate UK

 Aggregate Industries UK

 AggregateInd