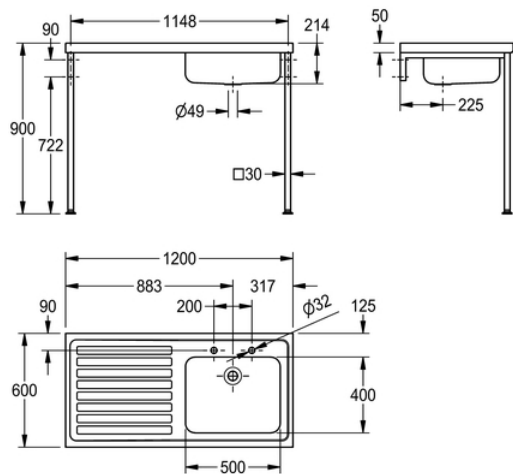


HOSPITAL SINK: G22006LT

G22006LT | 2000100265

ARTICLE GROUP : **G22006 ++** | ARTICLE FAMILY : **Lab sinks** | PRODUCT GROUP : **Hospital equipment**



A single bowl/single drainer sink manufactured from 1.2mm thick, grade 1.4301 (304) stainless steel, satin polish finish. This sink top is turned down on all four edges and incorporates a wet area recess. The bowl is prepared for a 38mm waste outlet.

L or R refers to the handing of the drainer ie. left or right when facing front of unit.

NOTE: It is not possible to fit an overflow. The sink top can either be mounted on wall brackets or front leg supports.

HTM64 STANDARD

Left hand drainer, with 2 tapholes at 200mm centres

TECHNICAL DATA

bowl - bowl depth	200.00 mm
bowl finish	satin finished
bowl - depth	500.00 mm
bowl - width	400.00 mm
drainer position	left
drainer or storage	drainer
gross weight	20.00 kg
material	stainless steel
material code	1.4301 Chrome Nickel steel V2A
material thickness	1.20 mm
overall depth	600.00 mm
overall height	218.00 mm
overall width	1,200.00 mm
surface finish	satin finished
tap ledge	yes
type of mounting	wall mounting
waste hole position	centre back
waste size	DN 32
net weight	11.50 kg

HOSPITAL SINK: G22006LT

G22006LT | 2000100265

ARTICLE GROUP : **G22006 ++** | ARTICLE FAMILY : **Lab sinks** | PRODUCT GROUP : **Hospital equipment**

ACCESSORY



TAP: F1074

2000100426



TAP: F1075

2000100427
