



SUSTAINABLE
BUILDINGS SYSTEMS

CURL Golf Driving Range

Durable, adaptable and cost effective

CURL Golf Driving Range Product Details and Specification

Overview:

CURL, a stylish modular golf driving range building, system for small to medium sized ranges.

Product Description:

CURL is a spacious, robust steel frame structure with an iconic curved roof and integrated rainwater system complemented by durable British Larch wall panels. The structure includes a broad walkway with integral seating and decking as an option.

Benefits:

- British engineered modular building system
- Easily expanded to meet the needs of the developing driving range
- long life building system with a 25 year design life terms & conditions apply
- 4r compliant (Relocate Renovate Reuse Relocate)
- Minimal maintenance
- Integrated rainwater system
- Space efficient - compact foot print

Features:

- Separated teaching bays
- Links course suitable building
- Integrated rainwater system
- Fully galvanised frame and fixings
- Weather protection for warm up and teaching

Options:

- Progressive teaching bays
- Full length seating
- Golf mat systems
- Café, breakout area
- Ball processing areas
- Automated ball teeing systems
- Advertising and brand opportunities
- Poor weather bay closure system
- PIR and Photocell controlled LED panel/flood lighting
- Suspended heavy duty Larch deck
- Customisable coloured mesh bay, dividers
- Wide palette of scheme colours available



Materials & Finishing:

Frame:	Steel (Grade CR4)
Finish:	Galvanised BS EN1461 1999
Roof:	Steel Trapezoidal, Colorcoat HPS200 Ultra®
Timber:	Heartwood Larch

Product Dimensions:

Overall:

(standalone standard building module)

- width 7050 x depth 6165 x height 4200mm

Internal Bay Dimensions:

(equivalent to two standard driving positions)

- width 6125 x depth 3500 x height 3830 mm

Internal Walkway Dimensions:

- width 6125 x depth 1700 x height 3200 mm

Warranty:

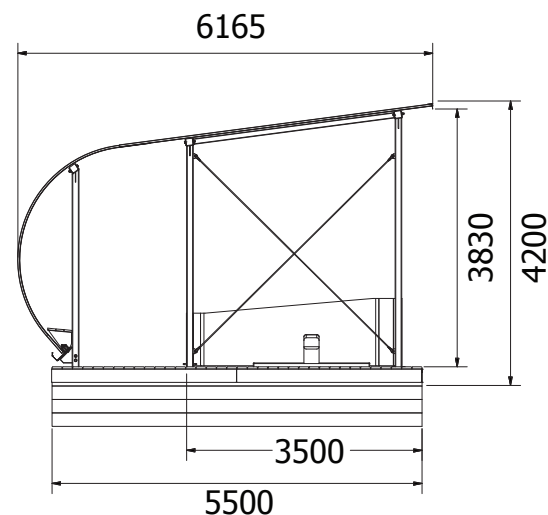
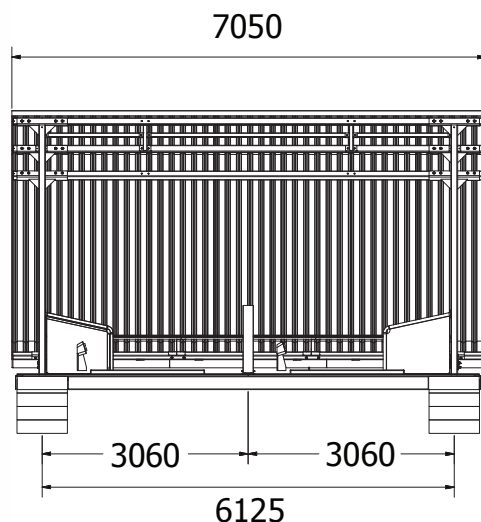
48 month Warranty (terms and conditions apply)

Environmental Info:

4r compliant (Relocate Renovate Reuse Recycle)
Manufactured and assembled in the UK.

Installation:

Installation should be carried out by H-B Designs Ltd or undertaken by a suitably qualified contractor to H-Bd Designs specification and standard.



Address:
The Big Barn
14 Greengate Road
Wedhampton
Devizes
Wiltshire
SN10 3QB

Contact:
01380 840 819
team@hbdesigns.co.uk
www.hbdesigns.co.uk