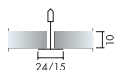


GYPTONE® QUATTRO A

Gyptone® Quattro A has an exposed grid system with easily demountable tiles. The tiles have a square perforation pattern.

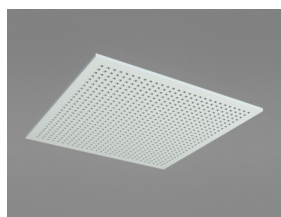


Gyptone® Quattro A

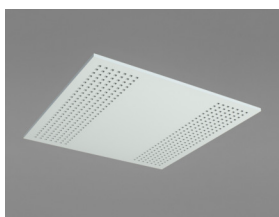


SYSTEM RANGE

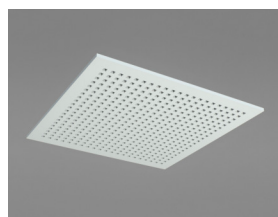
Size, mm	600x600
Connect T15	•
Connect T24	•
Thickness	10
Inst. Diagr.	M599



Quattro 20 A



Quattro 22 A



Quattro 50 A

TYPE OF APPLICATION

- Additional areas
- Education
- Office

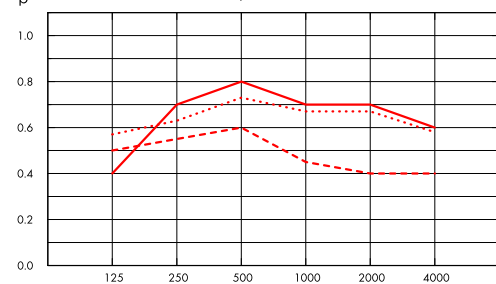


ACOUSTIC

Sound Absorption

Test results according to EN ISO 354. Classification according to EN ISO 11654, and the single value rating for Noise Reduction Coefficient, NRC, according to ASTM C 423.

α_p , Practical sound absorption coefficient



- Gyptone Quattro 20, 200 mm o.d.s.
 - - - Gyptone Quattro 22, 200 mm o.d.s.
 - ... Gyptone Quattro 50, 200 mm o.d.s.
- o.d.s = overall depth of system

	THK mm	o.d.s. mm	α_p , Practical sound absorption coefficient						α_w	Sound absorption class
			125 Hz	250 Hz	500 Hz	1000 Hz	2000 Hz	4000 Hz		
Quattro 20	10	200	0.40	0.70	0.80	0.70	0.70	0.60	0.70	C
Quattro 20 + Min. Wool 45 mm	55	58	0.35	0.65	0.85	0.85	0.75	0.70	0.80	B
Quattro 20 + Min. Wool 70 mm	80	300	0.45	0.70	0.75	0.80	0.80	0.70	0.80	B
Quattro 22	10	200	0.50	0.55	0.60	0.45	0.40	0.40	0.45	D
Quattro 22 + Min. Wool 50 mm	60	60	0.62	0.47	0.51	0.49	0.45	0.46	0.50	D
Quattro 50	10	200	0.57	0.63	0.73	0.67	0.67	0.58	0.70	C
Quattro 50 + Min. Wool 45 mm	55	58	0.35	0.65	0.80	0.80	0.75	0.65	0.80	B
Quattro 50 + Min. Wool 70 mm	80	300	0.45	0.70	0.75	0.80	0.75	0.65	0.75	C

	THK mm	o.d.s. mm	NRC
Quattro 20	10	200	0.70
Quattro 20 + Min. Wool 45 mm	55	58	0.80
Quattro 20 + Min. Wool 70 mm	80	300	0.75
Quattro 22	10	200	0.50
Quattro 22 + Min. Wool 50 mm	60	60	0.50
Quattro 50	10	200	0.70
Quattro 50 + Min. Wool 45 mm	55	58	0.75
Quattro 50 + Min. Wool 70 mm	80	300	0.75



VISUAL APPEARANCE

White, nearest NCS colour sample 0500, 70% light reflectance. Gloss 5 - 9.

Perforation Design	Perforated area (%)	Perforation size (mm)	Perforation distance , c/c, (mm)
Quattro 20	18	9 x 9	19,5
Quattro 22	9	9 x 9	19,5
Quattro 50	18	12x12	25



INDOOR AIR QUALITY

Certificate / Label	
French VOC	A+
Finnish M1	•
Danish Indeklima	•
Activ'Air, a patented technology that support active brake-down of formaldehyde into harmless, non-volatile compounds. The effectiveness of the Activ'Air technology has been tested by the accredited Eurofins laboratory.	•



CARBON FOOTPRINT

Life-cycle stages A1 to C4 from EPD, in conformity with ISO 14025 / EN 15804

	kg CO ₂ equiv/m ²
Gyptone 10 mm with Active'Air	3.04



CIRCULARITY

Fully recyclable.



FIRE SAFETY

Country		Class
Europe	EN 14190	A2-s1,d0



HUMIDITY RESISTANCE

Product	Humidity
Standard	Gyptone tiles should be used in areas with a relative humidity that does not constantly exceed 70% or temperature of 45°C.



CLEANABILITY

Clean with a damp cloth. Most standard cleaning agents can be used.



MAINTENANCE

The tiles are possible to re-paint with maintained acoustic properties as long as the tiles perforation is not at all covered by the paint



ACCESSIBILITY

The tiles are easily demountable. Minimum demounting depth according to installation diagrams.



INSTALLATION



SYSTEM WEIGHT

The weight of the system is approximately 8 kg /m².



MECHANICAL PROPERTIES

See table about Max live load and Min load bearing capacity and Functional demands, Mechanical properties at www.ecophon.com.



CE

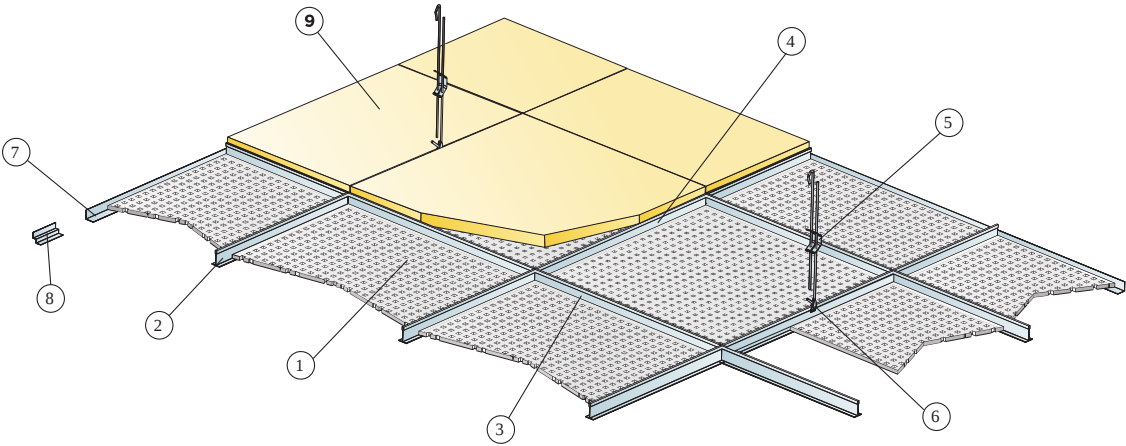
Gyptone® ceilings system is CE marked according to the European harmonized standard EN 14190:2014. CE marked construction products are covered by a Declaration of Performance (DOP) which enables customers and users to easily compare performance of products available on the European market.

COLOURS AND DESIGN

Gyptone colour

Gyptone White
NCS 0500

Suspended ceiling

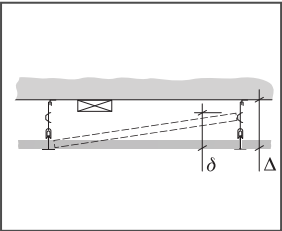


© Ecophon

Installation diagram (M599) for Gyptone Quattro A

Quantity specification (excl. wastage)

	Size, mm
	600x600
1 Gyptone Quattro A	2,8/m ²
2 Connect T24 or T15 Main runner, installed at 1200 mm centres (max. distance from wall 600 mm).	0,9m/m ²
3 Connect T24 or T15 Cross tee, L=1200 mm, installed at 600 mm centres	1,7m/m ²
4 Connect T24 or T15 Cross tee, L=600 mm	0,9m/m ²
5 Connect Adjustable Hanger, installed at 1200 mm centres (max. distance from wall 400 mm)	0,7/m ²
6 Connect Hanger Clip (not to be used in swimming hall environments)	0,7/m ²
7 Connect Angle trim, fixed at 300 mm centres	as required
8 Connect Shadow-line trim, fixed at 300 mm centres	as required
9 Mineral wool as required	-
Δ Min. overall depth of system: Δ1 114 mm / Δ2 55mm	-



Size, mm	Max live load (N)	Min load bearing capacity (N)
600x600x10	20(T24), 5(T15)	160

Live load/load bearing capacity