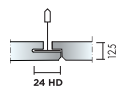


GYPTONE® QUATTRO D2

Gyptone® Quattro D2 has a concealed grid and bevelled edge with an even appearance. The tiles have a square perforation pattern.

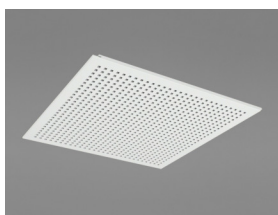


Gyptone® Quattro D2



SYSTEM RANGE

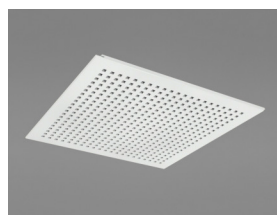
Size, mm	600x600
Connect T24 HD	•
Thickness	12,50
Inst. Diagr.	M601



Quattro 20 D2



Quattro 22 D2



Quattro 50 D2

TYPE OF APPLICATION

- Additional areas
- Education
- Office



ACOUSTIC

Sound Absorption

Test results according to EN ISO 354. Classification according to EN ISO 11654, and the single value rating for Noise Reduction Coefficient, NRC, according to ASTM C 423.

	THK mm	o.d.s. mm	α_p , Practical sound absorption coefficient						α_w	Sound absorption class
			125 Hz	250 Hz	500 Hz	1000 Hz	2000 Hz	4000 Hz		
Quattro 20	12.5	200	0.40	0.70	0.80	0.70	0.70	0.60	0.70	C
Quattro 20 + Min. Wool 70 mm	82.5	300	0.45	0.70	0.75	0.80	0.80	0.70	0.80	B
Quattro 20 + Min. Wool 45 mm	57.5	58	0.35	0.65	0.85	0.85	0.75	0.70	0.80	B
Quattro 22	12.5	200	0.50	0.55	0.60	0.45	0.40	0.40	0.45	D
Quattro 22 + Min. Wool 50 mm	62.5	63	0.62	0.47	0.51	0.49	0.45	0.46	0.50	D
Quattro 50	12.5	200	0.57	0.63	0.73	0.67	0.67	0.58	0.70	C
Quattro 50 + Min. Wool 45 mm	57.5	58	0.35	0.65	0.80	0.80	0.75	0.65	0.80	B
Quattro 50 + Min. Wool 70 mm	82.5	300	0.45	0.70	0.75	0.80	0.75	0.65	0.75	C

	THK mm	o.d.s. mm	NRC
Quattro 20	12.5	200	0.70
Quattro 20 + Min. Wool 70 mm	82.5	300	0.75
Quattro 20 + Min. Wool 45 mm	57.5	58	0.80
Quattro 22	12.5	200	0.50
Quattro 22 + Min. Wool 50 mm	62.5	63	0.50
Quattro 50	12.5	200	0.70
Quattro 50 + Min. Wool 45 mm	57.5	58	0.75
Quattro 50 + Min. Wool 70 mm	82.5	300	0.75



VISUAL APPEARANCE

White, nearest NCS colour sample 0500, 70% light reflectance. Gloss 5 - 9.

Perforation Design	Perforated area (%)	Perforation size (mm)	Perforation distance , c/c, (mm)
Quattro 20	18	9 x 9	19,5
Quattro 22	9	9 x 9	19,5
Quattro 50	18	12x12	25



INDOOR AIR QUALITY

Certificate / Label	
French VOC	A+
Finnish M1	•
Danish Indeklima	•
Activ'Air, a patented technology that support active brake-down of formaldehyde into harmless, non-volatile compounds. The effectiveness of the Activ'Air technology has been tested by the accredited Eurofins laboratory.	•



CARBON FOOTPRINT

Life-cycle stages A1 to C4 from EPD, in conformity with ISO 14025 / EN 15804

	kg CO ₂ equiv/m ²
Gyptone 12,5 mm with Active'Air	3.81



CIRCULARITY

Fully recyclable.



FIRE SAFETY

Country		Class
Europe	EN 14190	A2-s1,d0



HUMIDITY RESISTANCE

Product	Humidity
Standard	Gyptone tiles should be used in areas with a relative humidity that does not constantly exceed 70% or temperature of 45°C.



CLEANABILITY

Clean with a damp cloth. Most standard cleaning agents can be used.



MAINTENANCE

The tiles are possible to re-paint with maintained acoustic properties as long as the tiles perforation is not at all covered by the paint



ACCESSIBILITY

The tiles are easily demountable. Minimum demounting depth according to installation diagrams.



INSTALLATION



SYSTEM WEIGHT

Weight information is indicative and subject to variation.

	kg/m ²
Gyptone 12,5 mm	8
Gyptone 12,5 mm + GK-system 2 levels	10



MECHANICAL PROPERTIES

See table about Max live load and Min load bearing capacity and Functional demands, Mechanical properties at www.ecophon.com.



CE

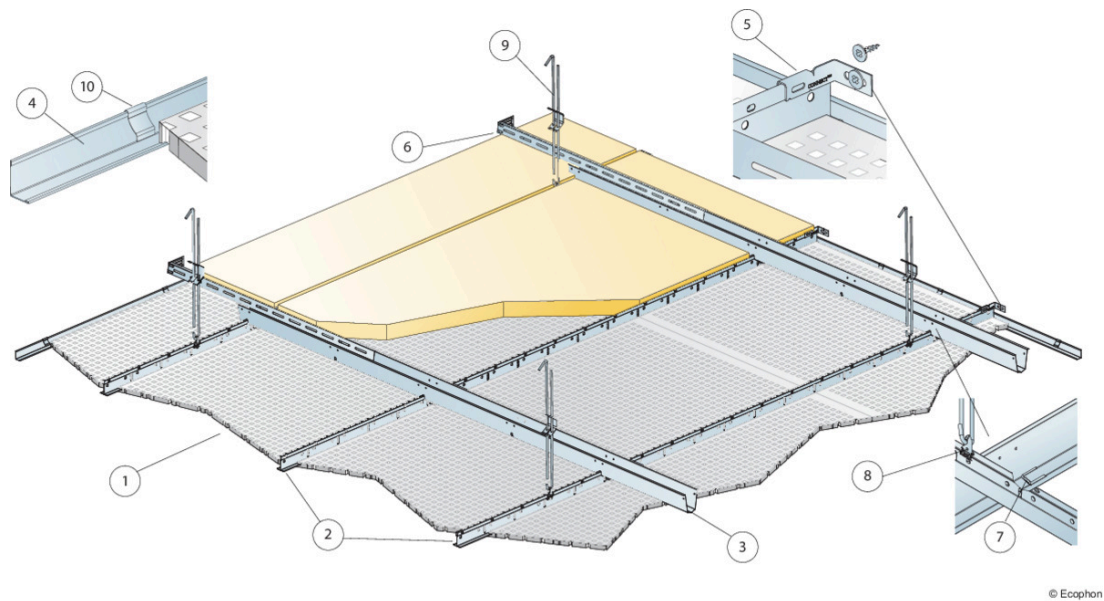
Gyptone® ceilings system is CE marked according to the European harmonized standard EN 14190:2014. CE marked construction products are covered by a Declaration of Performance (DOP) which enables customers and users to easily compare performance of products available on the European market.

COLOURS AND DESIGN

Gyptone colour



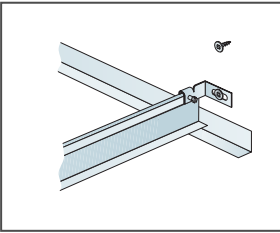
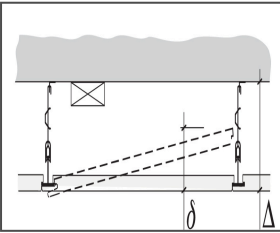
Suspended ceiling



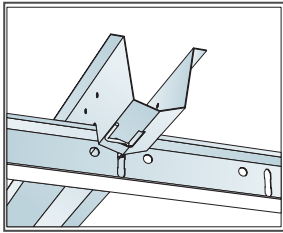
Installation diagram (M206) for Gyptone Quattro D2 600x600

Quantity specification (excl. wastage)

	Size, mm
	600x600
1 Gyptone Quattro D2	2,8/m ²
2 Connect T24 Main Runner HD, installed at 600 mm centres	1,7m/m ²
3 Connect Space Bar, installed at 1200 mm centres (max. distance from wall 300 mm)	0,9m/m ²
4 Connect Angle trim 15/22, fixed at 300 mm centres	as required
5 Connect Wall Bracket for T-profiles	2/row of Main runner
6 Connect Wall Bracket, L=700 mm, for Connect Space Bar	2/row of Space bar
7 Connect Space Bar Winch, installed one per joint Connect Main Runner/Connect Space Bar	1,4/m ²
8 Connect Hanger Clip (not to be used in swimming hall environments)	0,7/m ²
9 Connect Adjustable Hanger, installed at 1200 mm centres (max. distance from wall 300 mm)	0,7/m ²
10 Connect Wall spring	2 pcs/ tile or perimeter tile, against the wall
11 Mineral wool as required	-
Δ Min. overall depth of system: 150 mm	-



Secured Main runner at wall with Connect Wall bracket



Size, mm	Max live load (N)	Min load bearing capacity (N)
600x600x12,50	0	160

Live load/load bearing capacity