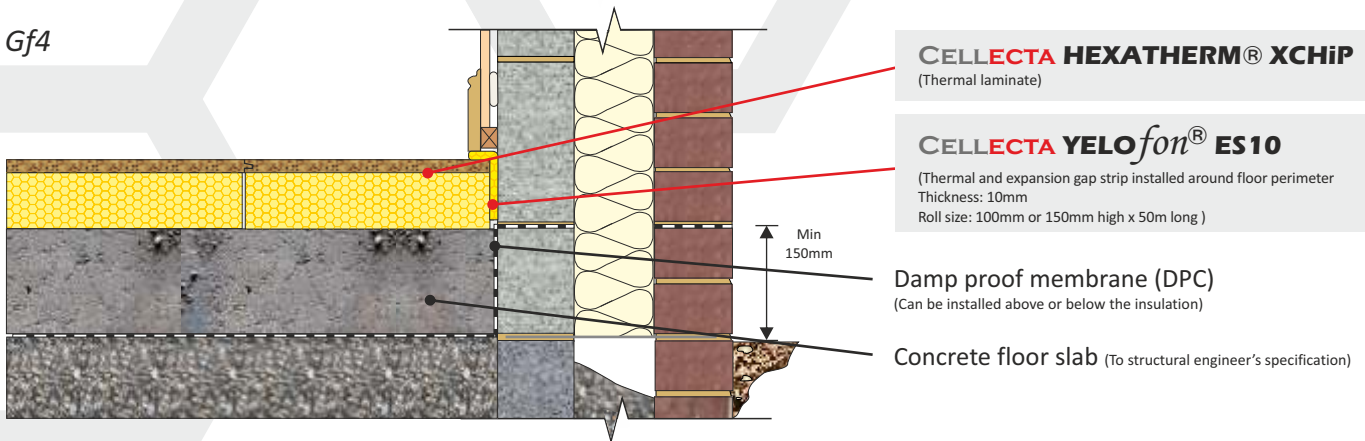


CELLECTA HEXATHERM® XCHIP chipboard/thermal laminate floor board  
In-situ concrete floor slab

Gf4



FASTRACKCAD  
ARCHITECTURAL CAD DATABASES

n5nPlus

FASTRACKBIM  
ARCHITECTURAL BIM DATABASES

## PRODUCT INFORMATION



CELLECTA XCHIP combines the benefits of a **HEXATHERM** high performance thermal insulation with a tongue and groove moisture resistant chipboard to produce a high compressive strength, interlocking floor board

### PRODUCT BENEFITS

- ⬢ Excellent life-long thermal performance
- ⬢ High compressive strength
- ⬢ Interlocking, moisture resistant chipboard facing
- ⬢ Quick to install

### PHYSICAL PROPERTIES (Insulation layer)

	XCHIP
Thermal Conductivity	0.035
EN 12667 (W/mK)	0.035
Strength at 10% compression	250
EN 826 (kPa) ≥40mm	300
Strength at 2% compression	80
EN 1606 (kPa) ≥40mm	125
Long term water absorption by immersion	0.7%
EN 12087	
Temperature range	-50/+75 °C
Board size (mm)	600 x 2400
Overall thickness' including 18mm P5 chipboard facing (mm)	38 43 48 58 68 78 93 98 118 138 138 178
(other sizes manufactured to order)	
Edge profile	T&G

## TYPICAL THICKNESS OF INSULATION REQUIRED

P/A ratio	HEXATHERM® XPOOL® (mm)							
0.7	90	110	125	150	165	200	240	290
0.6	90	110	120	140	160	200	240	290
0.5	75	100	110	130	150	200	240	280
0.4	75	90	100	120	140	180	220	270
0.3	60	75	90	110	130	160	200	250
	0.25	0.22	0.20	0.18	0.16	0.14	0.12	0.10

U-value (W/m<sup>2</sup>K)

Calculated in accordance with ISO 13370

## THIRD PARTY ACCREDITATION & APPROVALS

BM TRADA<sup>(2)</sup> Q Mark certified product  
NHBC, LABC and Premier guarantee accepted  
BREAM MAT 6 compliant<sup>(3)</sup>

## STANDARDS

EN 13164: 2012  
ISO 9001 - Quality management system (QMS)<sup>(2)</sup>  
ISO 14001 - Environmental management system (EMS)<sup>(2)</sup>



## ENVIRONMENTAL CREDENTIALS



## CODE FOR SUSTAINABLE HOMES

The following Code for Sustainable Homes credits are obtainable as a result of incorporating **HEXATHERM®** into the construction detailed.

Pol 1		Mat 1	
		Element N°	122010009
GWP value	<5	Green Guide rating	C
Code credits	1	Code credits	0.5

Note. Pol.1 Code credits have an approximate weighted value of 0.7

Note. Mat 1 Code credits have an approximate weighted value of 0.3

(2) Currently undergoing assessment. (3) On completion of ISO14001 assessment.