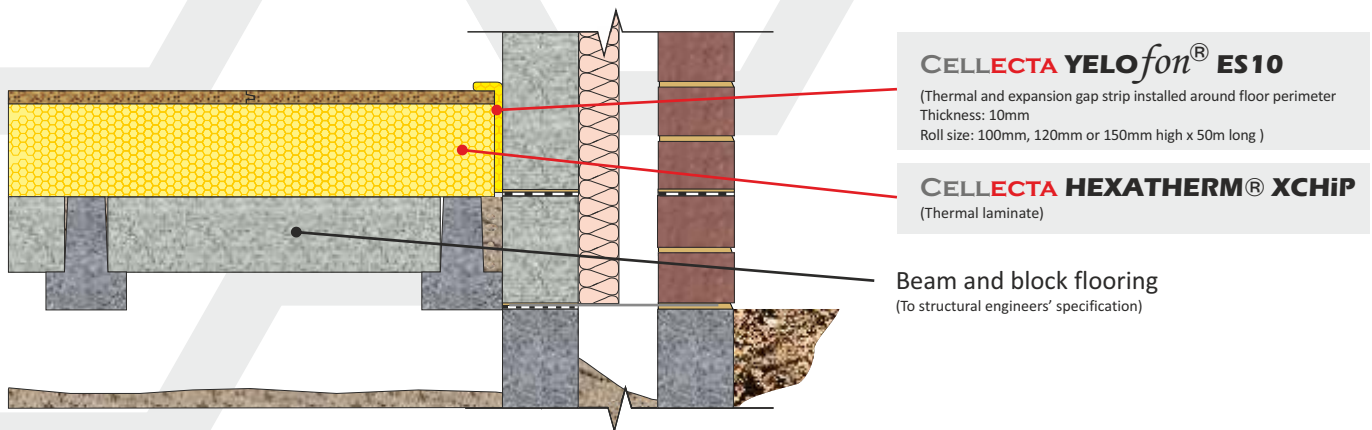


CELLECTA HEXATHERM® XCHIP chipboard/thermal laminate floor board
Suspended beam and block floor



PRODUCT INFORMATION



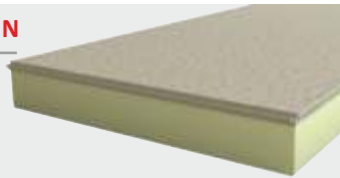
CELLECTA XCHIP combines the benefits of a **HEXATHERM** high performance thermal insulation with a tongue and groove moisture resistant chipboard to produce a high compressive strength, interlocking floor board

PRODUCT BENEFITS

- ⬢ Excellent life-long thermal performance
- ⬢ High compressive strength
- ⬢ Interlocking, moisture resistant chipboard facing
- ⬢ Quick to install

PHYSICAL PROPERTIES (Insulation layer)

	XCHIP
Thermal Conductivity EN 12667 (W/mK)	≤30mm 0.035 ≥40mm 0.035
Strength at 10% compression EN 826 (kPa)	≤30mm 250 ≥40mm 300
Strength at 2% compression EN 1606 (kPa)	≤30mm 80 ≥40mm 125
Long term water absorption by immersion EN 12087	0.7%
Temperature range	-50/+75 °C
Board size (mm)	600 x 2400
Overall thickness' including 18mm P5 chipboard facing (mm) (other sizes manufactured to order)	38 43 48 58 68 78 93 98 118 138 138 178
Edge profile	T&G



TYPICAL THICKNESS OF INSULATION COMPOSITE REQUIRED

P/A ratio	HEXATHERM XCHIP (mm)							
0.7	90	110	125	150	165	190	225	280
0.6	90	110	120	140	160	185	225	275
0.5	75	100	110	130	150	180	220	270
0.4	75	90	100	120	140	175	210	265
0.3	60	75	90	110	135	165	200	260
	0.25	0.22	0.20	0.18	0.16	0.14	0.12	0.10

U-value (W/m²K)

Calculated in accordance with ISO 13370

THIRD PARTY ACCREDITATION & APPROVALS

BM TRADA⁽²⁾ Q Mark certified product
NHBC, LABC and Premier guarantee accepted
BREAM MAT 6 compliant⁽³⁾

STANDARDS

EN 13164: 2012
ISO 9001 - Quality management system (QMS)⁽²⁾
ISO 14001 - Environmental management system (EMS)⁽²⁾



ENVIRONMENTAL CREDENTIALS



CODE FOR SUSTAINABLE HOMES

The following Code for Sustainable Homes credits are obtainable as a result of incorporating **HEXATHERM®** into the construction detailed.

Pol 1		Mat 1	
		Element N°	820140019
GWP value	<5	Green Guide rating	A+
Code credits	1	Code credits	3

Note. Pol.1 Code credits have an approximate weighted value of 0.7

Note. Mat 1 Code credits have an approximate weighted value of 0.3

(2) Currently undergoing assessment. (3) On completion of ISO14001 assessment.