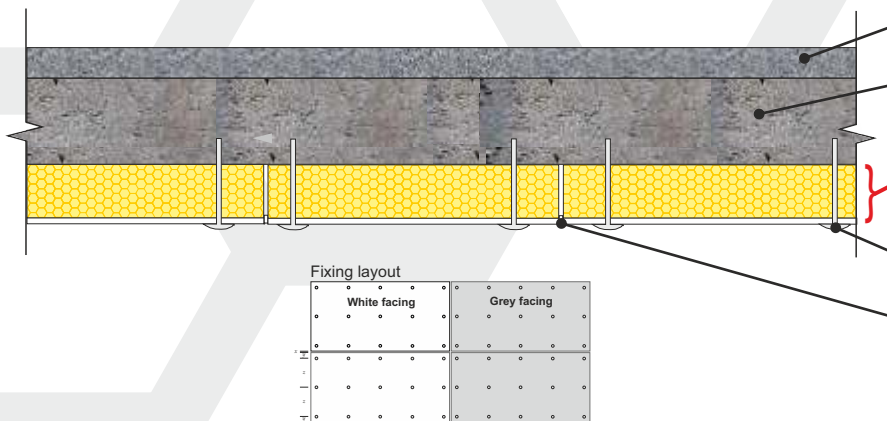


Insulation fixed to underside of the slab



PRODUCT INFORMATION



XCPL combine the benefits of a high performance extruded polystyrene with a facing board to produce a composite thermal board to suit car park and soffit lining applications

PRODUCT BENEFITS

- Excellent life-long thermal performance
- High compressive strength
- Very low water absorption
- Closed cell structure

PHYSICAL PROPERTIES

| | | Grade | | | |
|---|-------------------------------------|------------|--------------------------------|---------------------|--------------------------|
| | | 250 | 300 | 500 | 700 |
| Thermal Conductivity | ≤60mm | 0.035 | 0.035 | 0.035 | 0.034 |
| BS EN 12667 (W/mK) | ≥70mm | - | 0.035 | 0.035 | 0.036 |
| Compressive strength | | 250 | 300 | 500 | 700 |
| BS EN 826 | | kPa | kPa | kPa | kPa |
| Compressive strength | | 80 | 125 | 180 | 250 |
| BS EN 1606 | | kPa | kPa | kPa | kPa |
| Long term water absorption by immersion | BS EN 12087 | 0.7% | 0.7% | 0.7% | 0.7% |
| Temperature range | | -50/+75 °C | -50/+75 °C | -50/+75 °C | -50/+75 °C |
| Board size (mm) | | 600 x 2500 | 600 x 2500 | 600 x 1250 | 600 x 1250 |
| Thickness* (mm) | (other sizes manufactured to order) | 20 25 30 | 40 50 60 75 80 100 120 140 160 | 50 60 75 80 100 120 | 50 60 80 100 120 140 160 |
| Edge profile | | | | | |
| | | Square | Square | Shiplap | Shiplap |

(A) Excluding XFLOOR 500

TYPICAL THICKNESS OF INSULATION REQUIRED

| P/A ratio | HEXATHERM XCPL 300 (mm) | | | | | | | |
|-----------|-------------------------|------|------|------|------|------|------|------|
| 0.7 | 90 | 110 | 125 | 150 | 165 | 150 | 165 | 150 |
| 0.6 | 90 | 110 | 120 | 140 | 160 | 140 | 160 | 140 |
| 0.5 | 75 | 100 | 110 | 130 | 150 | 130 | 150 | 130 |
| 0.4 | 75 | 90 | 100 | 120 | 140 | 120 | 140 | 120 |
| 0.3 | 60 | 75 | 90 | 110 | 130 | 110 | 130 | 110 |
| | 0.25 | 0.22 | 0.20 | 0.18 | 0.16 | 0.14 | 0.12 | 0.10 |

U-value (W/m²K)

Calculated in accordance with ISO 13370

THIRD PARTY ACCREDITATION & APPROVALS

STANDARDS

EN 13164: 2012

ISO 9001 - Quality management system (QMS)

ISO 14001 - Environmental management system (EMS)



ENVIRONMENTAL CREDENTIALS



CODE FOR SUSTAINABLE HOMES

The following Code for Sustainable Homes credits are obtainable as a result of incorporating **HEXATHERM** into the construction detailed.

| Pol 1 | | Mat 1 | |
|--------------|----|--------------------|-----------|
| | | Element N° | 820100034 |
| GWP value | <5 | Green Guide rating | D |
| Code credits | 1 | Code credits | 1 |

Note. Pol.1 Code credits have an approximate weighted value of 0.7

Note. Mat 1 Code credits have an approximate weighted value of 0.3