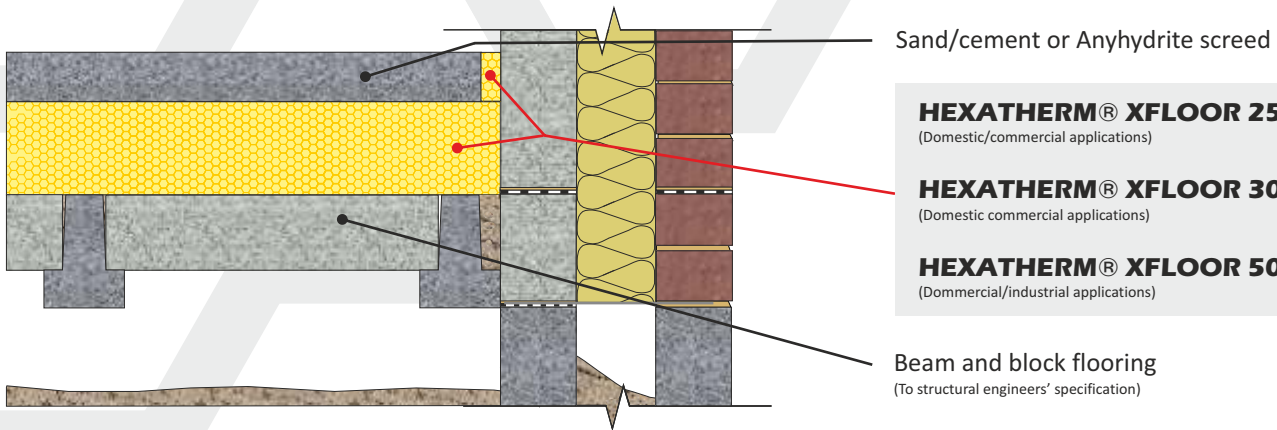


# SUSPENDED BEAM AND BLOCK GROUND FLOOR

CELLECTA **HEXATHERM® XFLOOR** insulation installed below floating screed  
Suspended pre-stressed concrete beam and block floor



- HEXATHERM® XFLOOR 250**  
(Domestic/commercial applications)
- HEXATHERM® XFLOOR 300**  
(Domestic commercial applications)
- HEXATHERM® XFLOOR 500**  
(Dommercial/industrial applications)

Beam and block flooring  
(To structural engineers' specification)



## PRODUCT INFORMATION



**XFLOOR** extruded polystyrene thermal insulation boards are designed specifically for domestic, commercial and industrial flooring applications where a high resistance to compression and water absorption is required.

## PRODUCT BENEFITS

- Excellent life-long thermal performance
- High compressive strength
- Very low water absorption
- Closed cell structure

## PHYSICAL PROPERTIES

	<b>XFLOOR</b>		
	<b>250</b>	<b>300</b>	<b>500</b>
Thermal Conductivity $\leq 60\text{mm}$ EN 12667 (W/mK)	0.035	-	0.035
	-	0.035	0.035
Strength at 10% compression EN 826 (kPa)	250 kPa	300 kPa	500 kPa
Strength at 2% compression EN 1606 (kPa)	80 kPa	125 kPa	180 kPa
Long term water absorption by immersion EN 12087	0.7%	0.7%	0.7%
Temperature range	-50/+75 °C	-50/+75 °C	-50/+75 °C
Board size (mm)	600 x 2500	600 x 2500	600 x 1250
Thickness* (mm) (other sizes manufactured to order)	20 25 30	40 50 60 75 80 100 120 140 160	50 60 75 80 100 120 140
Edge profile			
	Square	Square	Shiplap

(1) Excluding XFLOOR 500

(2) Currently undergoing assessment. (3) On completion of ISO14001 assessment.

## TYPICAL THICKNESS OF INSULATION REQUIRED

P/A ratio	<b>HEXATHERM XChIP (mm)</b>							
<b>0.7</b>	90	110	125	150	165	190	225	280
<b>0.6</b>	90	110	120	140	160	185	225	275
<b>0.5</b>	75	100	110	130	150	180	220	270
<b>0.4</b>	75	90	100	120	140	175	210	265
<b>0.3</b>	60	75	90	110	135	165	200	260
	<b>0.25</b>	<b>0.22</b>	<b>0.20</b>	<b>0.18</b>	<b>0.16</b>	<b>0.14</b>	<b>0.12</b>	<b>0.10</b>

**U-value (W/m<sup>2</sup>K)**

Calculated in accordance with ISO 13370

## THIRD PARTY ACCREDITATION & APPROVALS

BM TRADA<sup>(2)</sup> Q Mark certified product  
NHBC, LABC and Premier guarantee accepted  
BREAM MAT 6 compliant<sup>(3)</sup>

## STANDARDS

EN 13164: 2012  
ISO 9001 - Quality management system (QMS)<sup>(2)</sup>  
ISO 14001 - Environmental management system (EMS)<sup>(2)</sup>



## ENVIRONMENTAL CREDENTIALS



## CODE FOR SUSTAINABLE HOMES

The following Code for Sustainable Homes credits are obtainable as a result of incorporating **HEXATHERM®** into the construction detailed.

<b>Pol 1</b>		<b>Mat 1</b>	
		Element N°	820140014
GWP value	<5	Green Guide rating	B
Code credits	1	Code credits	1

Note. Pol.1 Code credits have an approximate weighted value of 0.7

Note. Mat 1 Code credits have an approximate weighted value of 0.3