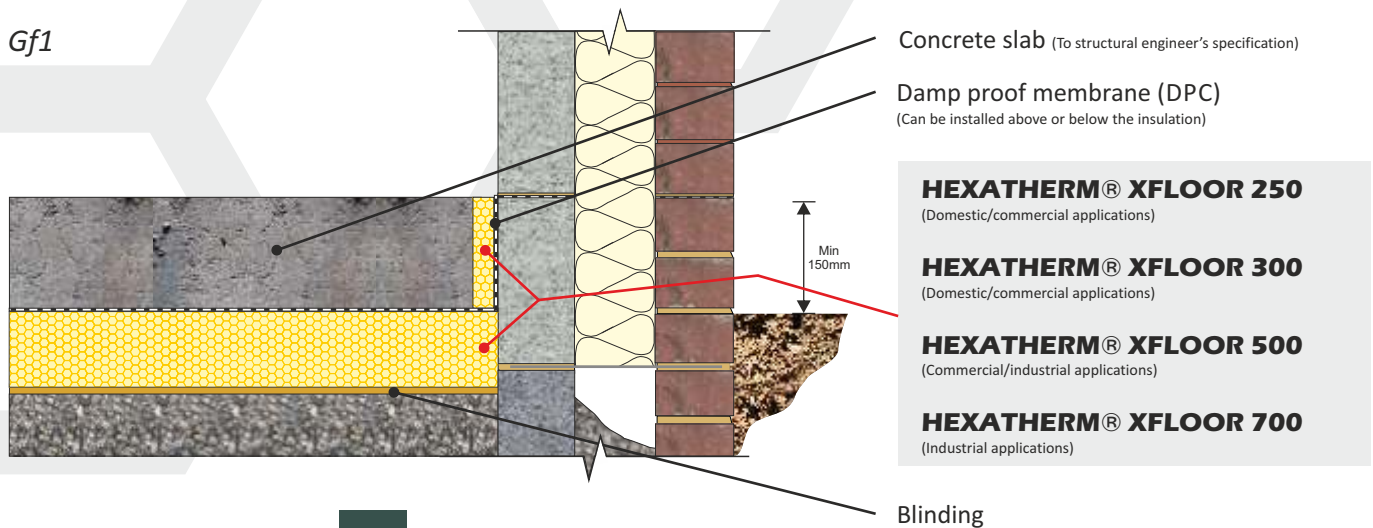


CELLECTA HEXATHERM® XFLOOR insulation installed below the concrete slab

Gf1



- HEXATHERM® XFLOOR 250**
(Domestic/commercial applications)
- HEXATHERM® XFLOOR 300**
(Domestic/commercial applications)
- HEXATHERM® XFLOOR 500**
(Commercial/industrial applications)
- HEXATHERM® XFLOOR 700**
(Industrial applications)



PRODUCT INFORMATION



XFLOOR extruded polystyrene thermal insulation boards are designed specifically for domestic, commercial and industrial flooring applications where a high resistance to compression and water absorption is required.

PRODUCT BENEFITS

- ⬡ Excellent life-long thermal performance
- ⬡ High compressive strength
- ⬡ Very low water absorption
- ⬡ Closed cell structure

PHYSICAL PROPERTIES

	XFLOOR			
	250	300	500	700
Thermal Conductivity $\leq 30\text{mm}$ EN 12667 (W/mK)	0.035 -	- 0.035	0.035 0.035	0.034 0.036
Strength at 10% compression EN 826 (kPa)	250 kPa	300 kPa	500 kPa	700 kPa
Strength at 2% compression EN 1606 (kPa)	80 kPa	125 kPa	180 kPa	250 kPa
Long term water absorption by immersion EN 12087	0.7%	0.7%	0.7%	0.7%
Temperature range	-50/+75 °C	-50/+75 °C	-50/+75 °C	-50/+75 °C
Board size (mm)	600 x 2500	600 x 2500	600 x 1250	600 x 1250
Thickness* (mm) (other sizes manufactured to order)	20 25 30	40 50 60 75 80 100 120 140 160	50 60 75 80 100 120 140 160	50 60 80 100 120 140 160
Edge profile				
	Square	Square	Shiplap	Shiplap

(1) Excluding XFLOOR 500

(2) Currently undergoing assessment. (3) On completion of ISO14001 assessment.

TYPICAL THICKNESS OF INSULATION REQUIRED

P/A ratio	HEXATHERM® XPOOL® (mm)							
0.7	90	110	125	150	165	200	240	290
0.6	90	110	120	140	160	200	240	290
0.5	75	100	110	130	150	200	240	280
0.4	75	90	100	120	140	180	220	270
0.3	60	75	90	110	130	160	200	250
	0.25	0.22	0.20	0.18	0.16	0.14	0.12	0.10

U-value (W/m²K)

Calculated in accordance with ISO 13370

THIRD PARTY ACCREDITATION & APPROVALS

BM TRADA⁽²⁾ Q Mark certified product
NHBC, LABC and Premier guarantee accepted
BREAM MAT 6 compliant⁽³⁾

STANDARDS

EN 13164: 2012
ISO 9001 - Quality management system (QMS)⁽²⁾
ISO 14001 - Environmental management system (EMS)⁽²⁾



ENVIRONMENTAL CREDENTIALS



CODE FOR SUSTAINABLE HOMES

The following Code for Sustainable Homes credits are obtainable as a result of incorporating **HEXATHERM®** into the construction detailed.

Pol 1		Mat 1	
		Element N°	820100010
GWP value	<5	Green Guide rating	C
Code credits	1	Code credits	0.5

Note. Pol.1 Code credits have an approximate weighted value of 0.7

Note. Mat 1 Code credits have an approximate weighted value of 0.3