



## Rubber Flooring Collection

*Jougnent*





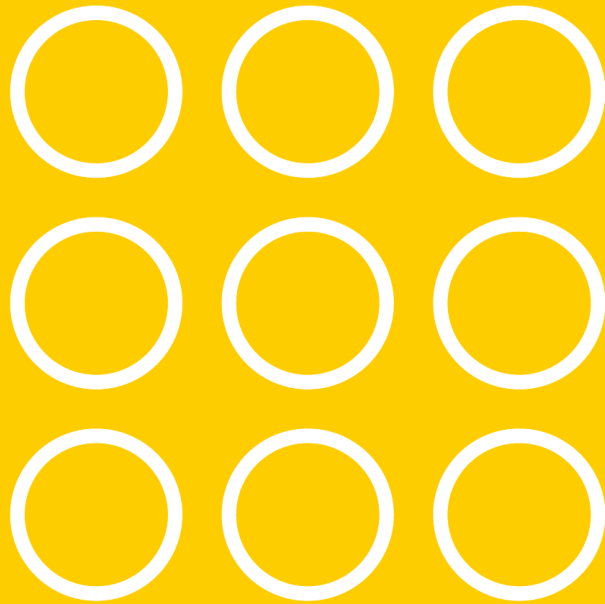
Rubber is a versatile, heavy duty, environmentally friendly floorcovering.

Jaymart can offer a wide range of rubber flooring in rolls and tiles, in an extensive and vibrant colour palette for use in every application imaginable such as Gyms, Airports, Banks, Barracks, Public Buildings, Apartment Blocks, Chain Stores, Cinemas, Colleges, Office Buildings, Department Stores, Factories, Hospitals, Hotels, Homes, Sports and Leisure Centres, Stadia, Theatres, Universities



### **Our range of rubber flooring offers the following key features and benefits**

- Rubber is extremely durable and hardwearing leading to long life expectancy and further conservation of material resources.
- Jaymart rubber flooring is coated with a factory applied finish to prevent marking and making it easier to maintain reducing cleaning costs and use of harmful chemicals to maintain the floorcovering.
- Rubber is environmentally friendly - it contains no PVCs, Plasticers or halogens. Leading to a healthier environment in the application
- Toxologically safe
- Flame retardant - Rubber flooring guarantees low Opacity and smoke toxicity in the case of fire.
- Good resistance to chemicals (Even diluted acids!) and oils



## DUOFLOOR

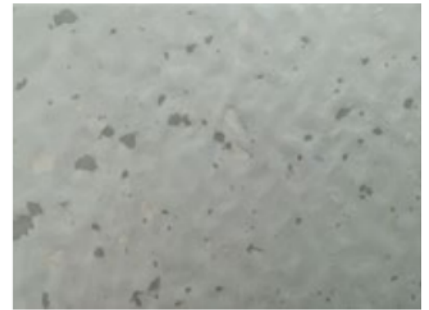
Pavimento in gomma con superficie martellata, con granuli in tono con la base, con rovescio smerigliato per la posa con adesivo.  
*Tone on tone tiles with hammered surface for very heavy traffic areas.*



DF 32



DF 110



DF 107



DF 12



DF 117



DF 105



DF 11



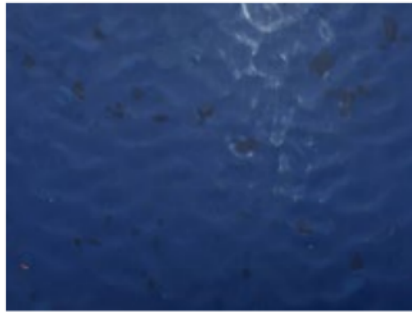
DF 126



DF 103



DF 125



DF 114



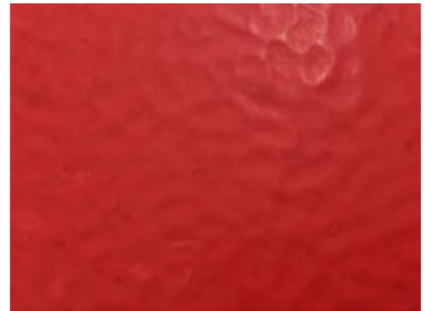
DF 20



DF 115



DF 512



DF 124



DF 118



DF 112



DF 106

Proprietà secondo EN 14 041/EN 12 199/EN 1817 <i>Properties according to EN 14 041/EN 12 199/EN 1817</i>	Norma di prova <i>Test method</i>	U.m. & Requisiti <i>U.m. &amp; Requirements</i>	Valori medi risultanti da collaudi della produzione in corso <i>Average test results from running production</i>	
Spessore <i>Thickness</i>	UNI EN ISO 24346 (Ex. EN 428)	Valore medio senza retro espanso $\pm 0,15$ mm	2,5 mm	3,5 mm
Durezza <i>Hardness</i>	UNI EN ISO 7619-1	$\geq 70$ Shore A	88 $\pm$ 3	
Resistenza all'abrasione a 5 N di carico <i>Abrasion resistance at 5 N load</i>	ISO 4649 Procedura A <i>Procedure A</i>	$\leq 250$ mm <sup>3</sup>	160 mm <sup>3</sup>	
Impronta residua <i>Residual indentation</i>	UNI EN ISO 24343 (Ex. EN 433)	Valore medio $\leq 0,20$ mm a spessore $\geq 2,5$ mm <i>Mean value <math>\leq 0,20</math>mm at thickness <math>\geq 2,5</math> mm</i>	0,050 mm	0,080 mm
Stabilità dimensionale <i>Dimensional stability</i>	UNI EN ISO 23999 (Ex. EN 434)	$\pm 0,4\%$	$\pm 0,3\%$	
Flessibilità <i>Flexibility</i>	UNI EN ISO 24344 (Ex. EN 435 Procedura A - <i>Procedure A</i> )	Diametro del mandrino 20 mm nessuna formazione di fessura <i>Mandrel diameter 20 mm no fissuring</i>	Conforme <i>Fulfilled</i>	
Resistenza alla lacerazione <i>Tear strength</i>	ISO 34-1 Procedura A, Metodo B <i>Procedure A, Method B</i>	Valore medio $\geq 20$ N/mm <i>Mean value <math>\geq 20</math> N/mm</i>	Conforme <i>Fulfilled</i>	
Solidità dei colori alla luce artificiale <i>Color fastness to artificial light</i>	ISO 105-B02 Procedura 3 <i>Procedure 3</i>	Almeno 6 sulla scala del blu: $\geq$ livello 3 sulla scala del grigio (= 350 Mlxm <sup>2</sup> ) <i>At least level 6 on the blue scale: <math>\geq</math> level 3 on the grey scale (= 350 Mlxm<sup>2</sup>)</i>	Conforme <i>Fulfilled</i>	
Resistenza alla brace di sigaretta <i>Cigarette-burn resistance</i>	EN 1399 Procedura A - B <i>Procedure A - B</i>	Procedura A (espulso) $\geq$ livello 4 Procedura B (in fiamme) $\geq$ livello 3 Procedura A (stubby out) level $\geq 4$ Procedura B (burning) level $\geq 3$	Conforme <i>Fulfilled</i>	
Tossicità fumi <i>Smoke toxicity</i>	BS 6853 Ann. B.2	$\leq 5$ R	Conforme <i>Fulfilled</i>	
Classificazione <i>Classification</i>	UNI EN ISO 10874 (Ex. EN 685)	Abitazioni - Negozi - Industrie <i>Residential - Commercial - Industrial</i>	23/32/42	23/34/43
Resistenza alla trasmissione del calore <i>Thermal conductivity</i>	DIN 52 612	-	0,022 m <sup>2</sup> K/W	
Reazione alle sostanze chimiche <i>Effect of chemicals</i>	UNI EN ISO 26987 (Ex. EN 423)	-	Dipende dalla concentrazione e dal tempo d'azione <i>Resistant depending on concentration and time of exposure</i>	
Fattore di correzione del rumore da calpestio <i>Improvement in footfall sound absorption</i>	UNI EN ISO 10140-3 (Ex. ISO 140 - 8)	-	6 dB	12 dB
Proprietà elettro-isolante <i>Electrical insulation properties</i>	IEC 60093	-	$> 10^{10}$ Ohm	
Carica elettrostatica da calpestio <i>Electrical propensity when walked upon</i>	EN 1815	-	Antistatico, carica elettrostatica in caso di soles in gomma $\leq 2$ KV <i>Antistatic - charging in case of rubber soles <math>\leq 2</math>KV</i>	
Effetto sedia a rotelle <i>Effect of a castor chair</i>	EN 425	-	Prova di rulli, tipoW, conformi alla norma EN 12529 <i>Suitable if castor wheels, typeW, according to EN 12529 are used</i>	
Resistenza allo scivolamento <i>Slip resistance</i>	EN 13 893	$\geq 0,30$ DS	DS	
Classe antincendio <i>Reaction to fire</i>	EN 13 501 - 1	-	Bfl - s1 Appoggiato o Incollato <i>Not bonded or Bonded</i>	
I DATI TECNICI POSSONO ESSERE SOGGETTI A MODIFICHE SENZA PREAVVISO <i>TECHNICAL DATA ARE SUBJECT TO CHANGE WITHOUT NOTICE</i>		EN 12 199 Pavimenti di gomma con rilievo omogenei ed eterogenei <i>EN 12 199 Specification for homogeneous and heterogeneous profiled rubber floor coverings</i> EN 1817 Pavimenti di gomma lisci omogenei ed eterogenei <i>EN 1817 Specification for homogeneous and heterogeneous smooth rubber floor coverings</i>		

 500x500 | 1000x1000mm  2,5 mm  kg/m<sup>2</sup> 4,00

 500x500 | 1000x1000mm  3,5 mm  kg/m<sup>2</sup> 5,50







# SUBER

Pavimento in gomma con superficie liscia con sughero, fonoassorbente ed antiscivolo, rovescio smerigliato per la posa con adesivo.  
*Solid colour tiles, textured surface with cork chips to create a natural effect finish.*



CRK 4015



CRK 4031



CRK 4008



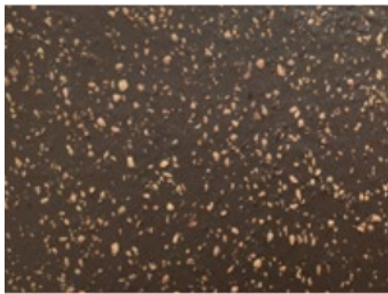
CRK 4047



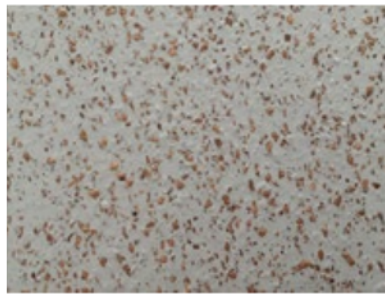
CRK 4025



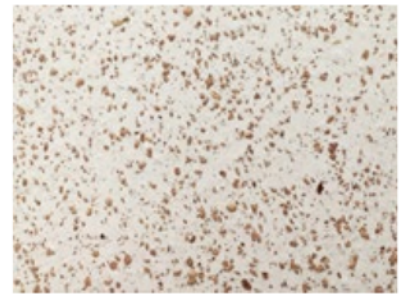
CRK 4024



CRK 4007



CRK 4005



CRK 4033



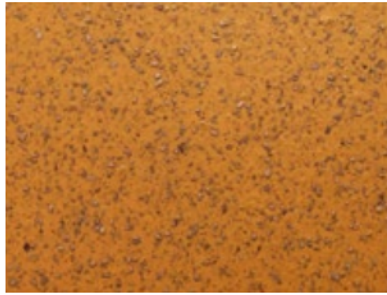
CRK 4023



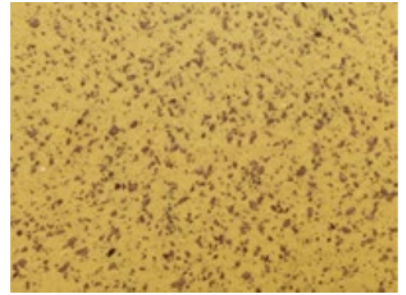
CRK 4017



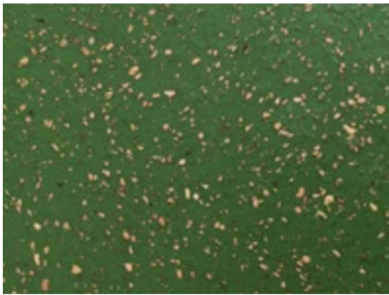
CRK 4013



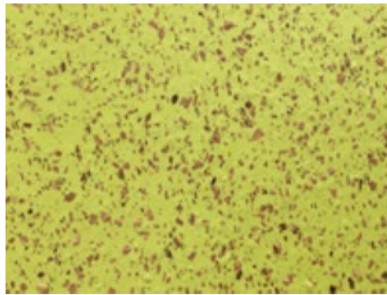
CRK 4006



CRK 4032



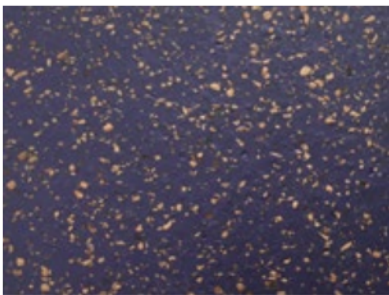
CRK 4028



CRK 4045



CRK 4026



CRK 4018



CRK 4009



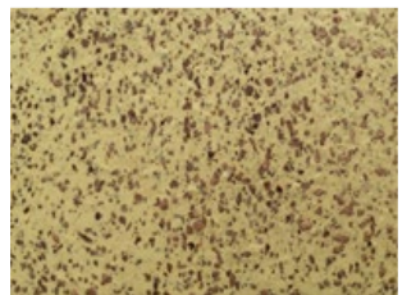
CRK 4011



CRK 4044



CRK 4046



CRK 4021

Suber

Spessore Thickness	UNI EN ISO 24346 (Ex. EN 428)	Valore medio senza retro espanso $\pm 0,15\text{mm}$	2,5 mm
Durezza Hardness	UNI EN ISO 7619-1	$\geq 75$ Shore A	$88 \pm 3$
Resistenza all'abrasione a 5 N di carico Abrasion resistance at 5 N load	ISO 4649 Procedura A Procedure A	$\leq 250 \text{ mm}^3$	$180 \text{ mm}^3$
Impronta residua Residual indentation	UNI EN ISO 24343 (Ex. EN 433)	Valore medio $\leq 0,20\text{mm}$ a spessore $\geq 2,5 \text{ mm}$ Mean value $\leq 0,20 \text{ mm}$ at thickness $\geq 2,5 \text{ mm}$	0,10 mm
Stabilità dimensionale Dimensional stability	UNI EN ISO 23999 (Ex. EN 434)	$\pm 0,4\%$	$\pm 0,25\%$
Flessibilità Flexibility	UNI EN ISO 24344 (Ex. EN 435 Procedura A - Procedure A)	Diametro del mandrino 20 mm nessuna formazione di fessura Mandrel diameter 20 mm - no fissuring	Conforme Fulfilled
Resistenza alla lacerazione Tear strength	ISO 34-1 Procedura A, Metodo B Procedure A, Method B	Valore medio $\geq 20 \text{ N/mm}$ Mean value $\geq 20 \text{ N/mm}$	Conforme Fulfilled
Solidità dei colori alla luce artificiale Color fastness to artificial light	ISO 105-B02 Procedura 3 Procedure 3	Almeno 6 sulla scala del blu: $\geq$ livello 3 sulla scala del grigio (= 350 M/hr) At least level 6 on the blue scale: $\geq$ level 3 on the grey scale (= 350 M/hr)	Conforme Fulfilled
Resistenza alla brace di sigaretta Cigarette-burn resistance	EN 1399 Procedura A - B Procedure A - B	Procedura A (espulso) $\geq$ livello 4 Procedura B (in fiamma) $\geq$ livello 3 Procedura A (stabbed out) level $\geq 4$ Procedura B (burning) level $\geq 3$	Conforme Fulfilled
Tossicità fumi Smoke toxicity	BS 6853 Ann. B.2	$\leq 5 \text{ R}$	Conforme Fulfilled
Classificazione Classification	UNI EN ISO 10874 (Ex. EN 685)	Abitazioni - Negozi - Industrie Residential - Commercial - Industrial	23/32/42
Resistenza alla trasmissione del calore Thermal conductivity	DIN 52 612	-	$0,022 \text{ m}^2 \text{ K/W}$
Reazione alle sostanze chimiche Effect of chemicals	UNI EN ISO 26987 (Ex. EN 423)	-	Dipende dalla concentrazione e dal tempo d'azione Resistant depending on concentration and time of exposure
Fattore di correzione del rumore da calpestio Improvement in footfall sound absorption	UNI EN ISO 10140-3 (Ex. ISO 140 - 3)	-	11 dB
Proprietà elettro-isolante Electrical insulation properties	IEC 60093	-	$> 10^{10} \text{ Ohm}$
Carica elettrostatica da calpestio Electrical propensity when walked upon	EN 1815	-	Antistatico, carica elettrostatica in caso di suole in gomma $\leq 2\text{KV}$ Antistatic - charging in case of rubber soles $\leq 2\text{KV}$
Effetto sedia a rotelle Effect of a castor chair	EN 425	-	Prova di rulli, tipoW, conformi alla norma EN 12529 Suitable if castor wheels, typeW, according to EN 12529 are used
Resistenza allo scivolamento Slip resistance	EN 13 893 DIN 51130	$\geq 0,30 \text{ DS}$ BRG 181	DS R10
Classe antincendio Reaction to fire	EN 13 501 - 1	-	Bfl - s1 Appoggato o incollato Not bonded or Bonded

I DATI TECNICI POSSONO ESSERE SOGGETTI A MODIFICHE SENZA PREAVVISO  
TECHNICAL DATA ARE SUBJECT TO CHANGE WITHOUT NOTICE

EN 12 199 Pavimenti di gomma con rilievo omogenei ed eterogenei  
EN 12 199 Specification for homogeneous and heterogeneous profiled rubber floor coverings  
EN 1817 Pavimenti di gomma lisci omogenei ed eterogenei  
EN 1817 Specification for homogeneous and heterogeneous smooth rubber floor coverings

500x500 | 1000x1000mm | 2,5 mm | kg/m<sup>2</sup> 4,00

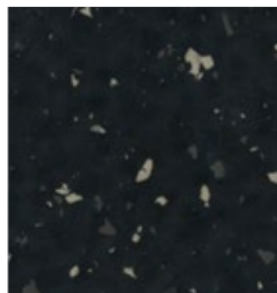


**HAMMER TERRAZZO HAMMER TERRAZZO AUTO & SLATE TERRAZZO**

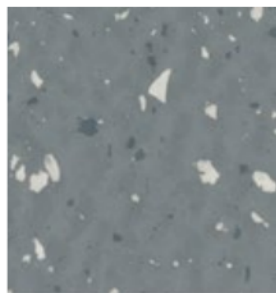


# HAMMER TERRAZZO / HAMMER TERRAZZO AUTO

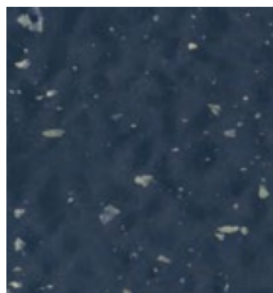
Revêtement en caoutchouc avec surface martelée, multicolore, avec envers ponçonné pour la pose avec adhésif.  
*Multicoloured tiles with hammered surface for very heavy traffic areas.*



S 122



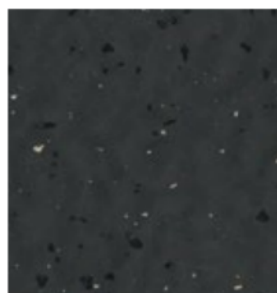
S 110



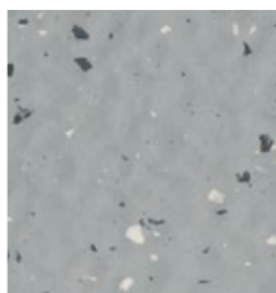
S 125



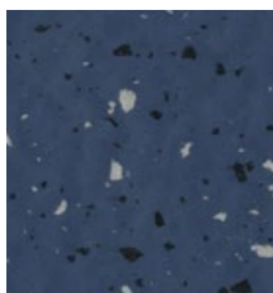
S 124



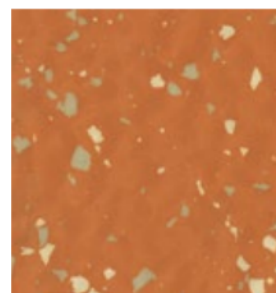
S 32



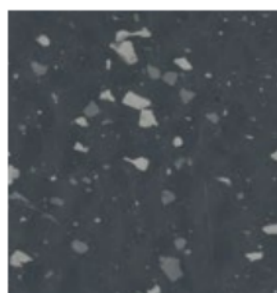
S 13



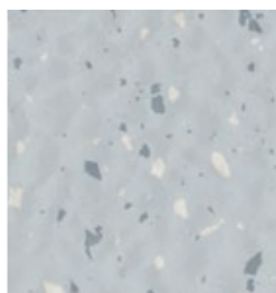
S 12



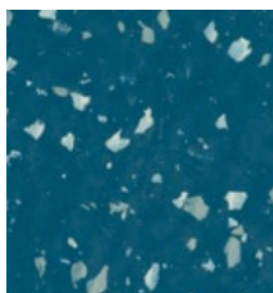
S 118



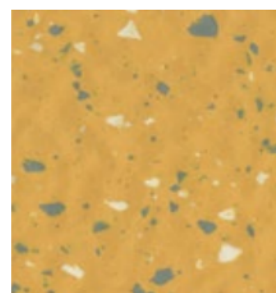
S 119



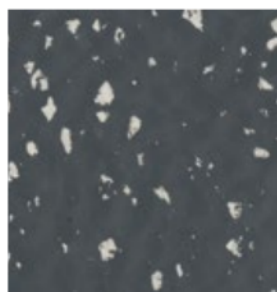
S 107



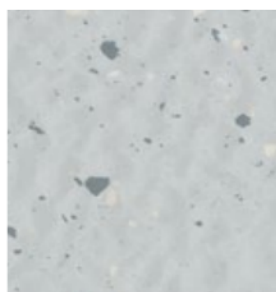
S 121



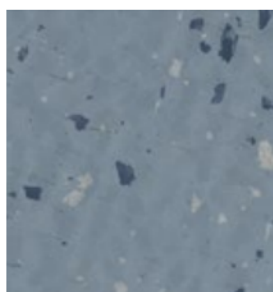
S 112



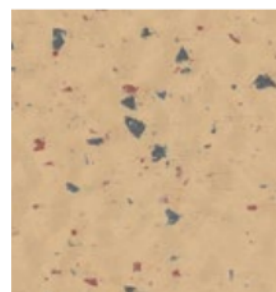
S 14



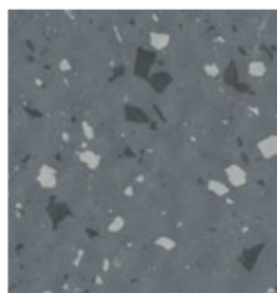
S 104



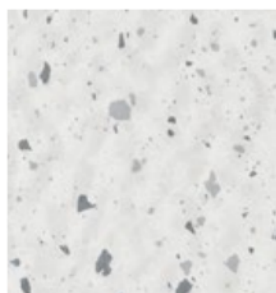
S 108



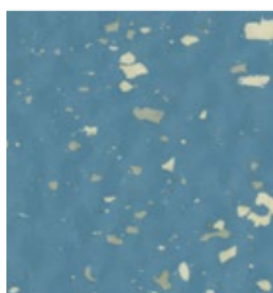
S 17



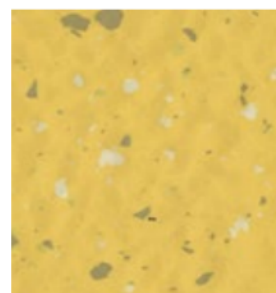
S 113



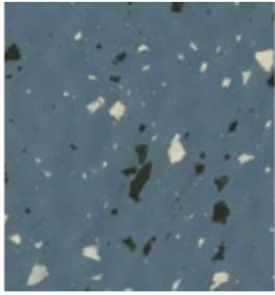
S 101



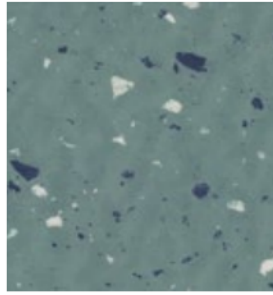
S 115



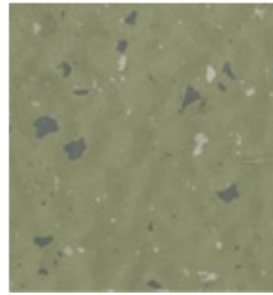
S 106



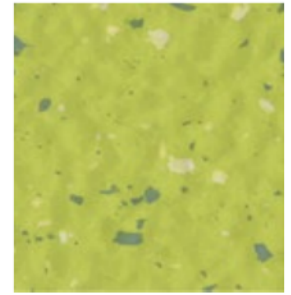
S 20



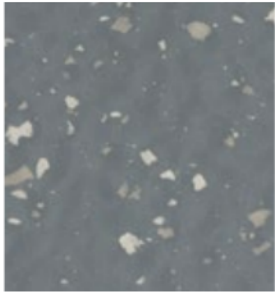
S 11



S 126



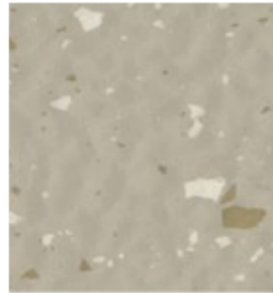
S 103



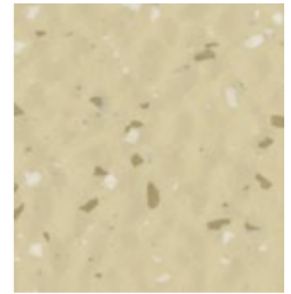
S 116



S 117



S 111

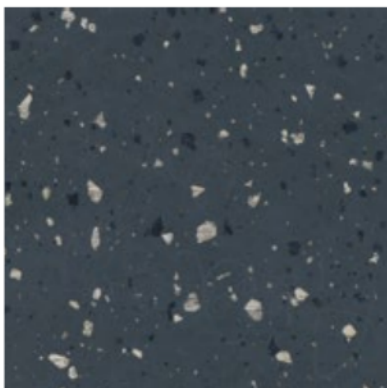


S 105

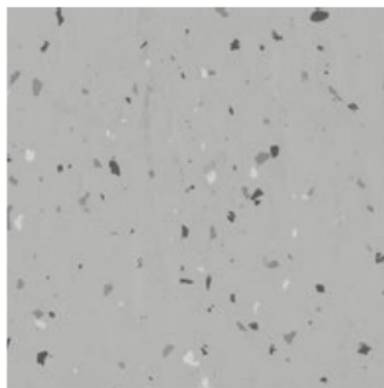
---

## SLATE TERRAZZO

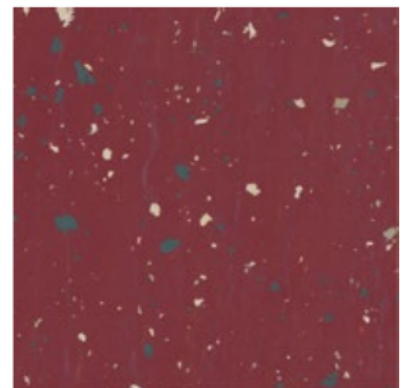
Pavimento in gomma con superficie multicolore con rovescio smerigliato per la posa con adesivo.  
*Multicoloured tiles, slate pattern, for adhesive bonding.*



AD 32



AD 08



AD 75

			Hammer Terrazzo	Slate Terrazzo	Hammerlock Terrazzo
Proprietà secondo EN 14 041/EN 12 199/EN 1817 <i>Properties according to EN 14 041/EN 12 199/EN 1817</i>	Norma di prova <i>Test method</i>	U.m. & Requisiti <i>U.m. &amp; Requirements</i>	Valori medi risultati da collaudi della produzione in corso <i>Average test results from running production</i>		
Spessore <i>Thickness</i>	UNI EN ISO 24346 (Ex. EN 426)	Valore medio senza retro espanso $\pm 0,15$ mm	2,5 mm	3,5 mm	5,0 mm
Durezza <i>Hardness</i>	UNI EN ISO 7619-1	$\geq 75$ Shore A	88 $\pm$ 5		
Resistenza all'abrasione a 5 N di carico <i>Abrasion resistance at 5 N load</i>	ISO 4649 Procedura A <i>Procedure A</i>	$\leq 250$ mm <sup>3</sup>	160 mm <sup>3</sup>		
Impronta residua <i>Residual indentation</i>	UNI EN ISO 24343 (Ex. EN 433)	Valore medio $\leq 0,20$ mm a spessore $\geq 2,5$ mm <i>Mean value <math>\leq 0,20</math> mm at thickness <math>\geq 2,5</math> mm</i>	0,050 mm	0,080 mm	0,150 mm
Stabilità dimensionale <i>Dimensional stability</i>	UNI EN ISO 23999 (Ex. EN 434)	$\pm 0,4\%$	$\pm 0,3\%$		
Flessibilità <i>Flexibility</i>	UNI EN ISO 24344 (Ex. EN 435 Procedura A - Procedure A)	Diámetro del mandrino 20 mm nessuna formazione di fessura <i>Mandrel diameter 20 mm no fissuring</i>	Conforme <i>Fulfilled</i>		
Resistenza alla lacerazione <i>Tear strength</i>	ISO 34-1 Procedura A, Metodo B <i>Procedure A, Method B</i>	Valore medio $\geq 20$ N/mm <i>Mean value <math>\geq 20</math> N/mm</i>	Conforme <i>Fulfilled</i>		-
Solidità dei colori alla luce artificiale <i>Color fastness to artificial light</i>	ISO 105-B02 Procedura 3 <i>Procedure 3</i>	Almeno 6 sulla scala del blu: $\geq$ livello 3 sulla scala del grigio (= 350 M/m <sup>2</sup> ) <i>At least level 6 on the blue scale, <math>\geq</math> level 3 on the grey scale (= 350 M/m<sup>2</sup>)</i>	Conforme <i>Fulfilled</i>		
Resistenza alla brace di sigaretta <i>Cigarette-burn resistance</i>	EN 1399 Procedura A - B <i>Procedure A - B</i>	Procedura A (espulso) $\geq$ livello 4 Procedura B (in fiamme) $\geq$ livello 3 Procedura A (stubbato out) level $\geq 4$ Procedura B (burning) level $\geq 3$	Conforme <i>Fulfilled</i>		
Tossicità fumi <i>Smoke toxicity</i>	BS 6853 Ann. B.2	$\leq 5$ R	Conforme <i>Fulfilled</i>		
Classificazione <i>Classification</i>	UNI EN ISO 10874 (Ex. EN 685)	Abitazioni - Negozi - Industrie <i>Residential - Commercial - Industrial</i>	23/32/42	23/34/43	
Resistenza alla trasmissione del calore <i>Thermal conductivity</i>	DIN 52 612	-	0,022 m <sup>2</sup> K/W		0,03 m <sup>2</sup> K/W
Reazione alle sostanze chimiche <i>Effect of chemicals</i>	UNI EN ISO 26987 (Ex. EN 423)	-	Dipende dalla concentrazione e dal tempo d'azione <i>Resistant depending on concentration and time of exposure</i>		
Fattore di correzione del rumore da calpestio <i>Improvement in footfall sound absorption</i>	UNI EN ISO 10140-3 (Ex. ISO 140 - 8)	-	6 dB	12 dB	16 dB
Proprietà elettro-isolante <i>Electrical insulation properties</i>	IEC 60093	-	$> 10^6$ Ohm		
Carica elettrostatica da calpestio <i>Electrical propensity when walked upon</i>	EN 1815	-	Antistatico, carica elettrostatica in caso di soles in gomma $\leq 2$ KV <i>Antistatic - charging in case of rubber soles <math>\leq 2</math>KV</i>		
Effetto sedia a rotelle <i>Effect of a castor chair</i>	EN 425	-	Prova di rulli, tipo W, conformi alla norma EN 12529 <i>Suitable if castor wheels, type W, according to EN 12529 are used</i>		
Resistenza allo scivolamento <i>Slip resistance</i>	EN 13 893	$\geq 0,30$ DS	DS		
Classe antincendio <i>Reaction to fire</i>	EN 13 501 - 1	-	Bfl - s1 Appoggiato o incollato <i>Not bonded or bonded</i>		Bfl - s1

I DATI TECNICI POSSONO ESSERE SOGGETTI A MODIFICHE SENZA PREAVVISO  
*TECHNICAL DATA ARE SUBJECT TO CHANGE WITHOUT NOTICE*

EN 12 199 Pavimenti di gomma con rilievo omogenei ed eterogenei  
*EN 12 199 Specification for homogeneous and heterogeneous profiled rubber floor coverings*  
EN 1817 Pavimenti di gomma lisci omogenei ed eterogenei  
*EN 1817 Specification for homogeneous and heterogeneous smooth rubber floor coverings*

500x500 | 1000x1000mm  2,5 mm  kg/m<sup>2</sup> 4,00

500x500 | 1000x1000mm  3,5 mm  kg/m<sup>2</sup> 5,50



500x500 | 1000x1000mm  3,5 mm  kg/m<sup>2</sup> 5,40



Disponibile in tutti i colori DOTFLOOR S.  
*Available in all colours of DOTFLOOR S.*

## Hammerlock Terrazzo

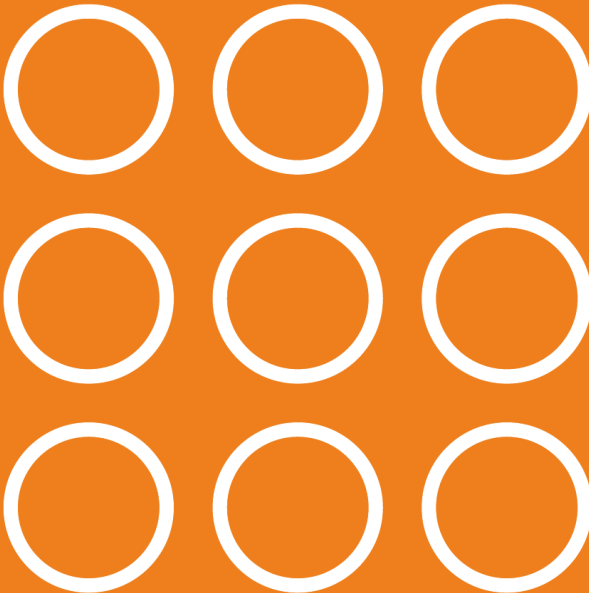
\* Pavimento in gomma autoposante con superficie martellata, multicolore, posa con adesivo removibile.  
*Loose-laying multicolored rubber tiles with hammered surface. Install with suitable peelable adhesive system.*

500x500mm  5,0 mm  kg/m<sup>2</sup> 8,00



Available in all colours of **Hammer Terrazzo**





# HAMMER UNI/ HAMMER UNI AUTO

Pavimento in gomma con superficie martellata, in tinta unita, con rovescio smerigliato per la posa con adesivo.  
*Solid colour tiles with hammered surface for very heavy traffic areas.*



UF 21



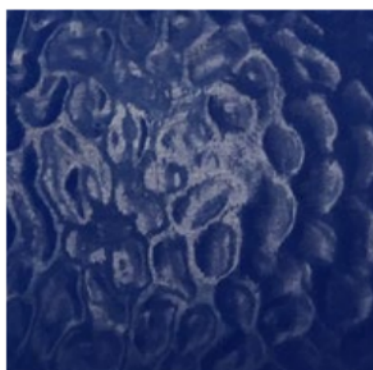
UF 32



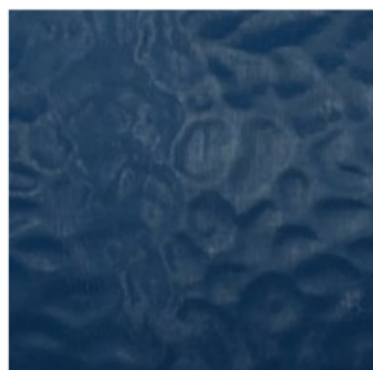
UF 113



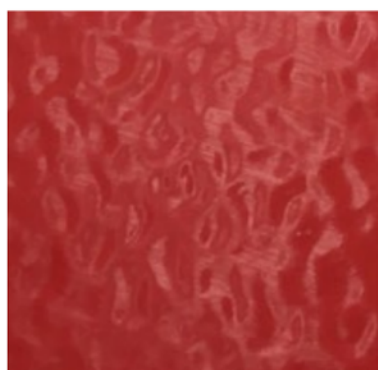
UF 125



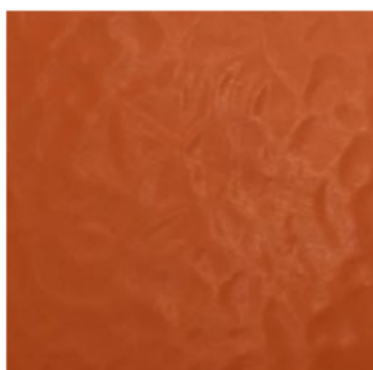
UF 114



UF 121



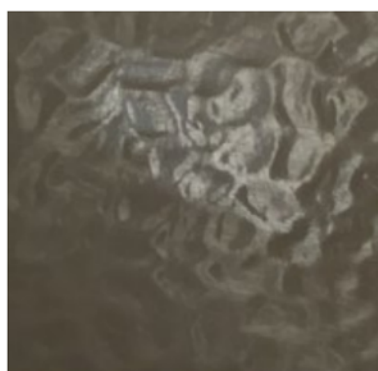
UF 124



UF 118



UF 106



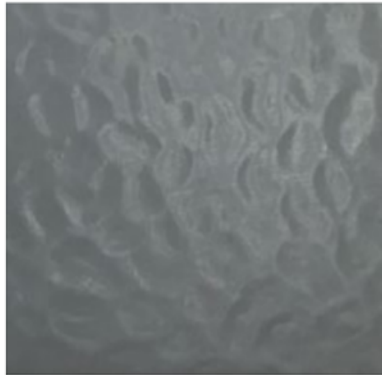
UF 117



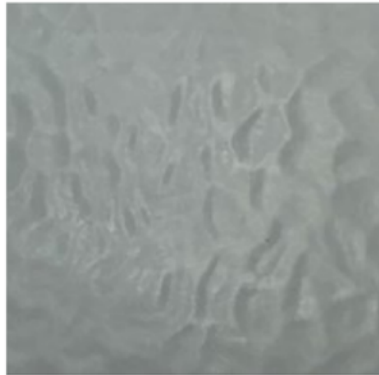
UF 111



UF 105



UF 110



UF 13 N



UF 107



UF 20



UF 115

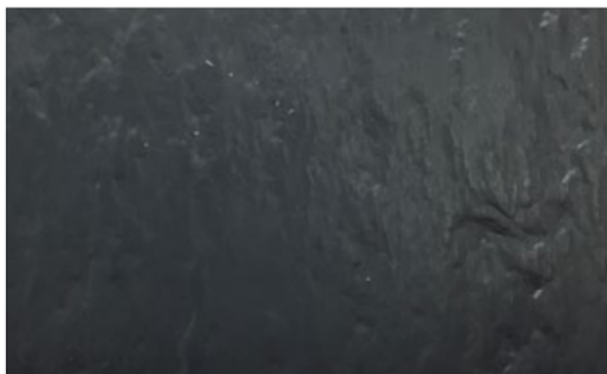


UF 103

---

## SLATE

Pavimento in gomma con rovescio smerigliato per applicazione con adesivo.  
*Roughened reverse for adhesive bonding.*



EG 84



EN 21

Proprietà secondo EN 14 041/EN 12 199/EN 1817 <i>Properties according to EN 14 041/EN 12 199/EN 1817</i>	Norma di prova <i>Test method</i>	U.m. & Requisiti <i>U.m. &amp; Requirements</i>	Hammer UNI	Slate	Hammerlock UNI
			Valori medi risultati da collaudi della produzione in corso <i>Average test results from running production</i>		
Spessore <i>Thickness</i>	UNI EN ISO 24346 (Ex. EN 428)	Valore medio senza retro espanso $\pm 0,15\text{mm}$	2,5 mm	3,5 mm	5,0 mm
Durezza <i>Hardness</i>	UNI EN ISO 7619-1	$\geq 75$ Shore A	88 $\pm$ 3		
Resistenza all'abrasione a 5 N di carico <i>Abrasion resistance at 5 N load</i>	ISO 4649 Procedura A <i>Procedure A</i>	$\leq 250 \text{mm}^3$	160 $\text{mm}^3$		
Impronta residua <i>Residual indentation</i>	UNI EN ISO 24343 (Ex. EN 433)	Valore medio $\leq 0,20\text{mm}$ a spessore $\geq 2,5 \text{mm}$ <i>Mean value <math>\leq 0,20 \text{mm}</math> at thickness <math>\geq 2,5 \text{mm}</math></i>	0,050 mm	0,080 mm	0,150 mm
Stabilità dimensionale <i>Dimensional stability</i>	UNI EN ISO 23999 (Ex. EN 434)	$\pm 0,4\%$	$\pm 0,3\%$		
Flessibilità <i>Flexibility</i>	UNI EN ISO 24344 (Ex. EN 435 Procedura A - Procedure A)	Diametro del mandrino 20 mm nessuna formazione di fessura <i>Mandrel diameter 20 mm no fissuring</i>	Conforme <i>Fulfilled</i>		
Resistenza alla lacerazione <i>Tear strength</i>	ISO 34-1 Procedura A, Metodo B <i>Procedure A, Method B</i>	Valore medio $\geq 20 \text{N/mm}$ <i>Mean value <math>\geq 20 \text{N/mm}</math></i>	Conforme <i>Fulfilled</i>		-
Solidità dei colori alla luce artificiale <i>Color fastness to artificial light</i>	ISO 105-B02 Procedura 3 <i>Procedure 3</i>	Almeno 6 sulla scala del blu: $\geq$ livello 3 sulla scala del grigio (= 350 MJ/m <sup>2</sup> ) <i>At least level 6 on the blue scale: <math>\geq</math> level 3 on the grey scale (= 350 MJ/m<sup>2</sup>)</i>	Conforme <i>Fulfilled</i>		
Resistenza alla brace di sigaretta <i>Cigarette-burn resistance</i>	EN 1399 Procedura A - B <i>Procedure A - B</i>	Procedura A (espulso) $\geq$ livello 4 Procedura B (in fiamme) $\geq$ livello 3 <i>Procedure A (stuffed out) level <math>\geq</math> 4 Procedure B (burning) level <math>\geq</math> 3</i>	Conforme <i>Fulfilled</i>		
Tossicità fumi <i>Smoke toxicity</i>	BS 6853 Ann. B.2	$\leq 5 \text{R}$	Conforme <i>Fulfilled</i>		
Classificazione <i>Classification</i>	UNI EN ISO 10874 (Ex. EN 685)	Abitazioni - Negozi - Industrie <i>Residential - Commercial - Industrial</i>	23/32/42	23/34/43	
Resistenza alla trasmissione del calore <i>Thermal conductivity</i>	DIN 52 612	-	0,022 m <sup>2</sup> K/W		0,03 m <sup>2</sup> K/W
Reazione alle sostanze chimiche <i>Effect of chemicals</i>	UNI EN ISO 26987 (Ex. EN 425)	-	Dipende dalla concentrazione e dal tempo d'azione <i>Resistant depending on concentration and time of exposure</i>		
Fattore di correzione del rumore da calpestio <i>Improvement in footfall sound absorption</i>	UNI EN ISO 10140-3 (Ex. ISO 140 - 8)	-	6 dB	12 dB	16 dB
Proprietà elettro-isolante <i>Electrical insulation properties</i>	IEC 60093	-	$> 10^{10} \text{Ohm}$		
Carica elettrostatica da calpestio <i>Electrical propensity when walked upon</i>	EN 1815	-	Antistatico, carica elettrostatica in caso di soles in gomma $\leq 2\text{KV}$ <i>Antistatic - charging in case of rubber soles <math>\leq 2\text{KV}</math></i>		
Effetto sedia a rotelle <i>Effect of a castor chair</i>	EN 425	-	Prova di rulli, tipoW, conformi alla norma EN 12529 <i>Suitable if castor wheels, typeW, according to EN 12529 are used</i>		
Resistenza allo scivolamento <i>Slip resistance</i>	EN 13 893	$\geq 0,30 \text{DS}$	DS		
Classe antincendio <i>Reaction to fire</i>	EN 13 501 - 1	-	Bfl - s1 Appoggiato o Incollato <i>Not bonded or Bonded</i>		Bfl - s1

I DATI TECNICI POSSONO ESSERE SOGGETTI A MODIFICHE SENZA PREAVVISO  
*TECHNICAL DATA ARE SUBJECT TO CHANGE WITHOUT NOTICE*

EN 12 199 Pavimenti di gomma con rilievo omogenei ed eterogenei  
*EN 12 199 Specification for homogeneous and heterogeneous profiled rubber floor coverings*  
EN 1817 Pavimenti di gomma lisci omogenei ed eterogenei  
*EN 1817 Specification for homogeneous and heterogeneous smooth rubber floor coverings*

 500x500 | 1000x1000mm  2,5 mm  kg/m<sup>2</sup> 4,00

 500x500 | 1000x1000mm  3,5 mm  kg/m<sup>2</sup> 5,50



 500x500 | 1000x1000mm  3,5 mm  kg/m<sup>2</sup> 5,40



## HAMMERLOCK UNI

\* Pavimento in gomma autoposante con superficie martellata, in tinta unita, posa con adesivo removibile.  
*Loose-laying solid colour rubber tiles with hammered surface. Install with suitable peelable adhesive system.*

 500x500  5,0 mm  kg/m<sup>2</sup> 8,00

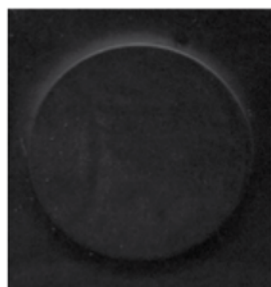


Available in all colours of **Hammer  
UNI**



# ZERO TM BK GT 2.7mm

Pavimento in gomma con rovescio smerigliato per applicazione con adesivo.  
*Roughened reverse for adhesive bonding.*



EN 21 1



EB 65 2



ER 75 4



EM 03 2



EG 84 1



EB 09 3



EA 01 4



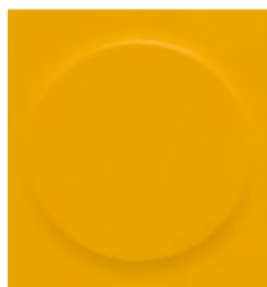
ER 02 2



EG 06 2



EB 15 2



EY 78 4



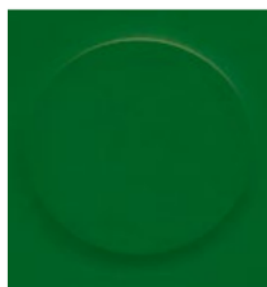
EM 22 2



EG 04 2



EB 51 3



EV 05 2



EG 08 2



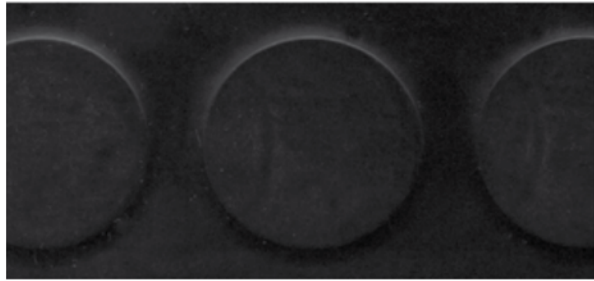
EV 73 3



EV 18 4

# ZERO TP BK GT 4mm

Pavimento in gomma con rovescio smerigliato per applicazione con adesivo.  
*Roughened reverse for adhesive bonding.*



EN 21 1



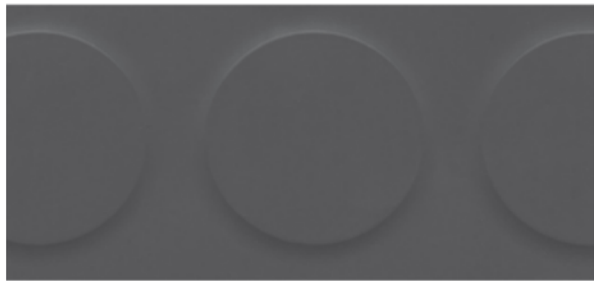
EB 15 2



EG 84 2



EV 05 2



EG 06 2



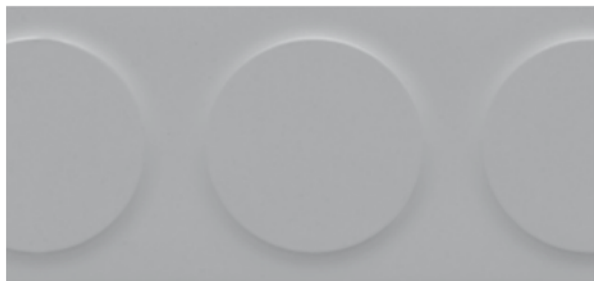
ER 75 4



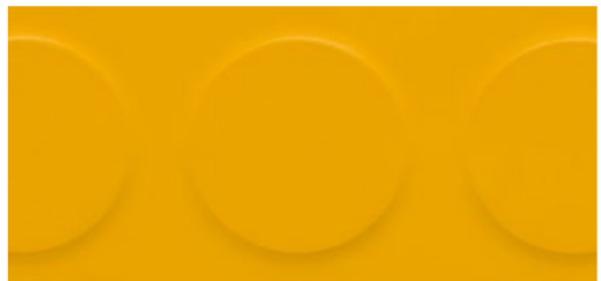
EG 04 2



EA 01 4



EG 08 2



EY 78 4

			ZERO TM BK GT 2.7mm	ZERO TP BK GT 4mm
Proprietà secondo EN 14 041/EN 12 199 Properties according to EN 14 041/EN 12 199	Norma di prova Test method	U.m. & Requisiti U.m. & Requirements	Valori medi risultati da collaudi della produzione in corso Average test results from running production	
Spessore Thickness	UNI EN ISO 24346 (Ex EN 428)	Valore medio $\pm 0,20$ mm del valore nominale EN 12 199	2,7 mm	4,0 mm
Durezza Hardness	UNI EN ISO 7619-1	$\geq 75$ Shore A	88 $\pm 3$	
Resistenza all'abrasione a 5 N di carico Abrasion resistance at 5 N load	ISO 4649 Procedura A Procedure A	$\leq 250$ mm <sup>3</sup>	170 mm <sup>3</sup>	
Impronta residua Residual indentation	UNI EN ISO 24343 (Ex EN 433)	Valore medio $\leq 0,20$ mm a spessore $\leq 3,0$ mm Valore medio $\leq 0,25$ mm a spessore $\geq 3,0$ mm	0,08 mm	0,12 mm
Stabilità dimensionale Dimensional stability	UNI EN ISO 23999 (Ex EN 434)	$\pm 0,4\%$	$\pm 0,3\%$	
Flessibilità Flexibility	UNI EN ISO 24344 (Ex EN 435 Procedura A - Procedure A)	Diametro del mandrino 20 mm nessuna formazione di fessura. Mandrel diameter 20 mm no fissuring	Conforme Fulfilled	
Resistenza alla lacerazione Tear strength	ISO 34-1 Procedura A, Metodo B Procedure A, Method B	Valore medio $\geq 20$ N/mm Mean value $\geq 20$ N/mm	Conforme Fulfilled	
Solidità dei colori alla luce artificiale Colour fastness to artificial light	ISO 105-B02 Procedura 3 Procedure 3	Almeno 6 sulla scala del blu: $\geq$ livello 3 sulla scala del grigio (= 350 Mx/m <sup>2</sup> ) At least level 6 on the blue scale: $\geq$ level 3 on the grey scale (= 350 Mx/m <sup>2</sup> )	Conforme Fulfilled	
Resistenza alla brace di sigaretta Cigarette-burn resistance	EN 1399 Procedura A - B Procedure A - B	Procedura A (espulso) $\geq$ livello 4 Procedura B (in fiamme) $\geq$ livello 3 Procedura A (strubbed out) level $\geq 4$ Procedure B (burning) level $\geq 3$	Conforme Fulfilled	
Tossicità fumi Smoke toxicity	BS 6853 Ann. B.2	$\leq 5$ R	Conforme Fulfilled	
Classificazione Classification	UNI EN ISO 10874 (Ex EN 685)	Abitazioni - Negozi - Industrie Residential - Commercial - Industrial	23/32/41	23/34/43
Resistenza alla trasmissione del calore Thermal conductivity	DIN 52 612	-	0,015 m <sup>2</sup> K/W	0,020 m <sup>2</sup> K/W
Reazione alle sostanze chimiche Effect of chemicals	UNI EN ISO 26987 (Ex EN 423)	-	Dipende dalla concentrazione e dal tempo d'azione Resistant depending on concentration and time of exposure	
Fattore di correzione del rumore da calpestio Improvement in footfall sound absorption	UNI EN ISO 10140-3 (Ex ISO 140 - 8)	-	8 dB	10 dB
Proprietà elettro-isolante Electrical insulation properties	IEC 60093	-	$> 10^{10}$ Ohm	
Carica elettrostatica da calpestio Electrical propensity when walked upon	EN 1815	-	Antistatico, carica elettrostatica in caso di soles in gomma $\leq 2$ KV Antistatic - charging in case of rubber soles $\leq 2$ KV	
Effetto sedia a rotelle Effect of a castor chair	EN 425	-	Prova di rulli, tipoW, conformi alla norma EN 12529 Suitable if castor wheels, typeW, according to EN 12529 are used	
Resistenza allo scivolamento Slip resistance	EN 13 893	$\geq 0,30$ DS	DS	
Classe antincendio Reaction to fire	EN 13 501 - 1	-	Bfl - s1 Appoggiato o incollato Not bonded or bonded	

I DATI TECNICI POSSONO ESSERE SOGGETTI A MODIFICHE SENZA PREAVVISO  
TECHNICAL DATA ARE SUBJECT TO CHANGE WITHOUT NOTICE

EN 12 199 Pavimenti di gomma con rilievo omogenei ed eterogenei  
EN 12 199 Specification for homogeneous and heterogeneous profiled rubber floor coverings

 1000x1000 mm   $\phi 27$  mm   $\begin{matrix} 0,5 \text{ mm} \\ 2,2 \text{ mm} \end{matrix}$  2,7 mm  kg/m<sup>2</sup> 3,90

TM-BK 2,7 mm (all colours on stock)

I numeri in grassetto indicano la categoria di prezzo.  
The numbers in bold type indicate the price category.

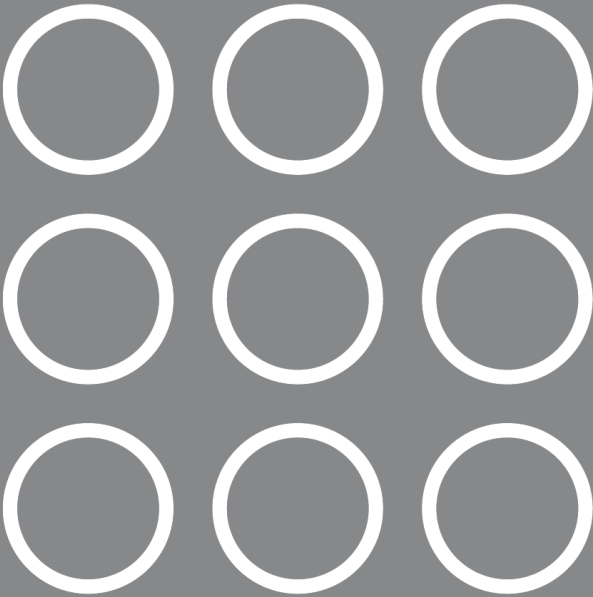


 1000x1000 mm   $\phi 27$  mm   $\begin{matrix} 0,5 \text{ mm} \\ 2,2 \text{ mm} \end{matrix}$  4,0 mm  kg/m<sup>2</sup> 5,20

TP-BK 4,0 mm (standard colours)

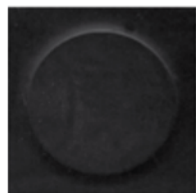






# SPECIAL PATTERNS

Piastrelle monocolori con rilievi.  
*Solid colour studded tiles.*



**BMS**

610x610 mm |  $\phi$  29 mm | 0,4 mm / 2,1 mm | 2,5 mm | kg/m<sup>2</sup> 3,70

CE  
EN 14041



Colori  
Black



**BA**

1000x1000 mm |  $\phi$  20 mm | 2,0 mm / 2,0 mm | 4,0 mm | kg/m<sup>2</sup> 5,40

1000x1000 mm |  $\phi$  20 mm | 2,0 mm / 4,0 mm | 6,0 mm | kg/m<sup>2</sup> 8,10

CE  
EN 14041



Colori  
EN 21



**MINI PASTILLE**

Piastrelle con superficie a mini bolli.  
*Rubberfloor in tiles with small studded surface.*

1000x1000 mm |  $\phi$  4 mini | 0,4 mm / 2,6 mm | 3,0 mm | kg/m<sup>2</sup> 4,00

CE  
EN 14041



Colori  
EN 21



**R**

1000x1000 mm | 15 mm | 2,0 mm / 3,0 mm | 5,0 mm | kg/m<sup>2</sup> 6,50

CE  
EN 14041



Colori  
EN 21



# AC

Piastrelle monocolori con rilievi a bolli. Per posa con attacco cemento.  
*Solid colour round studded tiles. Cement bonding laying.*



BA

1000x1000 mm |  $\phi$  20 mm |  $\frac{2,0 \text{ mm}}{8,0 \text{ mm}}$  | 10,0 mm | kg/m<sup>2</sup> 9,50

CE  
EN 14041



Colori standard  
EN 21



BP

1000x1000 mm |  $\phi$  26,5 mm |  $\frac{1,5 \text{ mm}}{8,0 \text{ mm}}$  | 9,5 mm | kg/m<sup>2</sup> 8,30

CE  
EN 14041



Colori standard  
EN 21



RD

1000x1000 mm | 15 mm |  $\frac{2,0 \text{ mm}}{8,0 \text{ mm}}$  | 10,0 mm | kg/m<sup>2</sup> 9,10

CE  
EN 14041

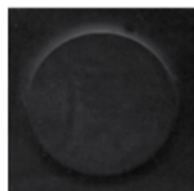


Colori standard  
EN 21



# RRF

Usi industriali e trasporti.  
*Industrial uses for Transport.*



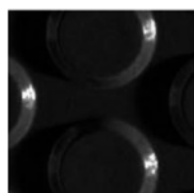
## RRF - BB

Pavimento in rotoli con superficie a rilievo con bollo basso.  
*Low stud flooring in rolls for heavy traffic.*

1,0x10 m |  $\varnothing$  24 mm | 0,6 mm / 2,1 mm | 2,7 mm | kg/m<sup>2</sup> 3,80



Colori standard  
EN 21 EG 06 EG 04



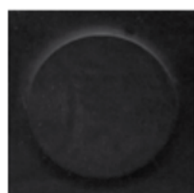
## RRF - BAS

Pavimento in rotoli con superficie a rilievo con bollo alto.  
*High stud flooring in rolls for heavy traffic.*

1,20x10 m |  $\varnothing$  14 mm | 2,0 mm / 2,0 mm | 4,0 mm | kg/m<sup>2</sup> 4,80



Colori standard  
EN 21 EG 06



## RRF - BMN

Pavimento in rotoli con superficie a rilievo con bollo basso.  
*Low stud flooring in rolls for heavy traffic.*

1,45x15 m |  $\varnothing$  28 mm | 0,5 mm / 2,5 mm | 3,0 mm | kg/m<sup>2</sup> 4,00



Colori standard  
Black Grey





### RRF - LISCIO

Pavimento in rotoli con superficie liscia in tinta unita per traffico intenso.  
*Rubberfloor in rolls with smooth surface.*

1,25x15 m | 3,0 mm | kg/m<sup>2</sup> 5,10



Colori standard  
Black Grey



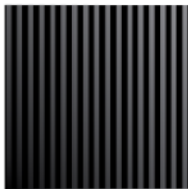
### RRF - 100 RIGHE

Pavimento in rotoli con superficie rigata fine per aree a traffico intenso.  
*Rubberfloor in rolls with ribbed surface.*

1,25x15 m | 1,6 mm | 1,6 mm | 2,0 mm | 1,0 mm | 3,0 mm | kg/m<sup>2</sup> 4,10



Colori standard  
Black Grey



### RRF - 1000 RIGHE

Pavimento in rotoli con superficie rigata molto fine per aree a traffico intenso.  
*Rubberfloor in rolls with fine ribbed surface.*

1,25x15 m | 3,0 mm | kg/m<sup>2</sup> 4,00



Colori standard  
Black Grey





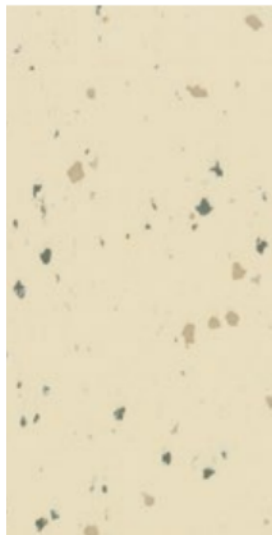




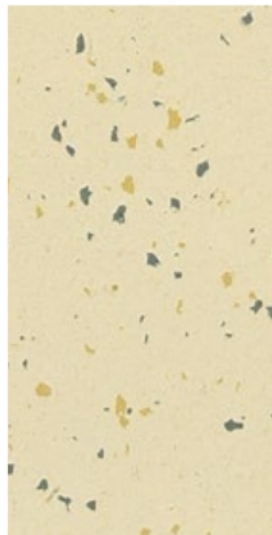




# SMOOTH TERRAZZO NRP/ NSELN GT/ VHP



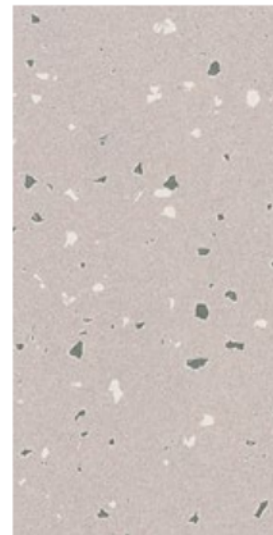
DOT 13 (ESD) (20dB)



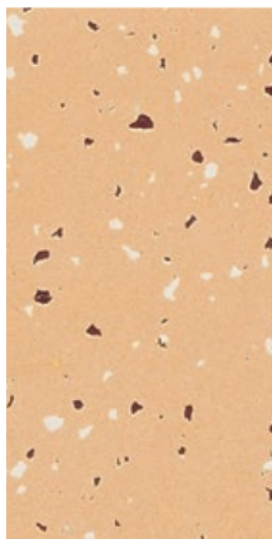
DOT 22



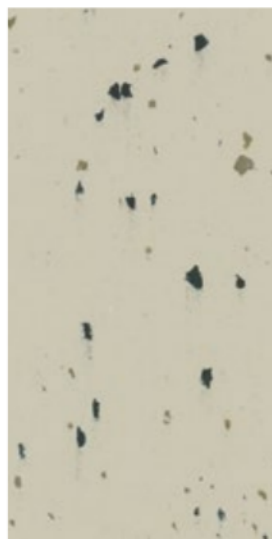
DOT 15



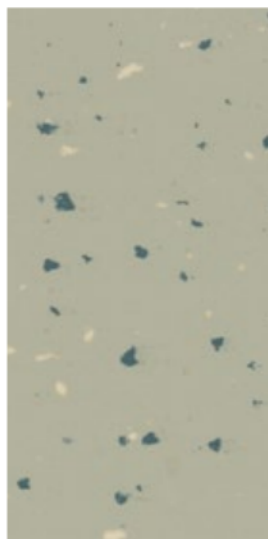
DOT 43



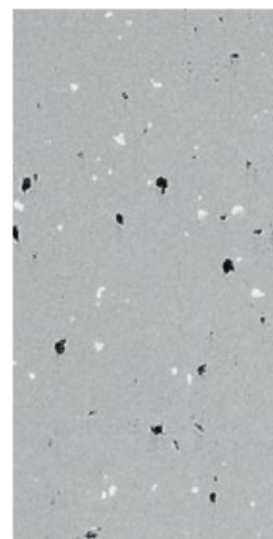
DOT 9



DOT 14



DOT 16 (ESD) (20dB)



DOT 44 (ESD)

## Smooth Terrazzo N RP

Superficie liscia con finissimi granuli multicolori.

Smooth surface with multicoloured granules.

Surface lisse avec de très fins granules multicolores incorporés.

Superficie lisa con pequeñas partículas multicolores.

Classificazione/Classification/Classificación/Clasificación UPEC  $U_4P_3E_2C_1$

Pavimento sigillabile a caldo con cordolo.

Flooring can be sealed using the cordolo hot sealing rod.

Revêtement soudable avec un cordon de soudure.

Piso herméticos con borde de calor.

## Smooth Terrazzo N SELN GT (ESD) DOT 29 | DOT 44 | DOT 13 | DOT 16 Standard colours.

Pavimento dissipativo (ESD). Superficie gofrata con finissimi granuli multicolori.

Dissipative flooring (ESD). Embossed surface with multicoloured granules.

Revêtement de los dissipateur (ESD). Surface gaufrée avec de très fins granules multicolores incorporés.

Pavimento dissipativo (ESD). Superficie gofrada con pequeñas partículas multicolores.

## Smooth Terrazzo VHP (20dB) DOT 29 | DOT 13 | DOT 16 Standard colours.

Superficie liscia con finissimi granuli multicolori e sottostrato speciale per la riduzione del rumore da calpestio (20 dB).

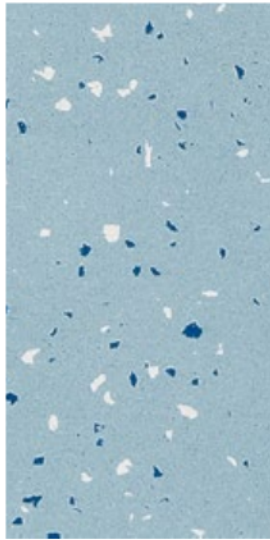
Smooth surface with multicoloured granules and special under layer for reduction of noise due to treading (20 dB).

Surface lisse avec de très fins granules multicolores incorporés et souscouche spéciale pour la réduction du bruit par piétinement (20 dB).

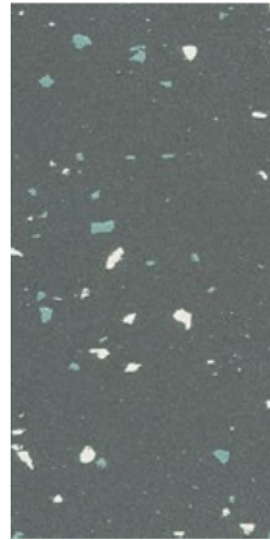
Superficie lisa con pequeñas partículas multicolores y sustrato especial para la reducción del ruido a la pisada (20 dB).



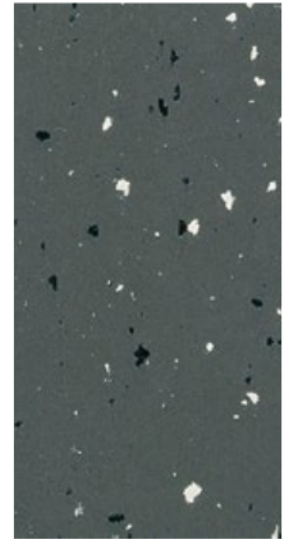
DOT 47



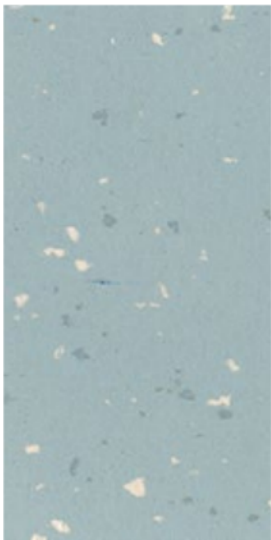
DOT 45



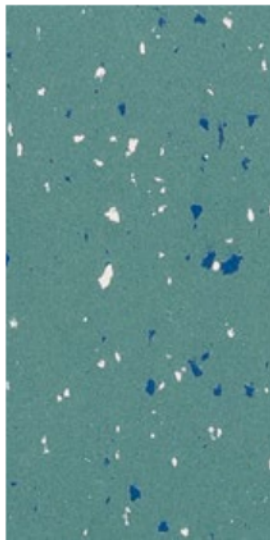
DOT 28



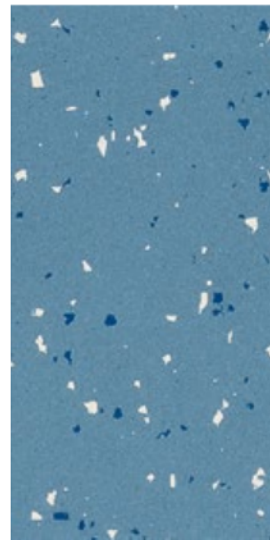
DOT 29 ESD 20dB



DOT 37



DOT 26



DOT 40



DOT 42

610x610mm | 2,0 mm kg/m<sup>2</sup> 3,30

1,90x14 m | 2,0 mm kg/m<sup>2</sup> 3,30

CE  
EN 14041



610x610mm | 2,0 mm kg/m<sup>2</sup> 3,30

1,90x10 m | 2,0 mm kg/m<sup>2</sup> 3,30

CE  
EN 14041



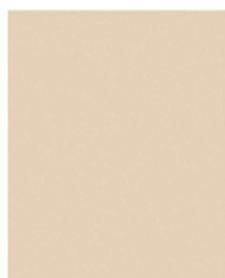
1,90x10 m | 4,0 mm kg/m<sup>2</sup> 4,40

CE  
EN 14041



# SMOOTH UNI RP

Pavimento in gomma con superficie liscia, in tinta unita, rovescio smerigliato per la posa con adesivo.  
 Smooth surface in solid colours with roughened underside for adhesive bonding.



UR 1



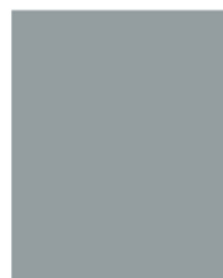
UR 27



UR 28



UR 14



UR 3



UR 10



UR 4



UR 29



UR 6



UR 18



UR 24



UR 21



UR 15



UR 13



UR 17

## UR RP:

Pavimento sigillabile a caldo con cordolo.

Flooring can be sealed using the cordolo hot sealing rod.

Revêtement soudable avec un cordon de soudure.

Piso herméticos con borde de calor.

Classificazione/Classification/Classification/Clasificación UPECE  $U_4P_3E_2C_1$

610x610mm | 2,0 mm | kg/m<sup>2</sup> 3,20

1,90x10 m | 2,0 mm | kg/m<sup>2</sup> 3,20

610x610mm | 3,0 mm | kg/m<sup>2</sup> 5,20

1,90x10 m | 3,0 mm | kg/m<sup>2</sup> 5,20

CE  
EN 14041



EN 685



23



34



43

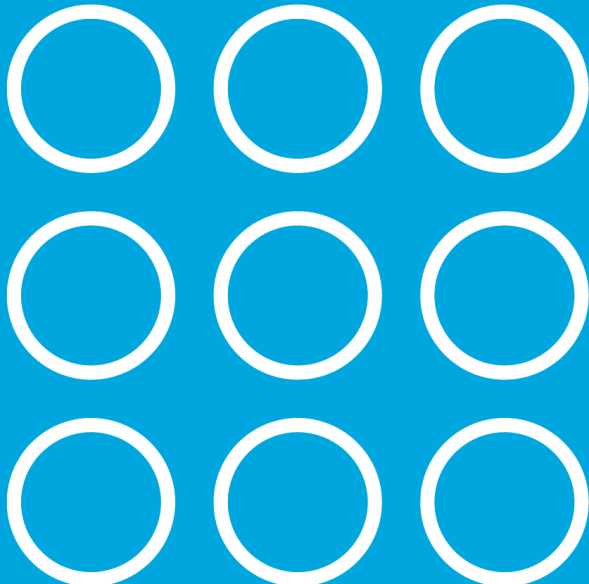


			Smooth Terrazzo N RP	Smooth Terrazzo N SELN GT	Smooth Terrazzo N VHP	Smooth UNI RP
Proprietà secondo EN 1817/EN 12 199/EN 1816 <i>Properties according to EN 1817/EN 12 199/EN 1816</i>	Norma di prova <i>Test method</i>	U.m. & Requisiti <i>U.m. &amp; Requirements</i>	Valori medi risultanti da collaudi della produzione in corso <i>Average test results from running production</i>			
Spessore <i>Thickness</i>	UNI EN ISO 24346 (Ex. EN 428)	Con e senza retro espanso $\pm 0,15$ mm max 0,2 mm dal nominale	2,0 mm	4,0 mm	2,0 mm	3,0 mm
Durezza <i>Hardness</i>	UNI EN ISO 7619-1	$\geq 75$ Shore A	88 $\pm$ 5	88 $\pm$ 3	85 $\pm$ 5	
Resistenza all'abrasione a 5 N di carico <i>Abrasion resistance at 5 N load</i>	ISO 4649 Procedura A <i>Procedure A</i>	$\leq 250$ mm <sup>3</sup>	150 mm <sup>3</sup>	150 mm <sup>3</sup>	160 mm <sup>3</sup>	165 mm <sup>3</sup>
Impronta residua <i>Residual indentation</i>	UNI EN ISO 24343 (Ex. EN 433)	Valore medio < 0,15mm a spessore < 2,5mm Acoustic: Valore medio < 0,25mm	0,05 mm	-	0,08 mm	0,08 mm
Stabilità dimensionale <i>Dimensional stability</i>	UNI EN ISO 23999 (Ex. EN 434)	$\pm 0,4\%$	$\pm 0,3\%$			
Flessibilità <i>Flexibility</i>	UNI EN ISO 24344 (Ex. EN 435 Procedura A - Procedure A)	Diámetro del mandrino 20 mm nessuna formazione di fessura <i>Mandrel diameter 20 mm no fissuring</i>	Conforme <i>Fulfilled</i>			
Resistenza alla brace di sigaretta <i>Cigarette-burn resistance</i>	EN 1399 Procedura A - B <i>Procedure A - B</i>	Procedura A [espulso] $\geq$ livello 4 Procedura B [in fiamme] $\geq$ livello 3 Procedura A [stubbed out] level $\geq$ 4 Procedura B [burning] level $\geq$ 3	Conforme <i>Fulfilled</i>			
Solidità dei colori alla luce artificiale <i>Cologr fastness to artificial light</i>	ISO 105-B02 Procedura 3 <i>Procedure 3</i>	Almeno 6 sulla scala del blu; $\geq$ livello 3 sulla scala del grigio (= 350 MJ/m <sup>2</sup> ) <i>At least level 6 on the blue scale; <math>\geq</math> level 3 on the grey scale (= 350 MJ/m<sup>2</sup>)</i>	Conforme <i>Fulfilled</i>			
Tossicità fumi <i>Smoke toxicity</i>	BS 6853 Ann. B.2	$\leq 5$ R	Conforme <i>Fulfilled</i>		-	Conforme <i>Fulfilled</i>
Classificazione <i>Classification</i>	UNI EN ISO 10874 (Ex. EN 685)	Abitazioni - Negozi - Industrie <i>Residential - Commercial - Industrial</i>	23/34/42	23/33	23/34/42	23/34/43
Resistenza alla trasmissione del calore <i>Thermal conductivity</i>	DIN 52 612	-	0,012 m <sup>2</sup> K/W	-	0,012 m <sup>2</sup> K/W	0,020 m <sup>2</sup> K/W
Resistenza allo scivolamento su rampa <i>Ramp slip resistance</i>	DIN 51 130	Conferma a BGR 181 <i>According BGR 181</i>	$\geq 6$ (R9)	$\geq 6$ (R9)	-	$\geq 6$ (R9)
Reazione alle sostanze chimiche <i>Effect of chemicals</i>	UNI EN ISO 26987 (Ex. EN 423)	-	Dipende dalla concentrazione e dal tempo d'azione <i>Resistant depending on concentration and time of exposure</i>			
Fattore di correzione del rumore da calpestio <i>Improvement in footfall sound absorption</i>	UNI EN ISO 10140-3 (Ex. ISO 140 - 8)	-	6 dB	20 dB	6 dB	9 dB
Proprietà elettro-isolante <i>Electrical insulation properties</i>	IEC 60093	-	$> 10^{10}$ Ohm		-	$> 10^{10}$ Ohm
Carica elettrostatica da calpestio <i>Electrical propensity when walked upon</i>	EN 1815	-	Antistatico, carica elettrostatica in caso di suole in gomma $\leq 2$ KV <i>Antistatic - charging in case of rubber soles <math>\leq 2</math> KV</i>		-	$\leq 2$ KV
Carica elettrostatica da calpestio <i>Electrical propensity when walked upon</i>	AATCC 134	-	-	-	0,2 K/V	-
Effetto sedia a rotelle <i>Effect of a castor chair</i>	EN 425	-	Prova di rulli, tipo W, conformi alla norma EN 12 529 <i>Suitable if castor wheels, type W, according to EN 12 529 are used</i>			
Resistenza di attraversamento <i>Volume resistance</i>	IEC 61340 - 4 - 1	$1 \times 10^6 - 1 \times 10^9$ (DIF - Dissipativo/Dissipative)	-	-	DIF - class 1 Rv ( $10^6 - 10^9$ )	-
Resistenza d'isolamento <i>Isolating resistance</i>	VDE 0 100	-	-	-	$\geq 5 \times 10^4$ Ohm	-
Comportamento elettrico <i>Electrical behaviour</i>	EN 1081	Rv $\leq 10^9$ Statico Dissipativo <i>Static Dissipative</i>	-	-	$\leq 10^9$ Ohm	-
Resistenza allo scivolamento <i>Slip resistance</i>	EN 13 893	$\geq 0,30$ DS	DS			
Classe antincendio <i>Reaction to fire</i>	EN 13 501 - 1	-	Bfl - s	Cfl - s1	Bfl - s	

I DATI TECNICI POSSONO ESSERE SOGGETTI A MODIFICHE SENZA PREAVVISO  
TECHNICAL DATA ARE SUBJECT TO CHANGE WITHOUT NOTICE

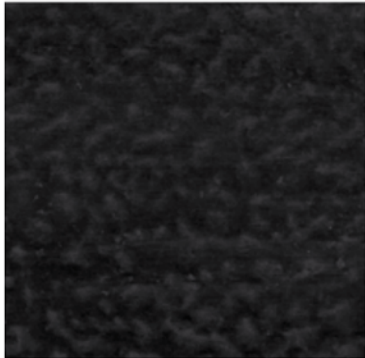
EN 1817 Pavimenti di gomma lisci omogenei ed eterogenei  
EN 1817 Specification for homogeneous and heterogeneous smooth rubber floor coverings  
EN 1816 Pavimenti di gomma lisci omogenei ed eterogenei con supporto di schiuma  
EN 1816 Specification for homogeneous and heterogeneous smooth rubber floor coverings with foam backing





# HAMMERLOCK UNI

Lastre in gomma autoposanti ad incastro con superficie martellata tinta unita.  
Loose-laying interlocking solid colour rubber tiles with hammered surface.



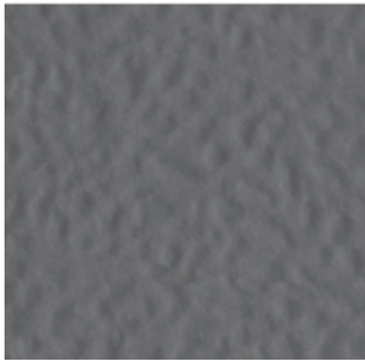
EN 21



ER 75



EB 09



EG 06



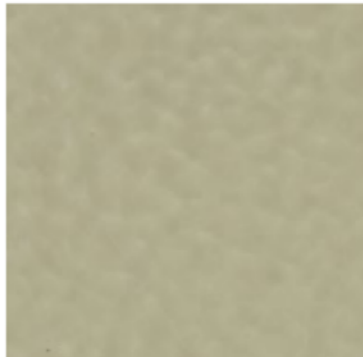
EY 78



EB 51



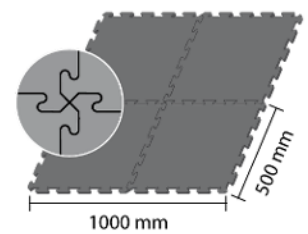
EG 04



EM 22



EV 44



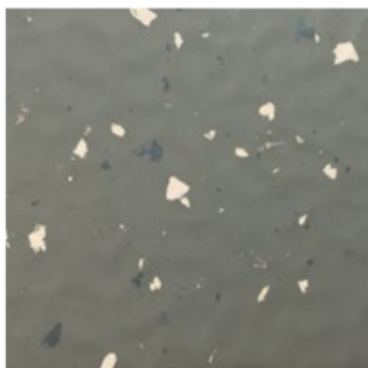


# HAMMERLOCK TERRAZZO

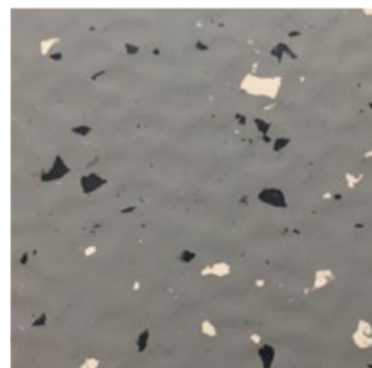
Lastre in gomma autoposanti ad incastro con superficie martellata, multicolore.  
Loose-laying interlocking rubber tiles with hammered multicoloured surface for heavy traffic.



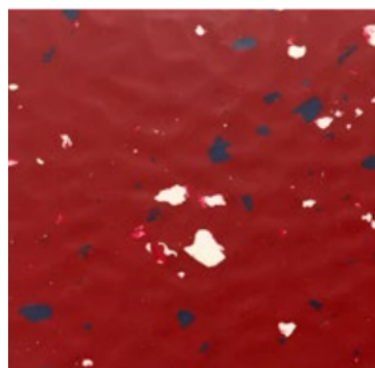
ID 32



ID 110



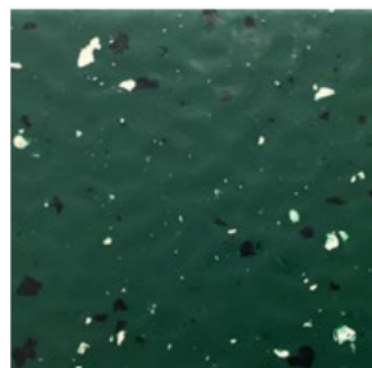
ID 13



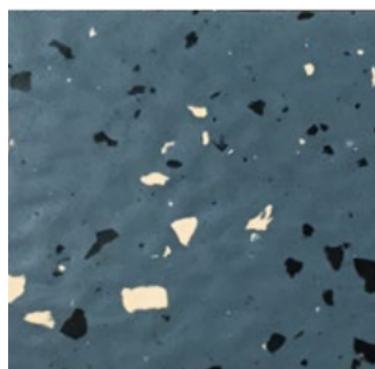
ID 30



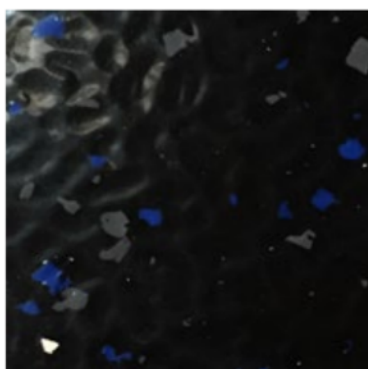
ID 103



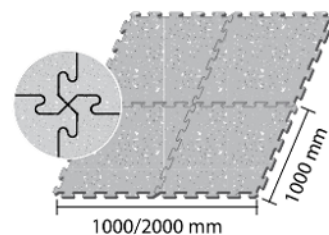
ID 144



ID 20



ID 21



Proprietà secondo EN 1817/EN 14 041 <i>Properties according to EN 1817/EN 14 041</i>	Norma di prova <i>Test method</i>	U.m. & Requisiti <i>U.m. &amp; Requirements</i>	HAMMERLOCK	HAMMERLOCK
			Uni	Terrazzo
			Valori medi risultati da collaudi della produzione in corso <i>Average test results from running production</i>	
Spessore <i>Thickness</i>	UNI EN ISO 24346 (Ex. EN 428)	Valore medio $\pm 0,20$ mm valore nominale EN 12 199	5,0 mm	8,0 mm
Durezza <i>Hardness</i>	UNI EN ISO 7619-1	$\geq 70$ Shore A	88 $\pm$ 3	
Resistenza all'abrasione a 5 N di carico <i>Abrasion resistance at 5 N load</i>	ISO 4649 Procedura A <i>Procedure A</i>	$\leq 250$ mm <sup>3</sup>	160 mm <sup>3</sup>	
Impronta residua <i>Residual indentation</i>	UNI EN ISO 24343 (Ex. EN 433)	Valore medio $\leq 0,20$ mm a spessore $\leq 3,0$ mm Mean value $\leq 0,20$ mm at thickness $\leq 3,0$ mm	0,15 mm	0,20 mm
Stabilità dimensionale <i>Dimensional stability</i>	UNI EN ISO 23999 (Ex. EN 434)	$\pm 0,4\%$	$\pm 0,3\%$	
Flessibilità <i>Flexibility</i>	UNI EN ISO 24344 (Ex. EN 435 Procedura A - Procedure A)	Diámetro del mandrino 20 mm nessuna formazione di fessura <i>Mandrel diameter 20 mm no fissuring</i>	Conforme <i>Fulfilled</i>	
Resistenza alla brace di sigaretta <i>Cigarette-burn resistance</i>	EN 1399 Procedura A - B <i>Procedure A - B</i>	Procedura A [espulso] $\geq$ livello 4 Procedura B [in fiamme] $\geq$ livello 3 Procedura A [stuffed out] level $\geq 4$ Procedura B [burning] level $\geq 3$	Conforme <i>Fulfilled</i>	
Solidità dei colori alla luce artificiale <i>Color fastness to artificial light</i>	ISO 105-B02 Procedura 3 <i>Procedure 3</i>	Almeno 6 sulla scala del blu; $\geq$ livello 3 sulla scala del grigio (= 350 MJ/m <sup>2</sup> ) At least level 6 on the blue scale; $\geq$ level 3 on the grey scale (= 350 MJ/m <sup>2</sup> )	Conforme <i>Fulfilled</i>	
Tossicità fumi <i>Smoke toxicity</i>	BS 6853 Ann. B.2	$\leq 5$ R	Conforme <i>Fulfilled</i>	
Resistenza alla trasmissione del calore <i>Thermal conductivity</i>	DIN 52 612	-	0,03 m <sup>2</sup> K/W	
Resistenza allo scivolamento su rampa <i>Ramp slip resistance</i>	DIN 51 130	Conferma a BGR 181 <i>According BGR 181</i>	$\geq 6$ (R9)	
Reazione alle sostanze chimiche <i>Effect of chemicals</i>	UNI EN ISO 26987 (Ex. EN 423)	-	Dipende dalla concentrazione e dal tempo d'azione <i>Resistant depending on concentration and time of exposure</i>	
Fattore di correzione del rumore da calpestio <i>Improvement in footfall sound absorption</i>	UNI EN ISO 10140-3 (Ex. ISO 140 - B)	-	16 dB	20 dB
Proprietà elettro-isolante <i>Electrical insulation properties</i>	IEC 60093, VDE 0303 T.30	-	$> 10^{10}$ Ohm	
Carica elettrostatica da calpestio <i>Electrical propensity when walked upon</i>	EN 1815	-	Antistatico, carica elettrostatica in caso di suole in gomma $\leq 2$ KV <i>Antistatic - charging in case of rubber soles <math>\leq 2</math> KV</i>	
Effetto sedia a rotelle <i>Effect of a castor chair</i>	EN 425	-	Prova di rulli, tipo W, conformi alla norma EN 12 529 <i>Suitable if castor wheels, type W, according to EN 12 529 are used</i>	
Resistenza allo scivolamento <i>Slip resistance</i>	EN 13 893	$\geq 0,30$ DS	DS	
Classe antincendio <i>Reaction to fire</i>	EN 13 501 - 1	-	Bfl - s1	
Resistenza alla lacerazione <i>Tear strenght</i>	ISO 34-1 procedura B, metodo A <i>procedure B, method A</i>	Valore medio $\geq 20$ N/mm <i>Mean value <math>\geq 20</math> N/mm</i>	-	

I DATI TECNICI POSSONO ESSERE SOGGETTI A MODIFICHE SENZA PREAVVISO  
TECHNICAL DATA ARE SUBJECT TO CHANGE WITHOUT NOTICE

EN 1817 Pavimenti di gomma lisci omogenei ed eterogenei  
EN 1817 Specification for homogeneous and heterogeneous smooth rubber floor coverings

500x500mm | 5,0 mm | kg/m<sup>2</sup> 8,00



1000x1000mm | 5,0 mm | kg/m<sup>2</sup> 8,00

1000x1000mm | 8,0 mm | kg/m<sup>2</sup> 12,40

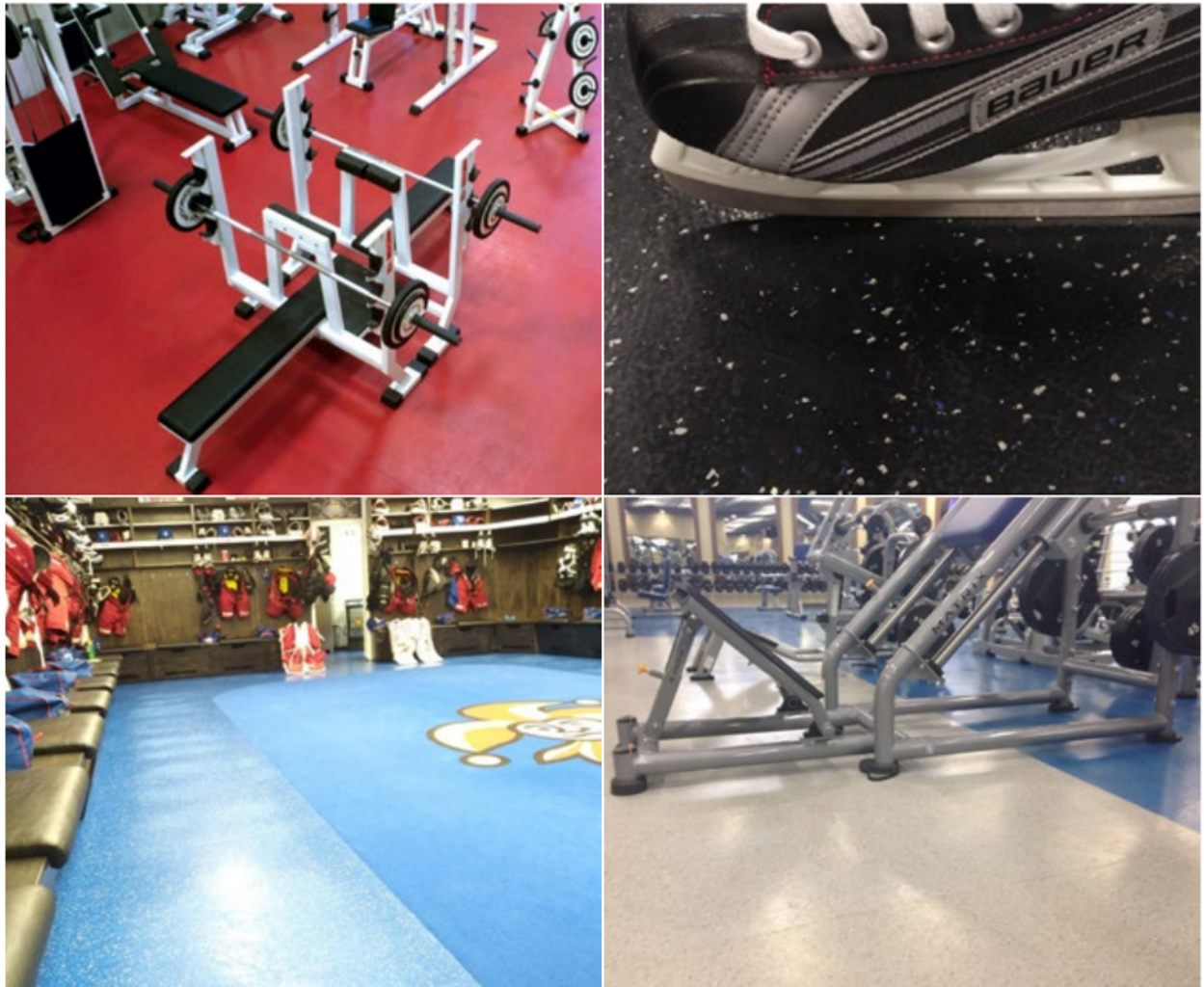






# DOTFLOOR HE

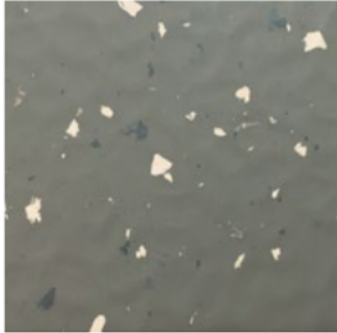
Lastre in gomma con superficie martellata, multicolore.  
Rubber tiles with hammered multicoloured surface for heavy traffic.



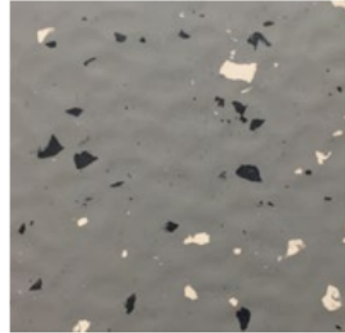
Sportway HE, with hammered surface and chips design, is a flooring exclusively designed for high stress areas. So it is particularly recommended for skating-rink perimeters, body-building and weightlifting halls, changing rooms and high-impact areas. This floor covering is composed by a top layer extremely resistant to wear and tear and by a special underlayment designed specifically for these applications. The top wear layer ensures a high resistance to the blades of ice skates while having an excellent slipping resistance. During the manufacturing process the floor is treated by an appropriate procedure to UV rays. The treatment with UV rays makes the surface more dense and compact: it acts to effectively repel dirt and makes the surface highly resistant to impurities. This generates big savings and also helps protect the environment.



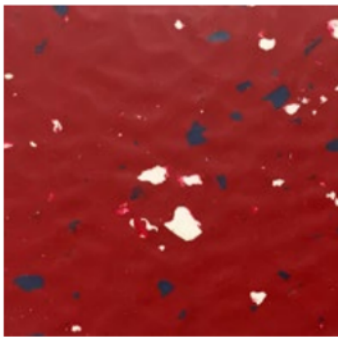
HE 32



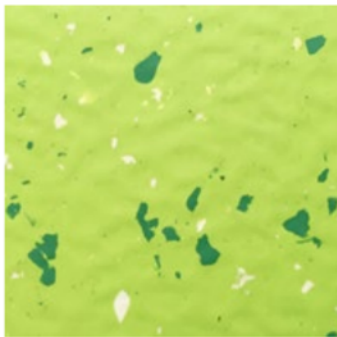
HE 110



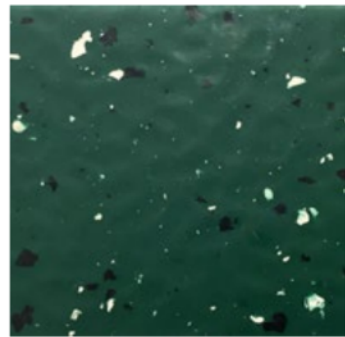
HE 13



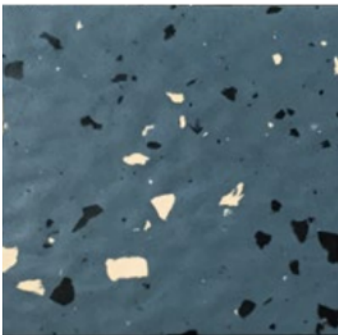
HE 30



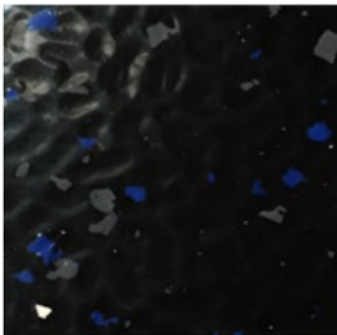
HE 103



HE 144



HE 20



HE 21

Proprietà secondo EN 1817/EN 14 041 <i>Properties according to EN 1817/EN 14 041</i>	Norma di prova <i>Test method</i>	U.m. & Requisiti <i>U.m. &amp; Requirements</i>	Sportway HE	
			Valori medi risultati da collaudi della produzione in corso <i>Average test results from running production</i>	
Spessore <i>Thickness</i>	UNI EN ISO 24346 (Ex. EN 428)	Valore medio ± 0,20 mm valore nominale EN 12 199	6,0 mm	9,0 mm
Durezza <i>Hardness</i>	UNI EN ISO 7619-1	≥ 75 Shore A	> 75 Shore A	
Resistenza all'abrasione a 5 N di carico <i>Abrasion resistance at 5 N load</i>	ISO 4649 Procedura A <i>Procedure A</i>	≤ 250 mm <sup>3</sup>	90 mm <sup>3</sup>	
Impronta residua <i>Residual indentation</i>	UNI EN ISO 24343 (Ex. EN 433)	Valore medio ≤ 0,20mm a spessore ≤ 3,0mm Mean value ≤ 0,20mm at thickness ≤ 3,0mm	0,13 mm	0,15 mm
Stabilità dimensionale <i>Dimensional stability</i>	UNI EN ISO 23999 (Ex. EN 434)	± 0,4%	± 0,3%	
Flessibilità <i>Flexibility</i>	UNI EN ISO 24344 (Ex. EN 435 Procedura A - Procedure A)	Diámetro del mandrino 20 mm nessuna formazione di fessura Mandrel diameter 20 mm no fissuring	Conforme <i>Fulfilled</i>	
Resistenza alla brace di sigaretta <i>Cigarette-burn resistance</i>	EN 1399 Procedura A - B <i>Procedure A - B</i>	Procedura A [espulso] ≥ livello 4 Procedura B [in fiamme] ≥ livello 3 Procedura A [stabbed out] level ≥ 4 Procedura B [burning] level ≥ 3	Conforme <i>Fulfilled</i>	
Solidità dei colori alla luce artificiale <i>Color fastness to artificial light</i>	ISO 105-802 Procedura 3 <i>Procedure 3</i>	Almeno 6 sulla scala del blu; ≥ livello 3 sulla scala del grigio (= 300 MJ/m <sup>2</sup> ) At least level 6 on the blue scale; ≥ level 3 on the grey scale (= 350 MJ/m <sup>2</sup> )	Scala del grigio ≥ livello 3 in conformità alla norma EN 20 105-A02 <i>Grey scale ≥ level 3 according to EN 20 105-A02</i>	
Tossicità fumi <i>Smoke toxicity</i>	BS 6853 Ann. B.2	≤ 5 R	-	
Classificazione <i>Classification</i>	UNI EN ISO 10874 (Ex. EN 685)	Abitazioni - Negozi - Industrie <i>Residential - Commercial - Industrial</i>	23/34/43	
Resistenza alla trasmissione del calore <i>Thermal conductivity</i>	DIN 52 612	-	0,20 m <sup>2</sup> K/W	0,21 m <sup>2</sup> K/W
Resistenza allo scivolamento su rampa <i>Ramp slip resistance</i>	DIN 51 130	Conferma a BGR 181 <i>According BGR 181</i>	R 9	
Reazione alle sostanze chimiche <i>Effect of chemicals</i>	UNI EN ISO 26987 (Ex. EN 423)	-	Dipende dalla concentrazione e dal tempo d'azione <i>Resistant depending on concentration and time of exposure</i>	
Fattore di correzione del rumore da calpestio <i>Improvement in footfall sound absorption</i>	UNI EN ISO 10140-3 (Ex. ISO 140 - 8)	-	13 dB	15 dB
Proprietà elettro-isolante <i>Electical insulation properties</i>	IEC 60093, VDE 0303 T.30	-	> 10 <sup>10</sup> Ohm	
Carica elettrostatica da calpestio <i>Electrical propensity when walked upon</i>	EN 1815	-	Antistatico, carica elettrostatica in caso di soles in gomma ≤ 2 KV <i>Antistatic - charging in case of rubber soles ≤ 2 KV</i>	
Effetto sedia a rotelle <i>Effect of a castor chair</i>	EN 425	-	Prova di rulli, tipo W, conformi alla norma EN 12 529 <i>Suitable if castor wheels, type W, according to EN 12 529 are used</i>	
Resistenza allo scivolamento <i>Slip resistance</i>	EN 13 893	≥ 0,30 DS	Conforme <i>Fulfilled</i>	
Classe antincendio <i>Reaction to fire</i>	EN 13 501 - 1	-	Cfl - s1 (non incollato - not bonded)	
Resistenza alla lacerazione <i>Tear strenght</i>	ISO 34-1 procedura B, metodo A <i>procedure B, method A</i>	Valore medio ≥ 20N/mm <i>Mean value ≥ 20 N/mm</i>	36 N/mm	40 N/mm

I DATI TECNICI POSSONO ESSERE SOGGETTI A MODIFICHE SENZA PREAVVISO  
TECHNICAL DATA ARE SUBJECT TO CHANGE WITHOUT NOTICE

EN 1817 Pavimenti di gomma lisci omogenei ed eterogenei  
EN 1817 Specification for homogeneous and heterogeneous smooth rubber floor coverings

Pavimento in gomma ad altissima resistenza all'abrasione. Raccomandato per golf club, palazzi del ghiaccio, ecc.  
*Indoor rubber flooring with high abrasion resistance. Recommended for golf clubs, ice arenas, etc.*

1000x1000mm | 6,0 mm | kg/m<sup>2</sup> 9,30  
1000x1000mm | 9,0 mm | kg/m<sup>2</sup> 14,00



Jaymart Rubber & Plastics Ltd

Roman Way

Crusader Park

Warminster

Wiltshire

BA12 8SP

Tel 01985 218994

[www.jaymart.co.uk](http://www.jaymart.co.uk)

email [sale@jaymart.co.uk](mailto:sale@jaymart.co.uk)

