



A NATURAL FEELING

Technical Information

B 2.0

Solid Hardwood Flooring
Product Information
Junckers 22 mm Board
Residential / Commercial / Sport

Boards

Oak, Ash, Ash Nordic, Maple and Beech (incl. SylvaKet, SylvaRed & SylvaColor): Each board is assembled from two rows of staves by a glued double dovetail construction and is either coated on the back side of the board with a UV hardening lacquer or provided with a polypropylene moisture balancer on the back side.

Stave Lengths:
623.5 and 467.0 mm.

Merbau

Each board is assembled from two rows of finger-joined staves which are glued together.

Stave Lengths Merbau:
308.0, 408.0 and 474.0 mm.

Each board is tongued and grooved on all four sides.

Nominal Board Dimensions:

Thickness: 21.8 mm (±0.2 mm)
Width: 129.0 mm (±0.2 mm)
Length: 3700 / 1830 / 900 mm (±1.0 mm)
Merbau: 1830mm (±1.0 mm)

Drying Method, staves:

Maple and Beech (incl. SylvaKet, SylvaRed & SylvaColor) are press dried. Oak, Ash & Merbau are kiln dried.

Moisture Content:

All boards are supplied with an average moisture content of 8 % (±2 %), except Merbau which are supplied with 10 % (±2 %).

Precision Engineering:

Landing Deviation: 0.2 mm. (0.3 mm in localised areas). Board ends are right angled at ±0.3 mm.

Fig. 1

Product Range, 22 mm

	Grades	Surface	Features
Beech			
SylvaKet	Classic	Lacquered	Shipsdecking Bevelled
SylvaRed	Harmony	Oiled	Squash (Beech)
Ash	Variation	Untreated	Brushed (Oak)
Oak			Bevelled/brushed (Oak)
Maple	Classic Variation	Lacquered Oiled Untreated	Shipsdecking Bevelled Squash
Merbau	Classic	Lacquered Oiled	Shipsdecking
Ash Nordic	Harmony	Pigmented/ lacquered	Shipsdecking
SylvaColor - Umbra		Pigmented/ lacquered	Shipsdecking

Technical Properties

Resistance to Indentation		
	Oak	34 N/mm ² (3.4 Hardness Brinell)
	Ash/Ash Nordic	34 N/mm ² (3.4 Hardness Brinell)
	Maple	34 N/mm ² (3.4 Hardness Brinell)
	Beech	36 N/mm ² (3.6 Hardness Brinell)
	Merbau	41 N/mm ² (4.1 Hardness Brinell)

(prEN 1534, June 1994) and (prEN 175.333.09)

Resistance to Abrasion	
	Factory lacquered: Wt = 0.0015 mm (prEN 175.333.08)

Slip Resistance (preliminary)		
	Factory lacquered:	0.4 (Merbau: 0.3)
	Factory oiled:	0.4 (DIN 18032/2)

Fire Classification

<i>Austria</i>	Factory oiled: Normalbrennbar (Önorm B 3810 B 2)
<i>Netherlands</i>	Factory lacquered: Class T1 (NEN 1775:1991)
<i>Scandinavia</i>	Factory lacquered: Class G on combustible subfloor (NT FIRE 007)
<i>Italy</i>	Factory oiled: Class 1 (Beech, Classic) Factory lacquered: Class 1 (Beech, Classic) (CSE RF 2/75/A - CSE RF 3/77)
<i>Spain</i>	Factory oiled and lacquered Beech, SylvaKet and Oak (UNE 23-727-90)
<i>Germany</i>	Factory oiled and lacquered Beech, SylvaKet and SylvaRed (DIN 4102-B1 acc. to DIN 4102-14)

Thermal Conduction

Transmission coefficient:	Approx.	0.17 W/mK
---------------------------	---------	-----------

Heat Resistance

Approx.	0.13 m ² K/W
---------	-------------------------

Light Reflection

(Reflectance for diffuse light)

Lacquered Beech Classic:	48%
Lacquered SylvaKet Classic:	22%

Electrostatic Charging (kV)	25% RH	50% RH	65% RH
Beech factory lacquered:	3.5	2.0	1.0
Beech factory oiled:	1.0	-	-

Oiled Beech is suitable for use in rooms with computers.
(DIN 54345/1-prEN 1815)

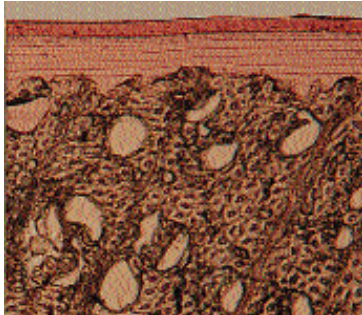


Fig. 2 - Factory Lacquered Surface

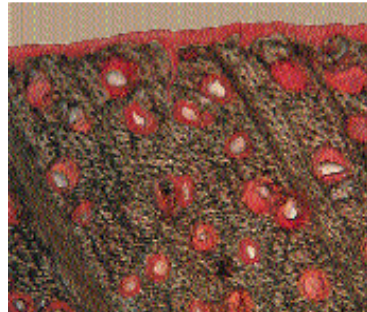


Fig. 3 - Factory Oiled Surface

Factory Surface Treatment

Lacquered

Beech, SylvaKet, SylvaRed, Oak, Ash & Maple

Priming: Several coats of UV-light curing primer.
Top finish: Two-component polyurethane lacquer, silk matt or ultra matt.
Total film thickness: Min. 40 µ.

Merbau

Priming: Several coats of UV-light curing primer.
Top finish: Several coats of UV-light curing lacquer, silk matt.
Total film thickness: Min. 40 µ.

Ash Nordic

Priming: Whitetone lacquer system.
Intermediate treatment: Several coats of UV-light curing lacquer.
Top finish: Two-component polyurethane lacquer, ultra matt.
Total film thickness: Min. 40 µ.

SylvaColor Umbra

Priming: Water based stain with high colour intensity.
Intermediate treatment: Several coats of UV-light curing lacquer.
Top finish: Two-component polyurethane lacquer, silk matt.
Total film thickness: Min. 40 µ.

Oiled

Priming: Surface saturation using oxidative drying urethane oil.
Top finish: Oxidative drying urethane oil.
Total oil consumption: Addition to a full surface saturation.

Untreated

Final sanding to grit 150.

Squash

Final sanding to grit 40.

Packing

Bundle	Length	m ²
8 boards	3700 mm	3.82
4 boards	3700 mm	1.91
8 boards	1830 mm	1.89

Wrapped in polythene. One layer in bundles of 1830 mm length may consist of two boards of 900 mm.

Weight kg/m²

Beech (incl. SylvaKet, SylvaRed & SylvaColor)	16.2
Oak	15.7
Ash/Ash Nordic	15.2
Maple	15.5
Merbau	18.5