



High level stability:
Guiding hinge Kamat

Technik für Möbel


Hettich

For kitchen design that rises to new heights:
Guiding hinge Kamat



Trend in the kitchen: the refrigerator and storage compartment above it are concealed behind an uninterrupted, extra high furniture front. For spacious looking, purist kitchen design.



However, these extra high fronts create the problem of the top part of the door not having any stability when it is opened. The springless Kamat guiding hinge was developed to permit stable reveal alignment.

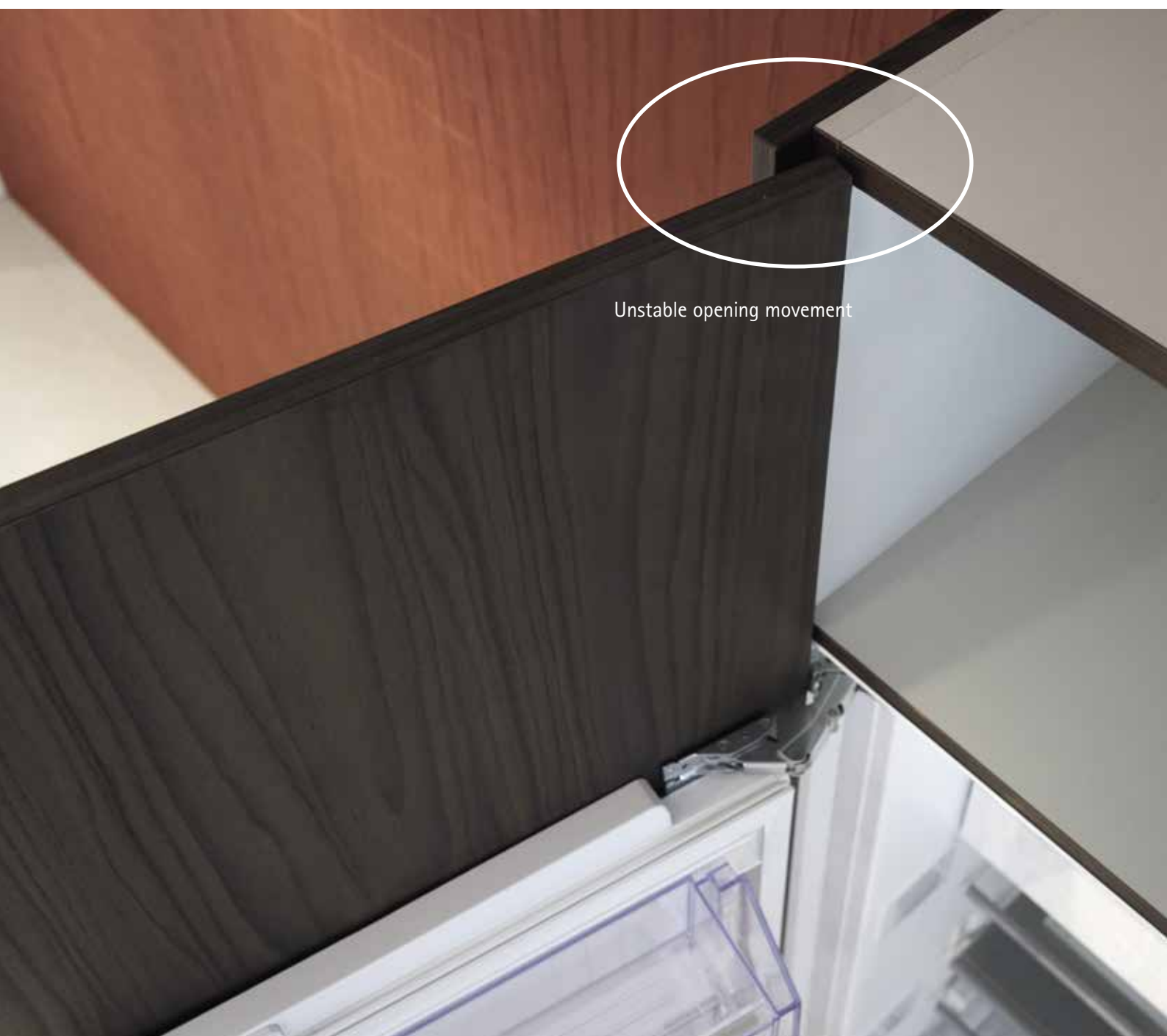


The Kamat can only be used in combination with the Hettich K hinge. In the majority of cases, Hettich K hinges are used in refrigerators with a fixed door. In comparison to doors mounted on a door slider system, no additional furniture hinges are needed.

For kitchen design that rises to new heights: **Guiding hinge Kamat**

The shortcoming:

The top part of the door is not connected to the cabinet body. As a result, the opening movement is not sufficiently stable and reveal alignment not accurate.



Benefit:
Kamat guiding hinge



The answer:
Kamat, the springless guiding hinge from Hettich. It ensures stable, precision reveal alignment at all times. Developed with leading expertise in refrigerator hinges.



The cover cap in white or grey complements Kamat's design.

The key selling points: **Guiding hinge Kamat**

At the moment, the Kamat has a USP. There is no comparable product on the market

- ▶ Permits differentiation into the high price segment from consistently tall furniture doors on refrigerators with fixed door connection
- ▶ Underscores minimalist, consistent furniture design with few reveals



High level stability: **Kamat guiding hinge**

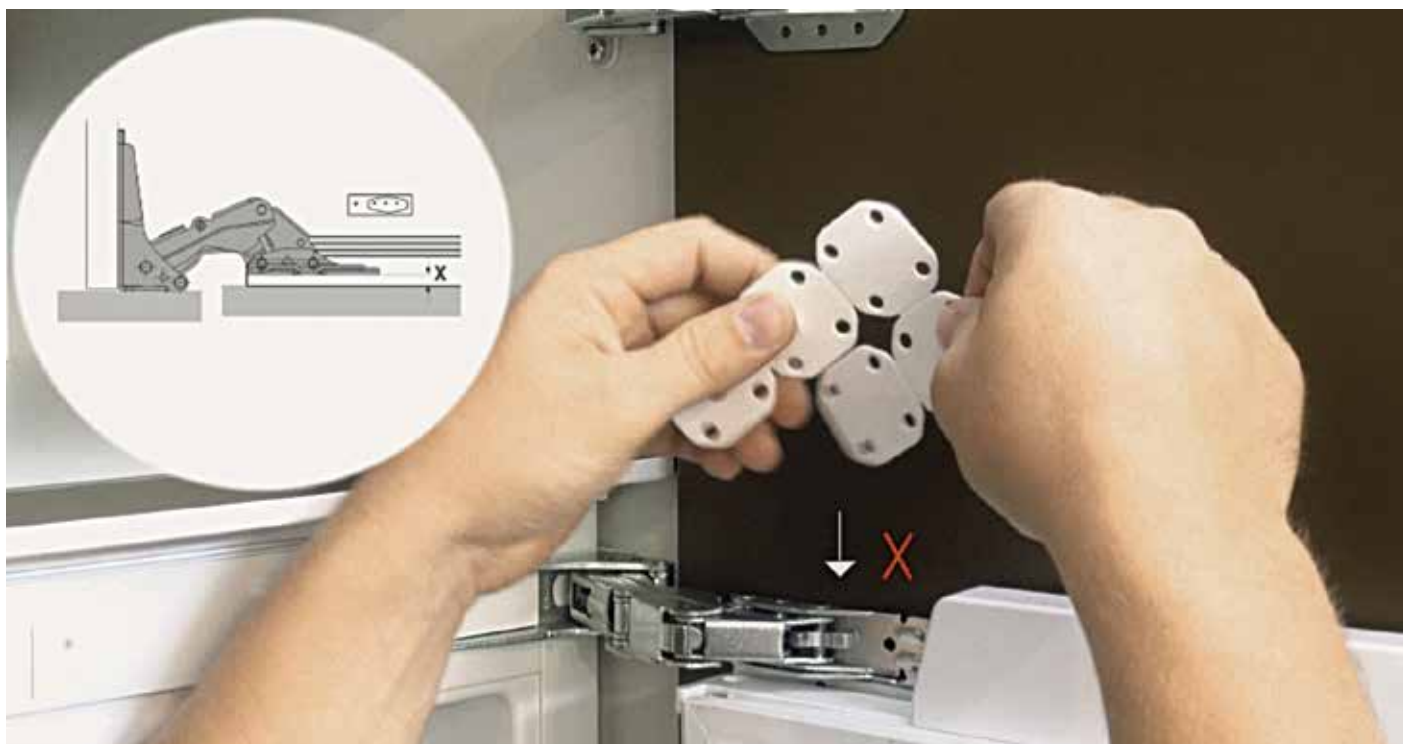
The new Kamat guiding hinge guides the extra high furniture front

The springless Kamat guides the projecting cabinet door. This additional guiding hinge and the refrigerator hinges have the same kinematics, producing a well balanced symbiosis – the front is guided and remains on track. The Kamat does not increase the loading capacity specified by the kitchen manufacturer.

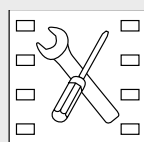
Installation made easy:

Correct positioning of the Kamat is found quickly and easily using the drilling template contained in the set. A spacer adapter is used for 16 mm thick doors. The spacer plates correct any door offset (depthwise).





This is where you will find our detailed installation video showing the various work steps:



<https://www.hettich.com/short/c4a9a9>



The Kamat guiding hinge can be used for units with extra high furniture fronts in which refrigerators and freezers are installed with K hinges from the K99, K02 and K08 series.

- ▶ K99 for doors weighing up to 45 kg, depending on the particular door format
- ▶ K02 for doors weighing up to 60 kg, depending on the particular door format
- ▶ For doors weighing up to 70 kg, depending on the particular door format
- ▶ K08 hinge with integrated Silent System for convenient, reliable and quiet closing

Special hinge

- Kamat
- For refrigerator surrounds, opening angle 115°



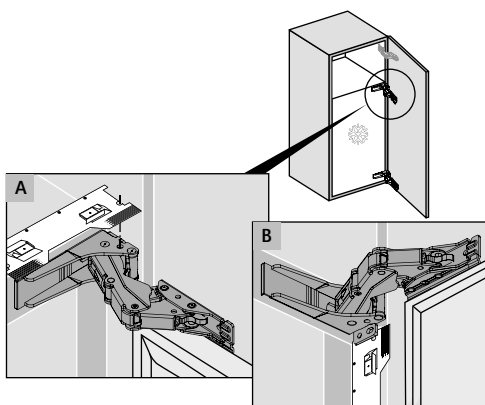
- Guiding hinge for screwing on
- Quality classification under EN 15570, Level 3
- For cabinet bodies with 19 mm or 16 mm side panels
- Installed depth 41.5 mm
- Material: steel, nickel plated

Order no.	PU.
9 239 784	1 set

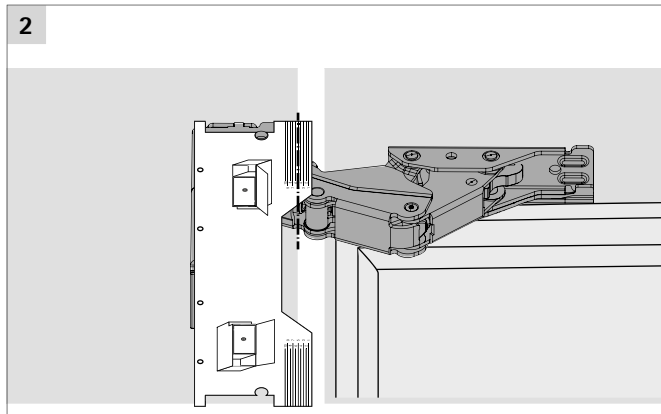
Article	Order no.	PU.
Kamat cover cap, grey	9 248 766	50 ea.

Installation

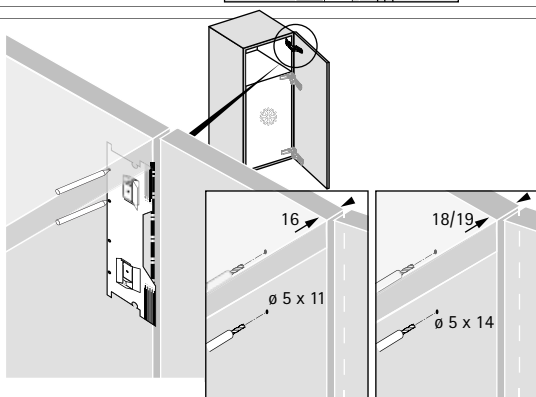
1



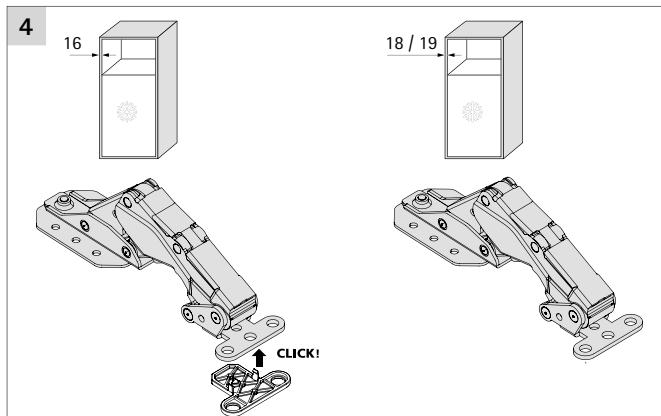
2



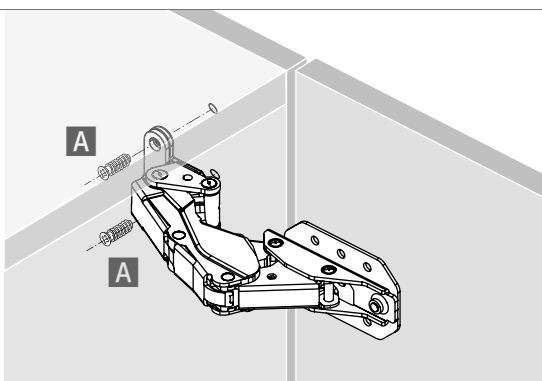
3



4



5



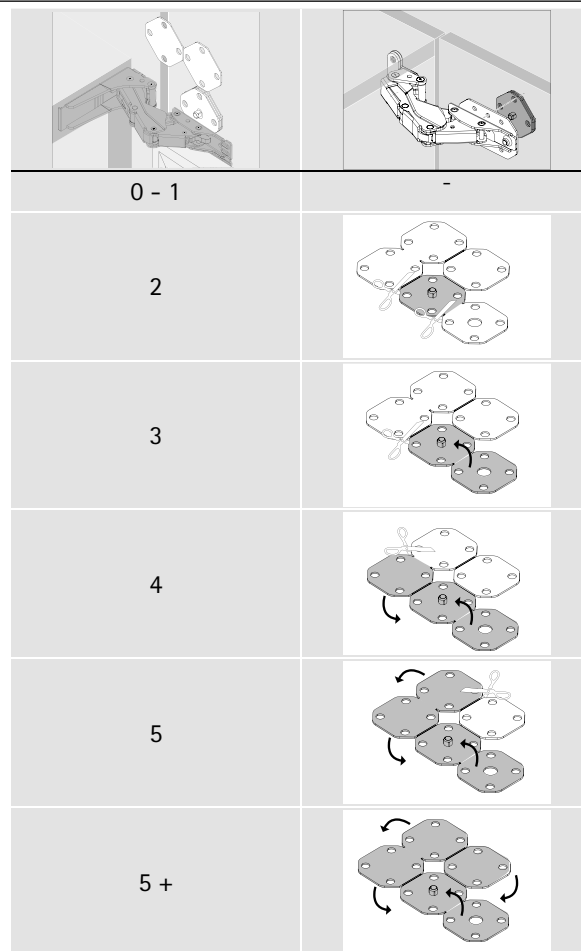
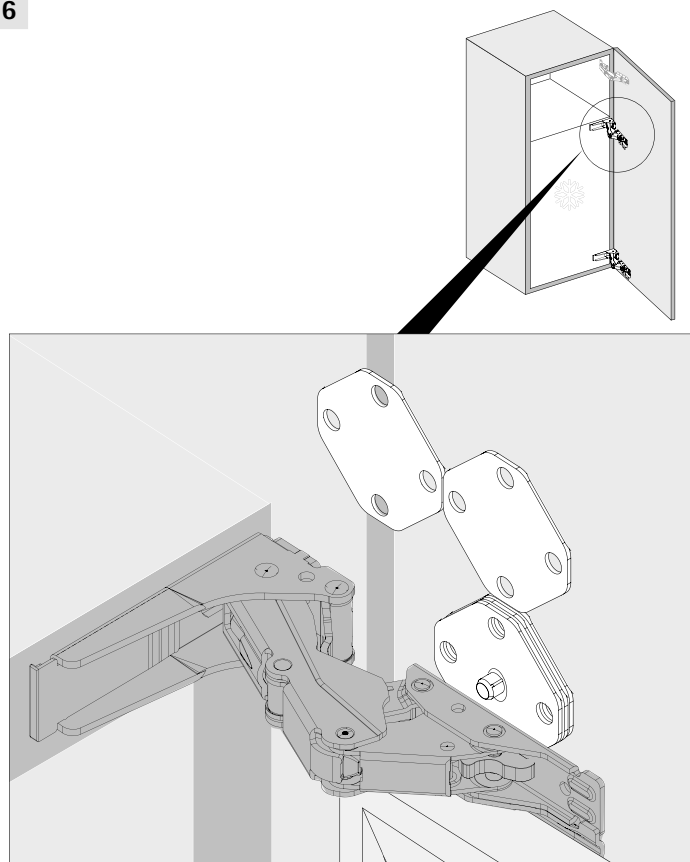
<https://www.hettich.com/short/c4a9a9>

Special hinge

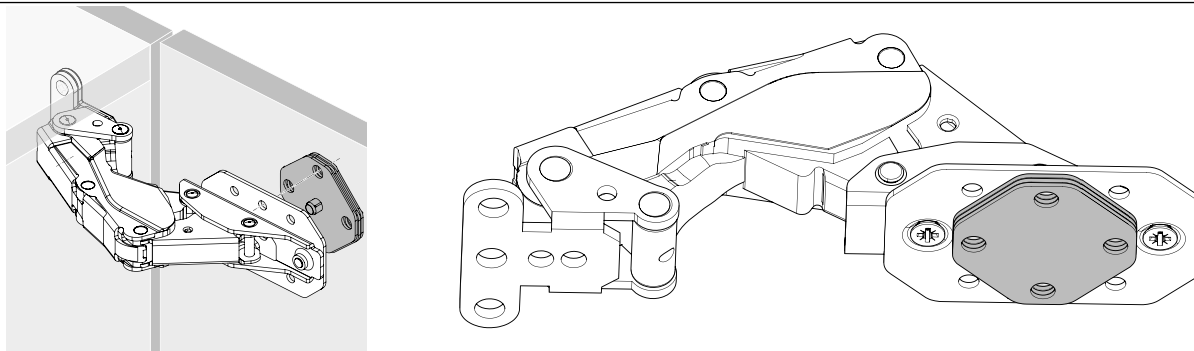
- Kamat
- For refrigerator surrounds, opening angle 115°

Installation

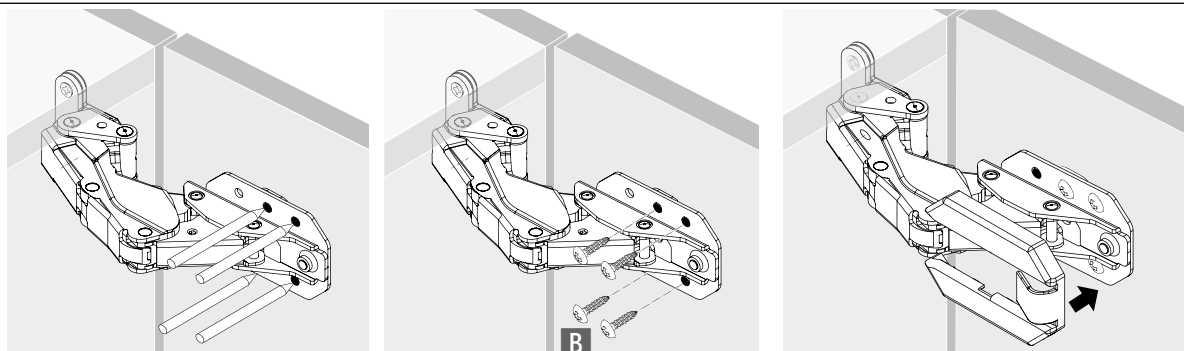
6



7



8



www.hettich.com

1801-003_Kamat_Scharnier_0818_H0N/en

Technik für Möbel

