

# Kingspan Spectrum™

a natural colour coated system



*Building  
to the Power of*



# Kingspan Spectrum™

## a natural colour coated system...

Kingspan Spectrum™ is a proven organic coating on an alloy substrate inspired by choice, aesthetic brilliance and guaranteed natural performance.

Kingspan Spectrum™ features and benefits:

- A wide range of solid and metallic colours representing the nearest appropriate RAL reference where possible
- Polyurethane coated semi-gloss finish with a slight granular effect
- Available on all Kingspan insulated panels and related ancillaries
- Alloy substrate for excellent corrosion resistance
- Excellent durability and weather resistance performance in harsh environments and climates
- A result of many years of research and development

Kingspan Spectrum™ is covered by Kingspan TOTAL Coating Guarantee for up to 30 years

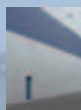
- Simple Guarantee administration
- Cut edge protection for the life of the Guarantee
- Not orientation dependant
- Guarantee is available to the building owner and is transferable
- Zero maintenance for the life of the Guarantee
- No notice requirement for the end of the Guarantee period



Kingspan Spectrum™ TOTAL Coating Guarantee Period

Inland  
30  
YEARS

Walls



Marine\*  
25  
YEARS

Inland  
25  
YEARS

Roofs



Marine\*  
21  
YEARS

\* Marine area refers to buildings within 1km of any coast

Sustain

Perform

ECOsafE

Colour

Tested

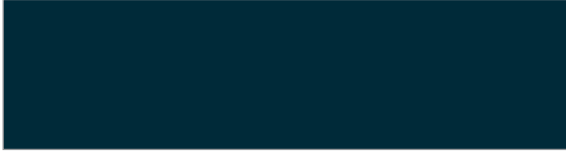
Recyclable

Unique

Mature

# > Colour Selection Chart

## Solids



Onyx

RAL 7016



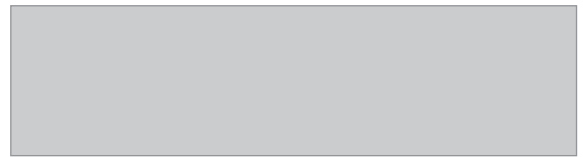
Basalt

RAL 7012



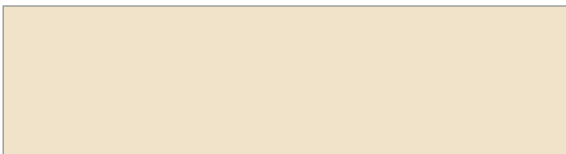
Adventura

RAL 7000



Moonstone

RAL 7035



Citrine

RAL 1015



Pearl

RAL 9010



Kyanite

RAL 5010



Zircon

RAL 5014



Lazuli

RAL 5002



Greenrock

RAL 6003



Carnelia

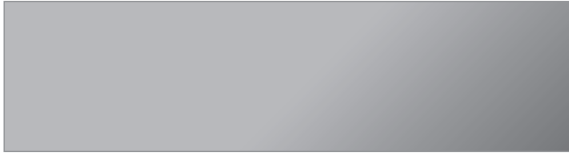
RAL 3009



Jet

RAL 9005

## Metallics



Silver

RAL 9006



Obsidian

RAL 9007



Diamond

RAL 9023



Greyrock

KC 100



Goldstone

RAL 2013



Topaz

KC 200



Nightstone

RAL 9017



Emerald

KC 300



Beigestone

RAL 1035



Opal

KC 400

Every effort has been made to ensure the printed samples correspond to Kingspan Spectrum™ colours and texture as much as possible. However, they are only a representation and they cannot convey the actual colour and effect. Metal swatches are available on request from the Marketing Services Department to view more accurate colour and texture prior to specification.



## ...natural benefits

Kingspan Spectrum™ is a natural colour coated system derived from the Kingspan objective of developing ethical purchasing policies with suppliers.

### Environmental considerations:

- With a lower environmental impact, Kingspan Spectrum™ organic coating which is based on an alloy substrate is free of PVC's and phthalates helping to facilitate recycling of the substrate
- The production process of Kingspan Spectrum™ meets the most stringent environmental regulations concerning surface treatments, solvent emissions and the removal of recognised harmful substances in the coating
- Kingspan Spectrum™ does not pose any health or contamination risk to the consumer or the environment
- Kingspan Insulated Panels are actively researching the most efficient way of recycling and re-using this material.

Kingspan Spectrum™ is an integral part of the Kingspan **ECOsafe** System. Kingspan **ECOsafe** insulated panels use an improved environmentally sustainable **FIREsafe** PIR insulation core. Environmental benefits include low global warming potential (GWP), maximised potential energy savings due to premium thermal efficiency and cost neutral options for the end of life management.

### Kingspan **ECOsafe** features and benefits:

- LPCB certified fire performance
- Helps to deliver optimum performance in environmental assessment methods such as BREEAM\*
- Specific Kingspan **ECOsafe** panels achieve A rating - the highest performing specification, allowing extra BREEAM points in the Green Guide to Specification
- Does not contain CFC's, HCFC's or HFC's
- Commercial value for disposal at end of life subject to transport costs
- Manufactured in plants that are certified to the ISO 14001, 9001 and OHSAS 18001 environmental management standards.

For further technical information on Kingspan Spectrum™ contact:

**envirocare** Technical Services UK FREEPHONE 0800 5870090 Ireland +353 (0)42 9698529

## Kingspan Spectrum™ Technical Data

Properties	Polyurethane semi-gloss finish	<ul style="list-style-type: none"> <li>- Very good UV resistance</li> <li>- Excellent corrosion resistance</li> </ul>
Applications	External roof and wall	Insulated panels to walls and facades
Description	Thickness Gloss (Gardner 60 ) Appearance	Nominal: 60 microns 30 to 50% Slight granular effect
Performance	Adhesion of the coating Resistance to cracking on bending Impact resistance Surface "Pencil" hardness Salt spray test Condensation resistance Resistance to accelerated weathering  Temperature resistance Fire  Resistance to acids Resistance to solvents	$\leq 0.5 T$ $\leq 1.5 T$ Very good F to H 1000 hours 1500 hours Gloss retention $\geq 80\%$ $-\Delta\Sigma \leq 1.2$ Maximum 80 C Rated SAA to BS 476: Part 3: 2004 Class 1 surface spread of flame to BS 476:Part 7: 1987 and is class 0, as defined by Building Regulations. Good to very good Very good



### Kingspan Limited

UK: Telephone: +44 (0) 1352 716100 Fax: +44 (0) 1352 710161 Email: [info@kingspanpanels.com](mailto:info@kingspanpanels.com)  
 Ireland: Telephone: +353 (0) 42 96 98500 Fax: +353 (0) 42 96 98572 Email: [sales.ire@kingspanpanels.com](mailto:sales.ire@kingspanpanels.com)

Details for the following countries; Australia, Belgium, Czech Republic, Germany, Hungary, Netherlands, New Zealand, Poland, Romania, Slovakia can be found by visiting our website [www.kingspanpanels.com](http://www.kingspanpanels.com) or our group website [www.kingspan.com](http://www.kingspan.com)

The colours and textures illustrated in this colour chart may be best appreciated by examining real swatches of the actual colours. Due to the limitations of colour printing, the printed swatches may not accurately convey real life textures and finishes. Care has been taken to ensure that the contents of this publication are accurate, but Kingspan Limited and its subsidiary companies do not accept responsibility for errors or for information that is found to be misleading. Suggestions for, or description of, the end use or application of products or methods of working are for information only and Kingspan Limited and its subsidiaries accept no liability in respect thereof.