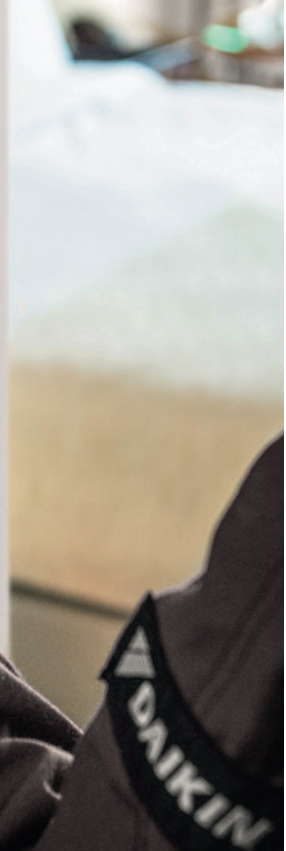




# Indoor Unit and Remote Controller

## Common settings



# Field settings

Mode	First code No.	Description of Setting					
			01	02			
10 (20)	0	Filter Contamination - Heavy/Light (Setting of time till clean filter display)	Ultra long life filter	Light	Approx. 10,000 hrs	Heavy	Approx. 5,000 hrs
			Long life filter		Approx. 2,500 hrs		Approx. 1,250 hrs
			Standard filter		Approx. 200 hrs		Approx. 100 hrs
	1	Long life filter type	Long life filter	Ultra long life filter			
	2	Air thermistor selection	Combined control	Return air only			
	3	Clean filter display	Displayed	Not displayed			
	5	Remote controller thermistor visible by central controller	No	Yes			
	6	Air thermistor used in group control	Return air (individual unit)	Dependent on 10-2 code			
11 (21)	0	Number of Split / Skyair units for simultaneous operating systems	Pair	Twin			
	2	Fan speed at thermostat off (SkyAir only)	Low low	Off			
	7	Airflow adjustment (standard ducted unit only)	Manual based on 13-6 code	ESP auto setting complete			
12 (22)	0	Optional KRP1A output - X1/X2	Indoor unit turned on by thermostat				
	1	On/off external input (T1/T2 or EKORORO)	Forced off	On/Off operation			
	2	Thermostat differential changeover (when using remote sensor)	1°C	0.5°C			
	3	Fan speed at heating thermostat off	Low low	Set fan speed			
	4	Automatic mode differential (deg C)	0	1			
	5	Auto restart after power failure	Disabled	Enabled			
	6	Fan speed at cooling thermostat off	Low low	Set fan speed			
	9	Lock Heat/Cool Master (Also disables auto mode)	Unlock	Lock			
	13 (23)	0	High air outlet velocity (high ceiling application)	Standard - Less than 2.7m	High - Between 2.7m & 3.0m		
1		Selection of air flow direction (when blanking pad fitted)	4 way flow	3 way flow			
4		Air flow direction range	Draft prevention	Standard			
5		ESP setting (phase control motor only)	Standard	+1 Steps			
18 (28)	0	Vam external input (JC/J2)	Last command	Priority on external input			
	3	Vam X24A output signal	-	-			
	8	Vam external input (JC/J1)	Fresh up	General alarm			
1a	0	Vam manual fresh up	Off	On			
1b	7	Display defrost / hot start	Yes	No			
	8	Daylight saving timer	Disabled	Automatic not available			
	12	Permit central controller to override forced off status	No	Yes			
1c	1	Thermistor displayed in room temperature display	Return air (individual unit)	Remote controller			
	4	Backlight on after delay	Off (straight to sleep)	Yes			
	12	Window contact B1 (BRP7A51)	Disabled	Enabled			
	13	Key card contact B1 (BRP7A51)	Disabled	Enabled			
1e	2	Setback function	None	Heating only			
	4	Enable schedule when central controller fitted	Not available	Available			
	7	Duty rotation overlap time	30 minutes	15 minutes			

N.B. The above field settings are based on A series SkyAir & A series VRV fan coil units, and the BRC1H519 Madoka remote controller. Please refer to the installation and service manuals relevant to your specific unit for a more comprehensive list of field settings.

**Second Code Nos.**

03	04	05	06	07	08
Remote controller only	Lamp soot removal				
Triple	Double twin				
Start ESP auto setting run					
Operation output	Malfunction output				
System forced off	Forced off (no centralised override)				
Off					
2	3	4	5	6	7
Off					
Extra high - Between 3.0m & 3.5m					
2 way flow					
Ceiling soiling prevention					
+2 Steps					
Priority on operation	Forced stop / disable night time free cooling	-	24 hour ventilation on/off		
Damper only heating	Damper all modes				
General malfunction	Forced stop	Forced fan off	Air flow up		
Manual	Central control				
Always illuminated					
Cooling only	Heating & Cooling				
10 minutes	5 minutes				

# BRC1H519 Madoka

## Remote controller settings

Mode	SW	Description	Value												
			0	1	2	3	4	5	6	7	8	9	10	11	12
R1	3	Remote controller thermistor offset (Cooling) °C	-3.0	-2.5	-2.0	-1.5	-1.0	-0.5	0	+0.5	+1.0	+1.5	+2.0	+2.5	+3.0
	4	Remote controller thermistor offset (Heating) °C	-3.0	-2.5	-2.0	-1.5	-1.0	-0.5	0	+0.5	+1.0	+1.5	+2.0	+2.5	+3.0
	5	Remote controller thermistor offset (Auto) °C	-3.0	-2.5	-2.0	-1.5	-1.0	-0.5	0	+0.5	+1.0	+1.5	+2.0	+2.5	+3.0
	6	Remote controller thermistor offset (Fan only) °C	-3.0	-2.5	-2.0	-1.5	-1.0	-0.5	0	+0.5	+1.0	+1.5	+2.0	+2.5	+3.0
	7	Home screen setting	Detailed	Standard											
	8	Backlight timer (Seconds)	5	10	20										
	9	Status indicator faintness (%)	0	1	2	3	5	7	9	11	13	15	17	20	
	10	Backlight faintness (%)	0	1	2	3	4	5							
	11	Status indicator mode	Normal	Hotel 1	Hotel 2										
	12	Bluetooth & menu disable	Disable	Enable											
	13	Keep Bluetooth disabled status through power reset	Forget	Remember											
	R2	1	Touch button indicator	None	Small	Medium	Large								

 = Default value

The present leaflet is drawn up by way of information only and does not constitute an offer binding upon Daikin UK. Daikin UK has compiled the content of this leaflet to the best of its knowledge. No express or implied warranty is given for the completeness, accuracy, reliability or fitness for particular purpose of its content and the products and services presented therein. Specifications are subject to change without prior notice. Daikin UK explicitly rejects any liability for any direct or indirect damage, in the broadest sense, arising from or related to the use and/or interpretation of this leaflet. All content is copyrighted by Daikin UK.

