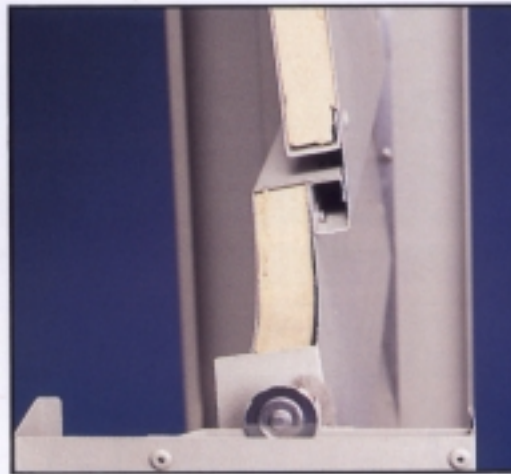
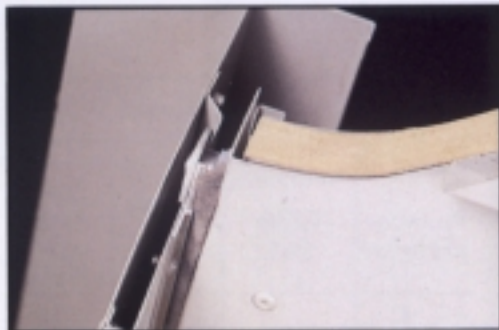
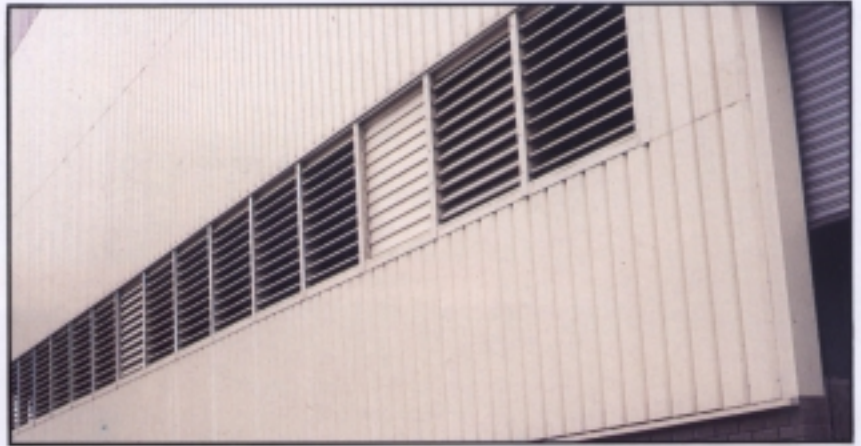


MM THERMAC Operating Louvre



The Thermac, an energy saving operating louvre, is suitable for vertical mounting into sidewall cladding, glazing and brickwork. Each unit incorporates polyurethane insulation within the double skin louvre blades as an energy conservation measure. Additionally units are fitted with pile draught sealing strips which engage with the louvre blade sides in the closed position to eliminate draughts and daylight penetration.

Designed principally as a controllable air inlet for mounting in low level situations, the unit also offers the facility of an effective barrier against valuable heat loss when in the closed position.

Installations of these units may be used in conjunction with roof ventilators to provide an overall system of natural and/or fire ventilation and may be installed singly, in horizontal runs, or in vertical tiers.

Design Features

1. The louvre blades contain 30mm polyurethane insulation, having a 'U' value of $0.6 \text{ W/M}^2 \text{ } ^\circ\text{C}$.
2. Each blade is connected to side mounted link arms to ensure positive opening and closing of the units.
3. Water repellent silicone treated polypropylene pile draught seals

cont.

Design Features cont.

Manufacturing Options

Materials

Controls

Maintenance

Fixing

Ventilation Schemes

Performance

Sizes/Dimensions

mesh with the blade end flanges to reduce draughts and daylight penetration to a minimum when the

unit is in the closed position.
4. Louvre blades pivot on maintenance free double nylon bearings.

1. The box depth can be located inside or outside the building line as required.
2. The louvres can be spring loaded to either open or close.
3. Expanded metal bird guards,

security guards or fly mesh can be fitted internally or externally if required.
4. Where units are supplied for mounting in horizontal runs jointing plates are supplied for weathering.

Offered in a choice of aluminium or steel:
British Steel Colorcoat Plastisol coated galvanised steel in a full range of colours or alternatively in plain galvanised steel or mill finish aluminium alloy to BS 1470 NS3 H4 in a choice of painted finishes and colours.

Insulant: Foil backed polyurethane insulation:
30mm thick giving a 'U' value of 0.6 W/M² °C

1. **Manual:**
 - (a) Nylon covered wire cable to:
 - (i) clam cleat – variable opening positions
 - (ii) winch – variable opening positions
 - (b) Hand operated (friction loaded)
 - (c) Pole operated
2. **Pneumatic** – for day to day ventilation, incorporating fireman's override if required. Additional options include connection to smoke

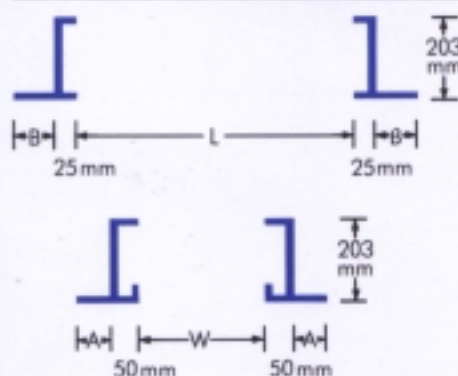
detection systems, thermostats, time switches, etc.
3. **Electro-magnets** – these retain the louvre in the closed position until de-energised by remote signal. Units fitted with electro-magnets require manual resetting.
4. **24V electric actuator** or motor to special order.
5. **Fusible links** – alternative temperature rated links are available.

Units should be subject to periodic testing and regular inspection.

Fully detailed fixing instructions supplied with units.

Recommendations or complete schemes prepared and submitted on request.

* The unit has a discharge co-efficient of 0.45.



Side flange A –
To suit required mounting detail
Top and bottom flange B –
A standard 75 mm unless otherwise requested

| Number of blades | Width (W) | Length (L) mm | Free Area co-efficient |
|------------------|--|---------------|------------------------|
| 4 | from 365 mm to 1040 mm in 75 mm increments | 650 | 0.515 |
| 5 | | 783 | 0.55 |
| 6 | | 916 | 0.575 |
| 7 | | 1049 | 0.5925 |
| 8 | | 1182 | 0.6075 |
| 9 | | 1315 | 0.62 |
| 10 | | 1448 | 0.63 |
| 11 | | 1581 | 0.6375 |
| 12 | | 1714 | 0.645 |
| 13 | | 1847 | 0.65 |
| 14 | | 1980 | 0.655 |
| 15 | | 2113 | 0.66 |



McKenzie Martin Ltd

Eton Hill Works, Eton Hill Road, Radcliffe, Manchester M26 9US
Tel: 0161 - 723 2234 Fax: 0161 - 725 9531