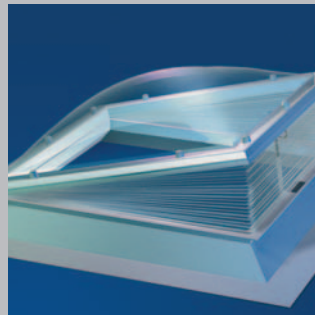
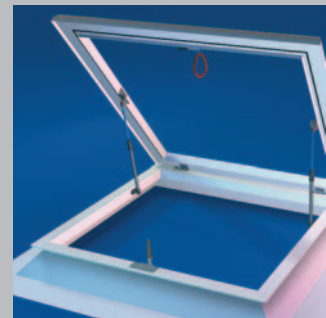
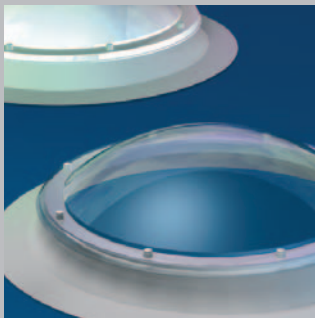
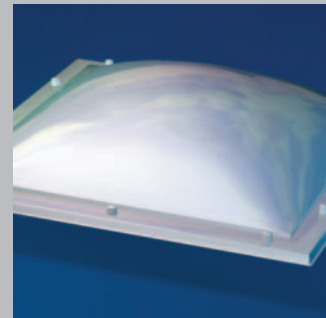




McKENZIE MARTIN

VENTALUX
ROOFLIGHTS



The **VENTALUX** rooflight system comprises a standard range of high impact polycarbonate rooflights mounted onto white PVC upstands.

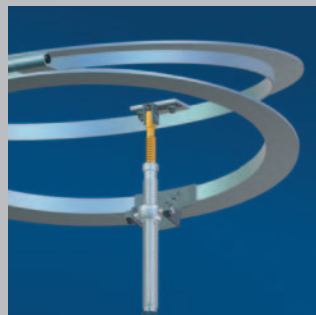
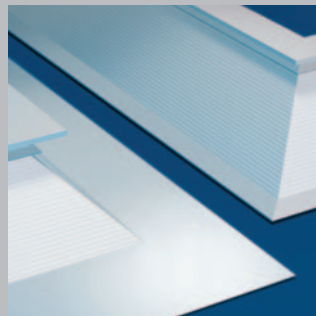
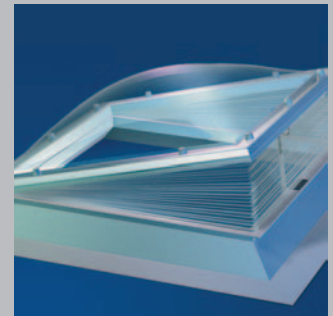
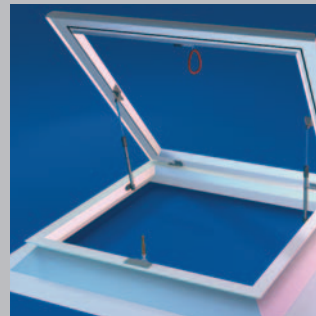
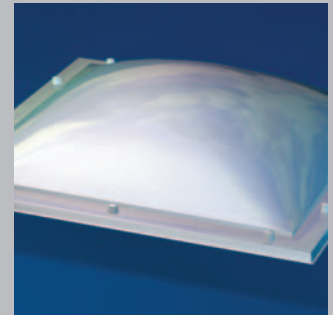
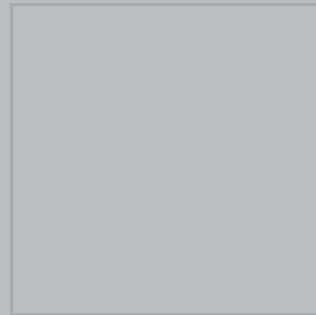
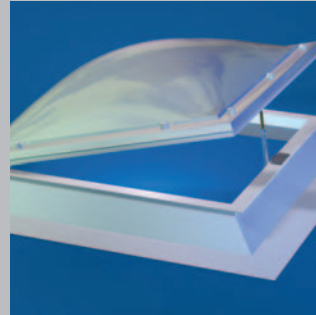
Available in a variety of shapes and sizes, the units are easy to install and are manufactured to the highest standards. Domes and upstands are easily assembled and provide a watertight and burglar resistant system. The units bases can be manufactured with small or broad based flanges.

Optimum use of natural daylight and the insulation value of the PVC upstands, together with the domes, provide a high degree of energy saving.

The range consists of rectangular, square and round rooflights manufactured in white PVC together with rounded or pyramid shaped domes available in clear, opal or coloured finish in single, double or triple skin.

OPTIONS INCLUDE

Sunshade System, Security System, Insect Screen



TECHNICAL INFORMATION

High impact resistant rooflights

These are made of polycarbonate with a UV-protection layer.

	PC
Impact resistance in relation to glass	300x
Fire classification according to NEN 3883	2
Service temperature	140°C

INSULATION VALUES

Rooflight	U- Value W/M ² K
Single skin	5.6
Double skin	2.8
Triple skin	1.9
PVC upstand small flange	2.8
PVC upstand broad flange 15cm, with Polystyrene insulation	1.3
PVC upstand broad flange 30cm, with Polystyrene insulation	1.0
PVC upstand broad flange 30cm without Polystyrene insulation	2.2

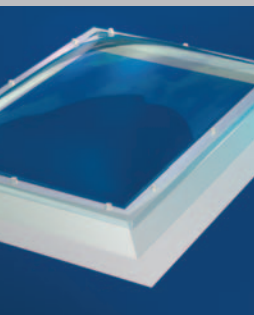
LIGHT TRANSMISSION

Rooflight	PC
Single skin clear	88%
Single skin opal	49%
Double skin clear	77%
Triple skin clear	68%

All inner skins clear

VENTALUX SUNSHADE SYSTEM

Building Physical Values	Double Skin Rooflight	Double Skin Rooflight with Plisse
U-value	2.8 W/M ² K	2.2 W/M ² K
LTA	85%	35%
ZTA	83%	42%



McKENZIE MARTIN LIMITED

ETON HILL WORKS □ ETON HILL ROAD □ RADCLIFFE □ MANCHESTER □ M26 2US

TEL: 0161 723 2234 □ FAX: 0161 725 9531

EMAIL: general@mckenziemartin.co.uk

DOMES

Manufacture

- Standard rooflights and pyramids made of high-impact polycarbonate with a UV-protection layer.
- Provided with anti-burglary fixing system as standard.

Options

- Clear, opal or coloured finish.
- Single, double or triple skin.

Shapes

- Rectangular, square and round (rounded domes with a height of 1/5 of the smallest daylight size).
- Pyramid (standard dome height of 1/3 x daylight size).
- Round rooflights, available with GRP upstands only.

UPSTANDS

Manufacture

- Manufactured from high-impact resistant PVC, UV-stabilised.

Colour

- Available in white only.

Installation

- The upstands are easy to install and maintenance-free.

SUNSHADE SYSTEM

The Ventalux sun-blind system consists of a plisse fabric with a Parelmoer coated layer on a RAL 9010 painted aluminium frame. The system can be used to reduce solar glare and provide privacy.

Colours

- The sun-blind is available in a choice of 8 colours.

Operation Options

- Manual Operation
 - Opened and closed by sliding the plisse manually.
- Rotor Operation
 - Manual - opened and closed by turning the operating pole manually.
 - Electrically - operating pole is electrically driven by battery.
 - Remotely controlled - an electro-motor remotely operates the blind by means of a switchboard mounted onto an adjacent wall.

INSECT SCREEN

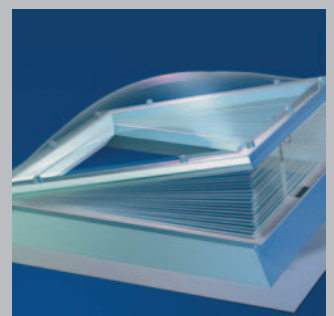
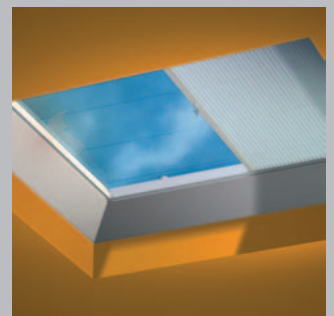
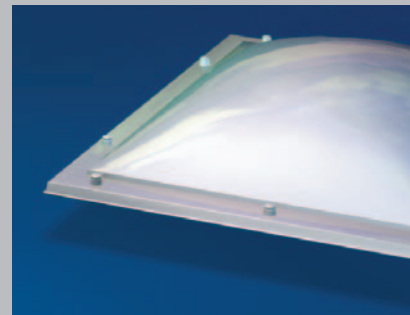
An insect screen is available for square and rectangular rooflights.

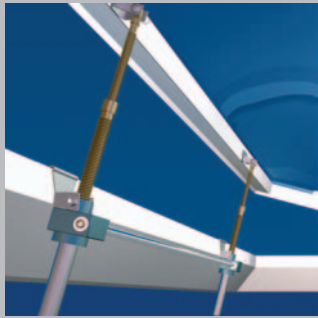
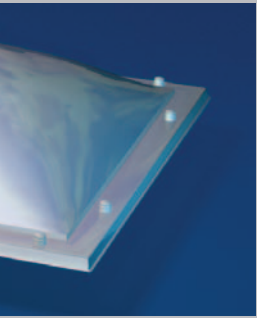
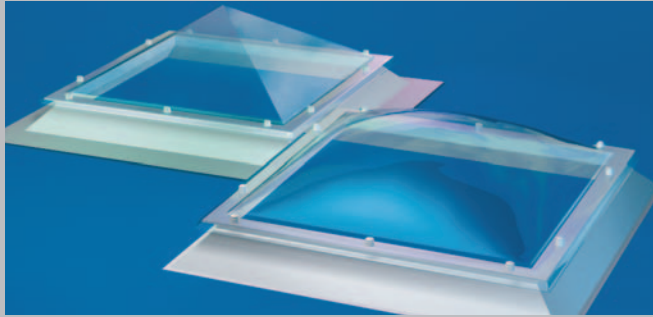
Manufacture

- Made of a strong and maintenance friendly glass fibre with a coating of ultra light PVC.

Sizes

- Available in almost all sizes.





SIZES

Please see separate sheet for full details of sizes/options.

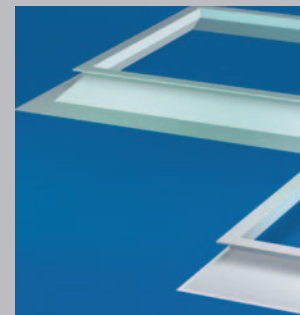
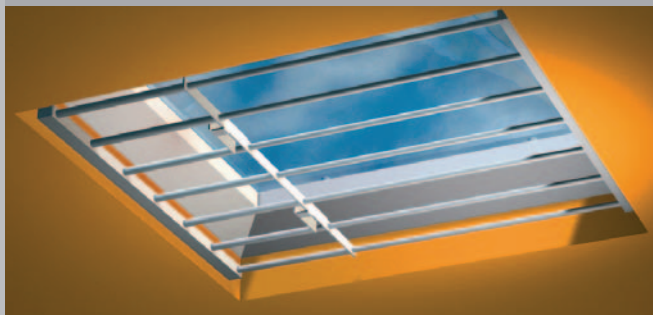
SECURITY SYSTEM

An internally mounted security and protection system is available in six different sizes.

- All six sizes are extendable.
- The width of the opening between the grill and the roof opening has to be less than 150mm in order to be effective.
- System can be locked in position by key operation.

SAFETY

The rooflights are considered to be a "fragile roof" and it is therefore recommended that temporary safety barriers should be used when any work is undertaken on a roof in the vicinity of a rooflight.



I. PVC UPSTAND WITH A SMALL FLANGE

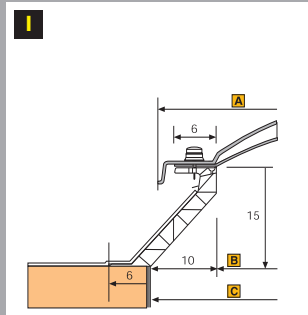
(150mm high)

A - Outer dome dimension

B - Daylight size

C - Roof opening (daylight size + 200mm)

The small flange PVC upstand is double skinned with a standard height of 150mm.



II. PVC UPSTAND WITH A BROAD BASE FLANGE

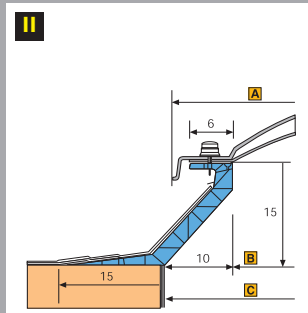
(150mm high)

A - Outer dome dimension

B - Daylight size

C - Roof opening (daylight size + 200mm)

The broad flange PVC upstand is double skinned with Polystyrene insulation filling.



III. PVC UPSTAND WITH A BROAD FLANGE

(300mm high)

A - Outer dome dimension

B - Daylight size

C - Roof opening (daylight size + 200mm)

The broad flange PVC upstand is double skinned and can be delivered with or without Polystyrene insulation filling.

