



neaco

Aluminium **Plank Decking**

3

Why Choose Neaco?

3

Why Choose Aluminium?

4-5

Neatlok Aluminium Plank

6-7

Neatwalk Aluminium Plank

8

Testimonials

9

Completed Projects

Why Choose **Neaco?**

- | Long-established company (founded in 1972) with decades of manufacturing experience
- | British manufacturer committed to the highest standards of precision engineering
- | 52,500 square foot manufacturing facility in North Yorkshire
- | Comprehensive design and technical expertise to back manufacturing excellence
- | Able to design and supply bespoke solutions tailored to exact requirements
- | Full turnkey solution (from design to installation) with support at every step of the process
- | Decking manufactured from sustainable materials
- | Wide range of products to complement decking, including balustrades and balconies
- | All products backed by a 25-year guarantee

Why Choose **Aluminium?**

| **Non-Combustible**

All decking is A1-A2 Fire Rated and fully compliant with the latest regulations

| **Extremely Durable**

Our aluminium flooring has a design life of 60+ years

| **Low Risk of Slip**

Superior slip resistance in both wet and dry conditions

| **Lightweight**

One third the weight of steel, aluminium is light and easy to handle, so it saves on manpower

| **Environmentally Friendly**

Made from 100% recyclable material

| **Maintenance-Free**

Our decking is virtually maintenance-free

| **High-End Aesthetic**

Whether mill finished or colour coated, our decking's high-end aesthetic will complement any design

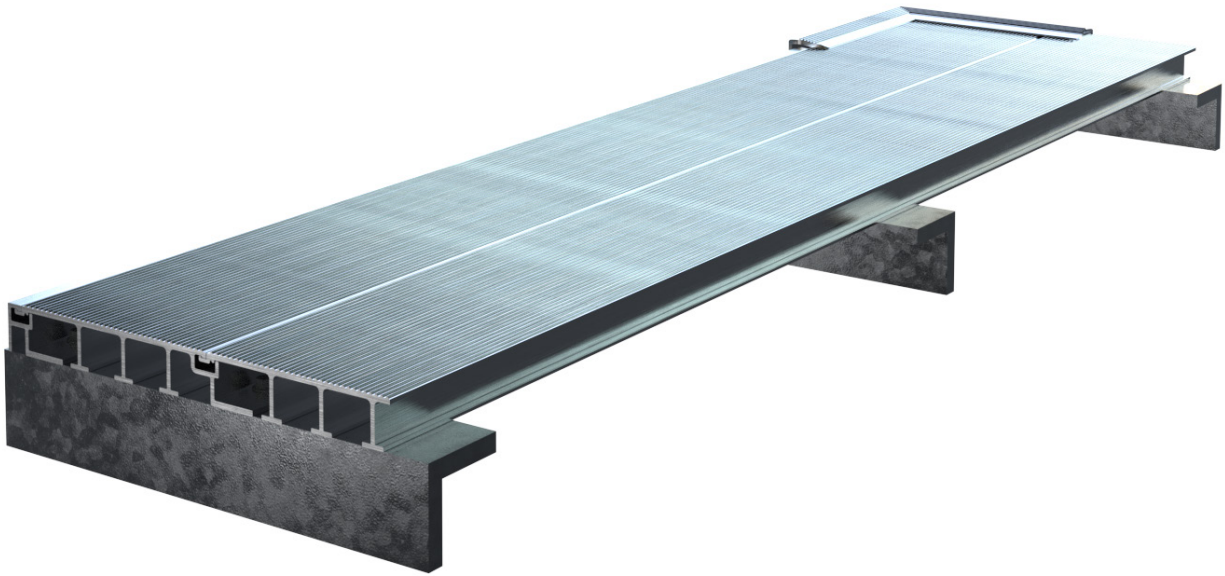
| **Corrosive-Free**

Aluminium will, with time, generate a protective oxide film coating giving excellent resistance to corrosion

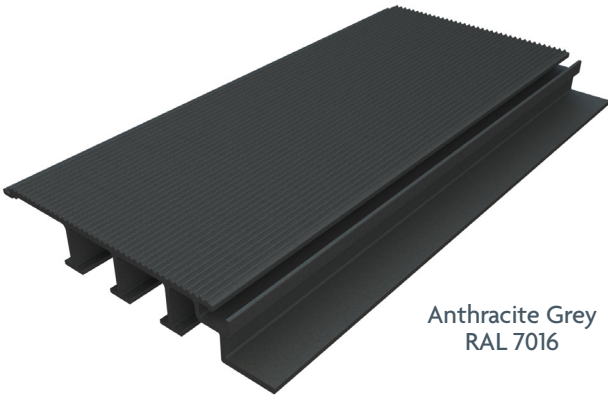


NEATLOK

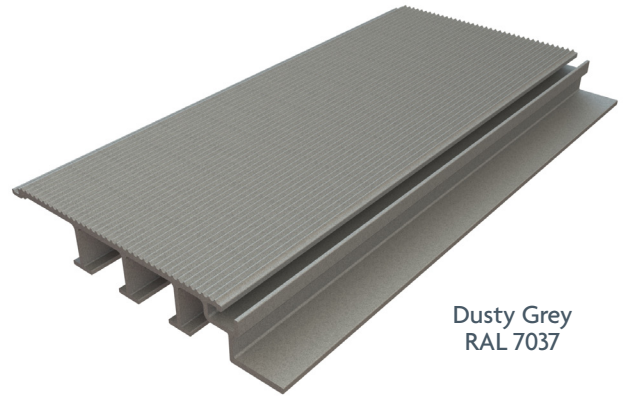
- | **Fire Rating:** A1 Fire Rated (mill finished) and A2 Fire Rated (colour coated)
- | **Spanning Capabilities:** Excellent spanning capabilities (see data sheet)
- | **Drainage:** The closed construction provides directional drainage
- | **Slip Resistance:** Categorised as 'low risk of slip' in both wet and dry conditions
- | **Data Sheet:** Technical Data Sheet available upon request
- | **Samples:** Samples available upon request
- | **Cut & Coat Service:** Neatlok can be cut to bespoke lengths then powder coated to preserve the coating



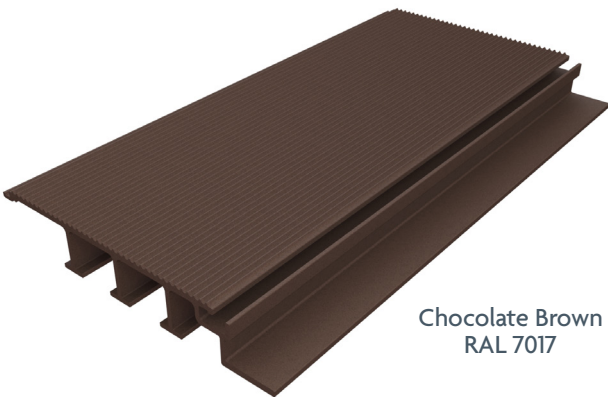
Colour Options



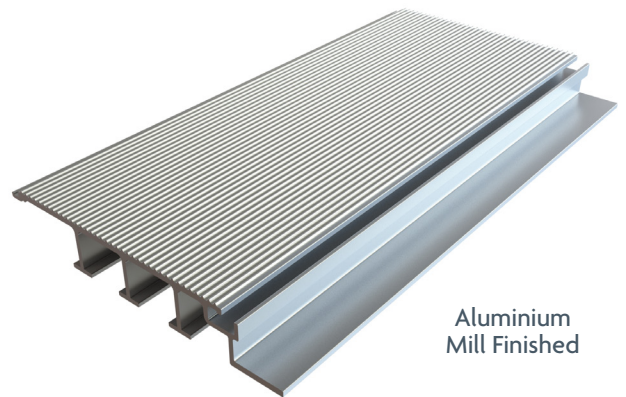
Anthracite Grey
RAL 7016



Dusty Grey
RAL 7037

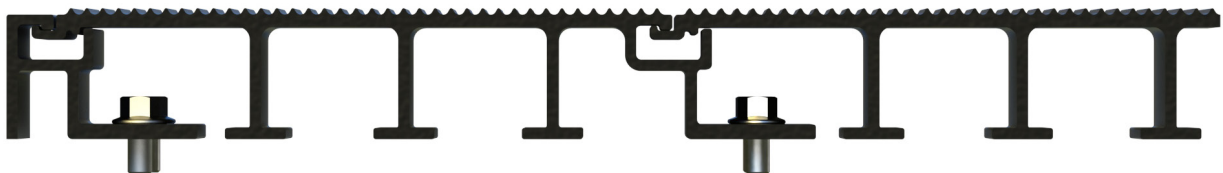


Chocolate Brown
RAL 7017



Aluminium
Mill Finished

Our planks are available in a range of standard colours or as mill finished aluminium. Alternatively, we can coat to any RAL colour.





Neatwalk

| **Fire Rating:** A1 Fire Rated (mill finished) and A2 Fire Rated (colour coated)

| **Spanning Capabilities:** Excellent spanning capabilities (see data sheet)

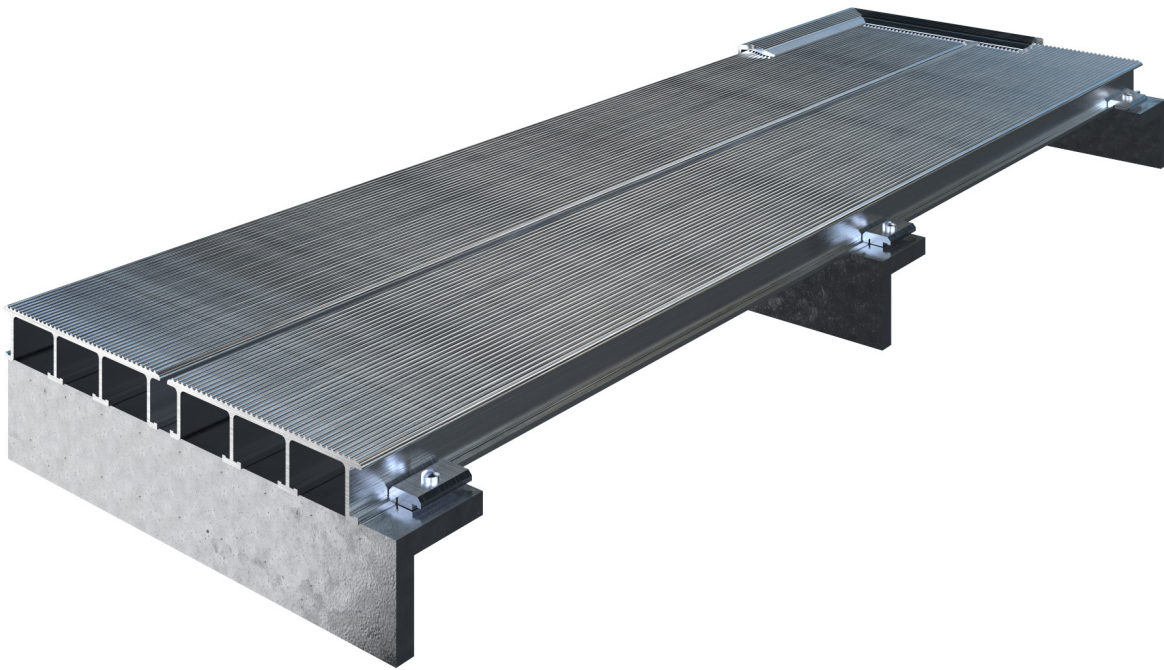
| **Drainage:** The open construction provides a free draining solution

| **Slip Resistance:** Categorised as 'low risk of slip' in both wet and dry conditions

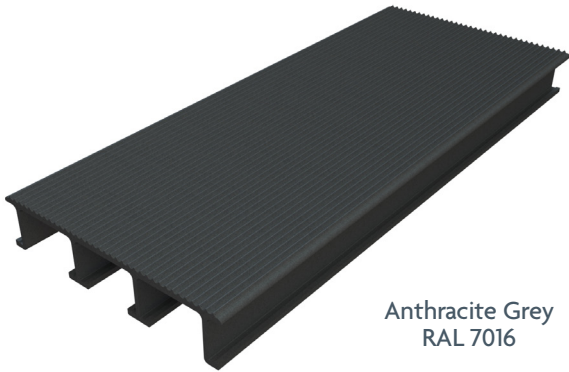
| **Data Sheet:** Technical Data Sheet available upon request

| **Samples:** Samples available upon request

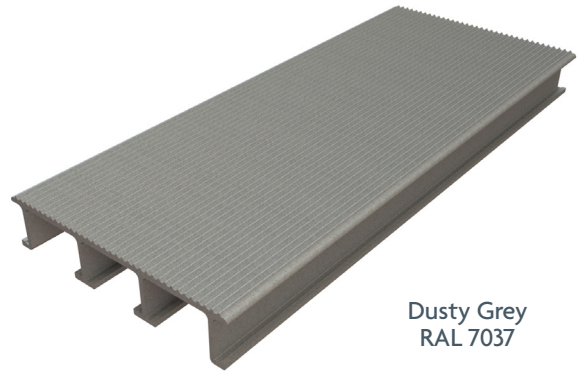
| **Cut & Coat Service:** Neatwalk can be cut to bespoke lengths then powder coated to preserve the coating



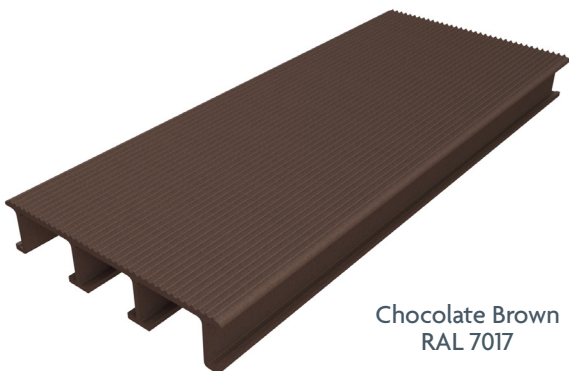
Colour Options



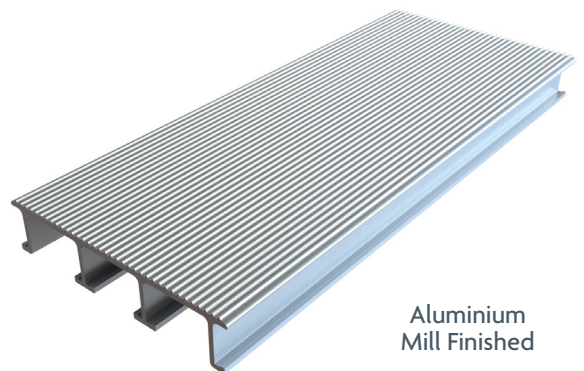
Anthracite Grey
RAL 7016



Dusty Grey
RAL 7037

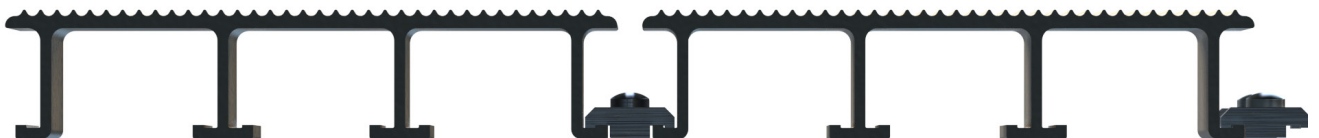


Chocolate Brown
RAL 7017



Aluminium
Mill Finished

Our planks are available in a range of standard colours or as mill finished aluminium. Alternatively, we can coat to any RAL colour.



Testimonials

I'm more than happy with the service and products supplied by Neaco - their combination of decking and balustrade has been an excellent choice for this development. I'm familiar with the products, having used them on a number of other projects as well as my own home.

BRAMHALL BLENKHARN ARCHITECTS

We have used Neaco on a number of past projects. Neaco's products are high in quality and we like the simplicity of their design. Neaco's capabilities provide a one-stop shop for design consultation, measuring, manufacturing and fitting, so working with them removes a lot of the agony that can occur on some projects.

ALSTON MURPHY ARCHITECTS

We wanted an aesthetically pleasing façade and Neaco's product was the most visually impressive and commercially viable choice. The completed installation looks very smart and Neaco's technical support was excellent. They were very flexible in providing a design solution which accommodated the structural demands of the building and we will definitely work with Neaco again in future projects of this type.

DANE ARCHITECTURAL

The client is over the moon with the result of the redevelopment and Neaco's service was very involved from start to finish. They attended regular on-site meetings to discuss the installation details and dealt with any issues quickly and effectively.

WHARTON CONSTRUCTION



We wanted a contemporary aesthetic and that's why we chose Neaco. Their balcony systems provide design versatility with modular components which combine for a made-to-measure solution. In terms of installation, it was a technically challenging project and Neaco dealt with any issues quickly and effectively. We are proposing to use Neaco again for the next refurbishment project.

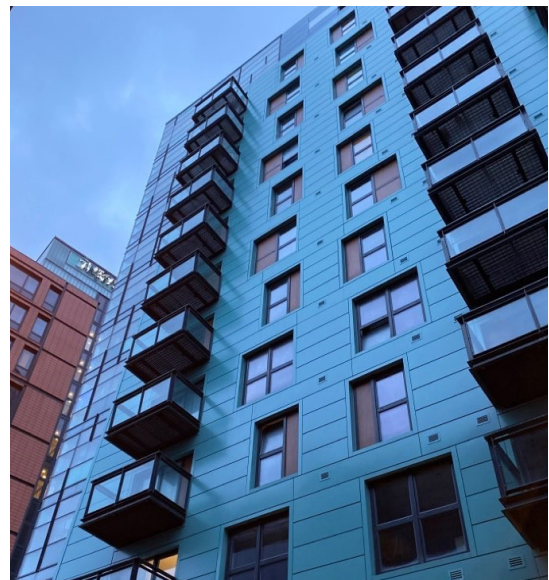
CTD ARCHITECTS

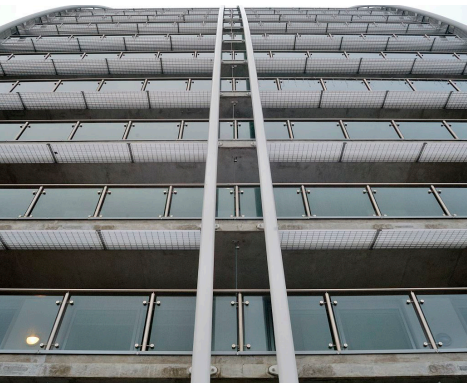
Neaco's products were ideal for the demanding technical requirements of our project which included a curved roof structure - the walkway is a versatile system which has the ability to adapt to its curvature. It's also very strong, robust and looks great in comparison to plastic alternatives on the market.

EUROSAFE SOLUTIONS

Neaco's design, product and manufacturing service are superb. Projects like this are subject to tight build schedules to minimise disruption to the college's activities, so we needed a fast manufacturing turnaround and installation which Neaco provided in time for the start of a new academic year. Neaco provided comprehensive technical support with site survey, design and installation. They achieved efficient completion of the work on site to a high standard whilst minimising disruption to other areas of the site and other contractors involved in the project.

HOBSON & PORTER





Other products in the **Neaco Architectural Range**



Decking
MODULAR DECKING



Balconies
MODULAR WALK-ON AND JULIET BALCONIES



Balustrade
MODULAR BALUSTRADES



Bathing
ADAPTIVE BATHROOM FACILITIES



Registered Office:

Norton Grove Industrial Estate, Norton, Malton, Yorkshire YO17 9HQ England

T 01653 695 721 **E** sales@neaco.co.uk

www.neaco.co.uk

Registered England 1065772. VAT NO. 168 2239 51.