

## System 800

## NEWTON 804-DPC

## Injection Damp Proofing Cream

Rev 1.0 - 6 March 2018

PRODUCT CODE - 804DPC

## INTRODUCTION

*Newton 804-DPC is a BBA certified, high-quality damp proofing cream that is injected into the mortar bed, where it spreads along the mortar pathway to form an effective damp proof course. This in turn protects the wall from rising dampness, and is effective, even to walls that are at 95% saturation.*

*Beware of imitation - Newton 804-DPC includes up to 4 x more active ingredients than typical damp proofing creams, to form a much more effective DPC. It is also significantly quicker to install than traditional chemical injection damp proof courses.*

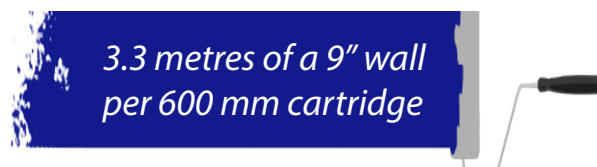
*A dry wall is also a warm wall. The drying wall, treated with 804-DPC, will be more thermally efficient than before, resulting in less energy being used to heat the home. Furthermore, once dry, the wall will be less subject to the effects of freezing and the associated damage. 804-DPC should be included within all damp proofing works as a matter of course.*



## PACKAGING



## COVERAGE



## KEY BENEFITS

- BBA certified for proven performance
- Effective DPC for at least 20 years
- Improves thermal performance of the walls
- Higher active ingredient produces a better performing DPC than alternative creams
- No electric DPC pump requirement
- Quick and easy to install
- Usable in a wide variety of walls including brick, stone and rubble construction
- Solvent-free
- Effective even when the wall is up to 95% saturated
- Low spillage risk and no issue with product leaking into neighbouring properties
- Suitable for all types of mortar
- Easy application rate calculations
- Very low odour and low health hazard

## TYPICAL APPLICATIONS

- Injected damp proof course to prevent rising damp
- As part of the [Newtonite Damp Proofing System](#) when used in conjunction with [Newton System 800](#) damp proofing membranes

## SUITABLE SUBSTRATE

Walls of:

- Brick & Block
- Stone & rubble



# NEWTON 804-DPC

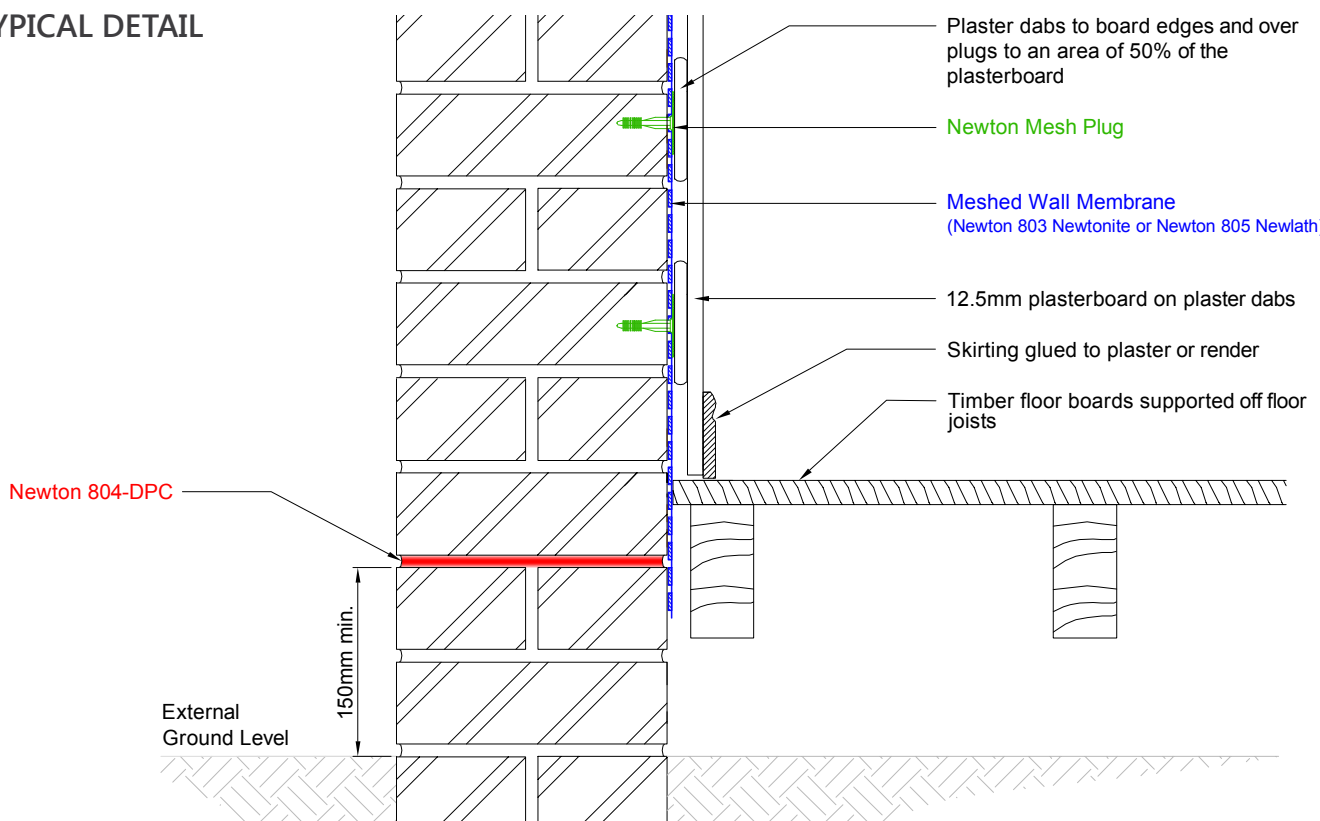
## Injection Damp Proofing Cream

### TECHNICAL DATA

Features	Result
Form	Thick paste/cream
Colour	White
Packaging	600 ml foil cartridge
Pot life	N/A
Shelf life	18 Months
Application rate per 600 ml foil cartridge - 4.5" wall	6.6 metres
Application rate per 600 ml foil cartridge - 9" wall	3.3 metres
Application rate per 600 ml foil cartridge - 13.5" wall	2.2 metres
Application rate per 600 ml foil cartridge - 18" wall	1.6 metres
Application temperature	+5°C to +40°C

The above data, even if carried out according to regulated tests are indicative and may change when specific site conditions vary. Application rates will vary depending on the density and the straightness of the wall.

### TYPICAL DETAIL



### ACCREDITATIONS & APPROVALS

Newton 804-DPC is supported by BBA Agrément Certificate 18/5497 and is accepted by the NHBC as a suitable damp proofing system.

### COLOUR

White - becomes translucent after application.

### PACKAGING

600 ml foil cartridge.

### ANCILLARY PRODUCTS

- [Newton 808-RA](#) - Render Additive
- [Newton System 800](#) - Damp Proof Wall Membranes

### LIFE EXPECTANCY

When correctly installed, the product will remain effective against rising damp for at least 20 years.

### METHOD OF APPLICATION

Hand powered, [Newton DPC Application Gun](#).

# NEWTON 804-DPC

## Injection Damp Proofing Cream

### SPECIFICATION

Newton Waterproofing Systems are in partnership with RIBA NBS who publish details of our products and systems within their specification clause library to allow Architects ease of specification through their NBS Plus interface. NBS clauses can be accessed via the technical resources area of the web site where a live NBS Feed is available at [NBS Plus Live Feed](#)

Our website has drawings available for download in [Technical Drawings](#). A selection are also available via [FastrackCAD](#), as well as a range of BIM objects on the [NBS National BIM Library](#)

### TRAINING & COMPETENCY OF USER

Damp proofing works should be carried out by those with an understanding of dampness and the causes of dampness within buildings. They must have the knowledge and training to use the product as part of a coordinated approach to the damp proofing of the structure, which in many cases will require further Newtonite System products in order to achieve the required dry internal environment.

### SPECIALIST TOOLS REQUIRED

- SDS drill - 110v
- 12 mm SDS drill bit
- Applicator gun - Newton DPC Application Gun

### CONSUMPTION

The following table indicates the number of 600 ml foil cartridges that are required for a given thickness and length of wall.

Wall Length	Wall Thickness			
	115 mm 4 1/2"	230 mm 9"	345 mm 13 1/2"	460 mm 18"
10 m	1.5	3.3	5.1	6.9
20 m	3.0	6.6	10.2	13.8
30 m	4.5	9.9	15.3	20.7

Please bear in mind that the figures are indicative and that consumption is dependent on many factors, such as the density of the mortar beds, porosity or voids, and the smoothness and regularity of the wall. Please take this into account when ordering the product.

### PREPARATION

Remove all contaminated plaster to expose the underlying masonry.

All loose material should be removed by brushing clean.

Use a vacuum cleaner to remove drill dust from the drilled holes.

### APPLICATION

Set your SDS drill to the hammer setting and select a 12 mm drill bit. To ensure the product is injected to the correct depth to the wall, mark the drill bit the following distances in from the tip:

Depth of drill hole	Wall Thickness			
	115 mm 4 1/2"	230 mm 9"	345 mm 13 1/2"	460 mm 18"
	95 mm	210 mm	325 mm	440 mm

When treating from outside, a row of holes should be drilled into the mortar course 120 mm apart and at least 150 mm above the ground. When treating from the inside, holes should be drilled into the lowest accessible mortar course. Where there are changes of ground level, use a higher or lower mortar bed. Vertical mortar courses are required to connect the courses that are at differing levels.

Cavity walls should be considered as separate walls.

With walls of random mortar beds, choose a bed to drill that does not dip below 150 mm from external ground level. If the stone is porous, they can also be drilled and injected as part of the damp proof course.

Drill the holes to the necessary depth, ensuring you reduce your drilling pressure once you reach 40 mm short of the full hole depth. Reducing pressure ensures a cleaner hole and prevents damage to the far side of the wall. Clean the holes to remove all traces of dust.

Insert an 804-DPC foil cartridge into the applicator gun, ensuring the pressure piston is fully extended. Cut into the end of the cartridge so that cream will be able to flow freely. Screw the nozzle cap back onto the gun.

Fully insert the nozzle into the first drilled hole, and then inject Newton 804-DPC Damp Proofing Cream while withdrawing the nozzle at a steady rate. Stop injecting just before removing the nozzle from the wall. Repeat for the remaining holes.

### POT LIFE & FURTHER USE

Newton 804-DPC is a single-component product with no chemical curing reaction, therefore the product is reusable if the foil cartridge is sealed after part-use. In these conditions, the product should be used within three months.

There is no practical pot life.

### DISPOSAL

The product and its container must be disposed of as hazardous waste.

Please refer to the [Material Safety Data Sheet \(MSDS\)](#) for further information.

# NEWTON 804-DPC

## Injection Damp Proofing Cream

### MAKING GOOD - EXTERNALLY

Repair or re-point the mortar bed that has been drilled.

### RENDERING WITH NEWTON 808-RA

Newton 808-RA is a high specification render additive that is used as an additive to a 3:1 sand/cement render, for the re-plastering of the internal walls after the installation of the injected damp proof course.

The resultant render will prevent the passage of moisture within the drying wall from reaching the decorative finishes. It will also protect the final finishes from damage due to the hygroscopic salts that remain in the wall after the wall has fully dried out.

Please see the Newton 808-RA [Data Sheet](#) for further information.

### FINISHING WITH NEWTONITE SYSTEM

Alternatively, the final finishes can be protected from hygroscopic salts and dampness within the drying wall with the installation of one of the [System 800](#) Damp Proofing membranes.

Meshed membranes, suitable for direct application of plaster, render or dot and dabbed plasterboard are fixed to the wall with special plugs. Plain membranes, with no mesh are also available for where a dry lining frame is to be used.

### STORAGE

Store in dry conditions at temperatures between +5°C and +25°C with containers fully sealed. Do not expose to freezing conditions.

If these conditions are maintained and the product packaging is unopened, then a shelf life of up to 18 months can be expected.

### LIMITATIONS

- Do not apply externally during or immediately prior to rain
- Do not apply at temperatures lower than +5°C or higher than +40°C

### HEALTH & SAFETY

Product should only be used as directed. We always recommend that the Material Safety Data Sheet (MSDS) is carefully read prior to application of the material. Our recommendations for protective equipment should be strictly adhered to for your personal protection. The MSDS is available upon request from Newton Waterproofing Systems or online via our website. Please see contact details below.

Newton Waterproofing Systems reserve the right to update product literature at any time. Please always refer to our [website](#) for the latest versions.

© Newton Waterproofing Systems  
(a trading name of John Newton & Co. Ltd.)

Newton House, 17-20 Sovereign Way, Tonbridge, Kent, TN9 1RH

T: +44 (0)1732 360 095 W: [www.newtonwaterproofing.co.uk](http://www.newtonwaterproofing.co.uk) E: [tech@newtonwaterproofing.co.uk](mailto:tech@newtonwaterproofing.co.uk)