

ECG-System

Edge Clamped Glass

Glazing System

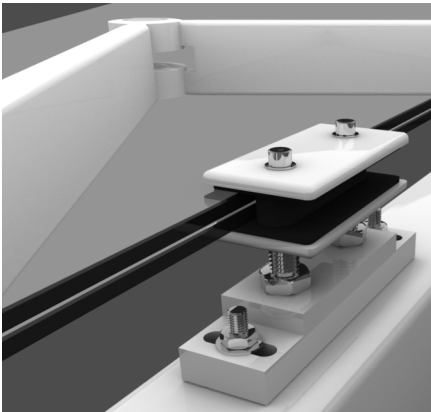
NOVUM



ECG-System

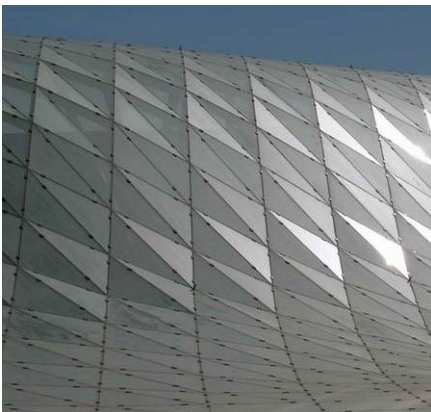
Edge Clamped Glass

Glazing System



System Components

01. Top cover plate is formed to accept a variety of angles and can be aluminum or Grade 316 stainless steel
02. Fasteners and studs are Grade 316 stainless steel
03. Aluminum cast base and lower clamp
04. Glass/panel spacers are stiff silicone
05. Panels can be glass or opaque stiff panel/plate products
06. 100% silicone joints comprised of wet silicone and extruded silicone gaskets

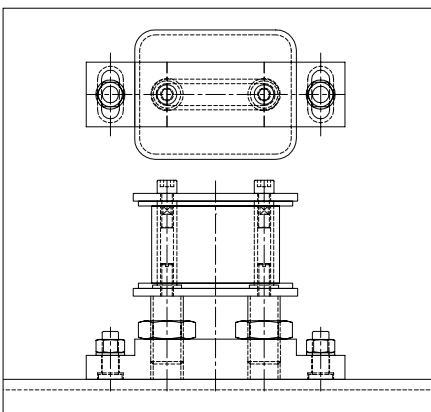


Applications

01. Vertical, overhead and sloped glazing
02. Used where flat panels are to be supported primarily along their edges

System Attributes

01. Contemporary design aesthetic where the glass appears to "float"
02. Extremely well suited to angular changes in surface planes
03. Minimal glass joint widths
04. Panel can be 2, 3 or 4 sided support
05. Nominal interruption of glass surface for maximum transparency
06. 90% plus flush glazed aesthetic
07. Free air flow around the interior glass surface reduces condensation
08. Clamped fitting is easily adjustable and ideal for fast installation
09. Standard clamp finishes are stocked for fast track scheduling
10. Glass panels are designed using finite element analysis for maximum safety
11. Large panel sizes and loads can be accommodated by increasing the number of panel clamps
12. Integrates fully with all Novum Structural Systems



Options/Materials/Finishes

01. Glass can be monolithic, laminated or insulated
02. Glass or panels can be 3/8" to 1-3/4" thick
03. Many glass coatings and frit patterns are available
04. Standard finish is silver metallic, fluoro carbon coated aluminum
05. Cap plate options include stainless steel #4, #8 or bead blasted
06. Other color choices are available as an option

Front: Rail Central, UT
Architect: EMA Architects, LLC